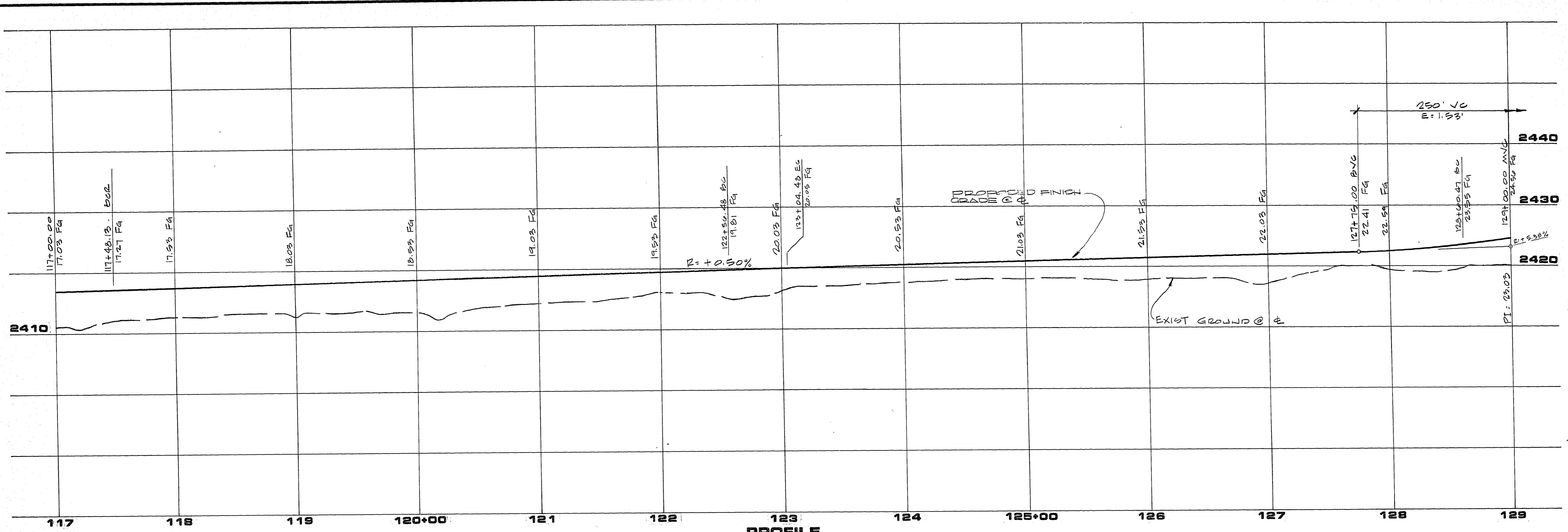
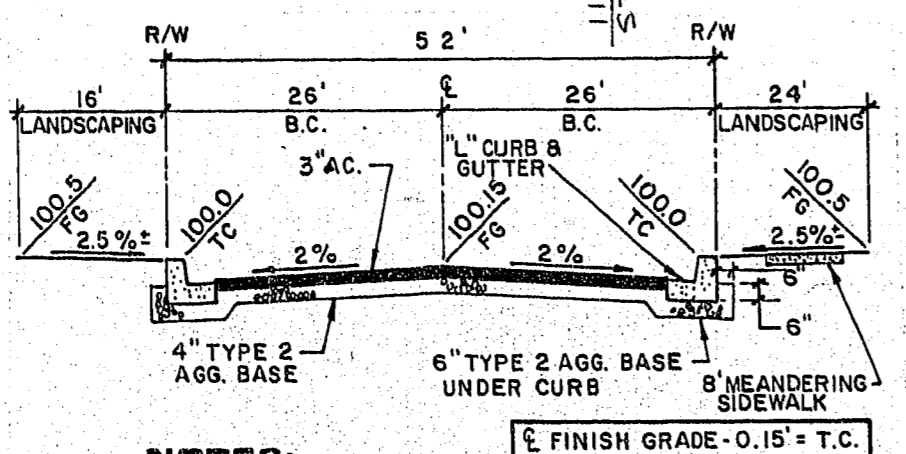
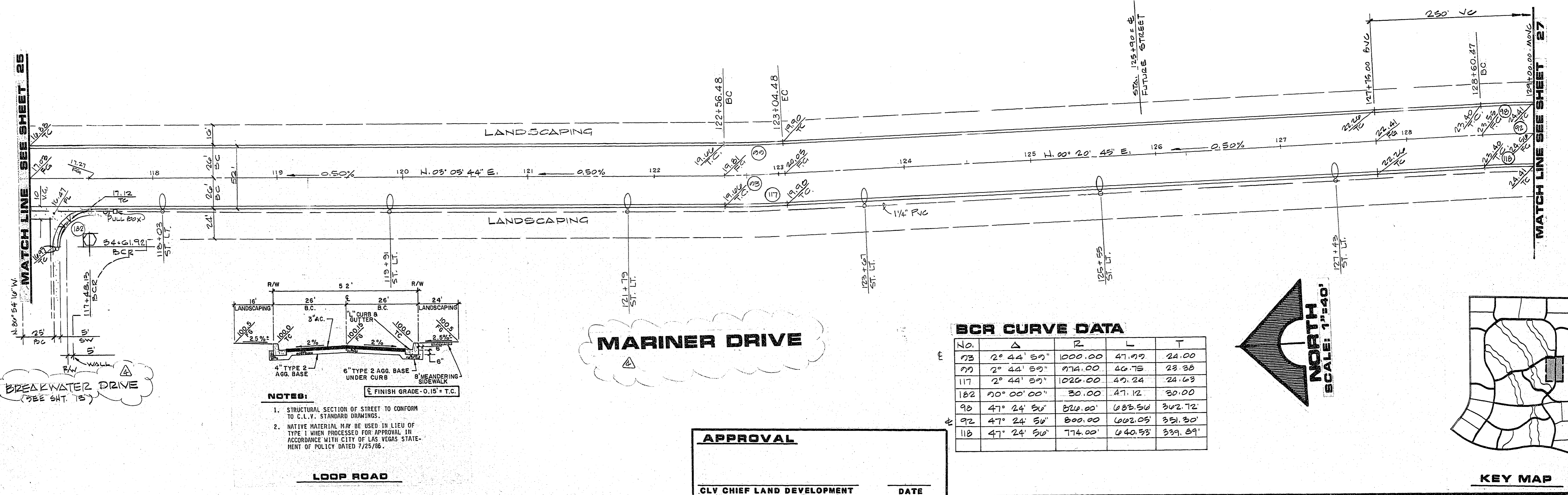


JOB NO. 660005 0-14-87



**PROFILE**  
SCALE: HORIZ. 1"=40'  
VERT. 1"=8'

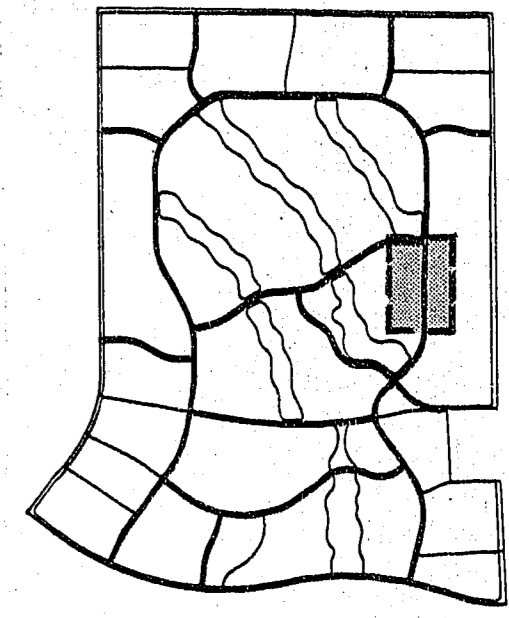
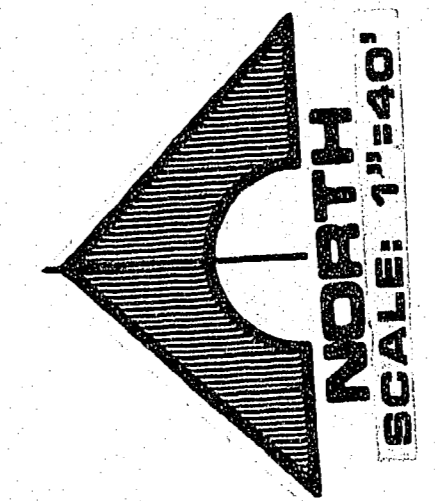


- NOTES:**
- STRUCTURAL SECTION OF STREET TO CONFORM TO C.L.V. STANDARD DRAWINGS.
  - NATIVE MATERIAL MAY BE USED IN LIEU OF TYPE 1 WHEN PROCESSED FOR APPROVAL IN ACCORDANCE WITH CITY OF LAS VEGAS STATEMENT OF POLICY DATED 7/25/86.

**BCR CURVE DATA**

No.	Δ	R	L	T
73	2° 44' 59"	1000.00	47.97	24.00
77	2° 44' 59"	974.00	46.78	23.38
117	2° 44' 59"	1020.00	49.24	24.63
182	20° 00' 00"	30.00	47.12	30.00
98	47° 24' 58"	820.00	683.50	342.72
92	47° 24' 58"	800.00	602.05	351.30
118	47° 24' 58"	774.00	640.53	339.89

**APPROVAL**  
CLV CHIEF LAND DEVELOPMENT \_\_\_\_\_ DATE \_\_\_\_\_



DESCRIPTION  
 1. GENERAL DESCRIPTION  
 2. SEE NOTES TO SHEET  
 3. PREPARED BY  
 4. CHECKED BY  
 5. DATE  
 6. PROJECT TITLE  
 7. SHEET NO.

G.C. WALLACE, INC.  
 Engineering/Architecture  
 1555 SOUTH RAINBOW BLVD., LAS VEGAS, NEVADA 89102  
 No. 3943

RA HOMES  
 DESERT SHORES - PHASE 1  
**MARINER DRIVE**  
 STA. 117+00.00 TO STA. 129+00.00  
 SHEET **26**  
 OF 43 SHEETS