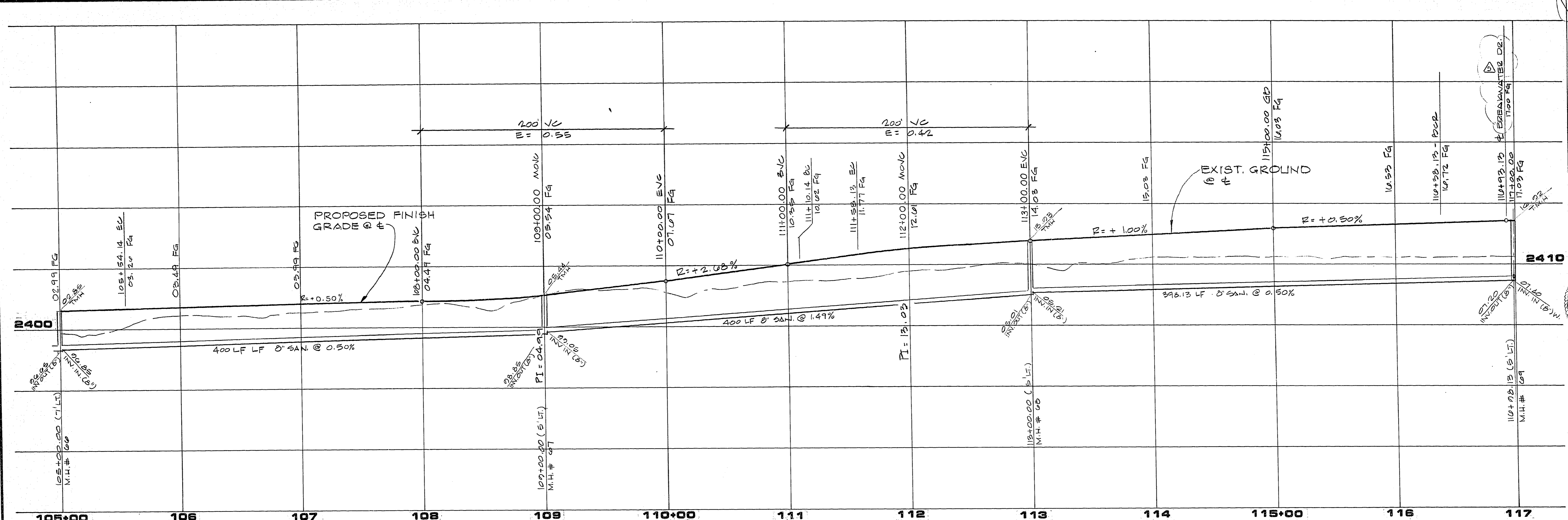
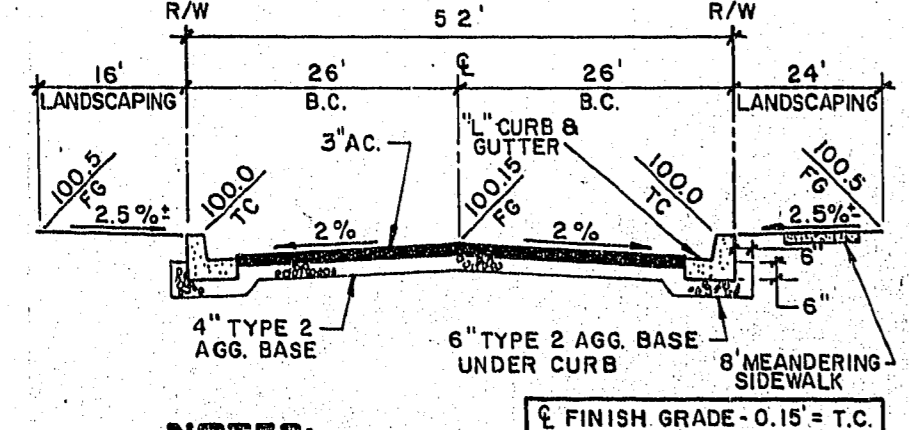
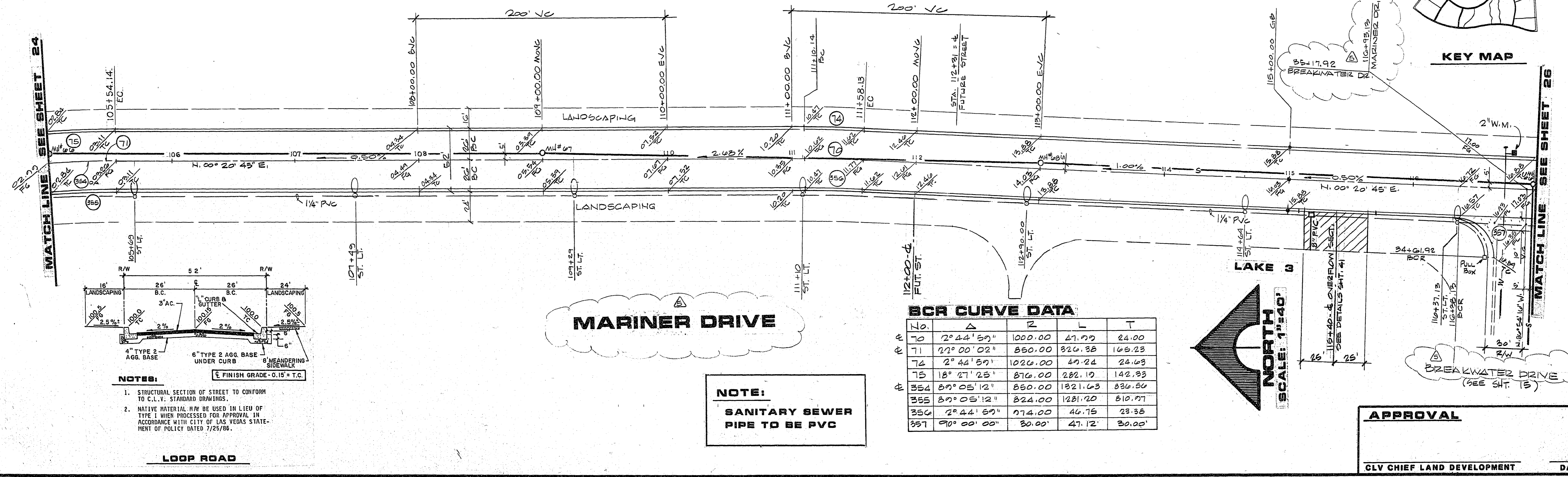


JOB NO. 660.009 7-14-87



PROFILE
 HORIZ. 1"=40'
 VERT. 1"=8'



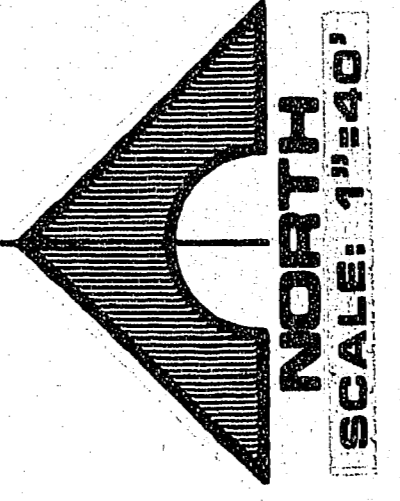
- NOTES:**
- STRUCTURAL SECTION OF STREET TO CONFORM TO C.L.V. STANDARD DRAWINGS.
 - NATIVE MATERIAL MAY BE USED IN LIEU OF TYPE I WHEN PROCESSED FOR APPROVAL IN ACCORDANCE WITH CITY OF LAS VEGAS STATEMENT OF POLICY DATED 7/25/86.

MARINER DRIVE

NOTE:
 SANITARY SEWER PIPE TO BE PVC

BCR CURVE DATA

STATION	Δ	R	L	T
70	2° 44' 59"	1000.00	47.77	24.00
71	2° 00' 02"	850.00	326.38	168.23
72	2° 44' 59"	1020.00	49.24	24.69
75	18° 27' 25"	876.00	282.19	142.93
85A	89° 05' 12"	850.00	1321.63	836.56
85B	89° 05' 12"	824.00	1281.20	810.77
85C	2° 44' 59"	774.00	46.75	23.86
857	90° 00' 00"	30.00	47.12	30.00



APPROVAL

CLV CHIEF LAND DEVELOPMENT DATE

REVISIONS

REV	DATE	DESCRIPTION
1	7-14-87	GENERAL REVISIONS
2	7-14-87	REVISIONS TO STA. 105+00 TO 107+00
3	7-14-87	REVISIONS TO STA. 107+00 TO 117+00
4	7-14-87	ADDED VALLEY GUTTER AND OVERFLOW SECTION

RECOMMENDED
 G.C. WALLACE, INC.
 Engineering/Architecture

RA HOMES
 DESERT SHORES - PHASE 1
 MARINER DRIVE
 STA. 105+00.00 TO STA. 117+00.00

SHEET
25
 OF 43 SHEETS
 107Y-1248-1