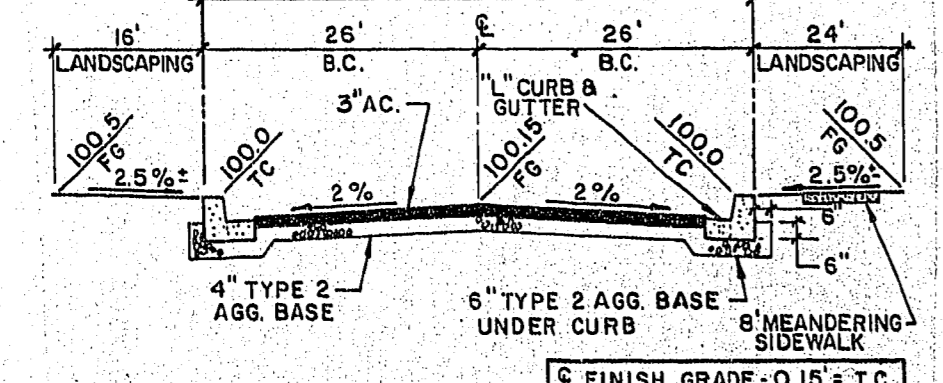
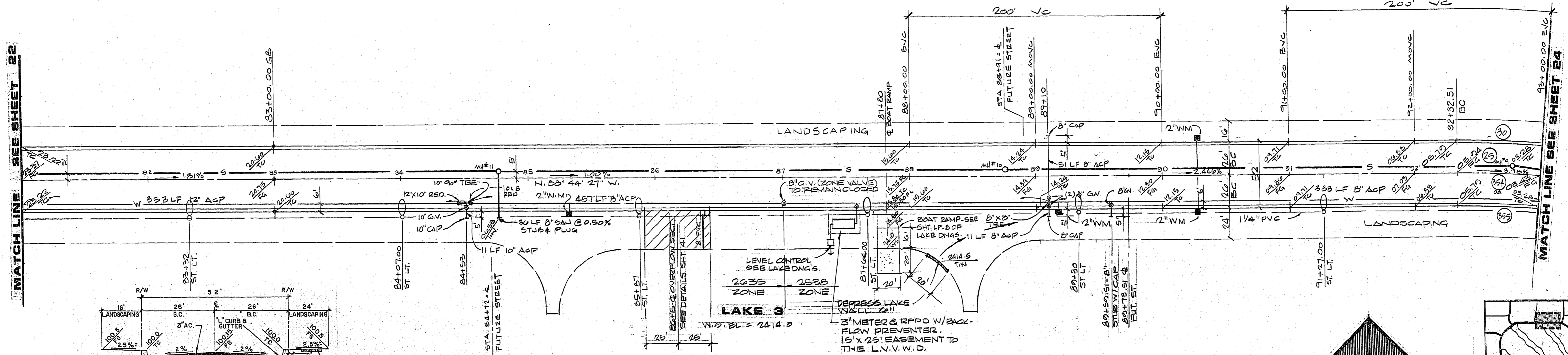


PROFILE
SCALE: HORIZ. 1"=40'
VERT. 1"=8'

REV	DATE	DESCRIPTION
1	11/21/88	GENERAL REVISIONS
2	12/08/88	ADDED DEPRESSIONED LAKE WALL
3	01/05/89	ADDED 8" WATER VALVE
4	01/05/89	STUDY STA. 89+50.51
5	01/05/89	STUDY STA. 89+32
6	04/28/89	100% ST. SEC. MOVE. 2 DATE

RECOMMENDED
 G.C. WALLACE, INC.
 ENGINEERING ARCHITECTURE
 1555 SOUTH RAINBOW BLVD. LAS VEGAS, NEVADA 89102
 11/21/88
 12/08/88
 01/05/89
 01/05/89
 01/05/89
 04/28/89

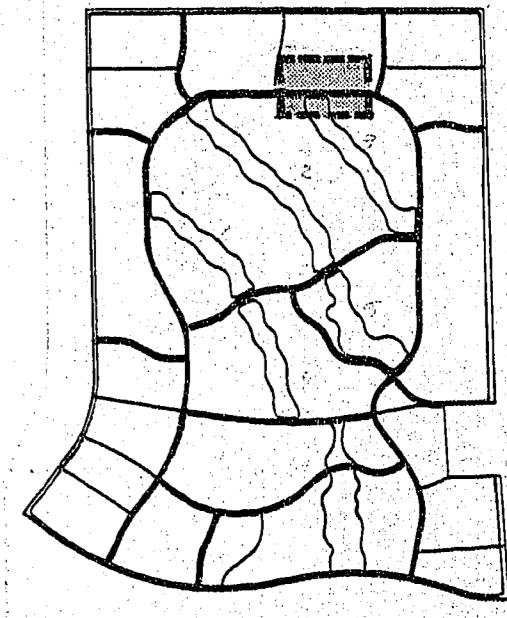
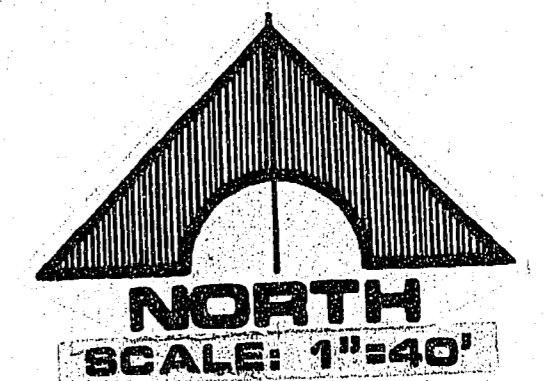


- NOTES:**
- STRUCTURAL SECTION OF STREET TO CONFORM TO C.I.V. STANDARD DRAWINGS.
 - NATIVE MATERIAL MAY BE USED IN LIEU OF TYPE 1 WHEN PROCESSED FOR APPROVAL IN ACCORDANCE WITH CITY OF LAS VEGAS STATEMENT OF POLICY DATED 7/25/86.

BCR CURVE DATA

STATION	Δ	R	L	T
29	17° 41' 34"	850.00'	262.48'	132.29'
30	14° 08' 57"	870.00'	210.33'	108.72'
354	89° 05' 12"	850.00'	1,321.63'	830.56'
355	89° 05' 12"	824.00'	1,281.20'	810.97'

NOTE:
 SANITARY SEWER PIPE TO BE PVC



APPROVAL
 CLV CHIEF LAND DEVELOPMENT
 DATE

RA HOMES
 DESERT SHORES - PHASE 1
 CORAL SHORES DRIVE
 STA. 81+00.00 TO STA. 93+00.00

SHEET
23
 OF 43 SHEETS

JOB NO. 660.009 0-14-87