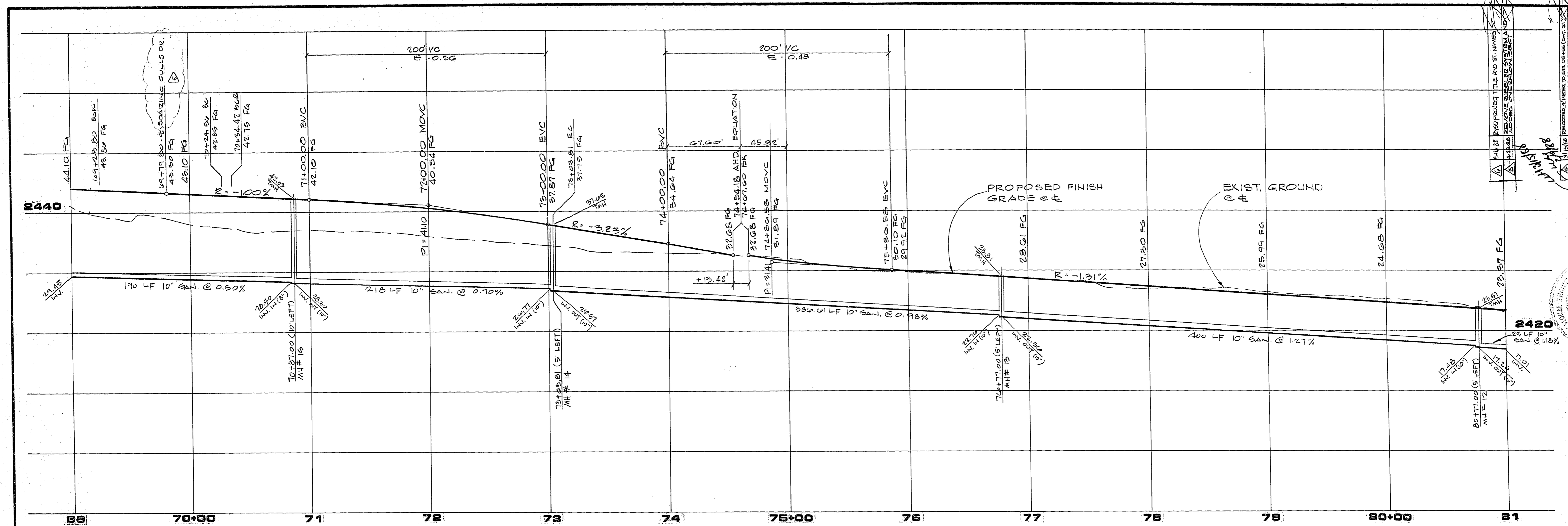
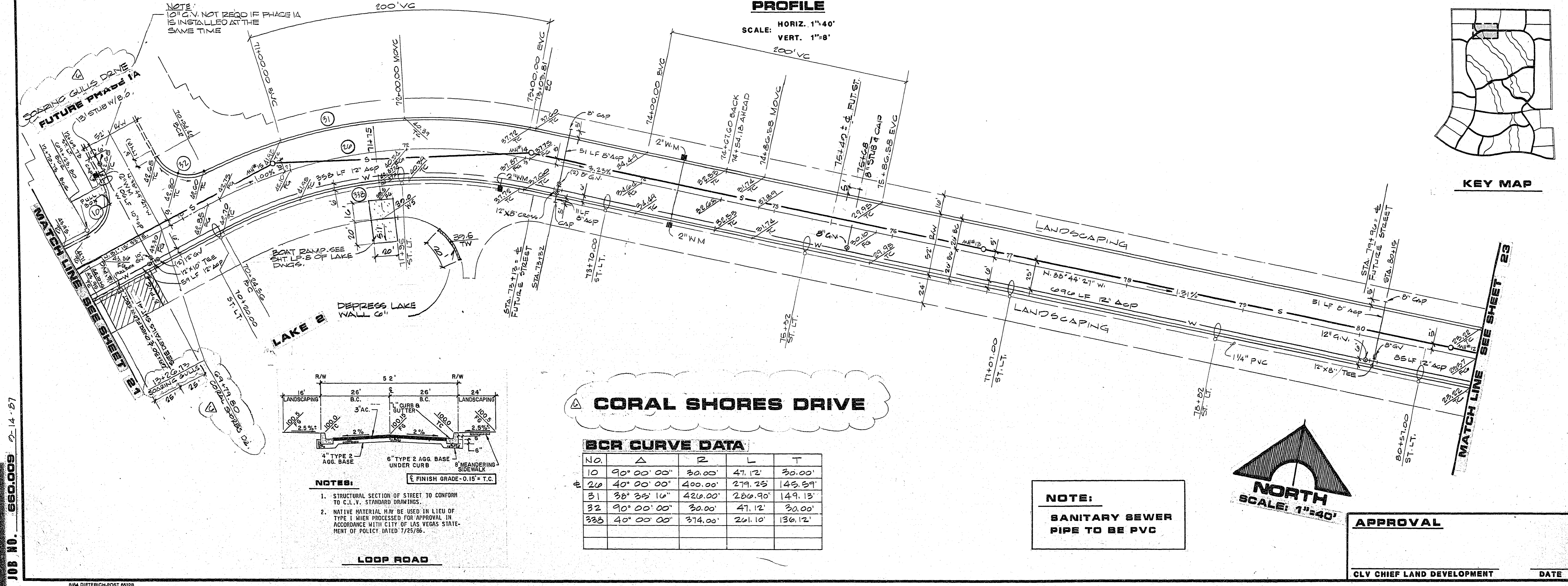


JOB NO. 660.009 0-14-87



PROFILE

SCALE: HORIZ. 1"=40'
VERT. 1"=8'

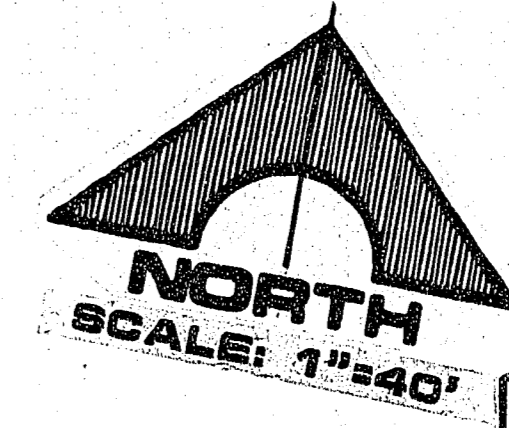


CORAL SHORES DRIVE

BCR CURVE DATA

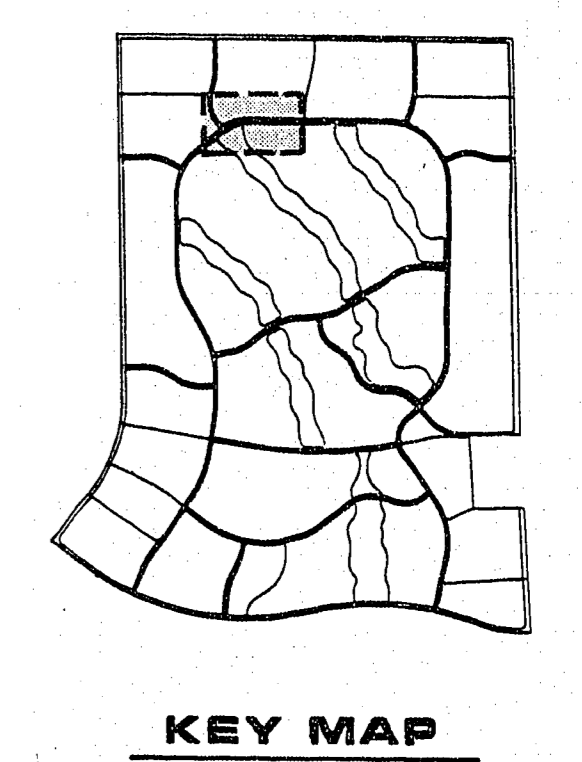
NO.	Δ	R	L	T
10	90° 00' 00"	30.00'	47.12'	30.00'
20	40° 00' 00"	400.00'	279.25'	145.59'
31	38° 33' 16"	420.00'	280.90'	149.13'
32	90° 00' 00"	30.00'	47.12'	30.00'
33	40° 00' 00"	374.00'	261.10'	136.12'

NOTE:
SANITARY SEWER PIPE TO BE PVC



APPROVAL

CLV CHIEF LAND DEVELOPMENT DATE



RECOMMENDED BY: *J. Wallace*

DATE: 11/2/86

REVISIONS:

NO.	DATE	DESCRIPTION
1	11/2/86	GENERAL REVISIONS
2	11/2/86	RELOCATED 4" METER PUMP SHUT 14
3	11/2/86	TO NORTH END LAKE 2
4	11/2/86	ADDED 8" WATER VALVE & STUB
5	11/2/86	AT STA. 75+12.8
6	11/2/86	ST. SPEC. NOTES & DATE 8/80
7	11/2/86	ST. SPEC. NOTES & DATE 8/80

DESIGNED BY: *J. Wallace*

PROJECT TITLE AND ST. NUMBER: 1555 SOUTH RAINBOW BLVD., LAS VEGAS, NEVADA 89102

C.C. WALLACE, INC.
Engineering/Architecture

RA HOMES
DESERT SHORES - PHASE 1
CORAL SHORES DRIVE
STA. 69+00.00 TO STA. 81+00.00

SHEET **22**
OF 45 SHEETS