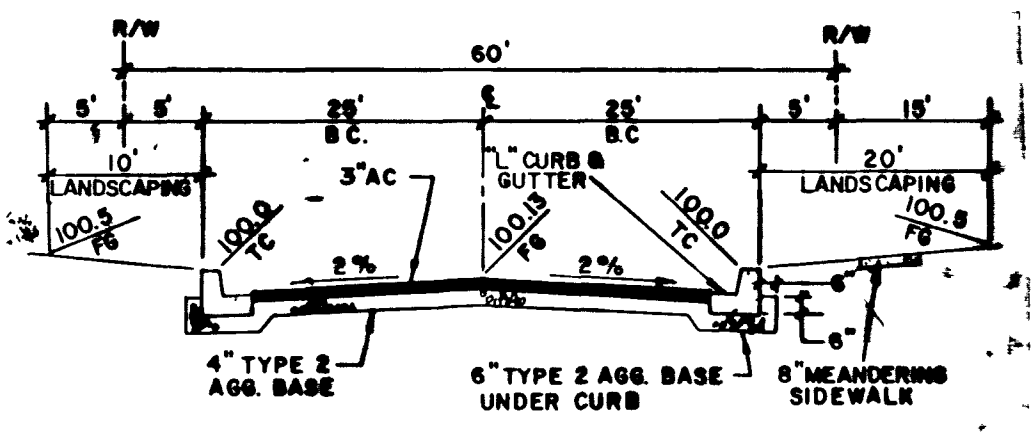
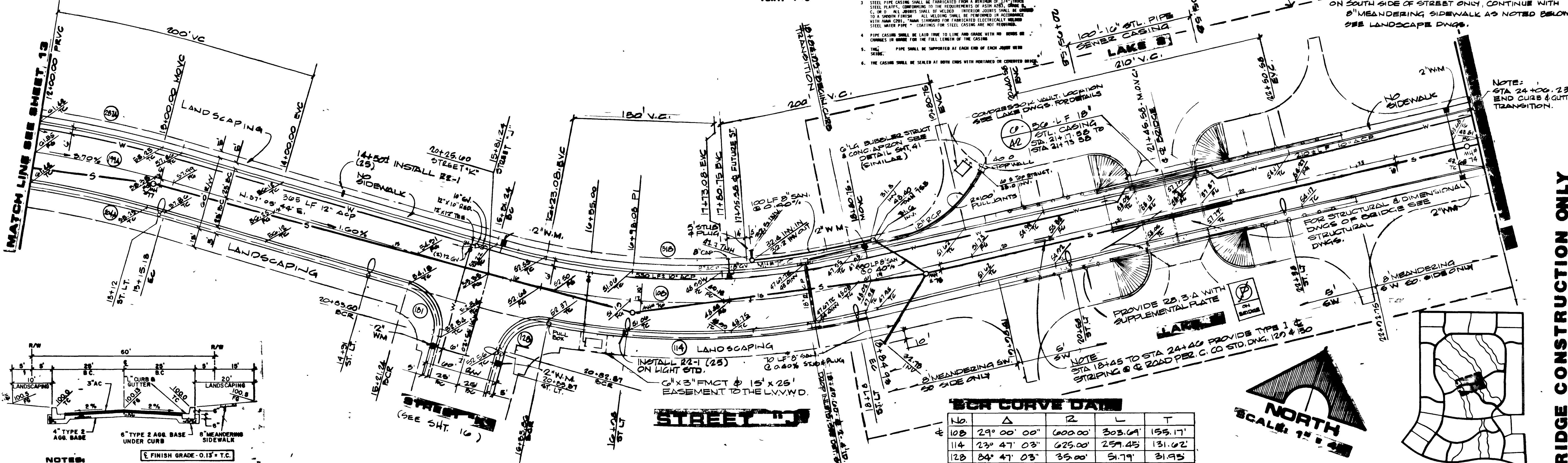


**PROFILE**  
SCALE: HORIZ. 1"=40'  
VERT. 1"=8'

- SEWER CASING NOTES:**
- SEE PLAN AND SCHEDULE FOR ELEVATIONS AND CASING LOCATION AND LENGTH.
  - GRADE OF SEWER SHALL BE IN ACCORDANCE WITH PIPE MANUFACTURER'S RECOMMENDATION.
  - STEEL PIPE CASING SHALL BE FABRICATED FROM A MINIMUM OF 1/4" THICK STEEL PLATE, CONFORMING TO THE REQUIREMENTS OF ASTM A36. SHALL BE TO A MINIMUM FINISH. ALL WELDING SHALL BE PERFORMED IN ACCORDANCE WITH AWS D1.1. SHALL BE FABRICATED ELECTRICALLY WELDED STEEL WATER PIPE. COATINGS FOR STEEL CASING ARE NOT REQUIRED.
  - PIPE CASING SHALL BE LAPPED TO LINE AND GRADE WITH NO MORE THAN 1/4" GAPS IN JOINTS FOR THE FULL LENGTH OF THE CASING.
  - PIPE SHALL BE SUPPORTED AT EACH END OF EACH JOINT WITH BRICKS.
  - THE CASING SHALL BE SEALED AT BOTH ENDS WITH PORTLAND CEMENT MORTAR.

NOTE: FOR DETAILED GRADING THIS AREA, SEE SHT. D-6

NOTE: AT BRIDGE: 5' SIDEWALK ON BOTH SIDES OF STREET FROM STA. 24108.41 TO STA. 24102.76. ON SOUTH SIDE OF STREET ONLY, CONTINUE WITH 8" MEANDERING SIDEWALK AS NOTED BELOW. SEE LANDSCAPE DWG.



- NOTES:**
- STRUCTURAL SECTION OF STREET TO CONFORM TO C.L.V. STANDARD DRAWINGS.
  - NATIVE MATERIAL MAY BE USED IN LIEU OF TYPE I WHEN PROCESSED FOR APPROVAL IN ACCORDANCE WITH CITY OF LAS VEGAS STATEMENT OF POLICY DATED 7/25/00.

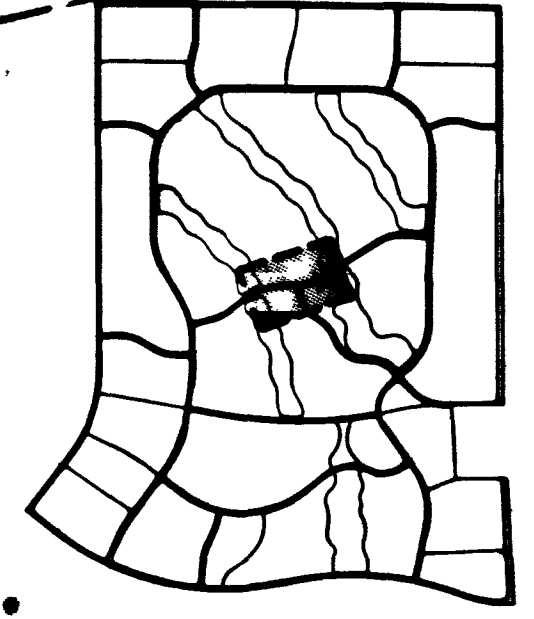
STREET "J"

EXCEPT FROM STA. 18+84.03 TO STA. 24+06.23

**APPROVAL**  
CITY ENGINEER  
DATE

**SCOUR CURVE DATA**

STATION	Δ	L	T
10B	29° 00' 00"	600.00'	303.64'
11A	23° 47' 03"	625.00'	259.45'
12B	84° 47' 03"	35.00'	51.79'
181	90° 00' 00"	35.00'	54.96'
197A	35° 00' 00"	900.00'	549.75'
204A	35° 00' 00"	875.00'	534.51'
287A	35° 00' 00"	925.00'	545.05'
31B	29° 00' 00"	575.00'	291.03'



**NOTE:**  
SANITARY SEWER PIPE TO BE PVC

**FOR BRIDGE CONSTRUCTION ONLY**

REVISIONS

NO.	DATE	DESCRIPTION
1	01/14/17	GENERAL DESIGN
2	01/14/17	GENERAL DESIGN
3	01/14/17	GENERAL DESIGN
4	01/14/17	GENERAL DESIGN
5	01/14/17	GENERAL DESIGN
6	01/14/17	GENERAL DESIGN
7	01/14/17	GENERAL DESIGN
8	01/14/17	GENERAL DESIGN
9	01/14/17	GENERAL DESIGN
10	01/14/17	GENERAL DESIGN
11	01/14/17	GENERAL DESIGN
12	01/14/17	GENERAL DESIGN
13	01/14/17	GENERAL DESIGN
14	01/14/17	GENERAL DESIGN
15	01/14/17	GENERAL DESIGN
16	01/14/17	GENERAL DESIGN
17	01/14/17	GENERAL DESIGN
18	01/14/17	GENERAL DESIGN
19	01/14/17	GENERAL DESIGN
20	01/14/17	GENERAL DESIGN
21	01/14/17	GENERAL DESIGN
22	01/14/17	GENERAL DESIGN
23	01/14/17	GENERAL DESIGN
24	01/14/17	GENERAL DESIGN
25	01/14/17	GENERAL DESIGN
26	01/14/17	GENERAL DESIGN
27	01/14/17	GENERAL DESIGN
28	01/14/17	GENERAL DESIGN
29	01/14/17	GENERAL DESIGN
30	01/14/17	GENERAL DESIGN
31	01/14/17	GENERAL DESIGN
32	01/14/17	GENERAL DESIGN
33	01/14/17	GENERAL DESIGN
34	01/14/17	GENERAL DESIGN
35	01/14/17	GENERAL DESIGN
36	01/14/17	GENERAL DESIGN
37	01/14/17	GENERAL DESIGN
38	01/14/17	GENERAL DESIGN
39	01/14/17	GENERAL DESIGN
40	01/14/17	GENERAL DESIGN
41	01/14/17	GENERAL DESIGN
42	01/14/17	GENERAL DESIGN
43	01/14/17	GENERAL DESIGN
44	01/14/17	GENERAL DESIGN
45	01/14/17	GENERAL DESIGN
46	01/14/17	GENERAL DESIGN
47	01/14/17	GENERAL DESIGN
48	01/14/17	GENERAL DESIGN
49	01/14/17	GENERAL DESIGN
50	01/14/17	GENERAL DESIGN
51	01/14/17	GENERAL DESIGN
52	01/14/17	GENERAL DESIGN
53	01/14/17	GENERAL DESIGN
54	01/14/17	GENERAL DESIGN
55	01/14/17	GENERAL DESIGN
56	01/14/17	GENERAL DESIGN
57	01/14/17	GENERAL DESIGN
58	01/14/17	GENERAL DESIGN
59	01/14/17	GENERAL DESIGN
60	01/14/17	GENERAL DESIGN
61	01/14/17	GENERAL DESIGN
62	01/14/17	GENERAL DESIGN
63	01/14/17	GENERAL DESIGN
64	01/14/17	GENERAL DESIGN
65	01/14/17	GENERAL DESIGN
66	01/14/17	GENERAL DESIGN
67	01/14/17	GENERAL DESIGN
68	01/14/17	GENERAL DESIGN
69	01/14/17	GENERAL DESIGN
70	01/14/17	GENERAL DESIGN
71	01/14/17	GENERAL DESIGN
72	01/14/17	GENERAL DESIGN
73	01/14/17	GENERAL DESIGN
74	01/14/17	GENERAL DESIGN
75	01/14/17	GENERAL DESIGN
76	01/14/17	GENERAL DESIGN
77	01/14/17	GENERAL DESIGN
78	01/14/17	GENERAL DESIGN
79	01/14/17	GENERAL DESIGN
80	01/14/17	GENERAL DESIGN
81	01/14/17	GENERAL DESIGN
82	01/14/17	GENERAL DESIGN
83	01/14/17	GENERAL DESIGN
84	01/14/17	GENERAL DESIGN
85	01/14/17	GENERAL DESIGN
86	01/14/17	GENERAL DESIGN
87	01/14/17	GENERAL DESIGN
88	01/14/17	GENERAL DESIGN
89	01/14/17	GENERAL DESIGN
90	01/14/17	GENERAL DESIGN
91	01/14/17	GENERAL DESIGN
92	01/14/17	GENERAL DESIGN
93	01/14/17	GENERAL DESIGN
94	01/14/17	GENERAL DESIGN
95	01/14/17	GENERAL DESIGN
96	01/14/17	GENERAL DESIGN
97	01/14/17	GENERAL DESIGN
98	01/14/17	GENERAL DESIGN
99	01/14/17	GENERAL DESIGN
100	01/14/17	GENERAL DESIGN

1555 SOUTH RAINBOW BLVD / LAS VEGAS, NEVADA 89102

**G.C. WALLACE, INC.**  
Engineering/Architecture

WEST LAKE - PHASE I  
STREET "J"  
STA. 12+00.00 TO STA. 24+00.00

SHEET  
**B-5**  
OF 5 SHEETS

