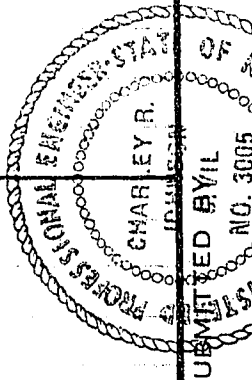


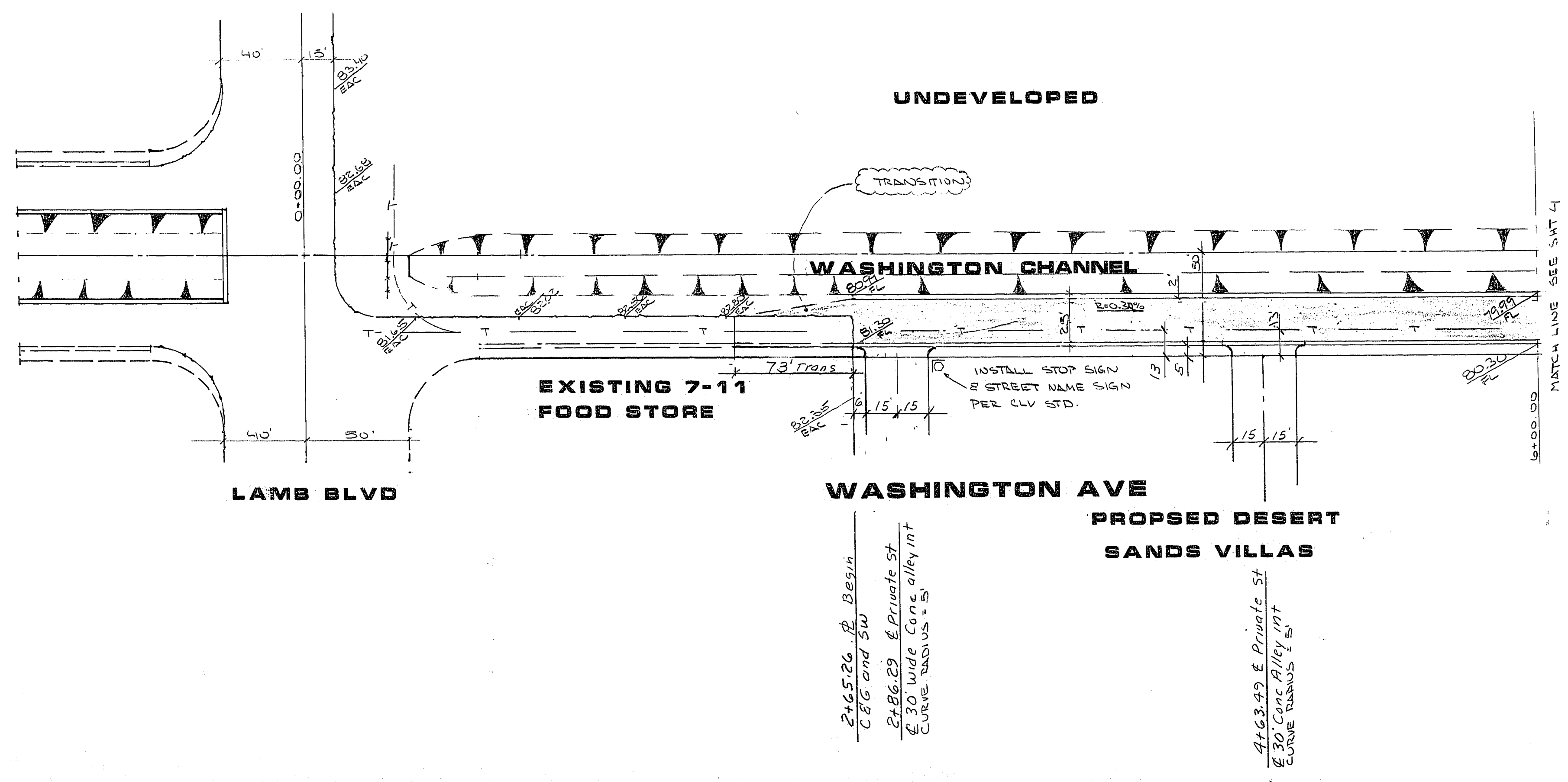
REV	DATE	BY	REVISION

SUBMITTED BY: CHARLEY R. JOHNSON PE  
 DATE: 6/22/81  
 NEV CERT 3005



**PLANNERS**  
 CONSULTING ENGINEERS  
 2800 WEST SAHARA AVENUE  
 LAS VEGAS, NEVADA 89102  
 PHONE (702) 873-7550

**VTM** nevada



**APPROVAL**

William Dennis  
 CLV CITY ENGINEER  
 DATE: 1/21/81

Randall Dennis  
 CLV QUALITY CONTROL ENGINEER  
 DATE: 7-31-81

[Signature]  
 CLV TRAFFIC ENGINEER  
 DATE: 7-31-81

N/A  
 CLV FIRE DEPT.  
 DATE:

Eugene Roman  
 CLV ELECTRICAL COORDINATOR  
 DATE: 7/21/81

**TITLE**  
STREET PLAN & PROFILE

**PROJECT**  
DESERT SANDS VILLAS

WO NO. 2891  
 BY D.M. - CRJ  
 DATE 6-22-81  
 SCALE HORIZ = 1"=40'  
 VERT = 1"=4'

**SHEET**  
 3  
 OF 9 SHEETS

1074-1245 (T.H.)