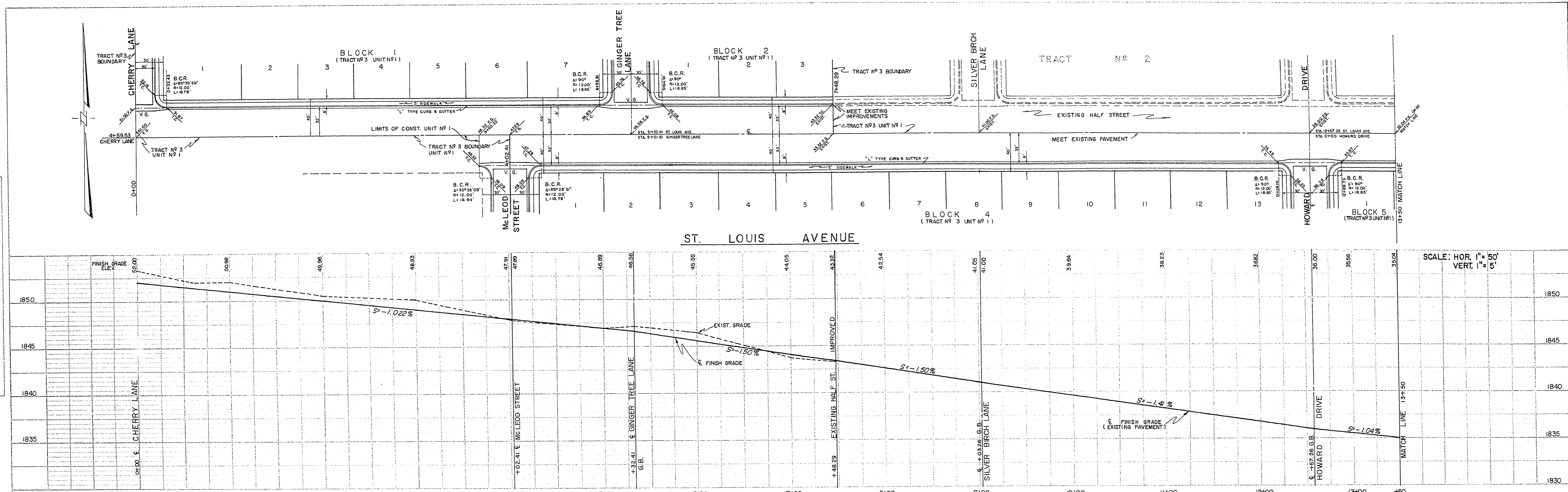
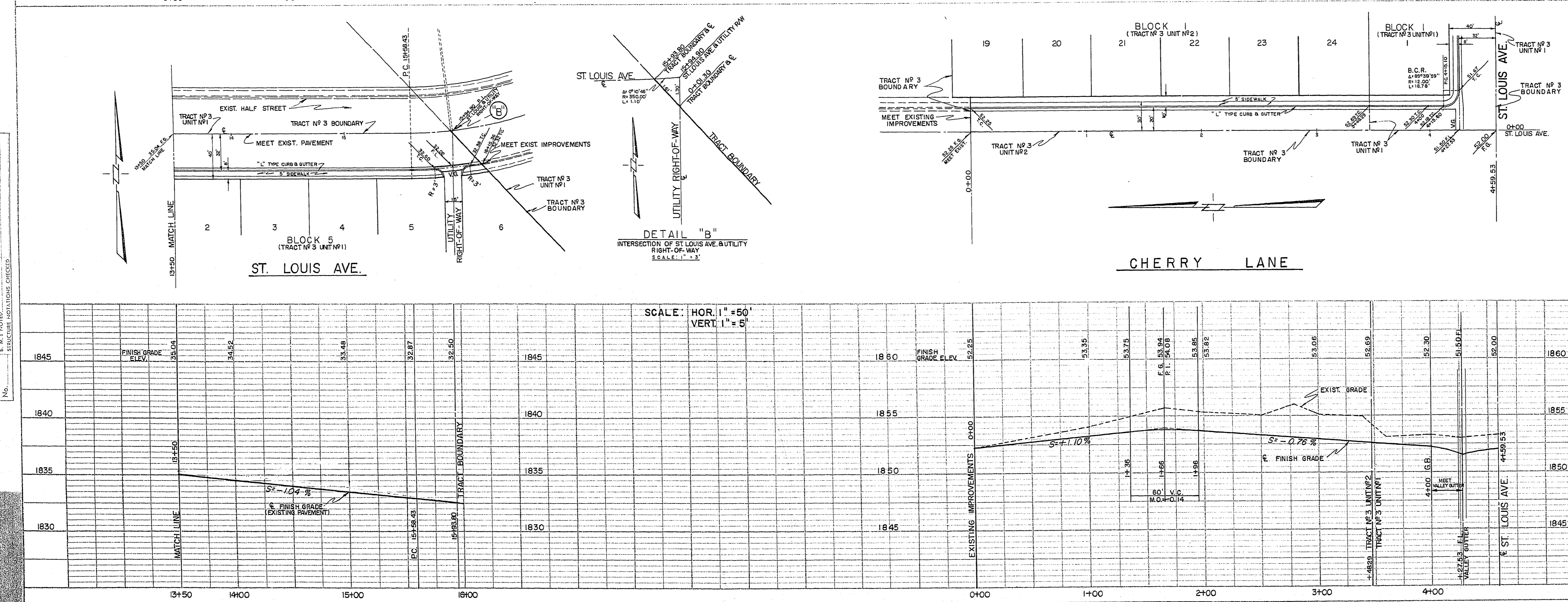


PLAN
 SURVEYED BY: []
 NOTE BOOK: []
 ST. OF WAY CHECKED: []



SCALE: HOR. 1" = 50'
 VERT. 1" = 5'

PROFILE
 SURVEYED BY: []
 NOTE BOOK: []
 ST. OF WAY CHECKED: []



SCALE: HOR. 1" = 50'
 VERT. 1" = 5'

APPROVED AS TO DESIGN ONLY
 Contractor will be responsible for all details, dimensions and conformity to the design drawings.
 Date: 4/24/58
 By: [Signature]

City of Las Vegas, Nevada
 Office of the City Engineer
 Approved by: [Signature]
 Date: 4/25/58

- GENERAL NOTES**
1. ALL WORK MUST CONFORM TO CITY OF LAS VEGAS STANDARD DRAWINGS & SPECIFICATIONS.
 2. DATUM ELEVATION = 1800 C.L.V.
 3. B.M. - USED T.B.M. (C.L.V. DATUM) TOP OF EXISTING CURB 32' LEFT OF CENTER LINE OF ST. LOUIS AVENUE AT STATION 7+48.29 - ELEVATION 1843.32
 4. STREET WIDTHS SHOWN ARE TO PRIOR LINE AND FACE OF CURB.
 5. V.G. = VALLEY GUTTER.
 6. G.B. = GRADE BREAK.
 7. F.L. = FLOW LINE.
 8. F.G. = FINISH GRADE.
 9. T.C. = TOP OF CURB.
 10. STREET CROWN 0.50' UNLESS SHOWN OTHERWISE.

Approval of this plan by the City of Las Vegas, Nevada, does not relieve the Subdivider of responsibility for errors in calculation, design, or planning by the Subdivider's Engineer or Surveyor.

**CITY OF LAS VEGAS
 ENGINEERING DEPT.**

**STREET PLANS & PROFILES
 DAWSON PARK TRACT NO. 3
 LAS VEGAS, NEVADA**

PREPARED BY
TYSON ENGINEERING CO.
 CONSULTING ENGINEERS
 LAS VEGAS, NEVADA
 14, AUG 1957