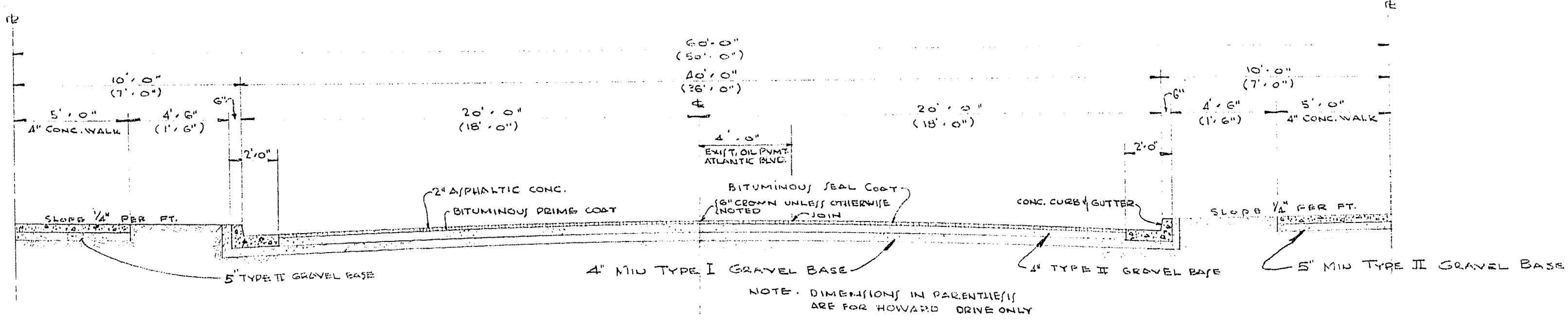
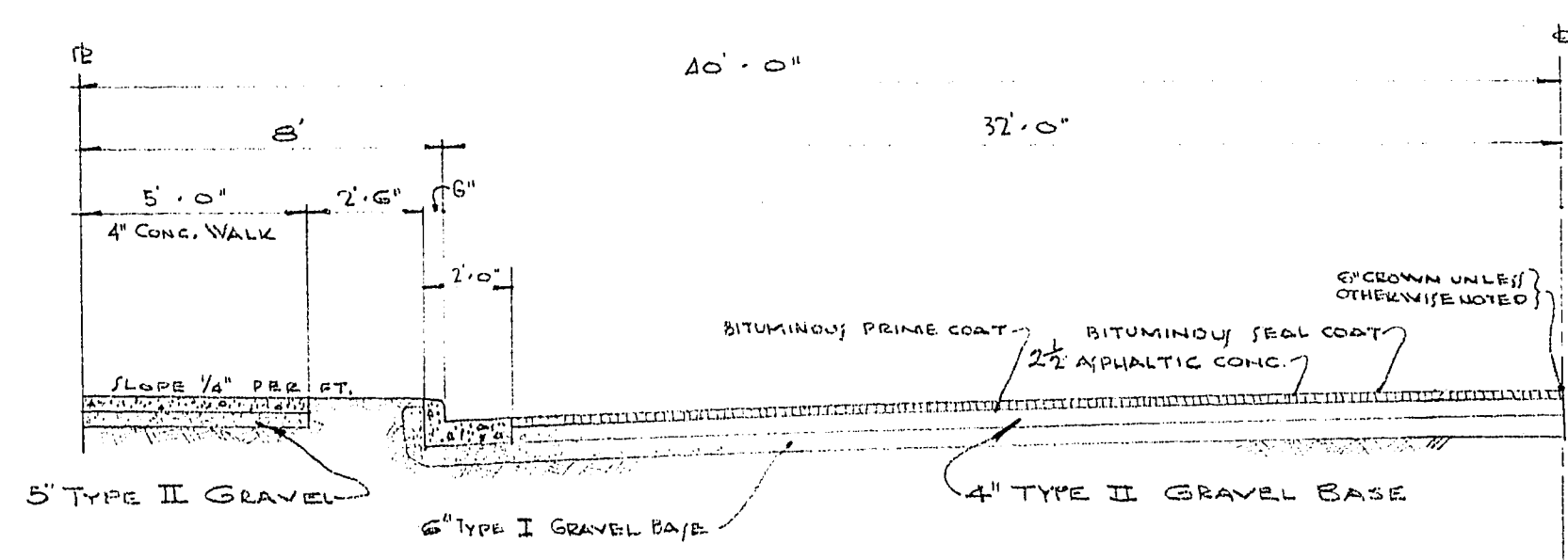


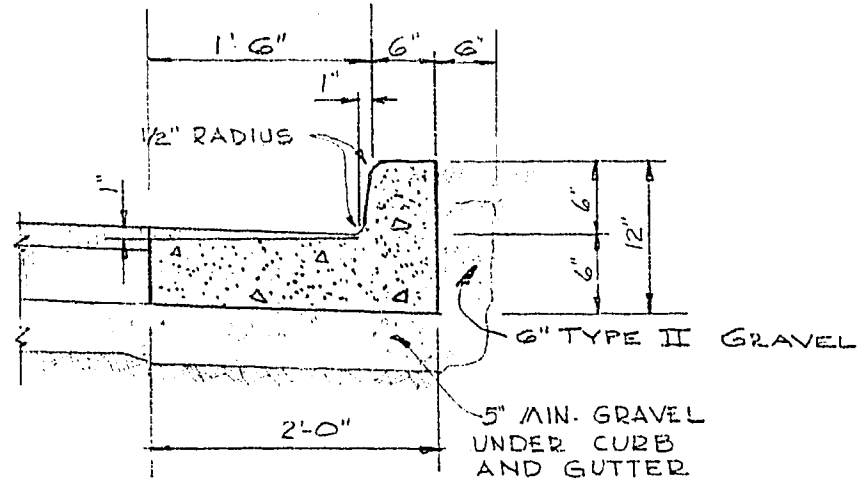
ESTIMATED QUANTITIES	
ITEM	QUANTITY
EXCAVATION	23,181 CY
FILL	17,854 CY
2" ASPHALTIC CONCRETE	131,131 SF
BITUMINOUS PRIME COAT	2,914 GAL
BITUMINOUS SEAL COAT	1,459 GAL
GRAVEL BASE (INCL. SW. & CURB)	4,222 CY
CURB & GUTTER	8,804 LF
SIDE WALK	44,182 SF
VALLEY GUTTER	3,168 SF
DRIVE APPROACH	6,017 SF
WATER	
6" MAIN	3,514 LF
FIRE HYDRANT	13
6" GATE VALVE	9
8" MAIN	1,175 LF



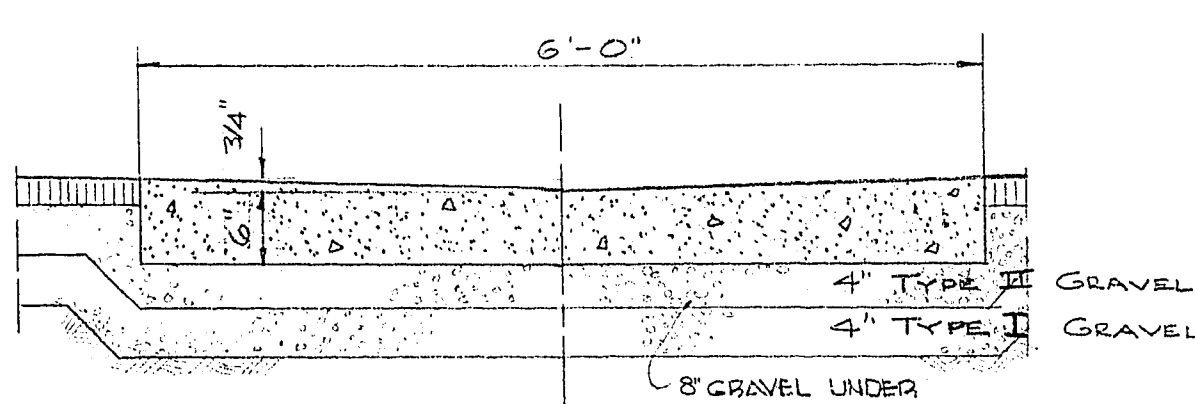
TYPICAL STREET SECTION
SCALE: 1/4" = 1'-0"



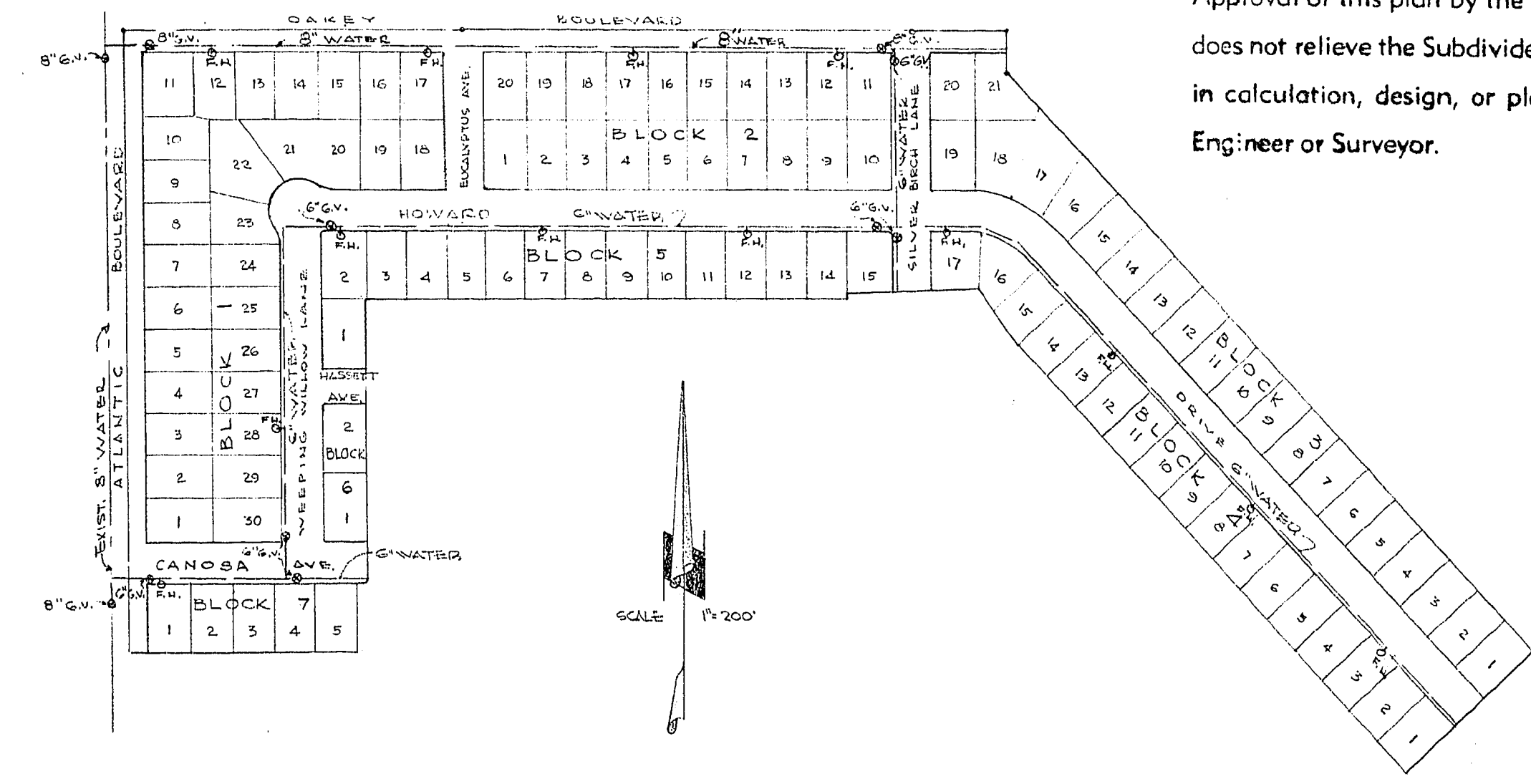
TYP. PART SECT. ST. LOUIS BOULEVARD
NOT TO SCALE NOT USED IN UNIT #1



TYP. CONCRETE CURB & GUTTER
SCALE: 3/4" = 1'-0" (ALL STREETS)



CONC. VALLEY GUTTER
SCALE: 3/4" = 1'-0"



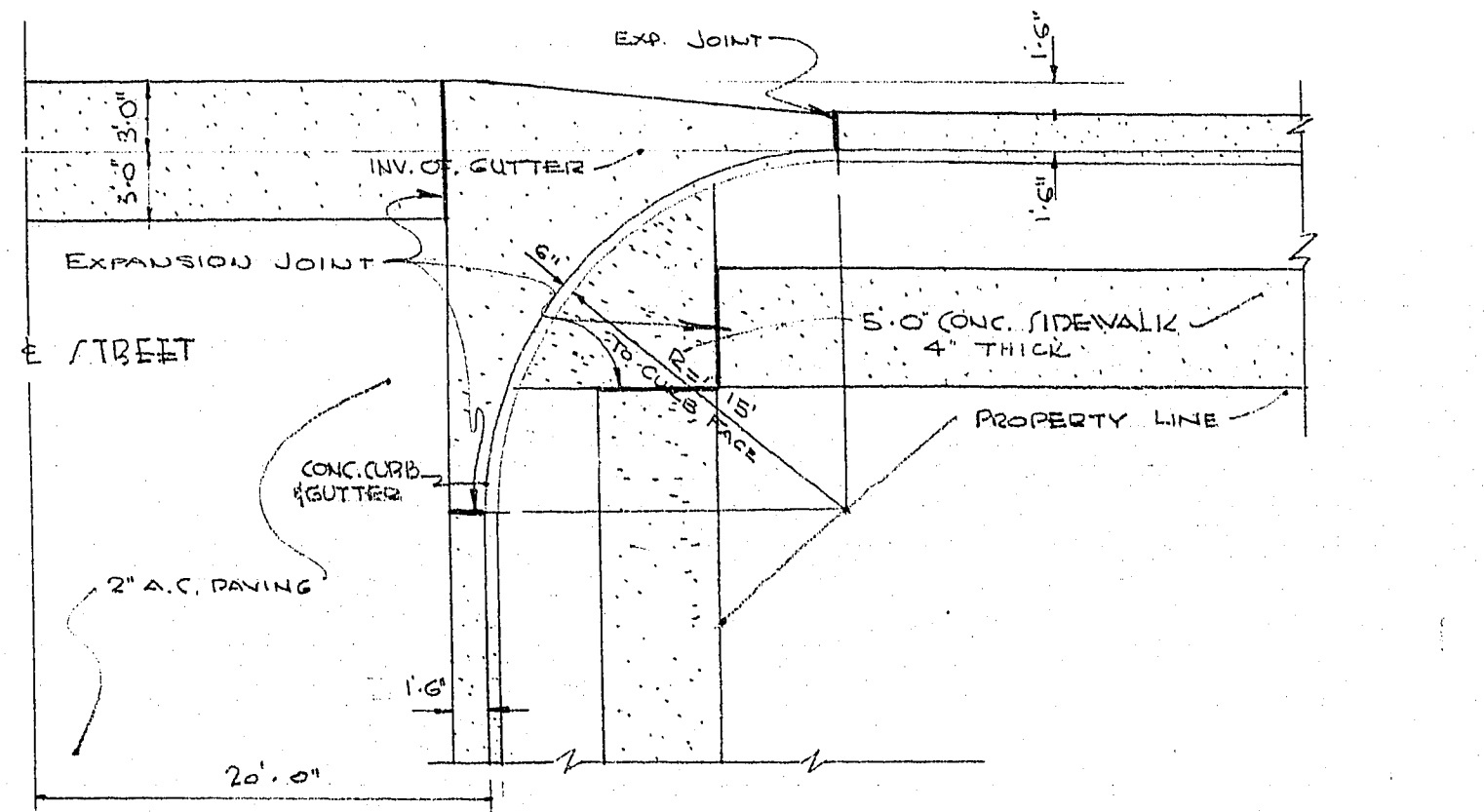
GENERAL LAYOUT AND WATER PLAN

Approval of this plan by the City of Las Vegas, Nevada, does not relieve the Subdivider of responsibility for errors in calculation, design, or planning by the Subdivider's Engineer or Surveyor.

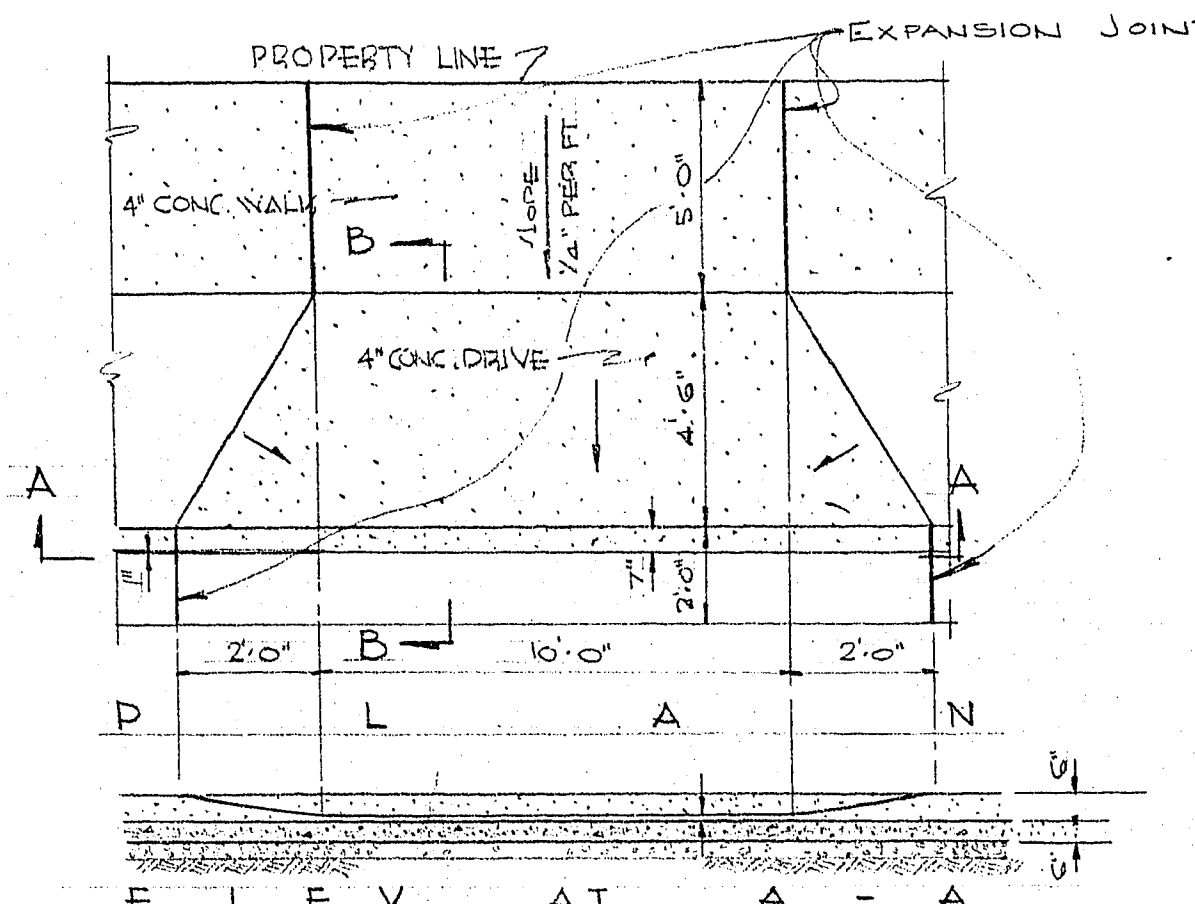
APPROVED: *Ray Pad*
CITY ENGINEER, RE. 208
Water Co.
WATER CO.

FIRE HYDRANT LOCATIONS APPROVED:
Calvin Smith
CITY FIRE CHIEF, 9-11-54
DATE

NOTE:
WATER MAIN SHALL BE CAST IRON AND SHALL BE IN ACCORDANCE WITH THE SPECIFICATIONS OF THE LAS VEGAS VALLEY WATER DISTRICT LOCATE & FIRE HYDRANTS 2'-0" FROM FACE OF CURB, INSTALL SERVICE CONNECTIONS TO EACH LOT.

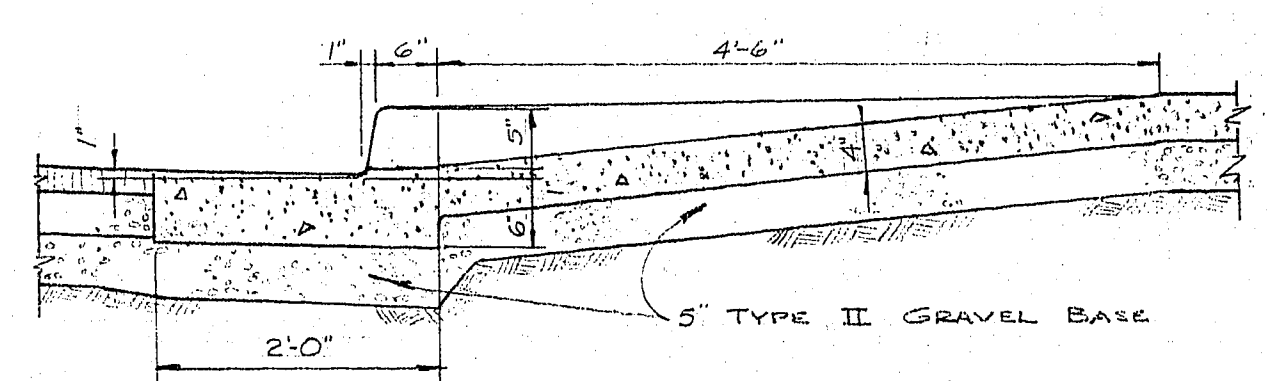


PLAN OF VALLEY GUTTER AT CURB RETURN
SCALE: 1/8" = 1'-0"



CURB AT DRIVEWAYS
SCALE: 1/4" = 1'-0"

LEGEND:
WATER MAIN: ---
FIRE HYDRANT: HO
GATE VALVE: ⊕



SECTION B-B
SCALE: 3/4" = 1'-0"

BENCH MARK
CITY OF LAS VEGAS T.P.M. 25' R. OF E
OAKLEY BOULEVARD STA. 10+05. NAIL IN
GUY POLE DESIGNATED 27-37-ELEV. 1830.746

C-5-21
GENERAL LAYOUT & CONSTRUCTION DETAILS
STREET IMPROVEMENTS AND WATER MAINS
FOR
DAWSON PARK
CITY OF LAS VEGAS, STATE OF NEVADA
SCALE: RAYMOND L. QUIGLEY CIVIL ENGINEER
DATE: 105 NORTH 10TH ST LAS VEGAS, NEVADA
JUNE '54
DRG. NO. 1
OF 1

1071-1202