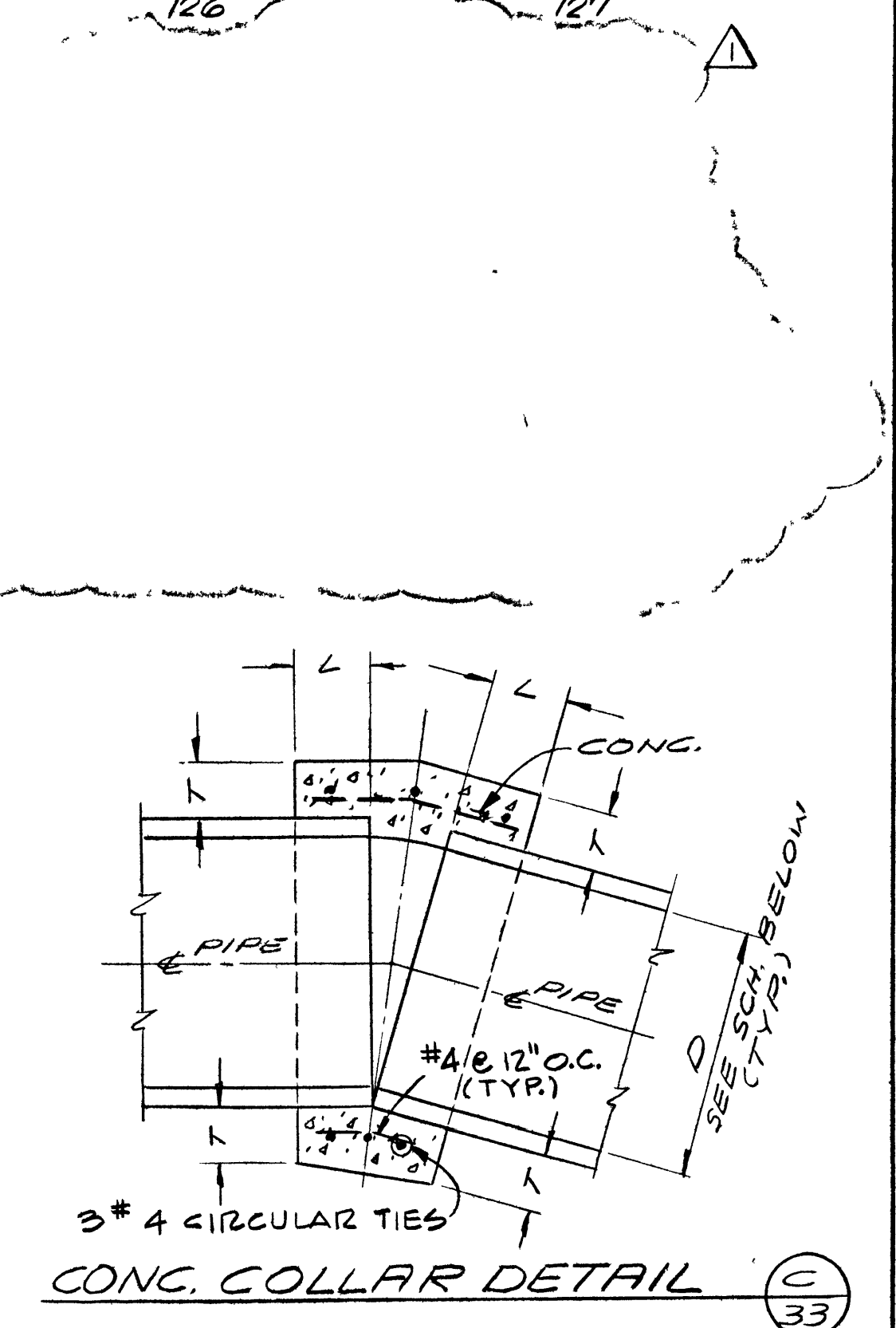


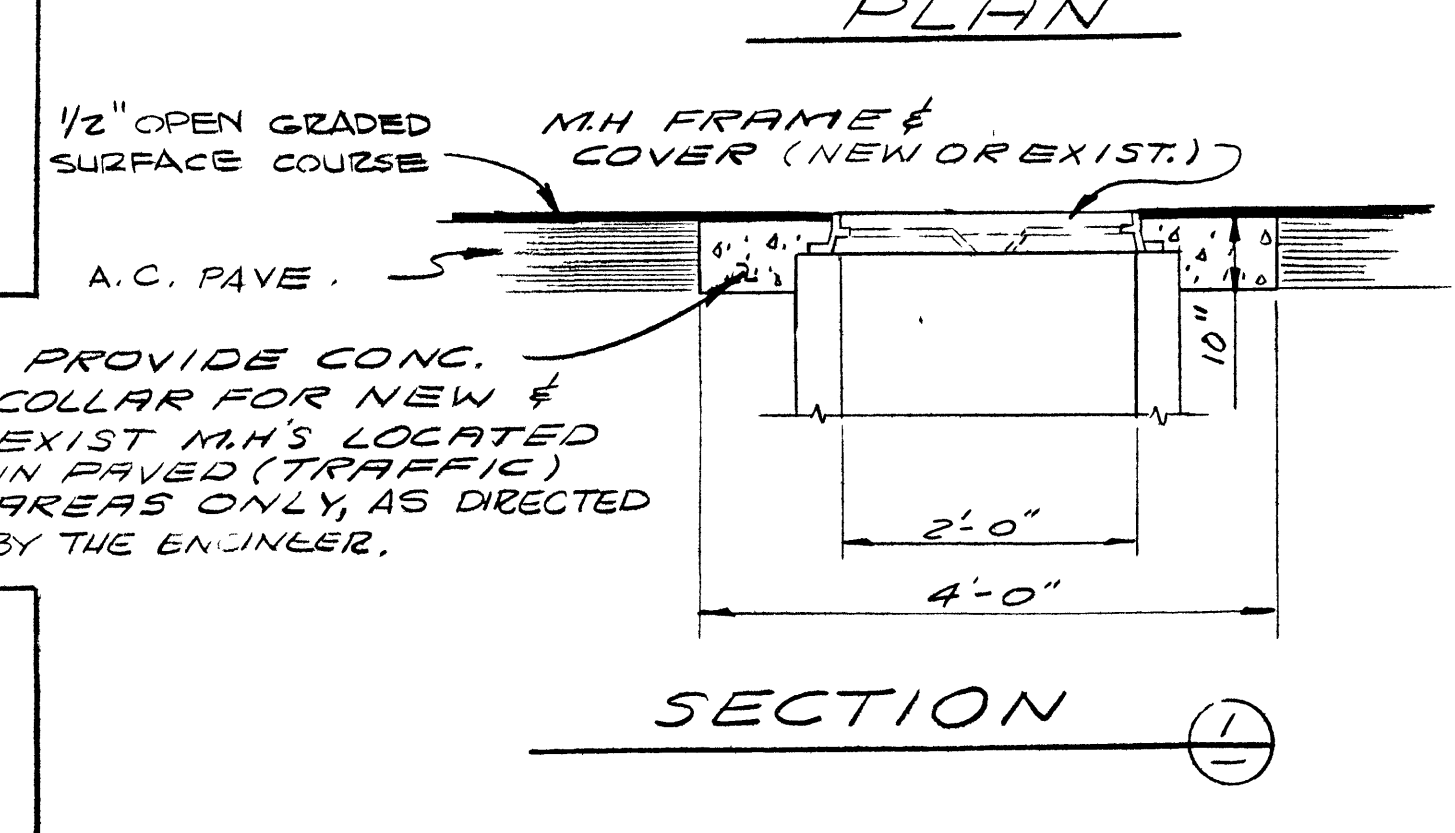
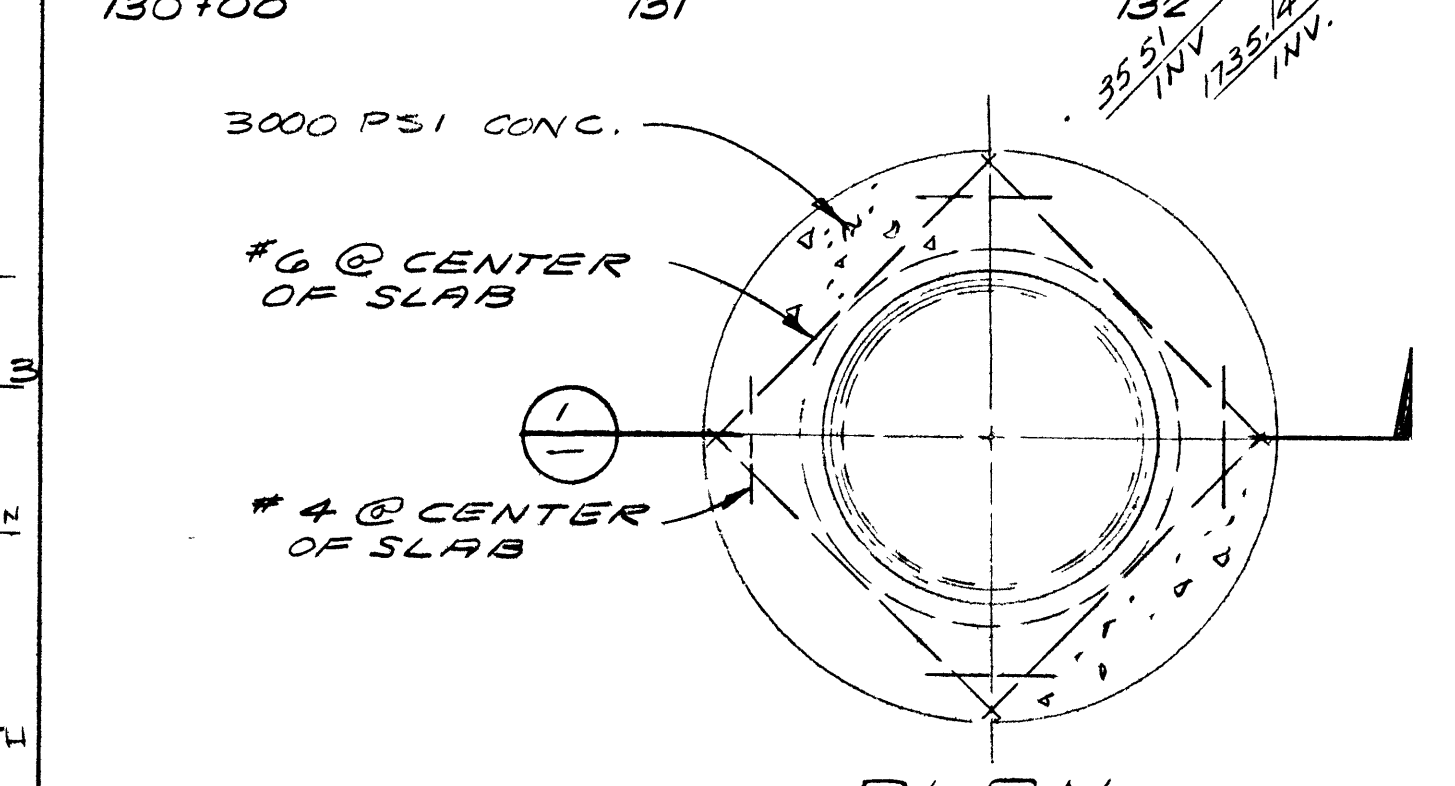
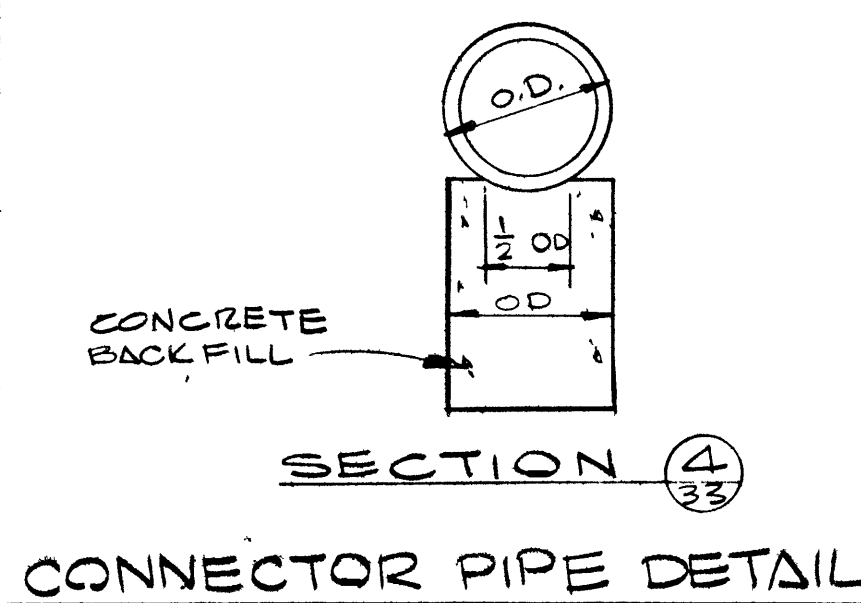
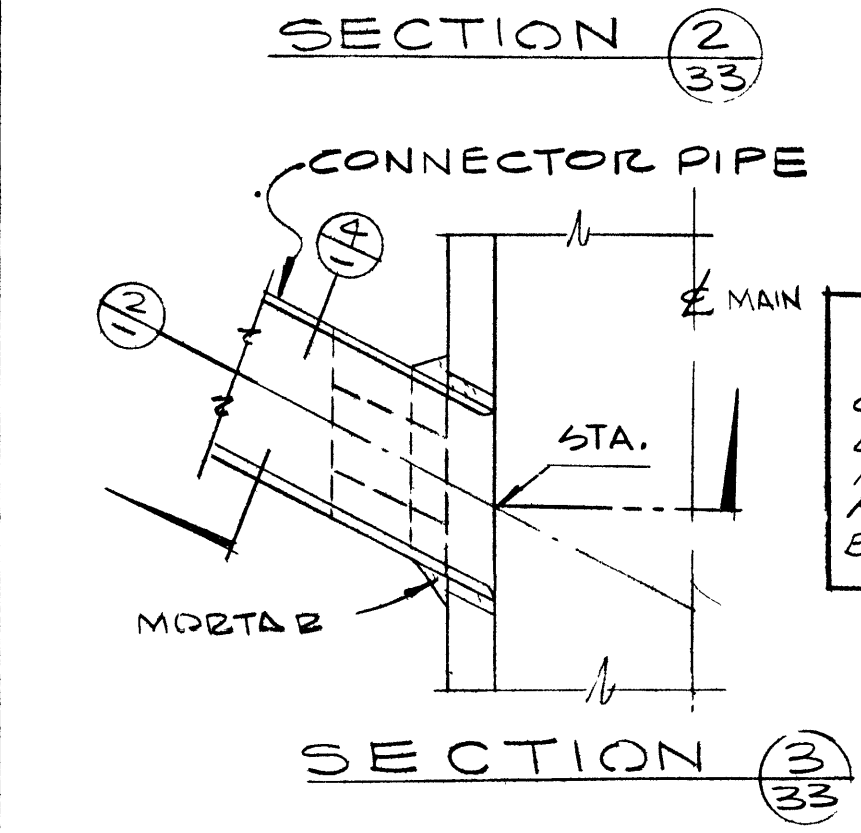
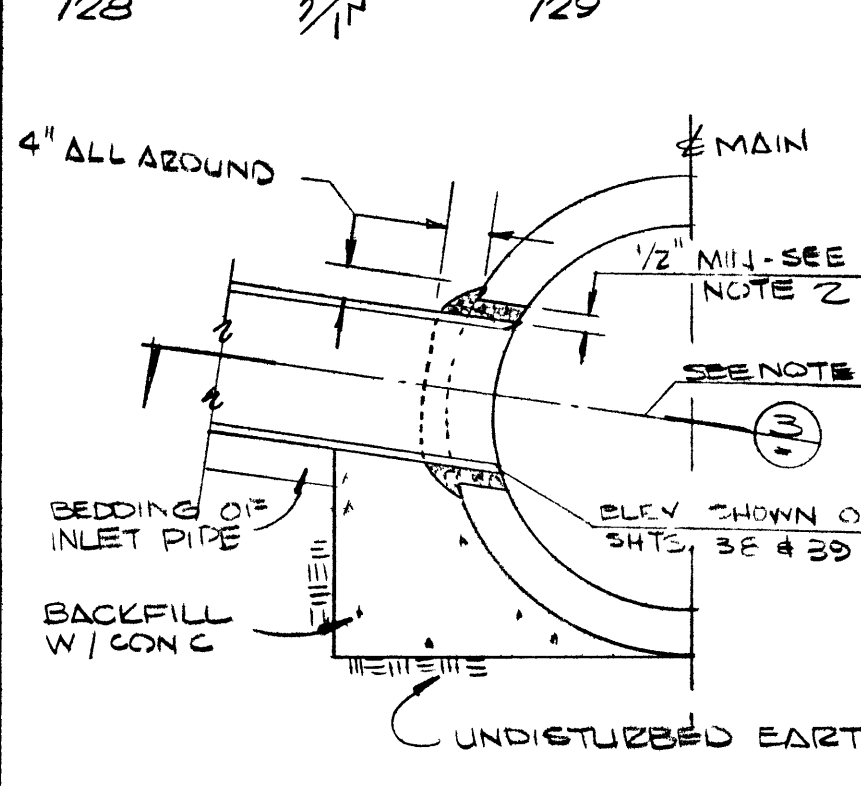
FITTING	PIPE SIZE (IN.)			
	4"	6"	8"	10"
1 1/4° ELL	5	10	18	30
22 1/2° "	10	20	*	*
45° "	19	*	*	*

* SPECIAL DESIGN REQUIRED



SCHEDULE		
D	L	T
12"	12"	4"
15"	12"	6"
18"	12"	6"
42"	18"	10"
48"	18"	10"
52"	18"	10"

NOTE: OMIT REINFORCING ON PIPES 24" AND LESS IN DIAMETER.



NOTES:
 1) CENTER LINE OF INLET SHALL BE ON RADIUS OF MAIN STORM DRAIN
 2) THE OPENING INTO THE MAIN STORM DRAIN SHALL BE THE OUTSIDE DIAMETER OF THE INLET PIPE PLUS 1" MIN-3" MAX.
 3) STATION SPECIFIED ON DRAWINGS APPLIES AT THE INTERSECTION OF INSIDE WALL OF MAIN STORM DRAIN & C/L OF INLET PIPE.

FITTING	PIPE SIZE (IN.)			
	4"	6"	8"	12"
1 1/4° ELL	1.0	1.0	1.5	2.0
22 1/2° "	1.0	1.5	3.0	6.0
45° "	1.5	3.0	5.5	8.0
90° "	2.5	5.5	9.5	22.0
TEE OUTLETS	2.0	4.0	7.0	15.0
DEAD ENDS & VALVES	2.0	4.0	7.0	15.0

NOTES:
 1) ALL THRUST BLOCKS TO BE POURED AGAINST UNDISTURBED EARTH
 2) FOR THRUST @ VALVES - SEE SHT. 35
 3) FIGURES FOR SCHEDULE LEFT ARE BASED ON A SOIL BEARING VALUE OF 1500 LBS/SQ.FT.

REGIONAL STREET AND HIGHWAY COMMISSION, CLARK CO., NEV.
 EAST CHARLESTON BLVD. FROM FREMONT ST. TO NELLIS BLVD
 STORM DRAIN PLAN AND PROFILE
 120+00 TO 132+44.09 AND DETAILS

WALLACE - MONTGOMERY, A JOINT VENTURE
 MONTGOMERY ENGINEERS OF NEVADA
 735-7198
 LAS VEGAS, NEVADA

RECOMMENDED BY
 G. C. WALLACE
 CONSULTING ENGINEER
 735-5709

REV. DATE DESCRIPTION
 1815 5/6/73 AS-BUILT
 2915 5-2-73 DATE

SHEET 33 OF 53 SHEETS