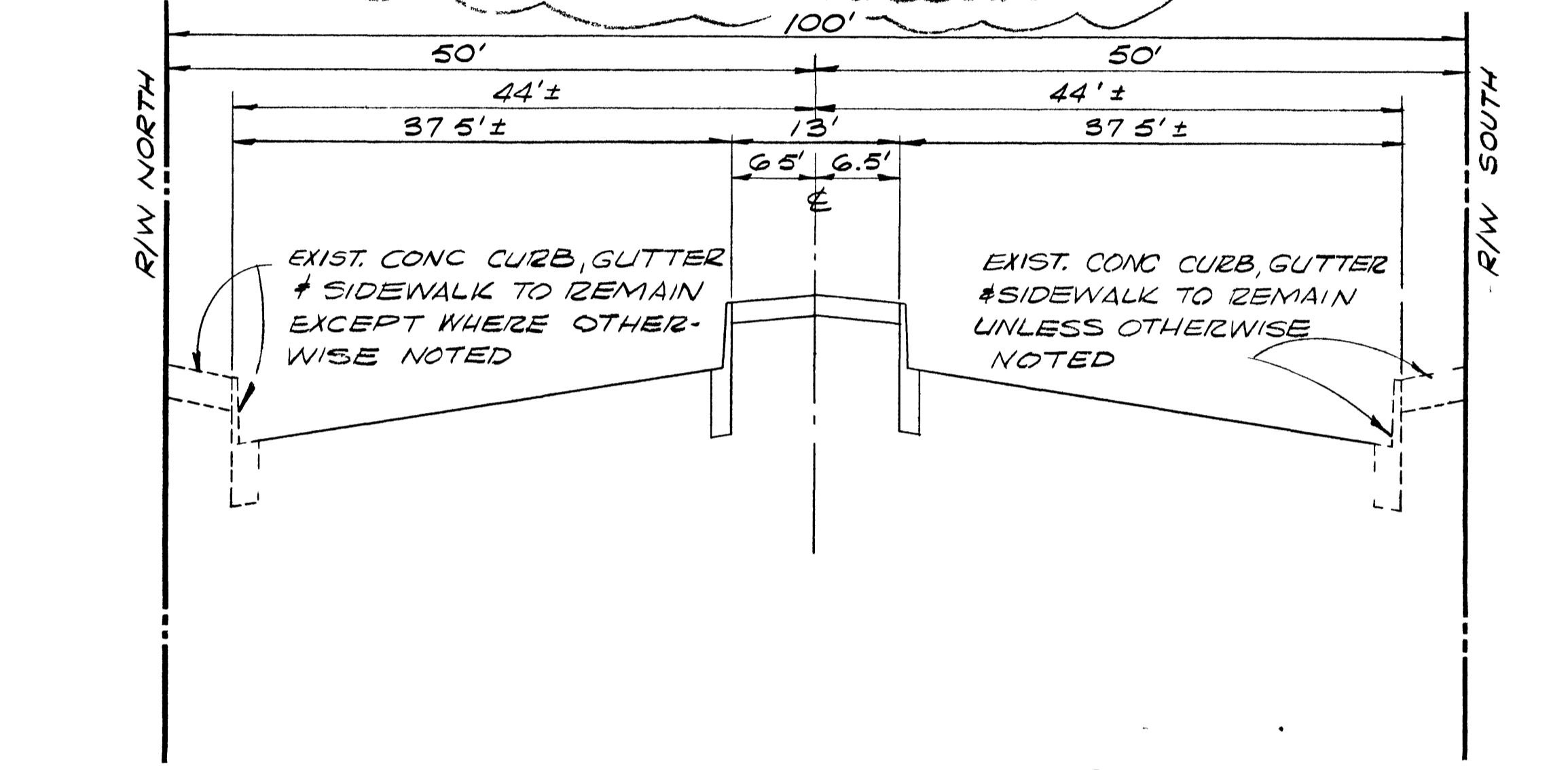
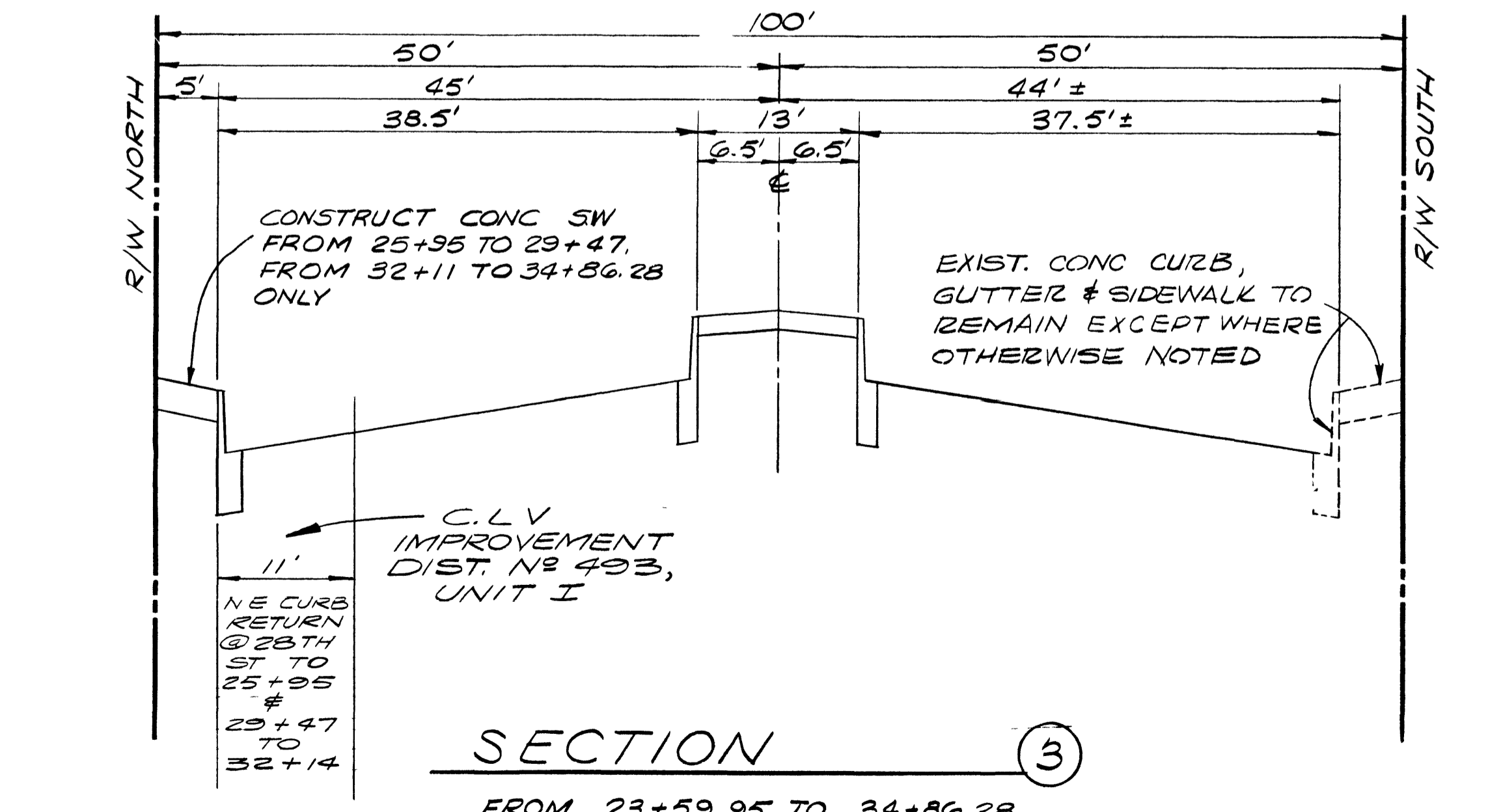


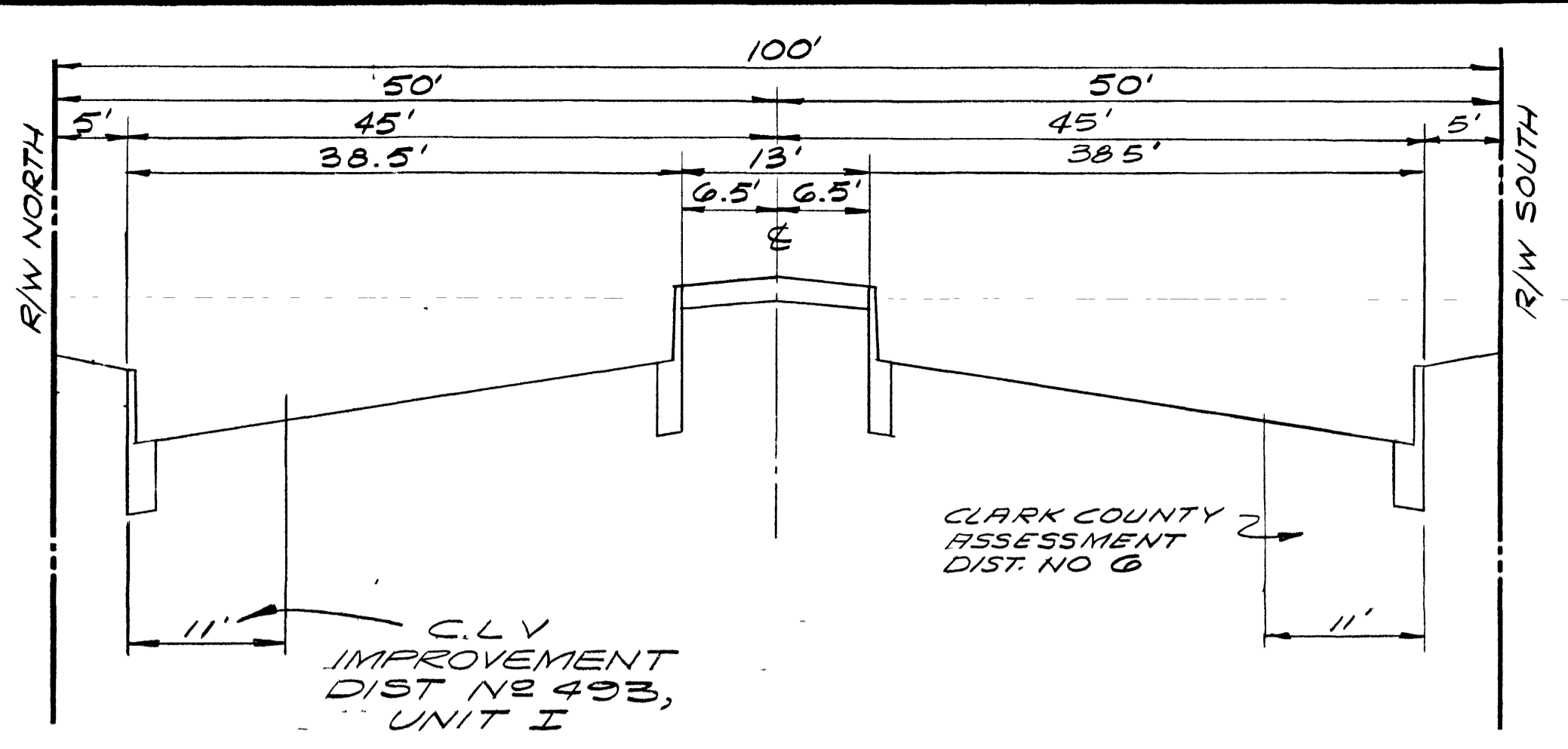
SECTION 1  
FROM 8+95.1 TO 16+59.19



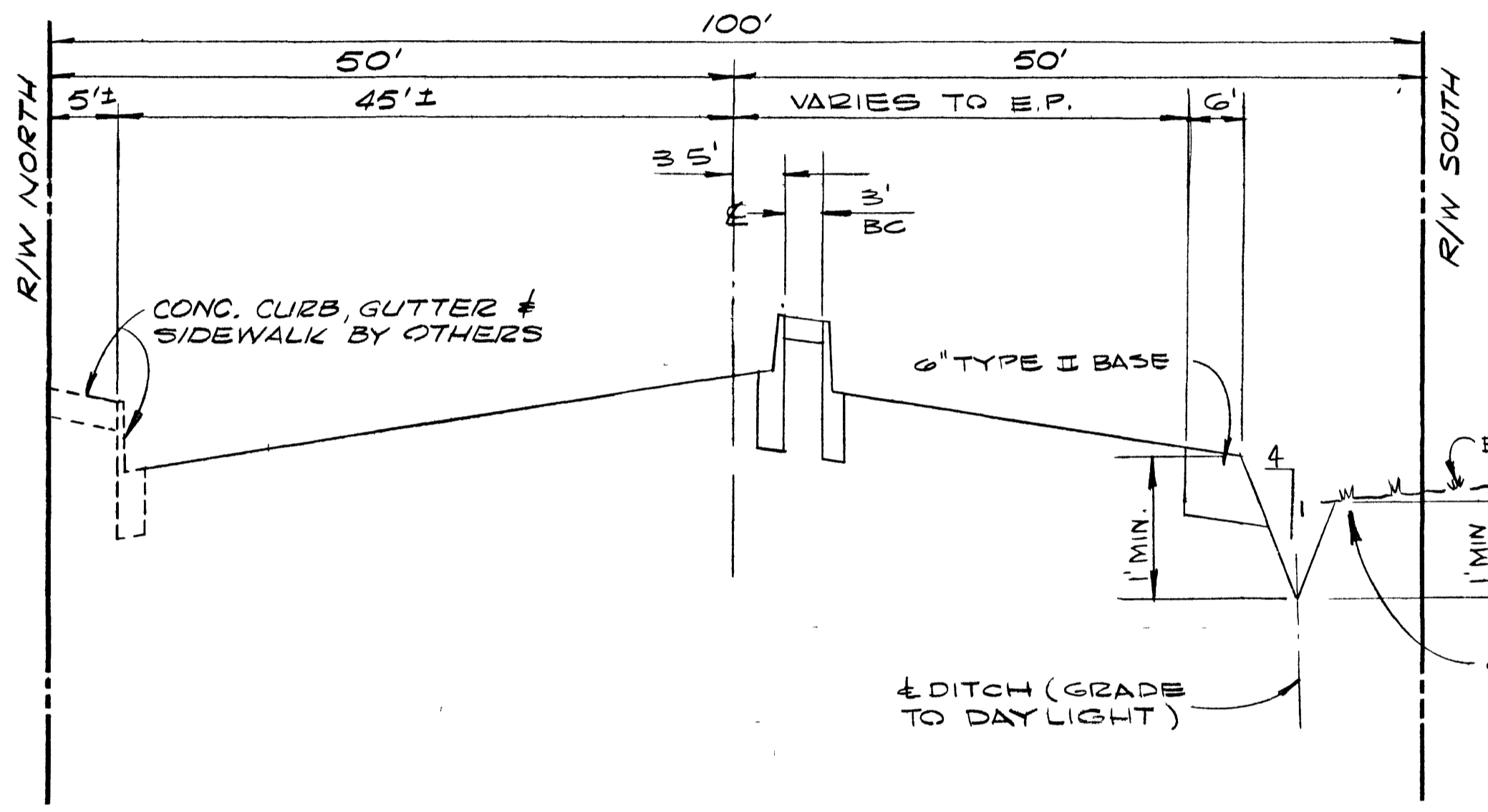
SECTION 2  
FROM 20+70 TO 22+28.50



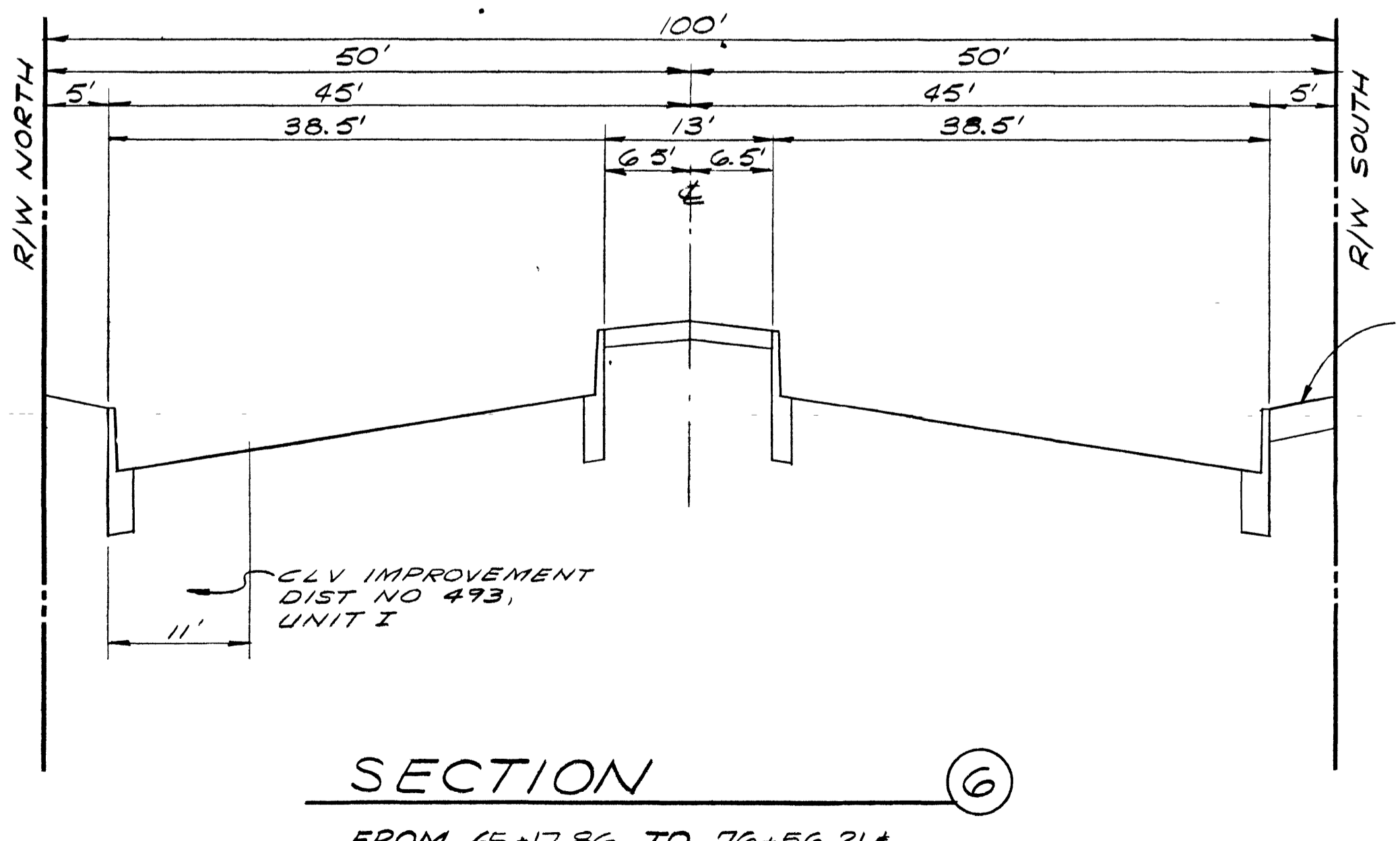
SECTION 3  
FROM 23+59.95 TO 34+86.28



SECTION 4  
FROM 41+46.05 TO 65+17.86  
80+19.75 TO 85+65.32  
89+62.9 TO 95+00.89  
105+05 TO 110+31.15



SECTION 5  
FROM 168+90.07 TO 171+43.92



SECTION 6  
FROM 65+17.86 TO 76+56.21#  
79+59.21 TO 80+19.75

SCALE: HORIZ: 1"=10'  
VERT: 1"=1'

RECOMMENDED BY B.C. WALLACE	DATE 12/15/97	DESCRIPTION ELIMINATE A.D. #6 IMPROVE SIDE CHAS - 25TH TO 28TH - 5'-BUILT
RECOMMENDED BY B.C. WALLACE	DATE 12/15/97	DESCRIPTION ELIMINATE A.D. #6 IMPROVE SIDE CHAS - 25TH TO 28TH - 5'-BUILT
<p><b>WALLACE - MONTGOMERY, A JOINT VENTURE</b> MONTGOMERY ENGINEERS OF NEVADA 735-5709 LAS VEGAS, NEVADA</p>		
<p>REGIONAL STREET AND HIGHWAY COMMISSION, CLARK CO., NEV. EAST CHARLESTON BLVD FROM FREMONT ST TO NELLIS BLVD. TYPICAL STREET SECTIONS I</p>		
SHEET		23
OF 53 SHEETS		