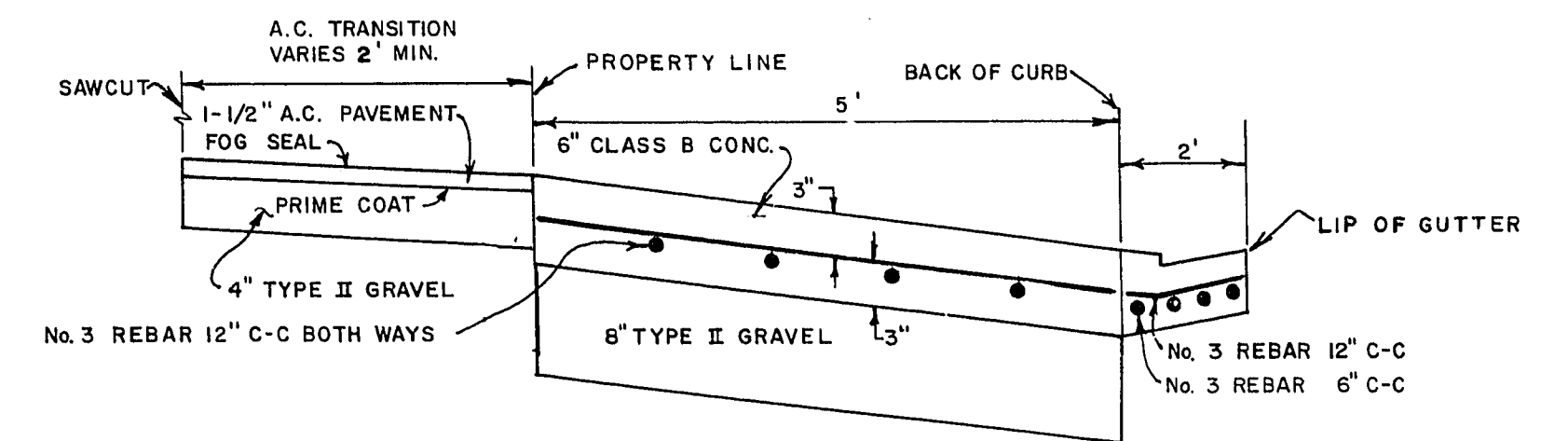
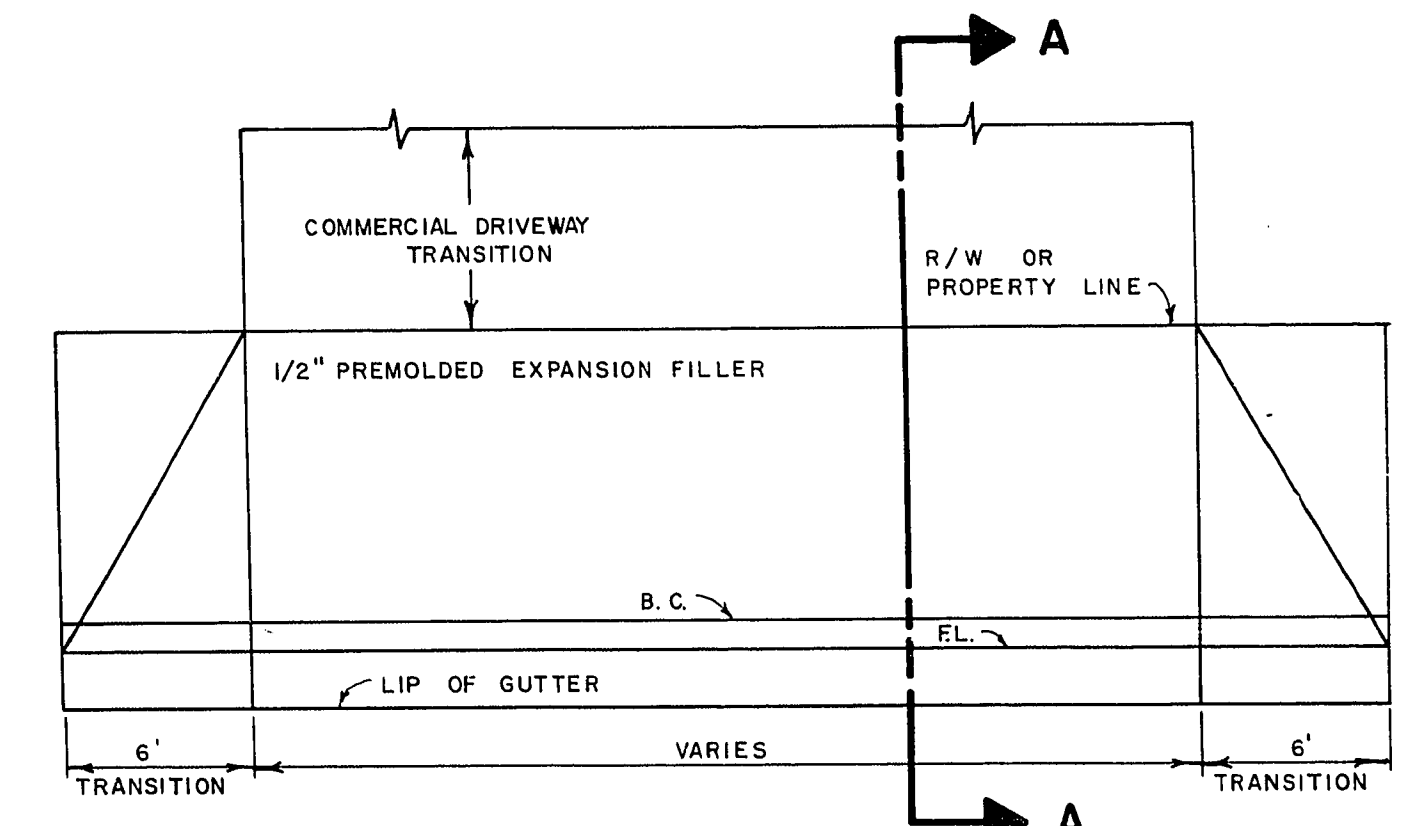
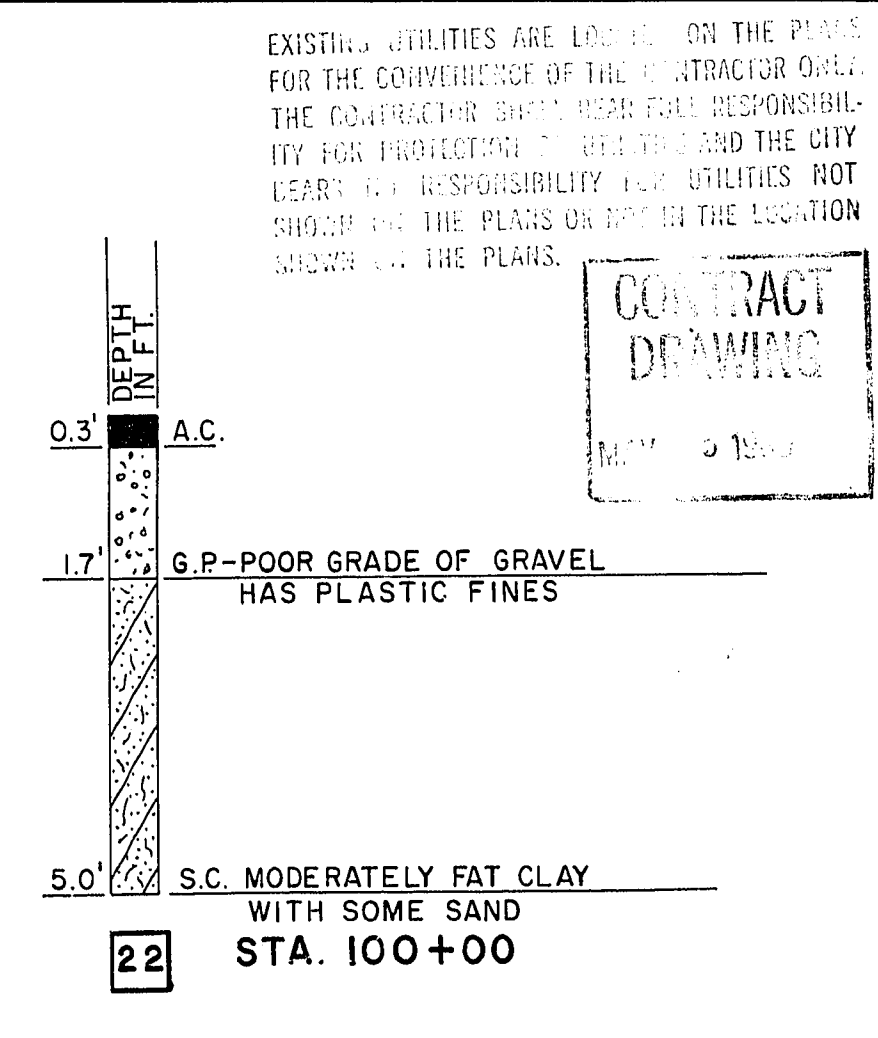
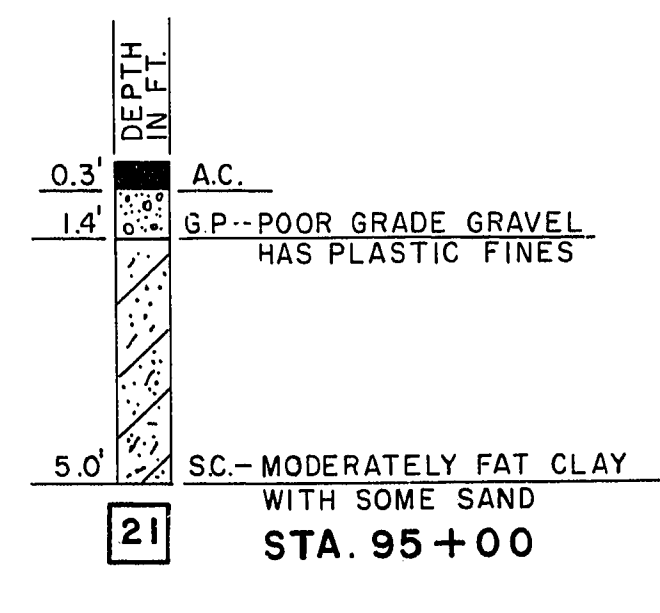
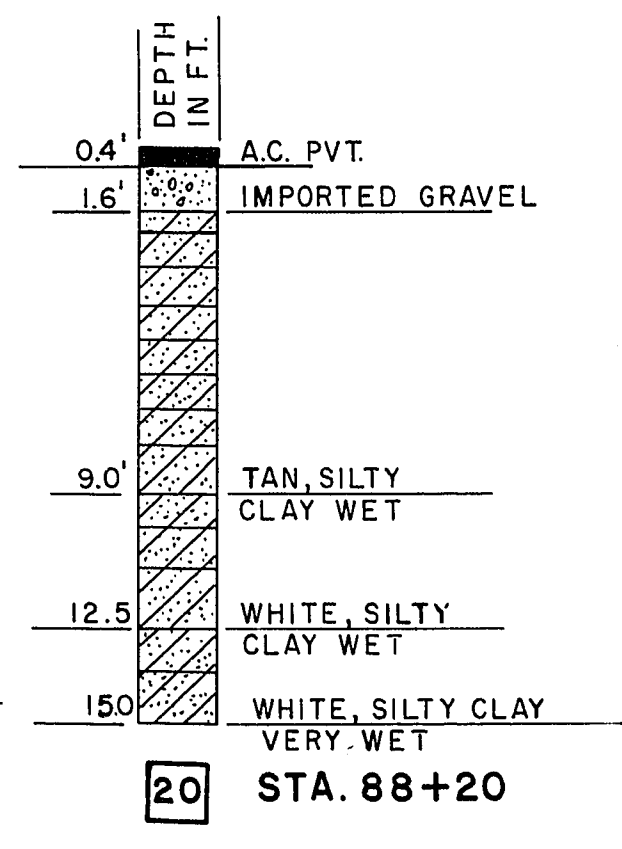
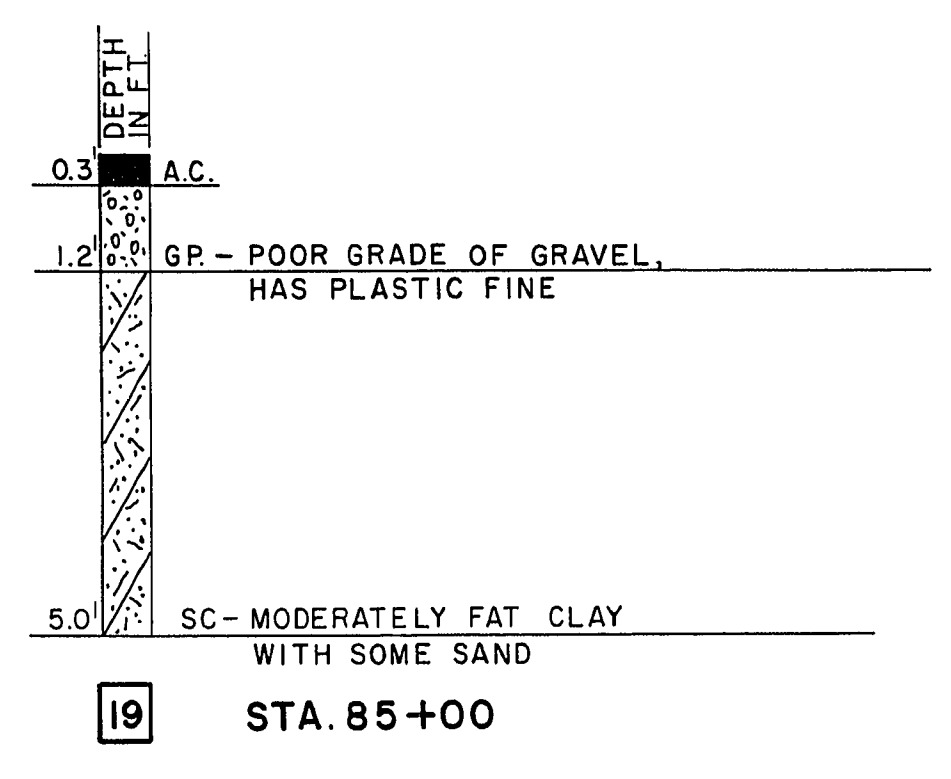
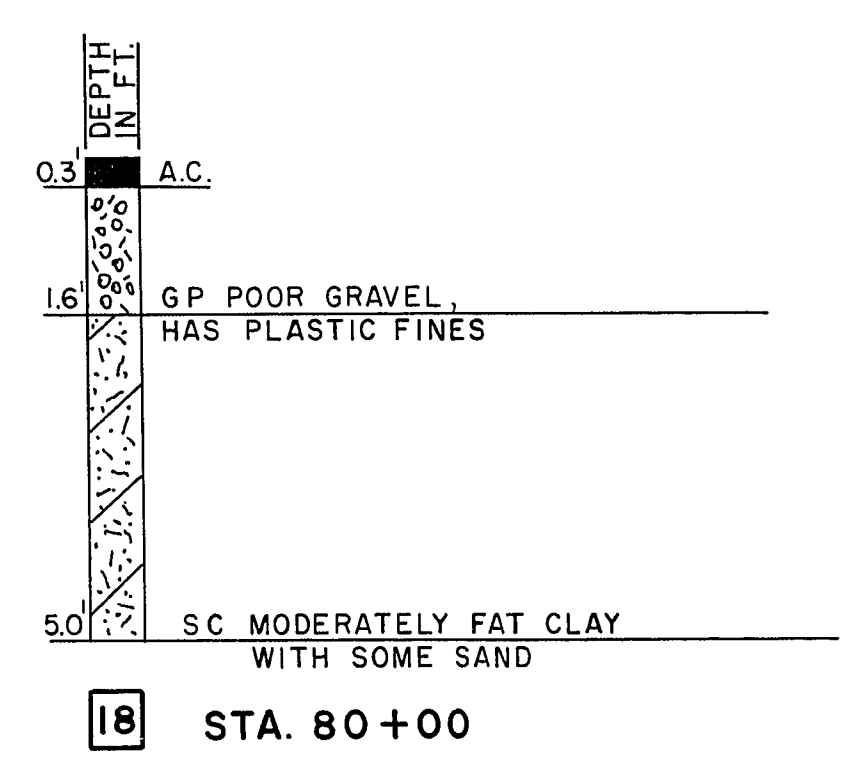
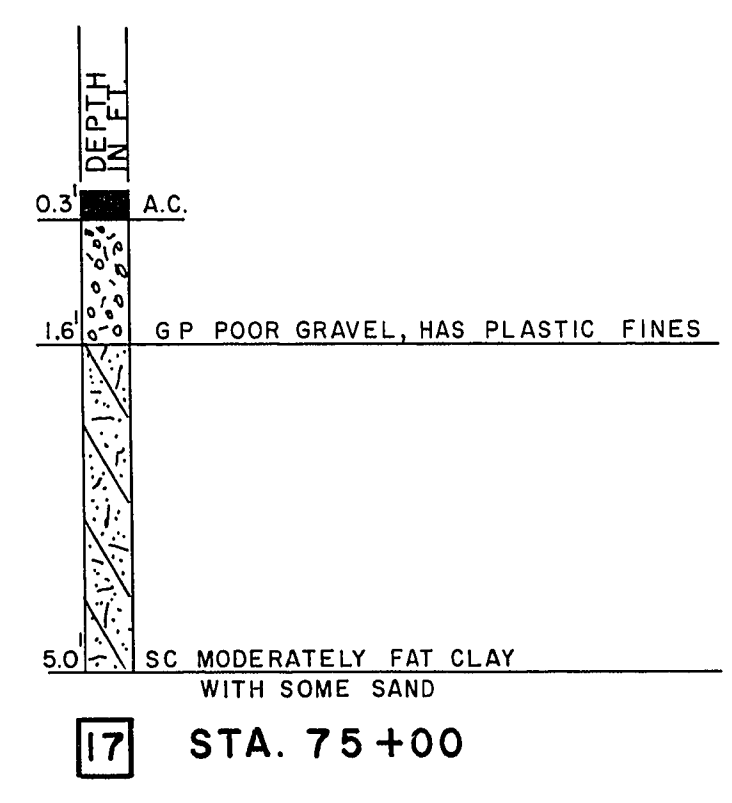
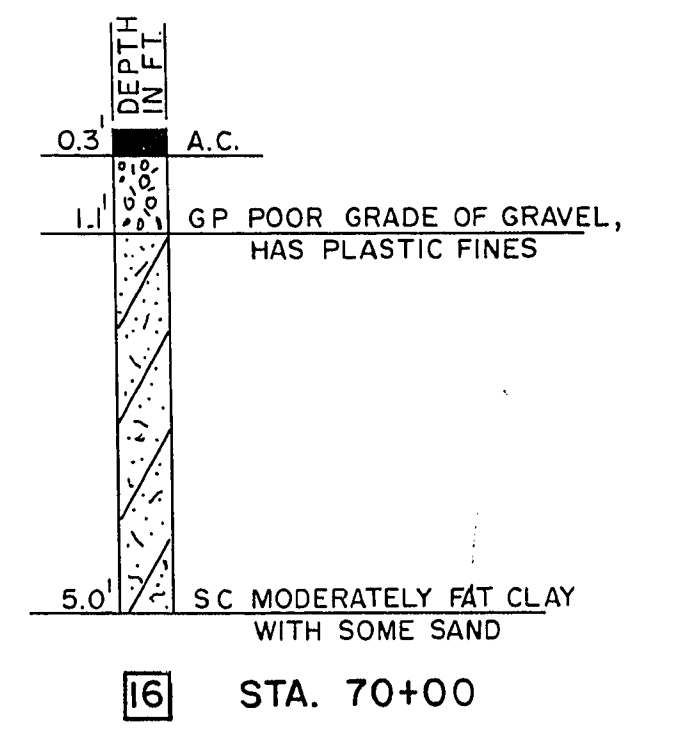
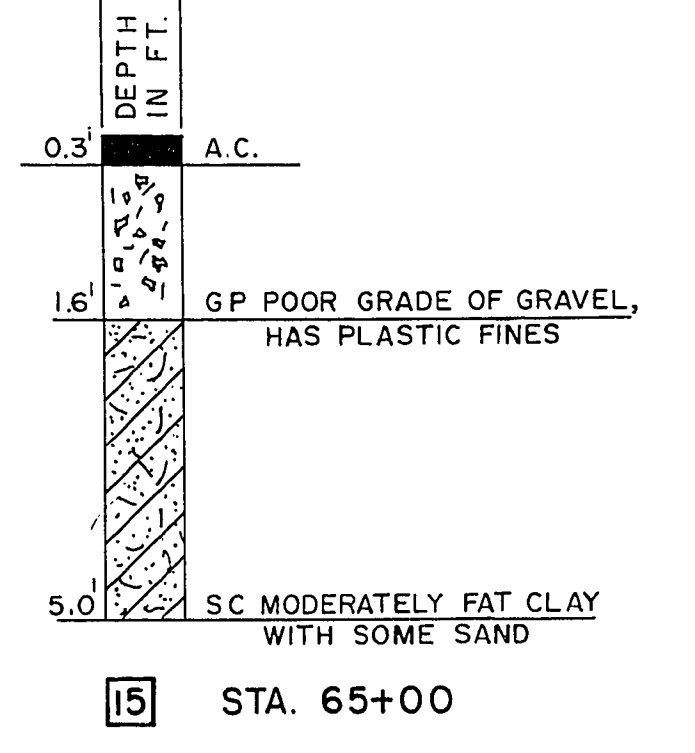
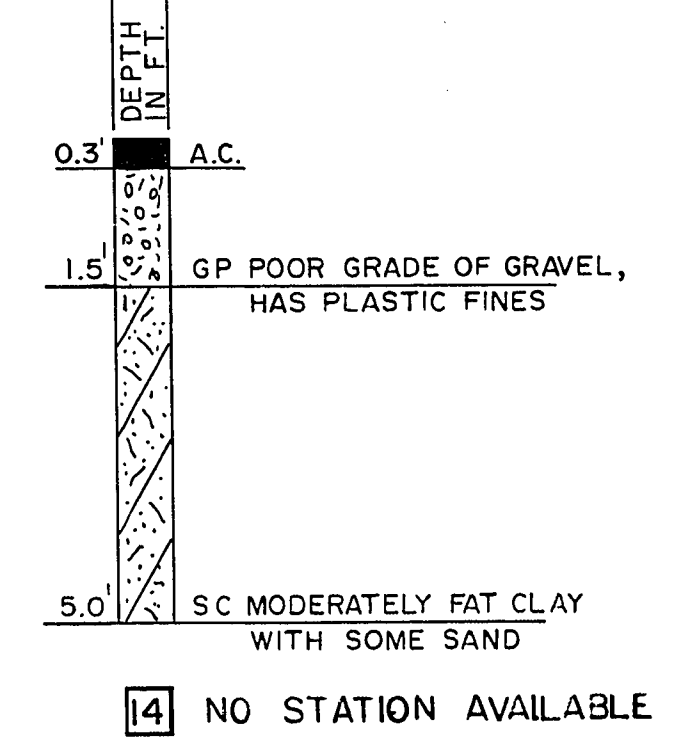
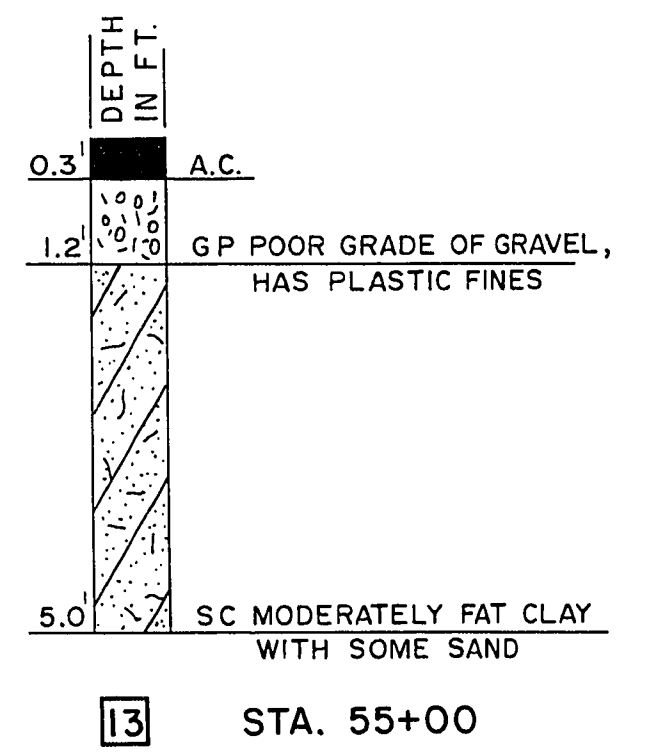
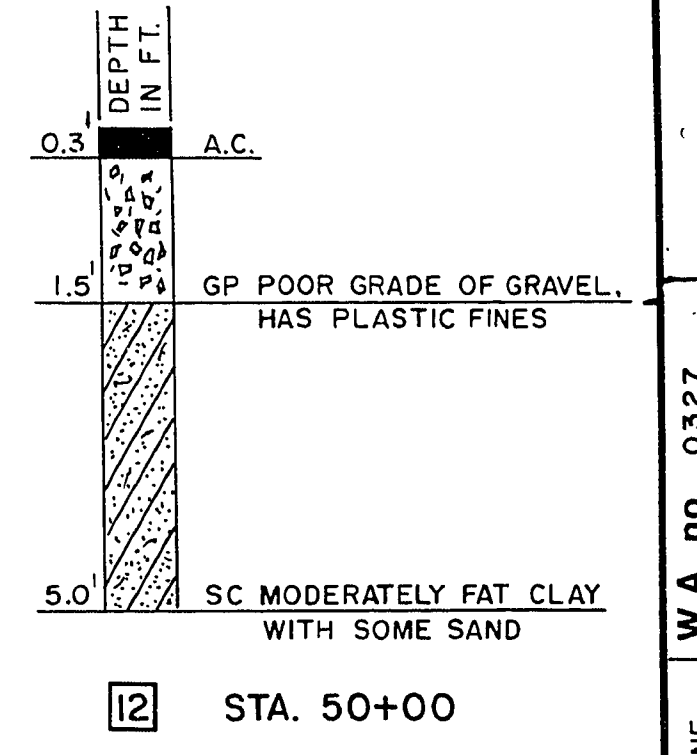
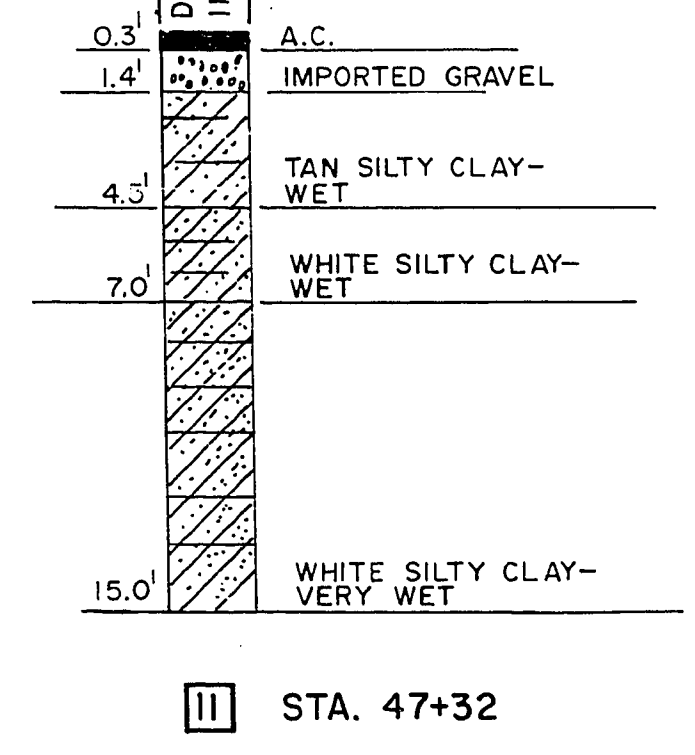
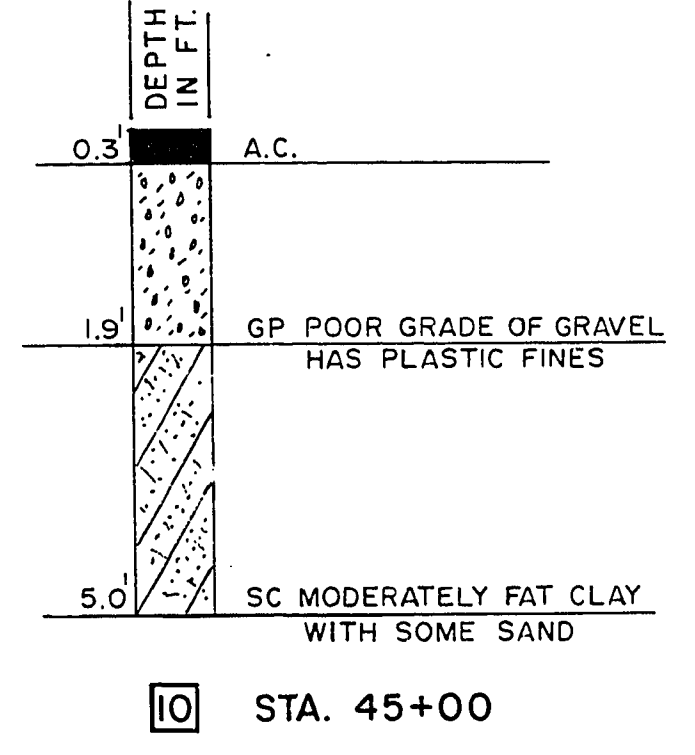
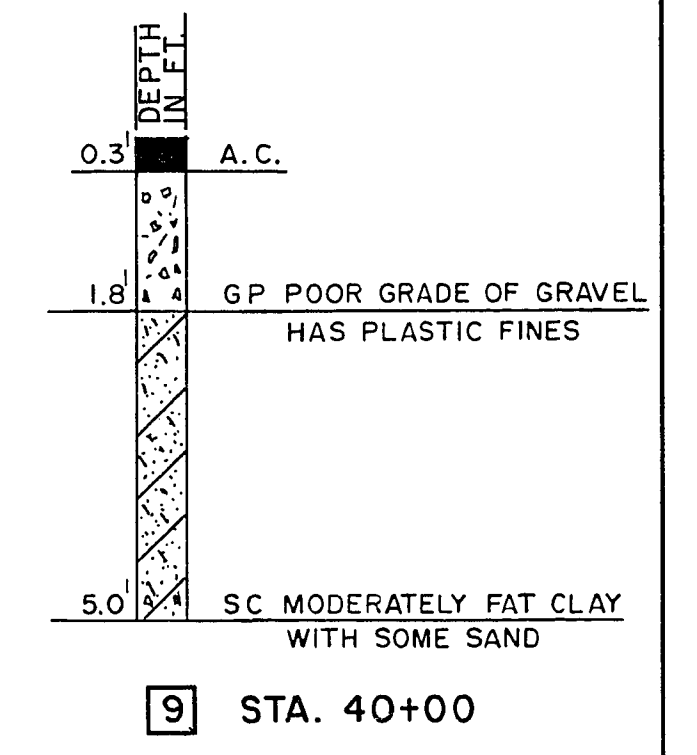
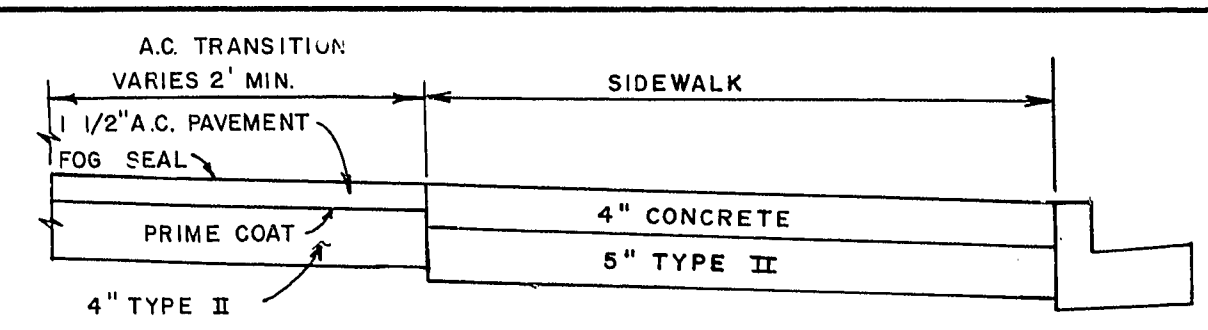


SECTION E-E
SCALE: H-1"=6'
V-1"=3'

NOTE: FRONTAGE ROAD ENTRANCE AND RAMP TO BE A MONOLITHIC POUR.



COMMERCIAL DRIVEWAY DETAIL WITH 9" CURB



EXISTING UTILITIES ARE LOCATED ON THE PLANS FOR THE CONVENIENCE OF THE CONTRACTOR ONLY. THE CONTRACTOR SHALL BEAR FULL RESPONSIBILITY FOR PROTECTING ALL UTILITIES AND THE CITY DEPARTMENT SHALL BEAR NO RESPONSIBILITY FOR UTILITIES NOT SHOWN ON THE PLANS OR NOT IN THE LOCATION SHOWN ON THE PLANS.



Scale (H) AS SHOWN	Scale (V)	W.A. no. 0327
Fid. bk. no. 70-5XA	Date FEB 2, 1980	Drawn by P. SULLIVAN
Design by C. KREHNOVI	Approved by the Director of Public Services	
Date 2-25-80		Revisions
Department of Public Services Engineering Design Division POTHOLE DETAILS, C & G DETAILS, DRIVEWAY DETAILS, AND A.C. TRANSITION DETAIL EAST CHARLESTON BLVD. 10th ST. TO EASTERN AVE. PHASE II		
		Drawing no. 10/V-829B 4/83

174-74