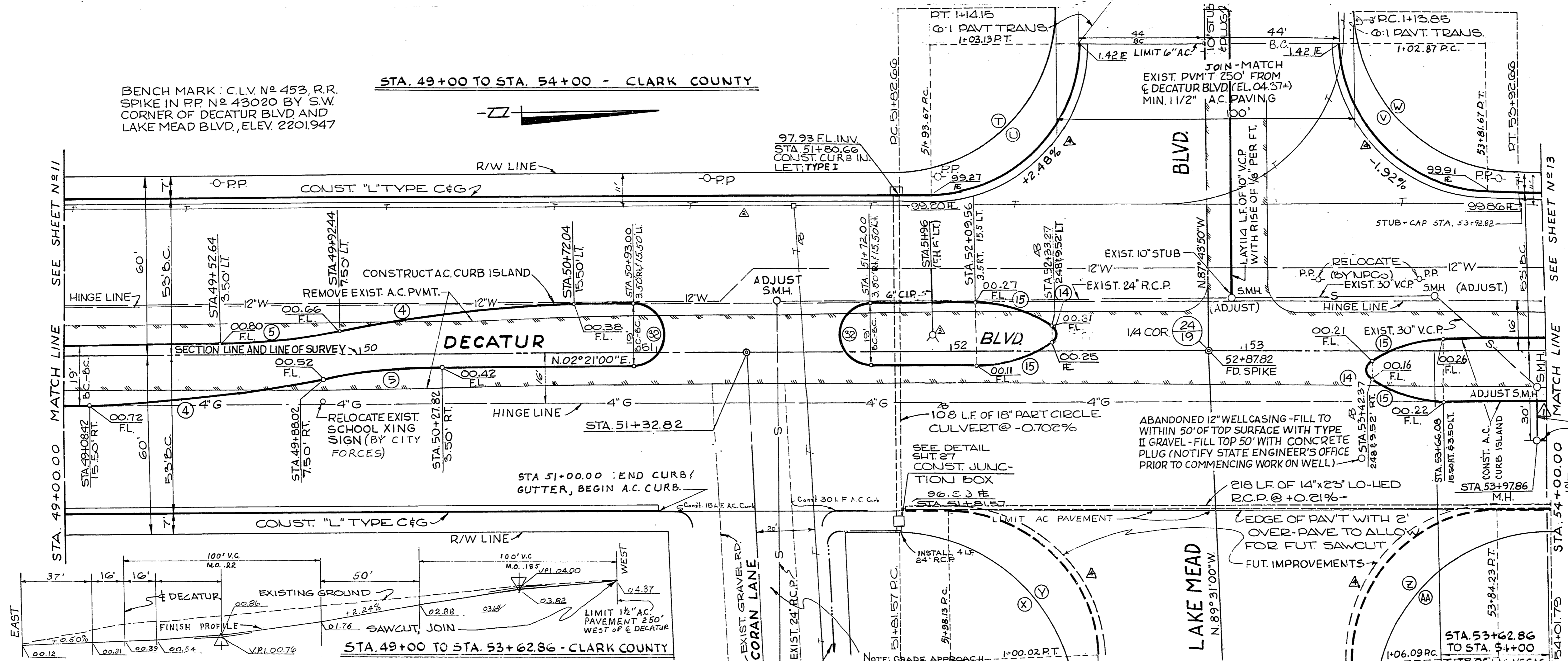
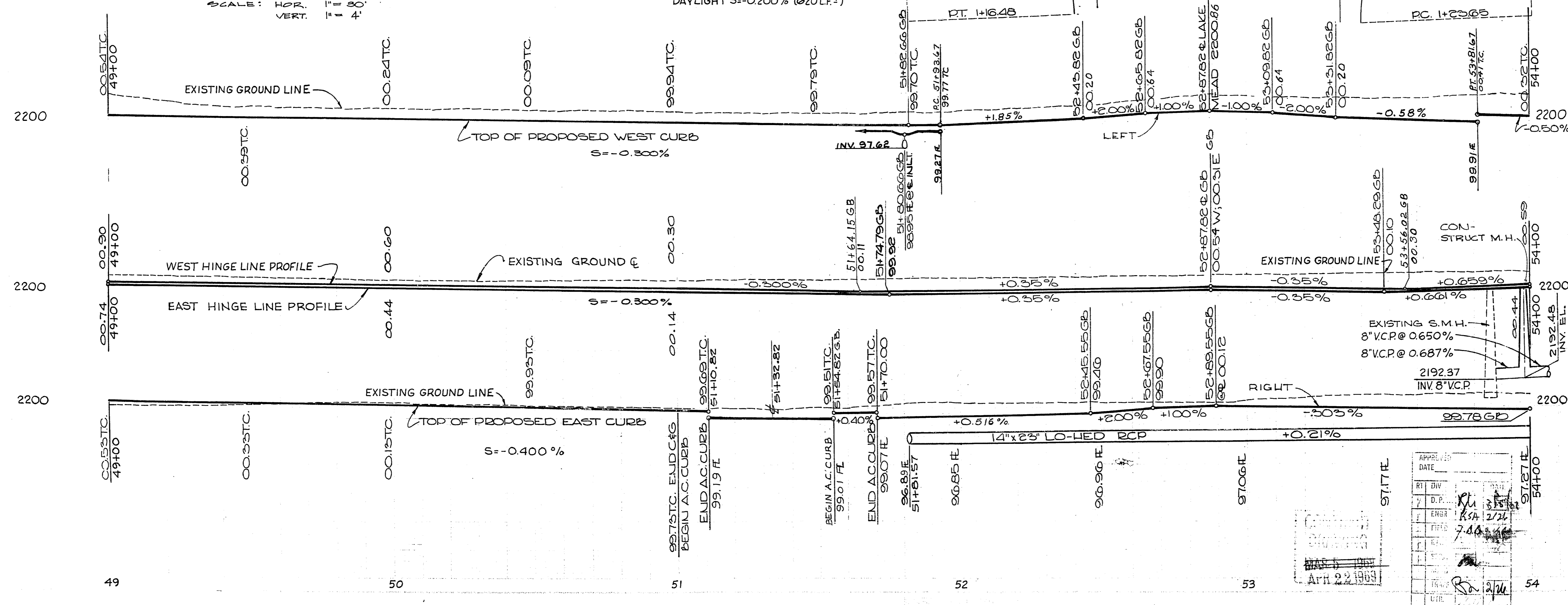


BENCH MARK: C.L.V. N^o 453, R.R. SPIKE IN PP N^o 43020 BY S.W. CORNER OF DECATUR BLVD AND LAKE MEAD BLVD, ELEV. 2201.947

STA. 49+00 TO STA. 54+00 - CLARK COUNTY



LAKE MEAD & PROFILE - STATION 52+81.82



ITEM	DESCRIPTION	RSH	C. C. S.A.D.	CL.V.	TOTAL UNIT
121.518	14"x23" LO-LED RCP HE III	218			218 LF.
122.216	PART CIRCLE CULVERT	104			104 LF.
123.208	8" V.C.P. (CL.V. S.I.D.)			20'	20 LF.
123.210	10" V.C.P.			114'	114 LF.
201.100	EXCAVATION	437	349	14	4734 C.Y.
201.100	SAWCUT A.C. PAVEMENT	21			21 LF.
302.100	TYPE I GRAVEL BASE	789.333	95.69		884.702 C.Y.
302.200	TYPE II GRAVEL BASE	748.587	43.32		791.914 C.Y.
320.100	BIT PENETRATION	598.599			598.599 S.Y.
333.100	BIT FOG SEAL	1052.1437		143'	1052.1437 S.Y.
333.500	1/2" OPEN GRADE PLANT MIX	5007.445			5007.445 S.Y.
334.210	A. C. CURB	789.701		70'	789.701 S.Y.
334.212	G. A. C. PAVEMENT	5007.445			5007.445 S.Y.
334.500	2-1/2" A.C. PAVEMENT	311.327			311.327 S.Y.
340.100	24" L TYPE CURB & GUTTER	682.669			682.669 LF.
340.200	18" L TYPE CURB & GUTTER	87			87 LF.
340.311	4" ISLAND CONCRETE	234			234 S.F.
500.200	CURB INLET				1 EACH
500.500	JUNCTION BOX				1 EACH
500.901	PLUG WELL				1 EACH
512.100	MANHOLE (C.L.V. S.I.D.)				1 EACH
512.500	ADJUST MANHOLE			4	4 EACH
500.500	INSTALL FIRE HYDRANT				1 EACH
N.C.	RELOCATE SIGN				1 EACH
N.C.	RELOCATE POWER POLE				2 EACH
121.224	24" R.C.P.	4			4 LF.

* DENOTES CL.V. S.I.D. QUANTITIES

CURVE	DELTA	RADIUS	LENGTH	TANGENT
(4)	11° 28' 42"	400.00'	80.13'	40.20'
(5)	11° 28' 42"	200.00'	40.07'	20.10'
(4)	123° 23' 22"	4.00'	8.61'	7.49'
(15)	28° 18' 19"	50.00'	24.70'	12.61'
(18)	180° 00' 00"	9.50'	29.85'	0
(3)	130° 38' 03"	2.00'	4.56'	4.35'
(3)	8° 38' 45"	83.00'	12.52'	6.27'
(3)	139° 21' 40"	2.00'	4.06'	3.40'
(3)	89° 55' 10"	2.00'	3.14'	2.00'
(3)	130° 38' 31"	2.00'	4.56'	4.35'
(3)	8° 50' 31"	83.00'	12.80'	6.42'
(1)	90° 04' 50"	2.00'	3.14'	2.00'
(1)	90° 04' 50"	55.00'	86.47'	55.08'
(1)	90° 04' 50"	61.00'	95.99'	61.09'
(V)	89° 55' 10"	61.00'	95.73'	60.91'
(V)	89° 55' 10"	55.00'	86.32'	54.92'
(X)	88° 08' 00"	60.00'	92.29'	58.08'
(X)	88° 08' 00"	67.00'	103.06'	64.85'
(Z)	91° 52' 00"	67.00'	107.43'	69.22'
(A)	91° 52' 00"	60.00'	96.20'	61.99'
(1)	90° 04' 50"	50.00'	78.61'	50.07'
(V)	89° 55' 10"	50.00'	78.47'	49.93'
(Y)	88° 08' 00"	50.00'	76.91'	48.40'
(2)	91° 52' 00"	50.00'	80.17'	51.66'

- 3-2767 INSTALL 8" V.C.P.
- 3-2768 ADDED TELEPHONE CONDUIT
- 3-2769 MOVED FIRE HYDRANT TO CENTER OF ISLAND
- 3-2770 REMOVED 6" GATE VALVE AT 51+96
- 4-461 Removed park chop islands; recalc. curb returns

CITY OF LAS VEGAS, NEVADA
ENGINEERING DEPARTMENT

DECATUR BLVD.
WASHINGTON AVE. TO U.S. HIGHWAY N^o 95
STA. 49+00.00 TO STA. 54+00.00

DESIGN DATE	DATE	HORIZONTAL SCALE
G.E.C.	12-12-66	1" = 20'
DRAWN	HURTADO	VERTICAL SCALE
CHECKED	S.C.F.	1" = 5'
CONSULTING ENG.	5-17-68	FB. N ^o
TRAFFIC ENG.		
CITY ENGINEER		

PREPARED BY
TYSON ENGINEERING COMPANY INC.

SHEET 12 OF 42