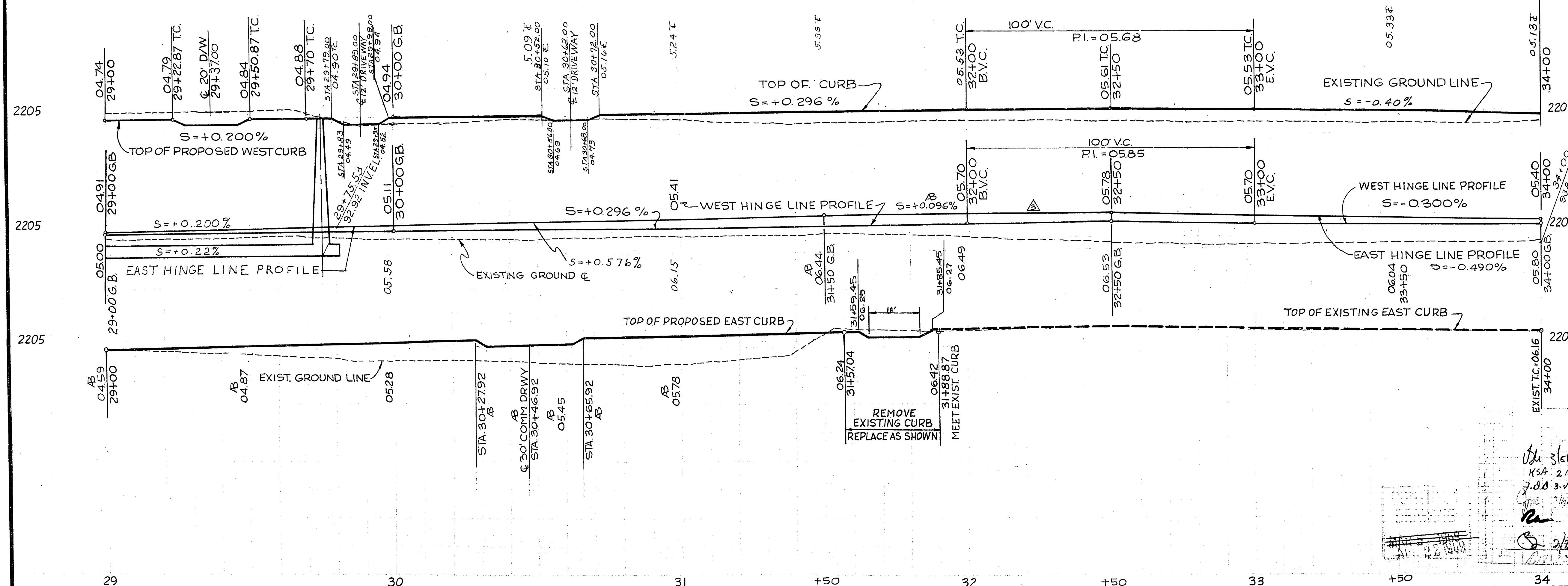
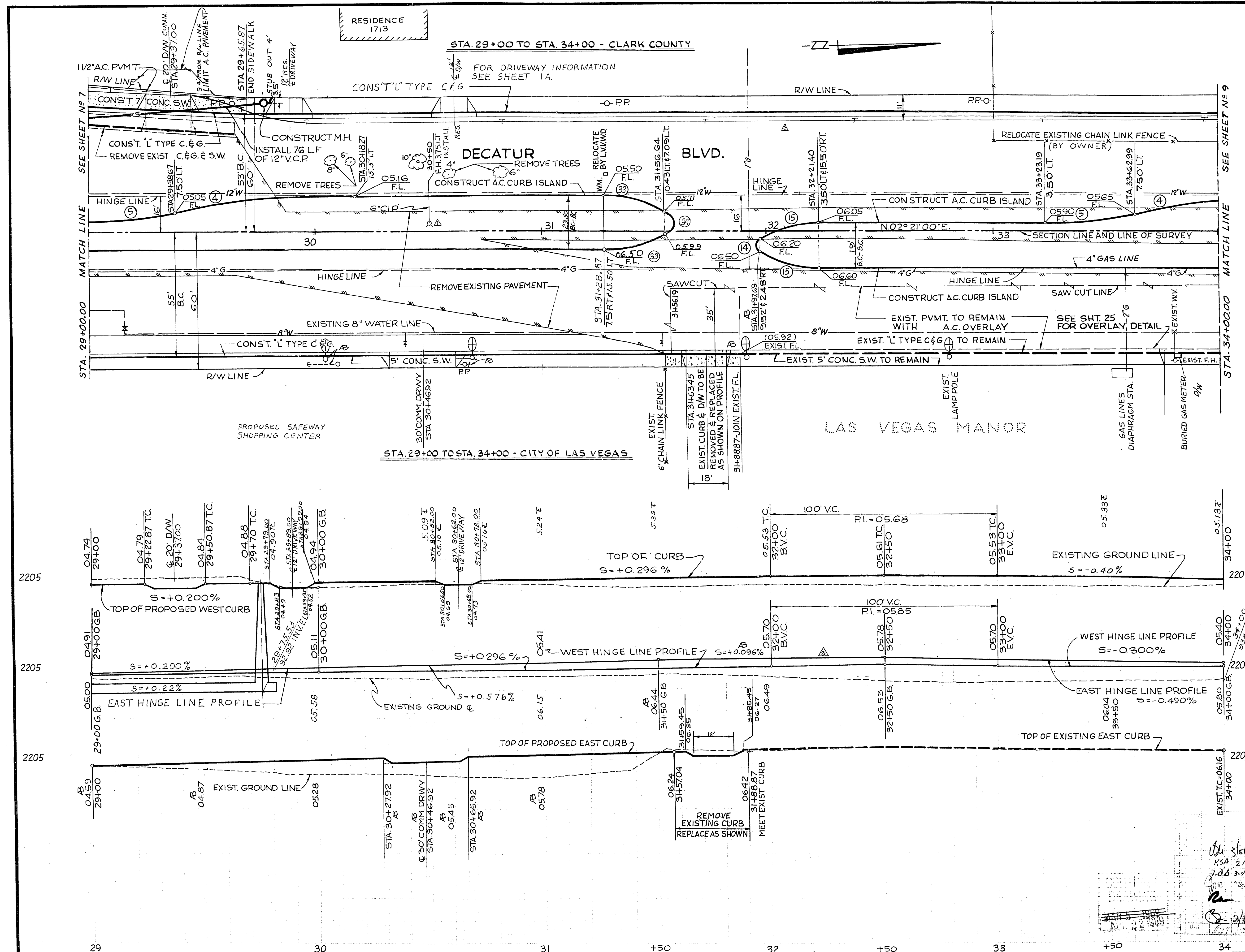


11-4-55



ITEM	DESCRIPTION	RSH.	CLV. S&D.	CLV.	CC. S&D.	TOTAL	UNIT
123.21B	12" V.C.P.					80	L.F.
200.110	REMOVE EXIST. CURB/GUTTER	99				99	L.F.
200.110	REMOVE SIDEWALK	495				495	L.F.
200.110	REMOVE TREES (4" - 10")	5				5	EACH
201.100	EXCAVATION	451			110	605	C.Y.
201.100	SAWCUT A.C. PAVEMENT	319				319	L.F.
202.200	TYPE I GRAVEL BASE	448			70	568	C.Y.
202.200	TYPE I GRAVEL BASE	450			42	550	C.Y.
220.100	BIT. PENETRATION	1033				1033	S.Y.
333.500	1/2" OPEN GRADE PLANT MIX	423			366	4878	S.Y.
334.200	A.C. OVERLAY	99				99	S.Y.
334.210	A.C. CURB (ISLAND)	345				345	L.F.
334.212	A.C. PAVEMENT	3477				3477	S.Y.
340.150	4" CONE SIDEWALK	70				70	S.F.
340.300	4" CONE SIDEWALK	350				350	S.F.
340.410	RESIDENTIAL DRIVEWAY	350				350	S.F.
340.420	COMMERCIAL DRIVEWAY	180				180	S.F.
512.100	MANHOLE				2/16	2/16	EACH
560.500	INSTALL FIRE HYDRANT						EACH
N.I.C.	RELOCATE WATER METER						EACH
554.500	1/2" A.C. PAVEMENT	31				31	S.Y.
555.100	BIT. TDS SEAL	31				31	S.Y.

CURVE	DELTA	RADIUS	LENGTH	TANGENT
④	11° 28' 42"	400.00	80.13'	40.20'
⑤	11° 28' 42"	200.00	40.07'	20.10'
⑥	123° 23' 22"	4.00'	8.61'	7.43'
⑦	28° 18' 19"	50.00	24.70'	12.61'
⑧	33° 44' 41"	50.00	29.45'	15.16'
⑨	112° 30' 38"	4.00	7.85'	5.99'

1	3-27-61	DELETE 6" GATE VALVE AT 30+50
2	3-27-61	MOVED F.H. TO CENTER OF ISLAND
3	3-27-61	ADDED TELEPHONE CONDUIT
4	7-31-63	REVISED GRADE ON EAST HINGE LINE

REV. DATE DESCRIPTION APP.

Bob Hilde

CITY OF LAS VEGAS, NEVADA
ENGINEERING DEPARTMENT

DECATUR BLVD.
WASHINGTON AVE. TO U.S. HIGHWAY N°95
STA. 29+00.00 TO ST. 34+00.00

W.D. 7.5 TO F 4810	DATE	HORIZONTAL SCALE
DESIGN	G.E.C.	1" = 20'
DRAWN	HURTADO	12-5-66
CHECKED	5-17-68	VERTICAL SCALE
CONSULTING ENG.	5-17-68	1" = 5'
TRAFFIC ENG.		F.B. #
CITY ENGINEER	3/5/69	

CLV. DRWG. N°
107V-738

PREPARED BY
TYSON ENGINEERING COMPANY INC.

SHEET 8 OF 42

"AS CONSTRUCTED"

107-V738