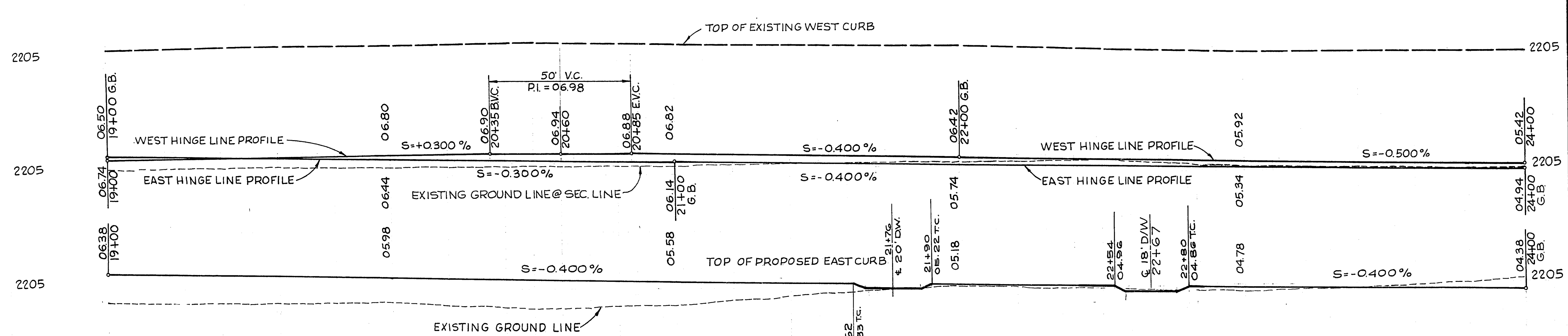
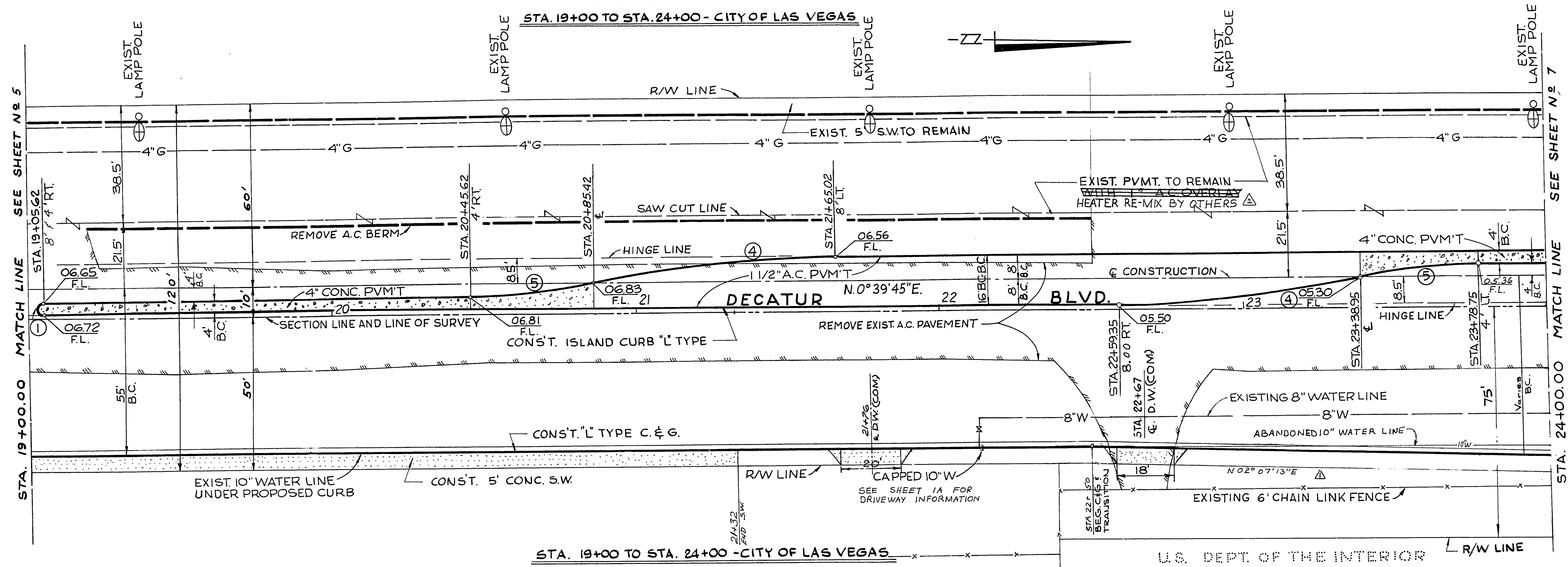


11-4-53



ITEM	DESCRIPTION	R.S.H.	CLV S.A.D.	CLV.	TOTAL	
					UNIT	CLV.
201.100	EXCAVATION	168.4		69	1753	C.Y.
201.100	REMOVE EXIST. AC PAVEMENT	500			500	L.F.
302.100	TYPE I GRAVEL BASE	4.4		37	69.4	C.Y.
302.200	TYPE II GRAVEL BASE	4.4			4.4	C.Y.
303.100	BLT. FOG SEAL	4.0			4.0	S.Y.
303.500	1/2" OPEN GRADE PLANT MIX	5.2			5.2	S.Y.
304.200	1" A.C. OVERLAY	4.4			4.4	S.Y.
304.210	1" A.C. PAVEMENT	4.4			4.4	S.Y.
304.300	1 1/2" A.C. ISLAND PAVEMENT	4.0			4.0	S.Y.
340.190	1/2" A.C. CURB & GUTTER	4.0			4.0	L.F.
340.200	1/2" A.C. CURB & GUTTER	9.6			9.6	L.F.
340.300	4" CONC. SIDEWALK	10.75		11.00	10.0	S.F.
340.311	4" CONC. ISLAND PAVEMENT	10.75			10.75	S.F.
340.420	COMMERCIAL DRIVEWAY	10.75		2.66	2.66	S.F.
340.312	ISLAND CONC. COLOR	10.75			10.75	L.F.

CURVE	DELTA	RADIUS	LENGTH	TANGENT
①	180°00'00"	2.00'	6.28'	∞
②	11°28'42"	400.00'	80.13'	40.20'
③	11°28'42"	200.00'	40.07'	20.10'

REV	DATE	DESCRIPTION	APP.
4-3-49		MOVE SIDEWALK, C&G FROM 22+50 TO 22+07'13"E TO 25+86.34	
4-3-49		Heater re-mix by others replaces 1" AC overlay on remain pvm't.	
4-16-69		Delete sidewalk (portion) east side from 21+32	

CITY OF LAS VEGAS, NEVADA  
ENGINEERING DEPARTMENT

**DECATUR BLVD.**  
WASHINGTON AVE. TO U.S. HIGHWAY N<sup>o</sup> 95  
STA. 19+00.00 TO STA. 24+00.00

DESIGN	G.E.C.	DATE	HORIZONTAL SCALE
DRAWN	HURTADO	12-3-66	1" = 20'
CHECKED	S.C.D.		VERTICAL SCALE
CONSULTING ENG.	PERZBERG	5-17-68	1" = 5'
TRAFFIC ENG.			F.B. N <sup>o</sup>
CITY ENGINEER			

C.L.V. DRWG. NO. 107V-738  
PREPARED BY TYSON ENGINEERING COMPANY INC. SHEET 6 OF 42

APP'D	DATE	DATE
7	3/14/67	
1	2/22/67	
2	2/22/67	
3	2/22/67	
4	2/22/67	
5	2/22/67	
6	2/22/67	
7	2/22/67	
8	2/22/67	
9	2/22/67	

AS CONS

107-7738