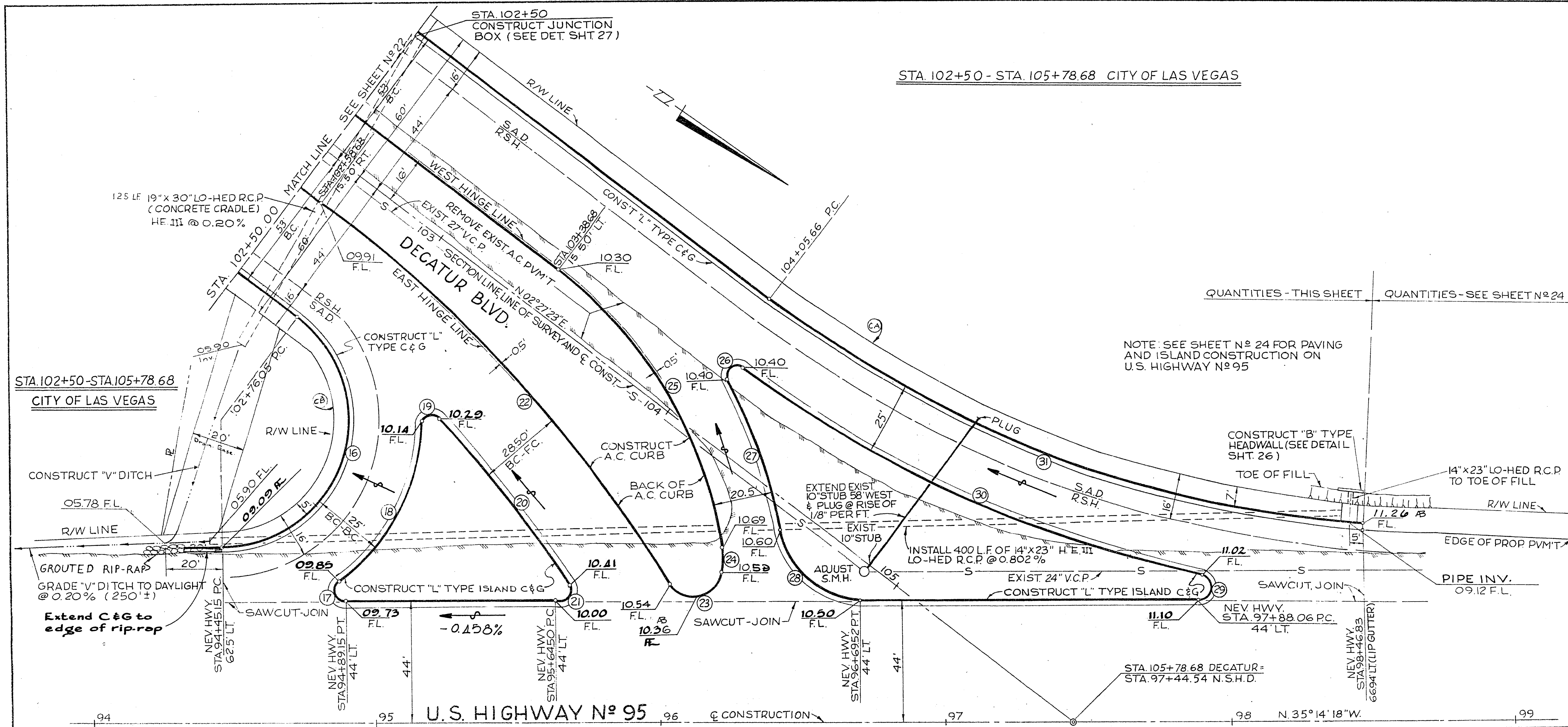


11-4-41



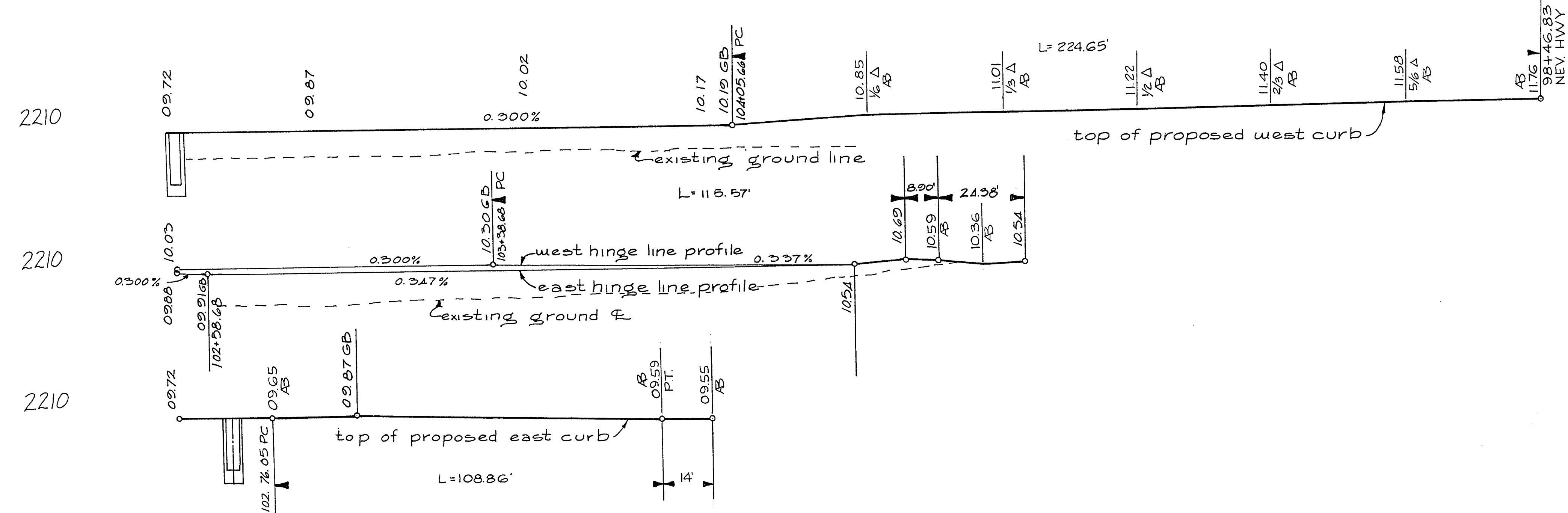
STA. 102+50 - STA. 105+78.68 CITY OF LAS VEGAS

QUANTITIES - THIS SHEET QUANTITIES - SEE SHEET NO. 24

NOTE: SEE SHEET NO. 24 FOR PAVING AND ISLAND CONSTRUCTION ON U.S. HIGHWAY NO. 95

ITEM	DESCRIPTION	RSH	CLV SAD	CLV	TOTAL	UNIT
121.51B	14" X 23" LO-HED RCP	40.4			40.4	L.F.
121.52A	19" X 30" LO-HED RCP	13.6			13.6	L.F.
123.210	10" V.C.P.	5.8		5.8	5.8	L.F.
201.100	SAWCUT A.C. PAVEMENT	4.34			4.34	L.F.
212.100	GROUTED RIP-RAP	80			80	CY
302.100	TYPE I GRAVEL BASE	2.44		8.9	11.34	CY
302.200	TYPE II GRAVEL BASE	3.34		4.6	7.94	CY
320.100	BIT PENETRATION	7.64			7.64	S.Y.
333.100	BIT FOG SEAL	9.10		4.16	13.26	S.Y.
333.500	1/2" OPEN GRADE PLANT	18.90			18.90	L.F.
334.212	A.C. CURB (ISLAND)	4.29		4.16	8.45	L.F.
334.300	1/2" A.C. PAVEMENT	18.80		4.16	22.96	S.Y.
340.200	18" TYPE CURB & GUTTER	9.10		5.15	14.25	L.F.
500.200	18" TYPE CURB & GUTTER	6.56			6.56	L.F.
500.300	CURB INLET	1			1	EACH
500.300	HEADWALL	1			1	EACH
500.300	BOOBIE JOINT	1			1	EACH
512.510	ADJUST MANHOLE	2-1			2-1	EACH

CURVE	DELTA	RADIUS	LENGTH	TANGENT
16	136°34'04"	45.00'	106.86'	119.09'
17	143°31'07"	400'	43.32'	84.07'
18	31°54'56"	70.00'	9.47'	9.80'
19	135°35'18"	4.00'	73.89'	37.02'
20	8°36'43"	171.50'	6.64'	7.50'
21	23°49'30"	4.00'	181.50'	91.76'
22	20°47'54"	1500.00'	24.38'	27.23'
23	18°59'52"	30.00'	6.90'	4.48'
24	16°59'26"	30.00'	15.57'	10.82'
25	44°08'38"	150.00'	10.82'	17.33'
26	18°15'56"	70.00'	42.05'	25.31'
27	60°18'21"	30.00'	11.73'	38.02'
28	60°18'21"	30.00'	17.73'	90.30'
29	17°59'15"	4.00'	220.53'	113.56'
30	25°01'12"	407.00'	105.86'	105.86'
31	33°41'41"	362.00'	113.56'	113.56'
CA	33°41'41"	375.00'	113.56'	113.56'
CB	138°36'04"	40.00'	96.76'	105.86'



CITY OF LAS VEGAS NEVADA
 DEPARTMENT OF PUBLIC WORKS
 SERVICES DIVISION

Decatur Blvd.
 Washington Ave. to U.S. Hwy. 95
 Sts. 102+50.00 to 105+78.68

W.O. NO. 7570 E.B.K. NO. DATE DRAWING NO.
 SC. (H) 7"=20' SC. (V) 1"=5' 21 Aug 69 FS-6

DES. *William* DR. *William* FILE NO. 107 V 738

APPROVED BY DIRECTOR OF PUBLIC WORKS
[Signature]

SHEET 1 OF 1

C.P. BRECHLER 8/21/69
 RSH managing engineer

"AS CONSTRUCTED"