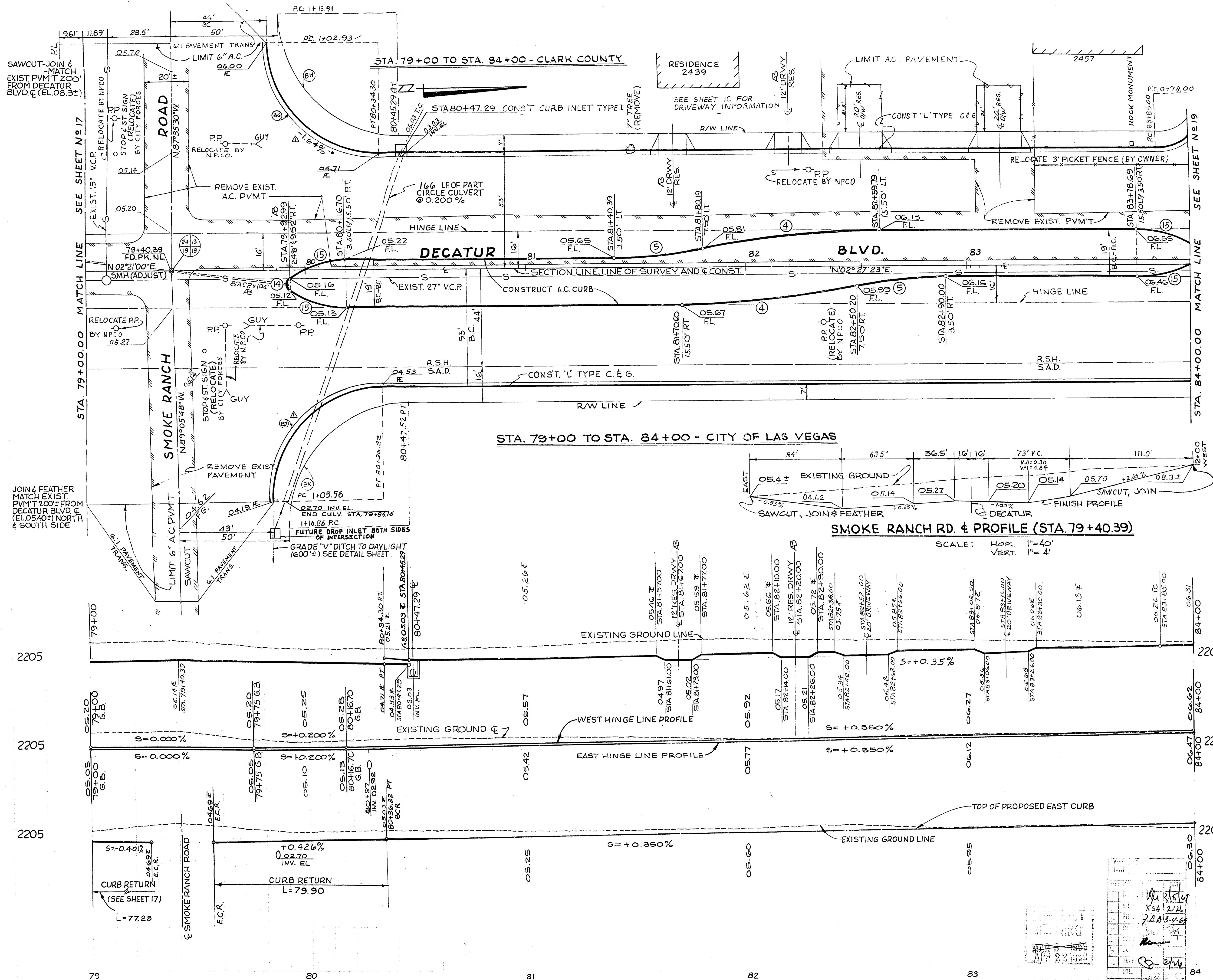


11-4-67



ITEM	DESCRIPTION	R.S.H.	CLV S.A.D.	CLV	C.C. S.A.D.	TOTAL	UNIT
122-216	PART CIRCLE CULVERT	179.166'				179.166'	L.F.
200-300	REMOVE TREES (1" D)					1	EACH
201-100	EXCAVATION	4045	225		4415	13.6	L.F.
201-100	SAW CUT A.C. PAVEMENT					9.6	CY
302-100	TYPE I GRAVEL BASE	79-678	66.65		59-58	9.89	S.Y.
320-100	TYPE II GRAVEL BASE	79-774	30		45	17.6	S.Y.
333-100	BIT. PENETRATION	989				597-032	S.Y.
333-100	BIT. FOG SEAL	1772				2.64	L.F.
334-210	1/2" OPEN GRADE PLANTING	54-32-224	274			15-24	S.Y.
334-212	A.C. CURB	834				4-4-543	S.Y.
334-300	1/2" A.C. PAVEMENT	5-43-224	274			2-29	S.F.
334-500	1/2" A.C. PAVEMENT	4-4-8-47	45-6-452			5-76	EACH
340-190	24" TYPE CURB GUTTER	94				1	EACH
340-200	18" TYPE CURB GUTTER	889				2	EACH
340-311	4" ISLAND CONCRETE					7	EACH
340-410	RES. DRIVEWAY						EACH
500-200	CURB INLET						EACH
52-510	ADJUST MANHOLE						EACH
N.I.C.	RELOCATE SIGN						EACH
N.I.C.	RELOCATE POWER POLE						EACH

CURVE	DELTA	RADIUS	LENGTH	TANGENT
①	11° 28' 42"	400.00'	80.13'	40.20'
②	11° 28' 42"	200.00'	40.07'	20.10'
③	123° 23' 22"	4.00'	8.61'	7.43'
④	28° 18' 19"	50.00'	24.70'	12.61'
⑤	89° 57' 07"	50.00'	78.50'	49.96'
⑥	89° 57' 07"	55.00'	86.35'	54.95'
⑦	91° 33' 11"	50.00'	79.90'	51.37'
⑧	91° 33' 11"	55.00'	87.88'	56.51'
⑨	33° 22' 14"	2.00'	4.86'	5.40'
⑩	89° 57' 07"	2.00'	3.14'	2.06'
⑪	33° 22' 12"	2.00'	4.86'	5.40'
⑫	8° 40' 48"	83.00'	12.57'	6.30'
⑬	33° 22' 12"	2.00'	4.86'	5.40'
⑭	91° 33' 11"	2.00'	3.20'	2.05'
⑮	33° 22' 12"	2.00'	4.86'	5.40'
⑯	89° 57' 07"	83.00'	14.89'	7.47'

REV. DATE DESCRIPTION APPR.

CITY OF LAS VEGAS, NEVADA
ENGINEERING DEPARTMENT

DECATUR BLVD.
WASHINGTON AVE TO U.S. HIGHWAY #95
STA. 79+00.00 TO STA. 84+00.00

W.D. 7570 # 4810	DATE	HORIZONTAL SCALE
DESIGN G.E.C.	11-22-66	1" = 20'
DRAWN HURTADO		VERTICAL SCALE
CHECKED S.C.D.	5-7-68	1" = 5'
CONSULTING ENG. <i>(Signature)</i>		F.B. N#
TRAFFIC ENG. <i>(Signature)</i>		
CITY ENGINEER	3/5/49	CL.V. DRWG. N#
		107V-738

PREPARED BY TYSON ENGINEERING COMPANY INC. SHEET 18 OF 42

107-4738