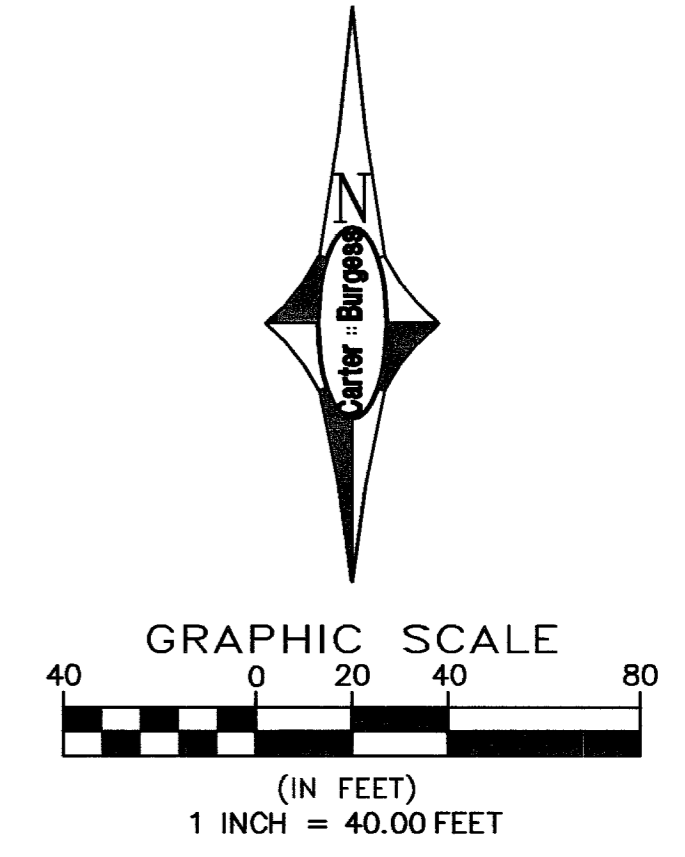
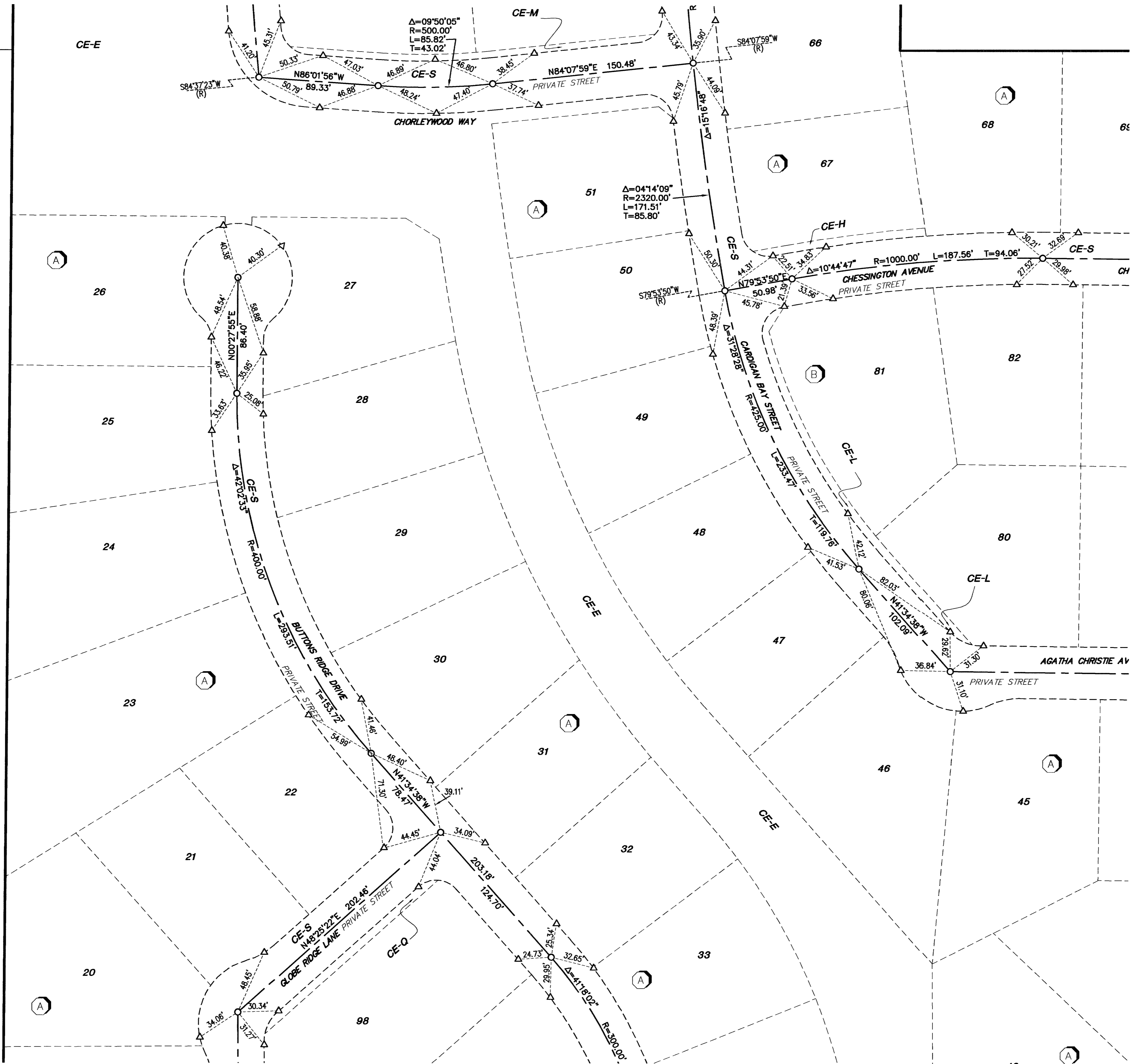


MONUMENT TIE MAP ELKHORN / JONES

IN BOOK 114 PAGE 14 OF PLATS, IN THE CLARK COUNTY RECORDER'S OFFICE, CLARK COUNTY, NEVADA. LYING WITHIN THE EAST HALF (E 1/2) OF THE SOUTHEAST QUARTER (SE 1/4) OF SECTION 14, TOWNSHIP 19 SOUTH, RANGE 60 EAST, M.D.M., CITY OF LAS VEGAS, CLARK COUNTY, NEVADA

SEE SHEET 1 FOR CONTINUATION



SEE SHEET 3 FOR CONTINUATION

LEGEND

- SUBDIVISION BOUNDARY LINE
- RIGHT-OF-WAY LINE
- SECTION LINE
- STREET CENTERLINE
- LOT LINE
- 17 LOT NUMBER
- TYPE III MONUMENTS SET PER BOOK 114, PAGE 14 OF PLATS STAMPED PLS 8352
- △ TYPE IV MONUMENTS SET PER BOOK 114, PAGE 14 OF PLATS STAMPED PLS 8352
- ⊙ TYPE I MONUMENT SET PER BOOK 114, PAGE 14 OF PLATS STAMPED PLS 8352
- FOUND MONUMENT AS DESCRIBED

SEE SHEET 5 FOR CONTINUATION

92611

Carter :: Burgess		6655 Bermuda Road Las Vegas, Nevada 89119 (702) 938-5400 (702) 938-5454	
Consultants in Planning, Engineering, Construction Management, and Related Services		OSB-4783	
SCALE: 1" = 40'	JOB NO.: 240567	SHEET	OF
DRAWING FILE: 567_MON	DRN. BY: EO/JF	2	5
DATE: 09-22-2004	CKD. BY:		