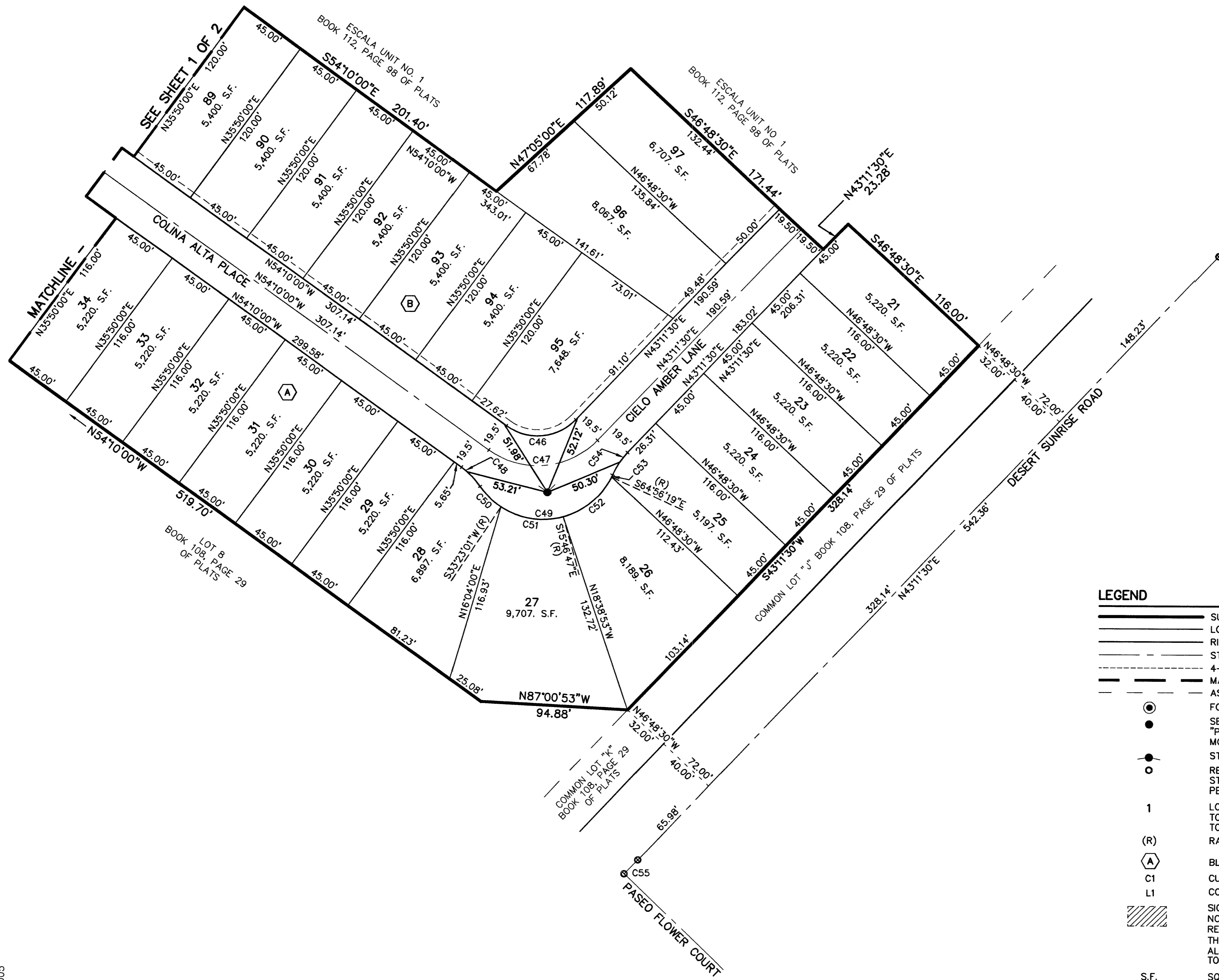
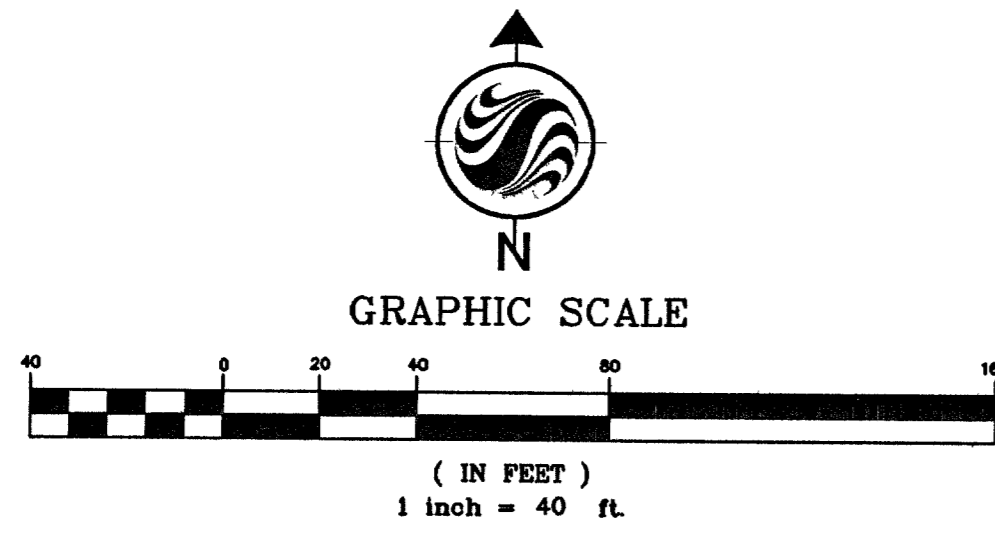


MONUMENT TIE MAP OF ESCALA UNIT NO. 2

A COMMON INTEREST COMMUNITY
 BEING A SUBDIVISION OF A PORTION OF LOT 7, BLOCK B OF "SUMMERLIN VILLAGE 23A UNIT NO. 1" AS SHOWN IN BOOK 108, PAGE 29 OF PLATS, SITUATE IN SECTION 34, TOWNSHIP 20 SOUTH, RANGE 59 EAST, M.D.M., CITY OF LAS VEGAS, CLARK COUNTY, NEVADA



LINE	BEARING	LENGTH
L1	N19°03'14"E	27.13'
L2	N60°29'35"E	50.08'
L3	N38°05'00"W	109.68'
L4	N38°05'00"W	63.77'
L5	N38°05'00"W	75.69'
L6	N44°15'08"E	10.46'
L7	N60°29'35"E	6.22'
L10	N13°48'31"W	46.00'
L11	N44°17'37"W	46.00'
L12	N60°29'35"E	23.29'
L13	N20°46'18"E	53.76'
L14	N38°05'00"W	11.50'
L15	N38°05'00"W	22.48'
L16	N78°58'00"W	54.31'
L17	N54°10'00"W	299.58'
L18	N54°10'00"W	307.14'

CURVE	DELTA	RADIUS	LENGTH	TANGENT
C1	0°43'04"	812.00'	10.17'	5.09'
C2	30°29'06"	696.00'	370.32'	189.65'
C3	0°07'09"	696.00'	1.45'	0.72'
C4	3°48'48"	696.00'	46.32'	23.17'
C5	3°45'40"	696.00'	45.69'	22.85'
C6	4°20'46"	696.00'	52.79'	26.41'
C7	3°42'16"	696.00'	45.00'	22.51'
C8	3°42'16"	696.00'	45.00'	22.51'
C9	3°42'16"	696.00'	45.00'	22.51'
C10	3°42'18"	696.00'	45.01'	22.51'
C11	3°37'38"	696.00'	44.06'	22.04'
C12	14°47'12"	812.00'	209.56'	105.36'
C13	0°02'44"	812.00'	0.64'	0.32'
C14	3°42'16"	812.00'	52.50'	26.26'
C15	3°56'02"	812.00'	55.75'	27.89'
C16	3°28'33"	812.00'	49.26'	24.64'
C17	3°37'38"	812.00'	51.40'	25.71'
C18	14°04'08"	831.50'	204.17'	102.60'
C19	14°04'08"	851.00'	208.96'	105.01'
C20	3°22'03"	851.00'	50.02'	25.01'
C21	3°42'56"	851.00'	55.18'	27.60'
C22	3°44'34"	851.00'	55.59'	27.81'
C23	3°14'35"	851.00'	48.17'	24.09'
C24	98°34'35"	20.00'	34.41'	23.24'
C25	81°25'25"	20.00'	28.42'	17.21'
C26	49°20'05"	20.00'	17.22'	9.19'
C27	17°02'36"	20.00'	5.95'	3.00'
C28	32°17'29"	20.00'	11.27'	5.79'
C29	278°28'47"	40.50'	196.85'	34.91'
C30	56°23'05"	40.50'	39.86'	21.71'
C31	99°11'27"	40.50'	70.11'	47.58'
C32	122°54'15"	40.50'	86.88'	74.44'
C33	49°08'42"	20.00'	17.15'	9.15'
C34	16°05'00"	729.52'	204.78'	103.07'
C35	3°49'08"	729.52'	48.63'	24.32'
C36	3°32'03"	729.52'	45.00'	22.51'
C37	3°32'03"	729.52'	45.00'	22.51'
C38	3°32'28"	729.52'	45.09'	22.55'
C39	1°39'18"	729.52'	21.07'	10.54'
C40	16°05'00"	710.02'	199.31'	100.31'
C41	16°05'00"	690.52'	193.83'	97.56'
C42	3°27'43"	690.52'	41.72'	20.87'
C43	4°35'55"	690.52'	55.42'	27.73'
C44	4°29'58"	690.52'	54.23'	27.13'
C45	3°31'25"	690.52'	42.46'	21.24'
C46	82°38'30"	34.00'	49.04'	29.89'
C47	82°38'30"	53.50'	77.17'	47.04'
C48	20°03'00"	50.00'	17.50'	8.84'
C49	122°44'30"	49.00'	104.97'	89.76'
C50	22°29'59"	49.00'	19.24'	9.75'
C51	49°09'48"	49.00'	42.04'	22.41'
C52	49°09'32"	49.00'	42.04'	22.41'
C53	1°55'11"	49.00'	1.64'	0.82'
C54	20°03'00"	50.00'	17.50'	8.84'
C55	0°43'01"	1020.00'	12.76'	6.38'
C56	86°52'27"	650.00'	985.56'	615.47'
C57	56°23'21"	650.00'	639.71'	348.45'
C58	30°29'06"	650.00'	345.84'	177.12'
C59	36°35'18"	20.00'	12.77'	6.61'
C60	14°04'08"	812.00'	199.38'	100.20'

- LEGEND**
- SUBDIVISION BOUNDARY LINE
 - LOT LINE
 - RIGHT-OF-WAY LINE
 - STREET CENTERLINE
 - 4-FOOT WIDE PEDESTRIAN ACCESS EASEMENT
 - - - MATCHLINE
 - ASSESSOR'S PARCEL LINE
 - FOUND MONUMENT AS DESCRIBED
 - SET REBAR AND ALUMINUM CAP STAMPED "PLS 14420" WITH TYPE IV-A REFERENCE MONUMENTS
 - STREET CENTERLINE POINT OF INTERSECTION
 - REBAR AND ALUMINUM CAP STAMPED "PLS 11441" TO BE SET PER BOOK 108, PAGE 29 OF PLATS
 - 1 LOT NUMBER
 - (R) TOTAL RESIDENTIAL LOTS IN SUBDIVISION = 46
 - (R) TOTAL COMMON LOTS = 1
 - (R) RADIAL BEARING
 - (A) BLOCK NUMBER
 - C1 CURVE NUMBER
 - L1 COURSE NUMBER
 - ▨ SIGHT VISIBILITY RESTRICTION ZONE
 - ▨ NO LANDSCAPING OR SIGHT RESTRICTING IMPROVEMENTS TALLER THAN 24 INCHES (ABOVE TOP OF CURB) ALLOWED WITHIN THE AREAS SHADED TO BE PRIVATELY MAINTAINED
 - S.F. SQUARE FEET

15 FEBRUARY 2005
 JOB# 80947090

81564

PD/SLD
 058-4702 SHEET 2 OF 2