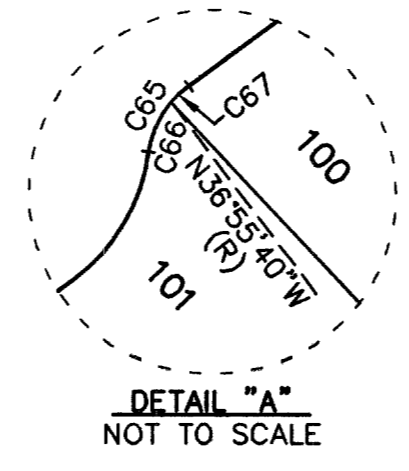
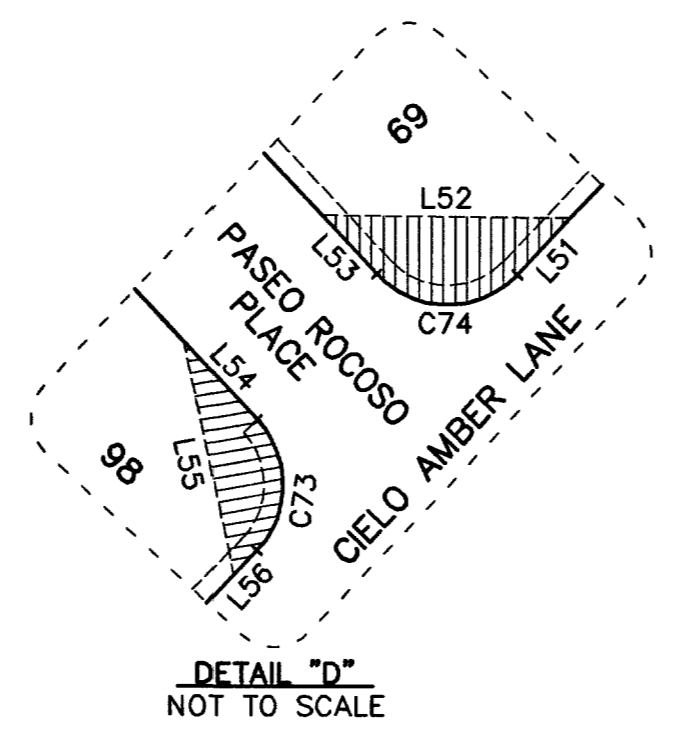
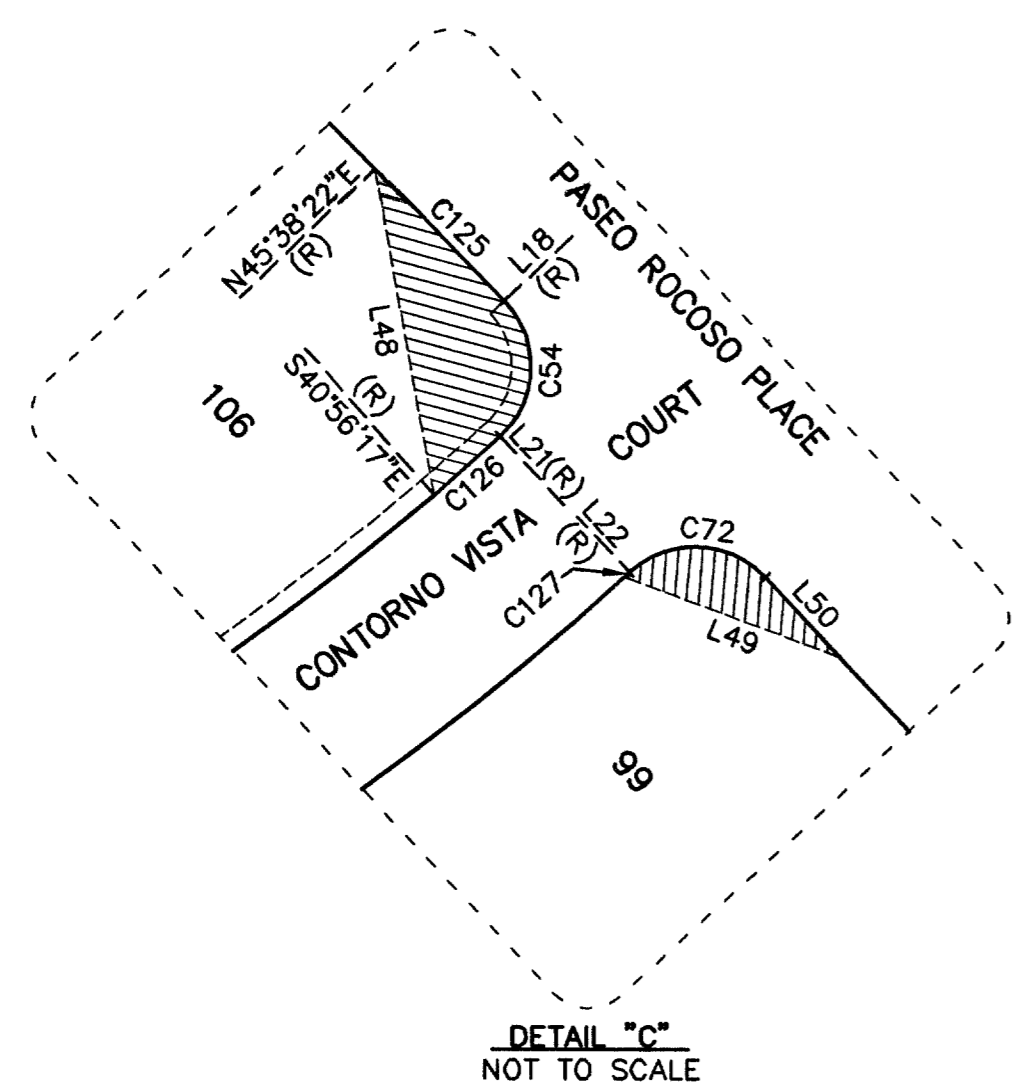
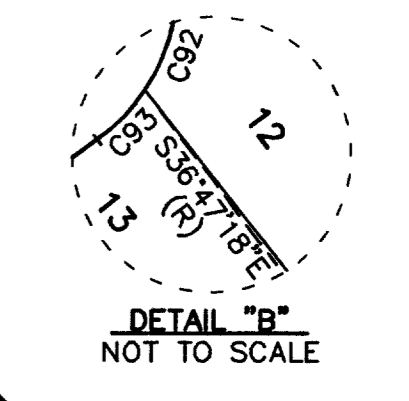
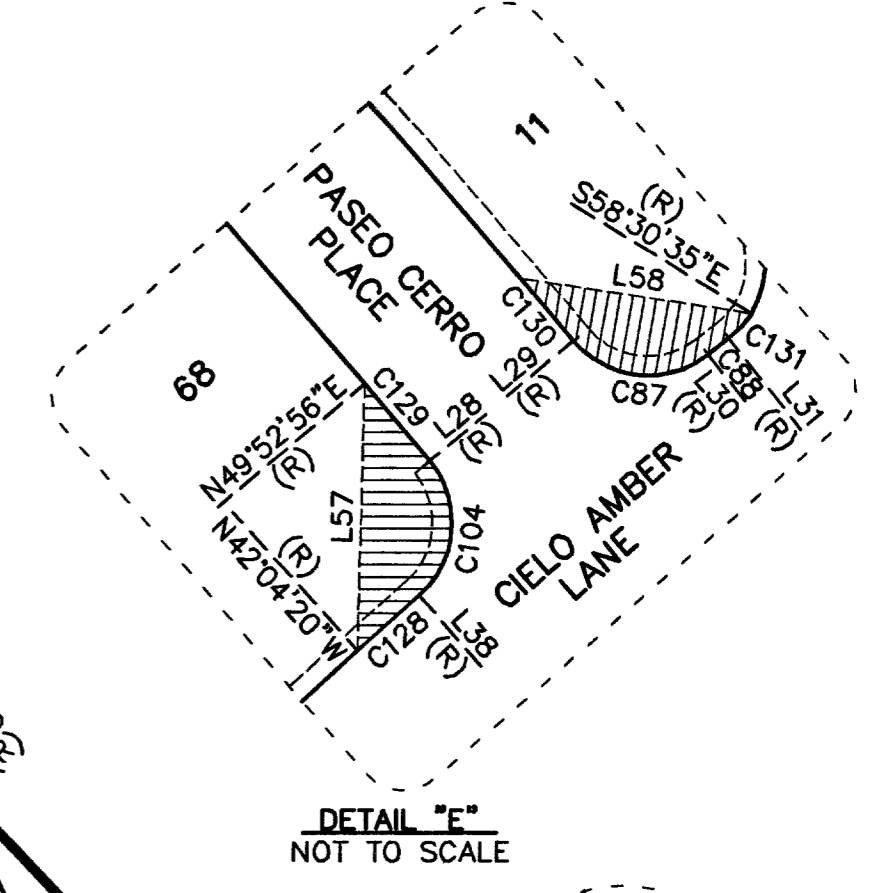
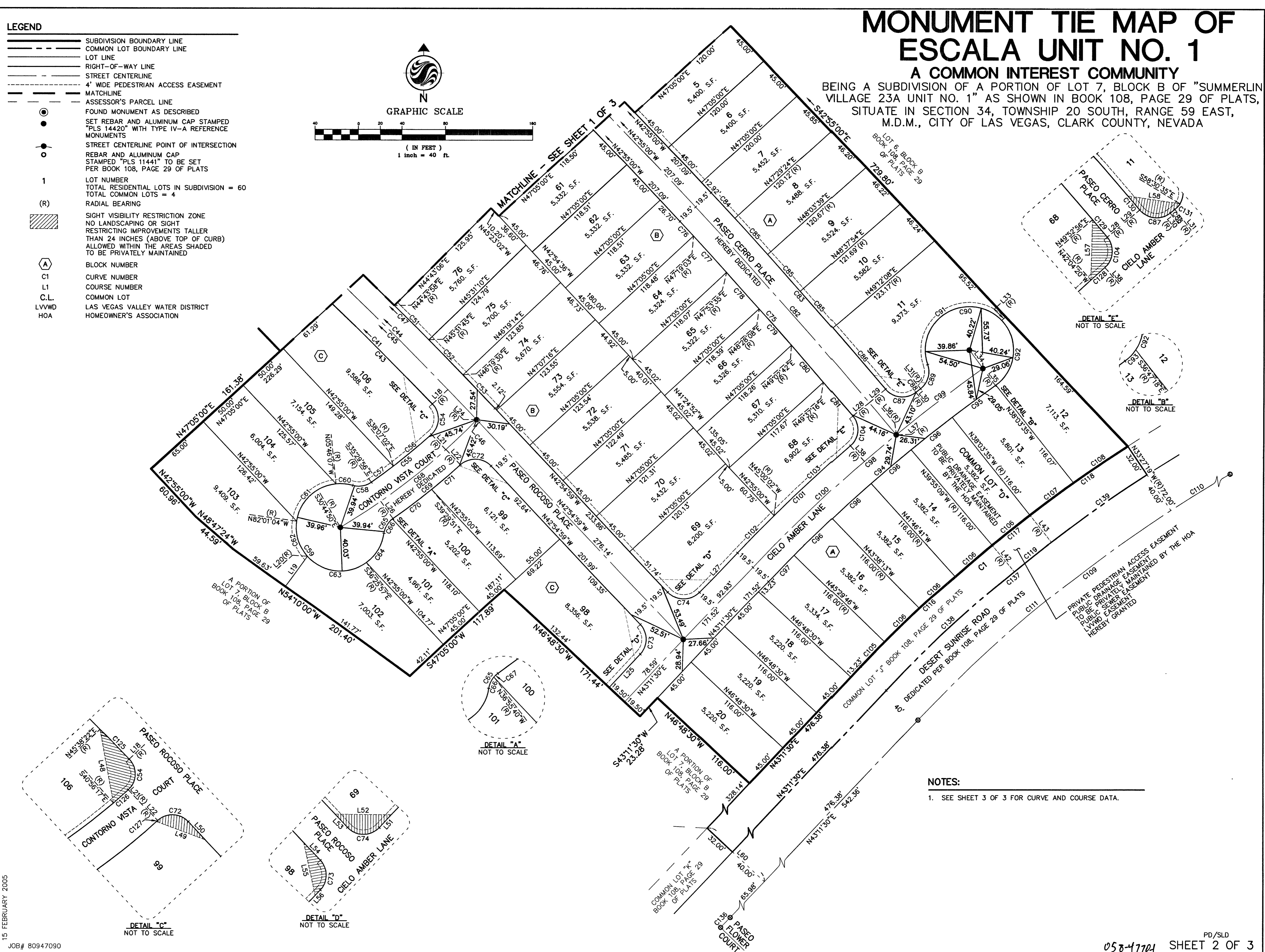
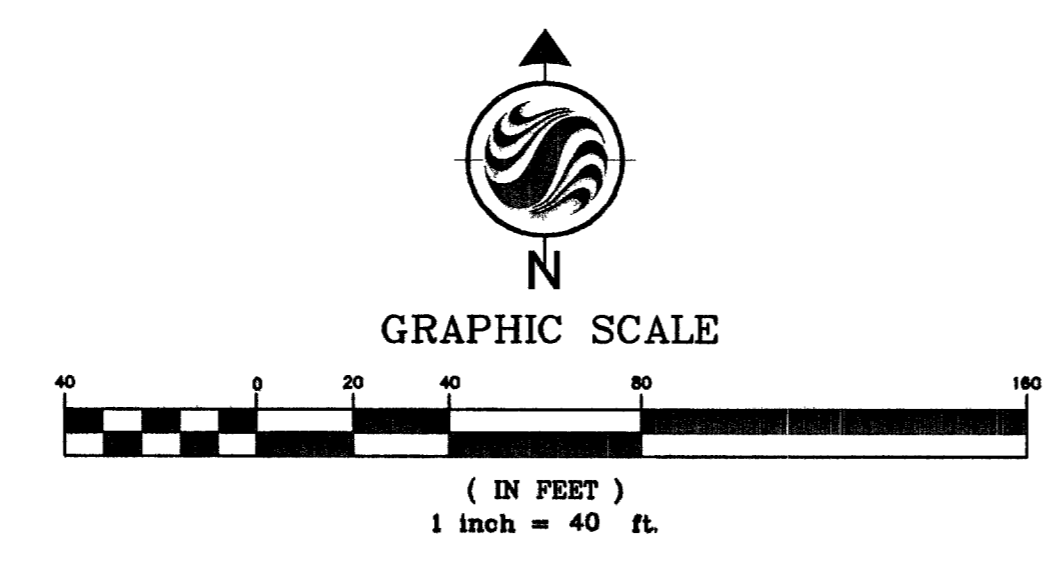


# MONUMENT TIE MAP OF ESCALA UNIT NO. 1

A COMMON INTEREST COMMUNITY  
 BEING A SUBDIVISION OF A PORTION OF LOT 7, BLOCK B OF "SUMMERLIN VILLAGE 23A UNIT NO. 1" AS SHOWN IN BOOK 108, PAGE 29 OF PLATS, SITUATE IN SECTION 34, TOWNSHIP 20 SOUTH, RANGE 59 EAST, M.D.M., CITY OF LAS VEGAS, CLARK COUNTY, NEVADA

- LEGEND**
- SUBDIVISION BOUNDARY LINE
  - COMMON LOT BOUNDARY LINE
  - LOT LINE
  - RIGHT-OF-WAY LINE
  - STREET CENTERLINE
  - 4' WIDE PEDESTRIAN ACCESS EASEMENT
  - MATCHLINE
  - ASSESSOR'S PARCEL LINE
  - FOUND MONUMENT AS DESCRIBED
  - SET REBAR AND ALUMINUM CAP STAMPED "PLS 14420" WITH TYPE IV-A REFERENCE MONUMENTS
  - STREET CENTERLINE POINT OF INTERSECTION
  - REBAR AND ALUMINUM CAP STAMPED "PLS 11441" TO BE SET PER BOOK 108, PAGE 29 OF PLATS
  - 1 LOT NUMBER
  - (R) TOTAL RESIDENTIAL LOTS IN SUBDIVISION = 60  
TOTAL COMMON LOTS = 4
  - (R) RADIAL BEARING
  - ▨ SIGHT VISIBILITY RESTRICTION ZONE  
NO LANDSCAPING OR SIGHT RESTRICTING IMPROVEMENTS TALLER THAN 24 INCHES (ABOVE TOP OF CURB) ALLOWED WITHIN THE AREAS SHADED TO BE PRIVATELY MAINTAINED
  - (A) BLOCK NUMBER
  - C1 CURVE NUMBER
  - L1 COURSE NUMBER
  - C.L. COMMON LOT
  - L.V.V.W.D. LAS VEGAS VALLEY WATER DISTRICT
  - HOA HOMEOWNER'S ASSOCIATION



**NOTES:**  
 1. SEE SHEET 3 OF 3 FOR CURVE AND COURSE DATA.

15 FEBRUARY 2005  
 JOB# 80947090

81561

PD/SLD  
 058-47704 SHEET 2 OF 3