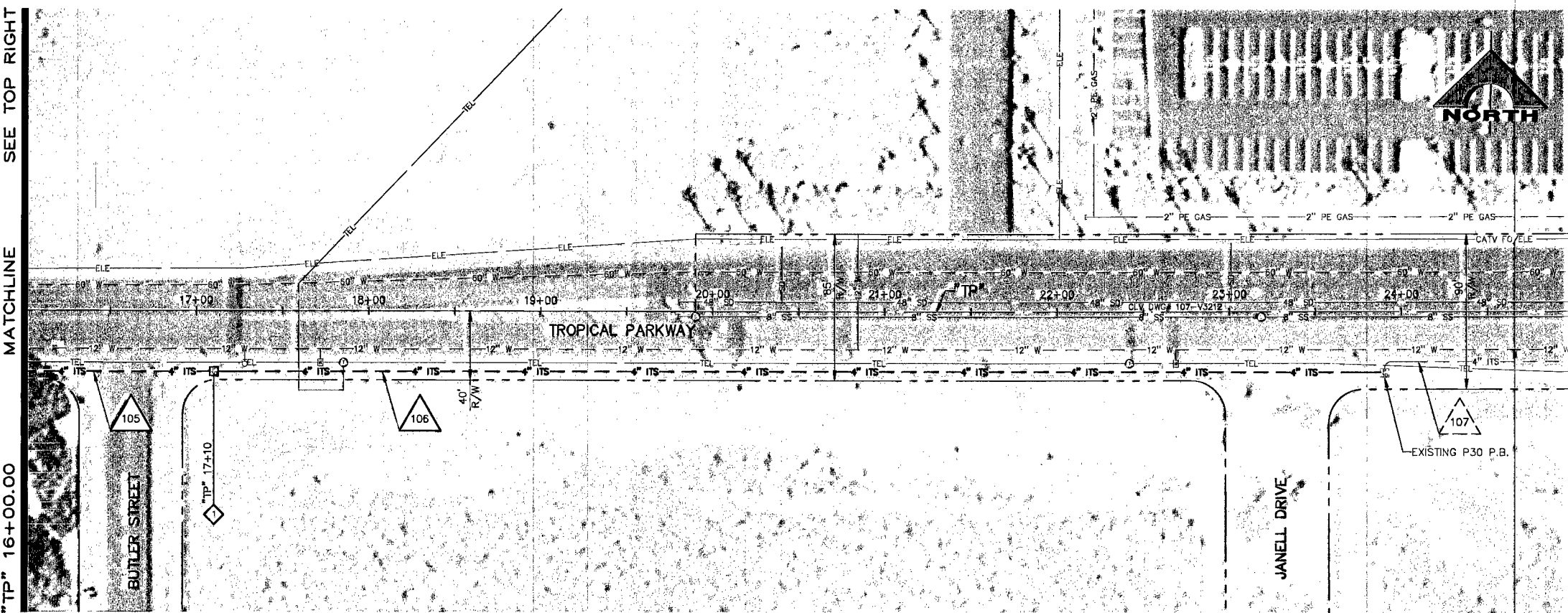


SEE BOTTOM LEFT
MATCHLINE
"TP" 16+00.00

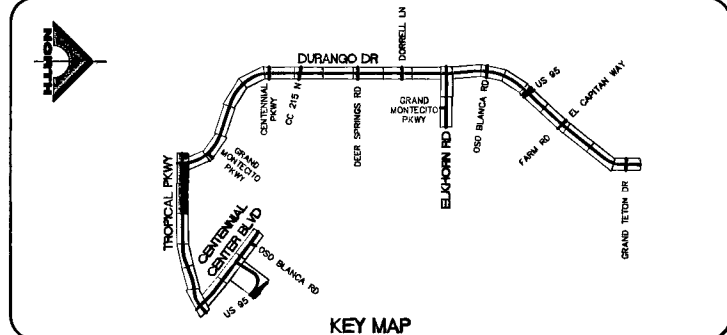
- CONSTRUCTION NOTES**
1. INSTALL P30 PULL BOX (STD. DWG. NOS. 404.132, 404.142, & 404.143)
 2. INSTALL TYPE 200 SPLICE VAULT (STD. DWG. NOS. 404.133, 404.142, & 404.143)
 3. REMOVE EXISTING PULL BOX
 4. REMOVE EXISTING PULL BOX AND CONNECT EXISTING CONDUIT (SEE DETAIL A, DRAWING DU-18)
 5. INTERCEPT AND EXTEND EXISTING CONDUIT TO PULL BOX
 6. REMOVE EXISTING CCTV CAMERA AND INSTALL NEW WITH 10' EXTENSION ON POLE (STD. DWG. NO. 404.1500)
 7. INSTALL CCTV CAMERA AND EXTENSION ON POLE (STD. DWG. NO. 404.1500)
 8. PERFORM FIBER OPTIC SPLICE-TYPE 1 (SEE DRAWING DU-20 FOR SPLICE DIAGRAM)
 9. PERFORM FIBER OPTIC SPLICE-TYPE 2 (SEE DRAWING DU-20 FOR SPLICE DIAGRAM)
 10. PERFORM FIBER OPTIC SPLICE-TYPE 3 (SEE DRAWING DU-20 FOR SPLICE DIAGRAM)
 11. PERFORM FIBER OPTIC SPLICE-TYPE 4 (SEE DRAWING DU-20 FOR SPLICE DIAGRAM)
 12. PERFORM FIBER OPTIC SPLICE-TYPE 5 (SEE DRAWING DU-21 FOR SPLICE DIAGRAM)
 13. PERFORM FIBER OPTIC SPLICE-TYPE 6 (SEE DRAWING DU-21 FOR SPLICE DIAGRAM)
 14. PERFORM FIBER OPTIC SPLICE-TYPE 7 (SEE DRAWING DU-21 FOR SPLICE DIAGRAM)

- FIBER OPTICS NOTES**
1. SLACK SHALL BE PROVIDED IN EACH P30 P.B. (30 FT) AND TYPE 200 S.V. (120 FT) UNLESS OTHERWISE NOTED.
 2. PULL BOXES/SPLICE VAULTS SHALL NOT BE INSTALLED IN SIDEWALK RAMP OR DRIVEWAYS.
 3. 1-6 PR PE 39 #22 AWG INTERCONNECT CABLE SHALL BE INSTALLED IN NEW AND EXISTING CONDUIT AS SHOWN IN CONDUIT AND WIRE SCHEDULE.
 4. TRENCHING FOR NEW CONDUIT SHALL BE PER DETAILS ON DRAWING DU-19.
 5. CONDUIT ROUTING IS SCHEMATIC FOR THE PURPOSE OF CLARITY AND MAY DIFFER FROM ACTUAL INSTALLATION. FINAL LOCATION SHALL BE DETERMINED IN THE FIELD BY THE ENGINEER. SEE DETAIL B, DRAWING DU-18 FOR INTERSECTION PULL BOX INSTALLATION.
 6. ALL EXISTING ITS INFRASTRUCTURE SHALL BE MAINTAINED UNLESS OTHERWISE DIRECTED BY ENGINEER.
 7. PULL BOXES, SPLICE VAULTS, AND CONDUIT SHALL BE INSTALLED WITHIN RIGHT-OF-WAY OR EASEMENTS. CONTRACTOR SHALL VERIFY PRIOR TO INSTALLATION.
 8. LOCATIONS OF THE PROPOSED FIBER OPTIC SYSTEM PULL BOXES SHOWN ON THE PLANS ARE APPROXIMATE. THE CONTRACTOR SHALL BE RESPONSIBLE FOR MARKING THE LOCATIONS IN THE FIELD. THESE LOCATIONS SHALL BE SUBJECT TO APPROVAL BY THE ENGINEER BEFORE INSTALLATION.



MATCHLINE
SEE TOP RIGHT
"TP" 25+00.00

- GENERAL NOTES**
1. TWO (2) WEEKS PRIOR TO BEGINNING WORK, CONTRACTOR SHALL CALL CITY OF LAS VEGAS TRAFFIC ENGINEERING AT 229-6331 (NIEL ROHLER) FOR COORDINATION.
 2. THE UTILITY LOCATIONS SHOWN ON THIS PLAN ARE APPROXIMATE ONLY, AND ARE NOT RELIABLE FOR CONSTRUCTION PURPOSES. FOR ACTUAL FIELD LOCATIONS, CALL USA 1-800-227-2600.
 3. WHERE NEW CONDUIT CROSSES EXISTING WATERLINES, PROTECT WATERLINE IN PLACE. WHERE NEW CONDUIT IS PARALLEL TO EXISTING WATERLINES, MAINTAIN MINIMUM 3 FEET PARALLEL SEPARATION.
 4. PROTECT IN PLACE EXISTING STORM DRAIN AND SANITARY SEWER MAINS, LATERALS AND MANHOLES AND STORM DRAIN DROP INLETS DURING CONSTRUCTION.
 5. IF EXISTING SIDEWALK AND/OR CURB AND GUTTER IS DAMAGED DURING CONSTRUCTION, CONTRACTOR SHALL REPLACE TO NEAREST EXISTING CONSTRUCTION JOINT.



Call before you Dig
Avoid cutting underground utility lines. It's costly.

Call

811

OR

1-800-227-2600

FAST

Call before you UnderGround.

1-702-432-5300

AVOID HITTING OVERHEAD POWER LINES. IT'S COSTLY.

CALL BEFORE YOU DO OVERHEAD

1-702-227-2929

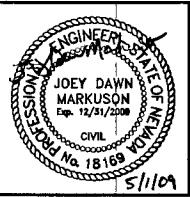
REV. NO.	DATE	DESCRIPTION	APPROVED

DURANGO DRIVE ITS INFRASTRUCTURE

FIBER OPTIC SYSTEM PLAN

"TP" 7+00.00 TO "TP" 25+00.00

REGIONAL TRANSPORTATION COMMISSION OF SOUTHERN NEVADA



PROJECT No: 398-A240-3 DRAWN BY: JAS
 DESIGNED BY: JDM CHECKED BY: JSR
 APPROVED BY: _____

G.C. WALLACE COMPANIES
 ENGINEERS | PLANNERS | SURVEYORS
 6655 S. CIMARRON ROAD - LAS VEGAS, NV 89113
 T: 702.804.2000 F: 702.804.2299 GCVALLACE.COM

SCALE: HORIZ: AS SHOWN VERT: NONE
 FIELD BOOK: H34022

PROJECT No: 4500094823-402-04
 DRAWING No: **DU-1**
 107V5212-F1B
 SHT. 4 OF 26

17021

DURANGO DRIVE ITS INFRASTRUCTURE