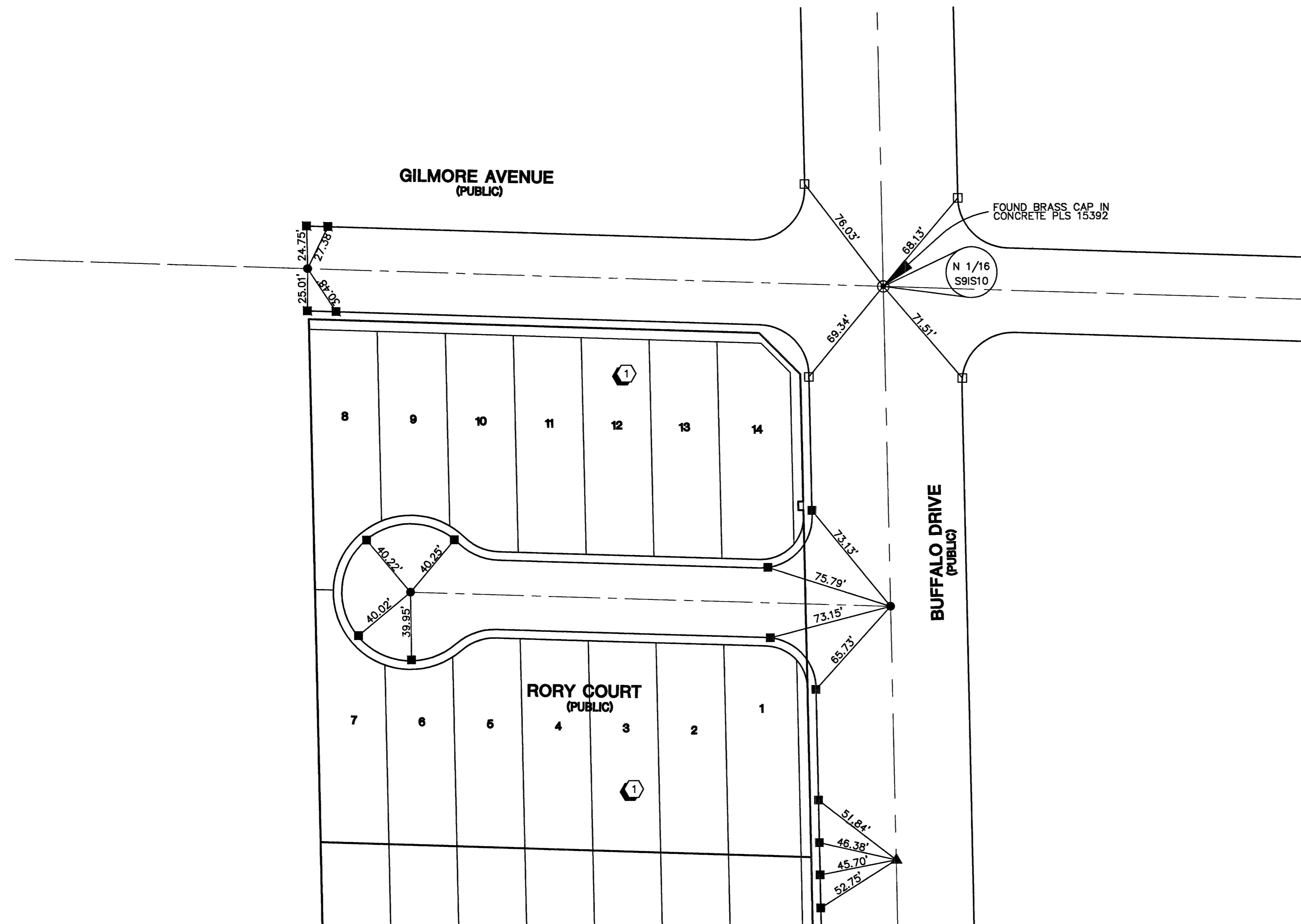


MONUMENTATION TIE MAP

DAY DAWN ESTATES - UNIT 4 (BOOK 116 PAGE 95)

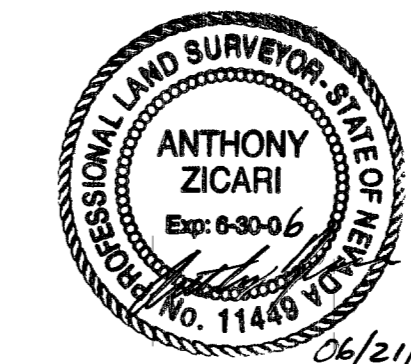
(A COMMON INTEREST COMMUNITY)

BEING A PORTION OF THE NORTHEAST QUARTER (NE 1/4) OF THE NORTHEAST QUARTER (NE 1/4) OF THE SOUTHEAST QUARTER (SE 1/4) OF THE NORTHEAST QUARTER (NE 1/4) OF SECTION 9, TOWNSHIP 20 SOUTH, RANGE 60 EAST, M.D.M., CITY OF LAS VEGAS, CLARK COUNTY, NEVADA



SURVEYOR'S CERTIFICATE

I, ANTHONY ZICARI, A PROFESSIONAL LAND SURVEYOR LICENSED IN THE STATE OF NEVADA, DO HEREBY CERTIFY THAT THE MONUMENTS HAVE BEEN SET AND THE TIE DISTANCES ESTABLISHED AS SHOWN HEREON. THIS SURVEY WAS COMPLETED ON JUNE 7, 2005.



ANTHONY ZICARI, P.L.S.
NEVADA LICENSE NO. 11449

LEGEND

- 1** LOT NUMBER
- BOUNDARY
- LOT LINES
- - - STREET CENTERLINE
- BACK OF CURB LINE
- ⊙ MONUMENTS AS DESCRIBED
- ▲ TYPE III MONUMENT - 5/8" REBAR AND AL. CAP "VTN PLS 11449" PER BOOK 116, PAGE 41 OF PLATS
- TYPE IV-A REFERENCE MONUMENTS "VTN PLS 11449" IN TOP OF CURB
- FOUND TYPE IV-A REFERENCE MONUMENTS "PLS 15392" IN TOP OF CURB
- TYPE III MONUMENT - 5/8" REBAR AND AL. CAP "VTN PLS 11449" PER BOOK 116, PAGE 95 OF PLATS

NOTES

SEE FINAL MAP FOR BEARINGS AND DISTANCES.
BOOK 116, PAGE 95

