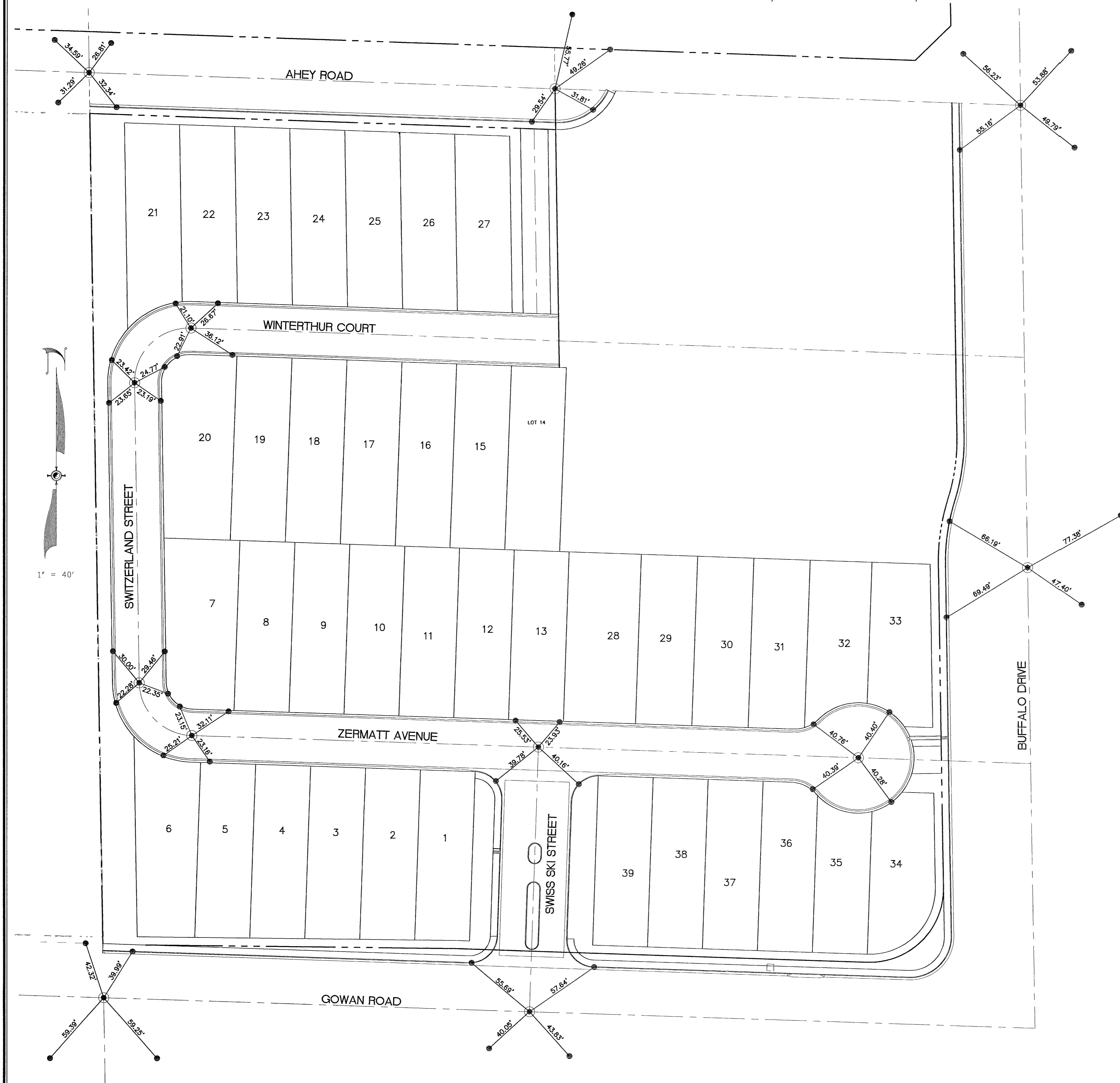
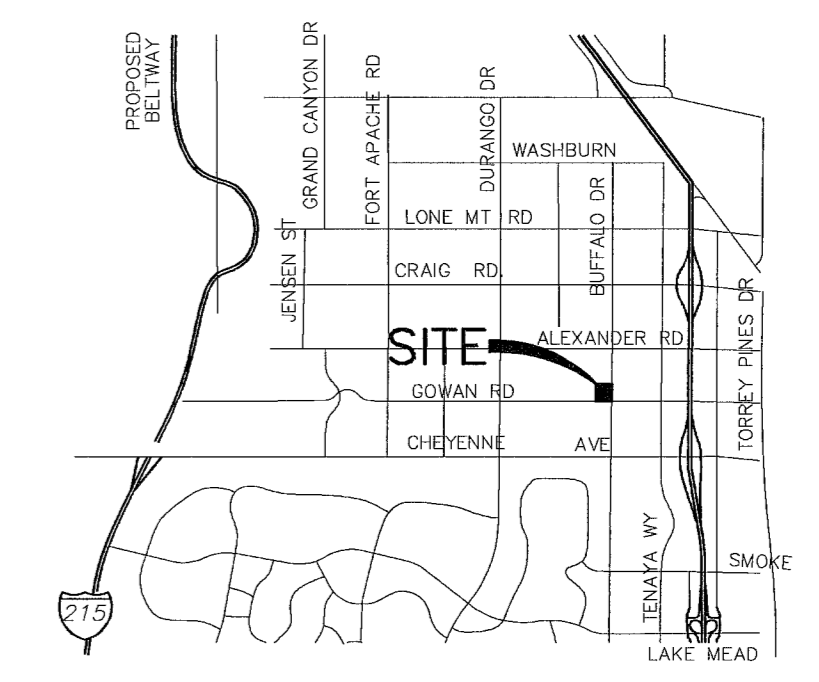


DAY DAWN ESTATES UNIT 1

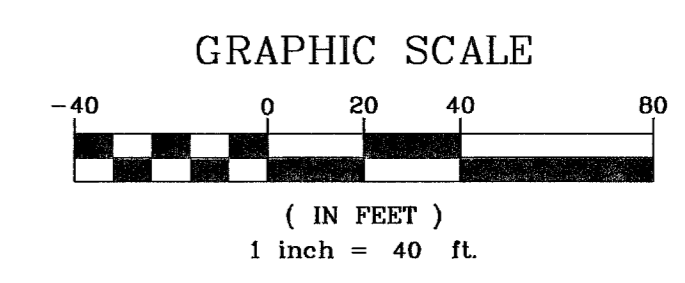
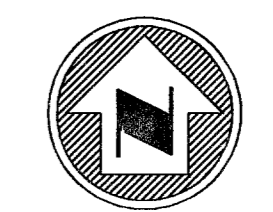
BOOK 111, PAGE 44 OF PLATS, ON FILE IN THE COUNTY RECORDER'S OFFICE, CLARK COUNTY, NEVADA.



1" = 40'



VICINITY MAP
NTS

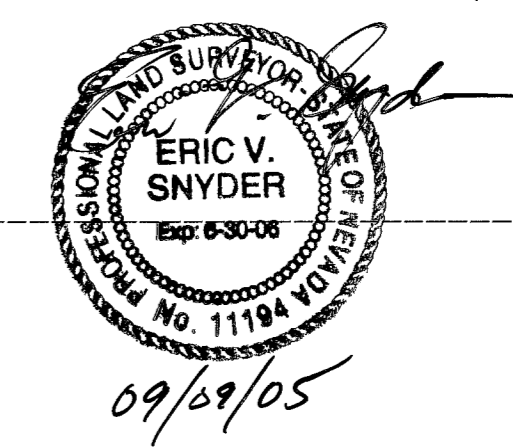


LEGEND

- PROPERTY/R.O.W. LINE
- CENTERLINE
- LOT LINE
- CURB LINE
- R.M. DIMENSION LINE
- ADJACENT PROPERTY
- SET TYPE III MONUMENT
STAMPED PLS 11194
- SET REFERENCE MONUMENT
STAMPED PLS 11194

SURVEYOR'S CERTIFICATE

I, ERIC V. SNYDER, A PROFESSIONAL LAND SURVEYOR LICENSED IN THE STATE OF NEVADA, DO HEREBY CERTIFY THAT THE MONUMENTS HAVE BEEN SET AND THE TIE DISTANCES WERE ESTABLISHED AS SHOWN HEREON.
THIS SURVEY WAS COMPLETED ON SEPTEMBER 9, 2005



ERIC V. SNYDER

PLS 11194

| | |
|---|---|
| SUMMIT ENGINEERING CORPORATION 1421 E. SUNSET, SUITE 17, LAS VEGAS, NV, 89119 PHONE: (702) 252-3238 FAX: (702) 252-3247 | SHEET 1 OF 1 |
| | MONUMENT TIE MAP OF DAY DAWN ESTATES UNIT 1 |
| BOOK 111, PAGE 44 OF PLATS COUNTY RECORDER'S OFFICE CITY OF LAS VEGAS, CLARK COUNTY, NEVADA | |
| SCALE: 1"=40' | JOB NO. 72455 |

83212

P:\DWGS\J72499\SURVEY\FIELD\72499TIE-UNIT1.dwg