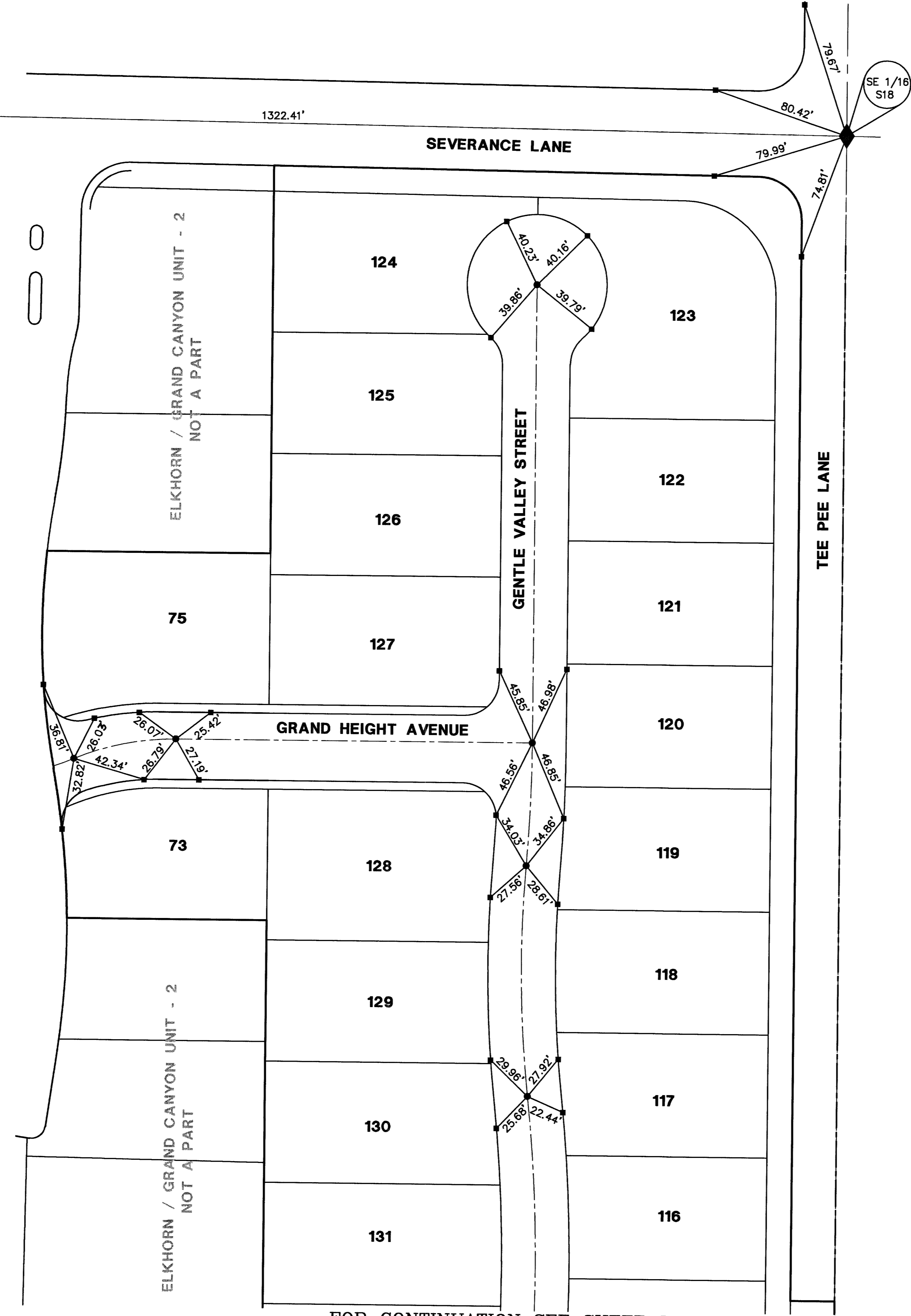


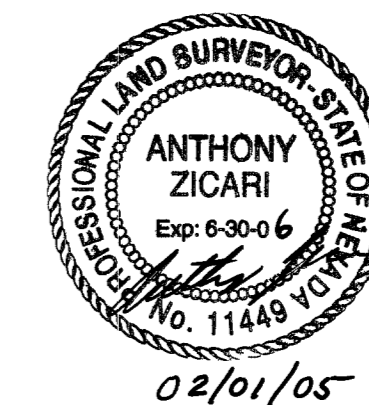
ELKHORN / GRAND CANYON - UNIT 4 MONUMENTATION TIE MAP

(A COMMON INTEREST COMMUNITY)
BEING A MERGER AND RESUBDIVISION OF A PORTION OF THE EAST HALF (E 1/2) OF THE SOUTHWEST QUARTER (SW 1/4) OF THE SOUTHEAST QUARTER (SE 1/4) OF SECTION 18, TOWNSHIP 19 SOUTH, RANGE 60 EAST, M.D.M., CITY OF LAS VEGAS, CLARK COUNTY, NEVADA.

TYPE III MONUMENT - 5/8" REBAR
W/AL. CAP STAMPED "VTN PLS
11449" W/REFERENCE MONUMENTS
PER "ELKHORN/GRAND CANYON - UNIT 2"

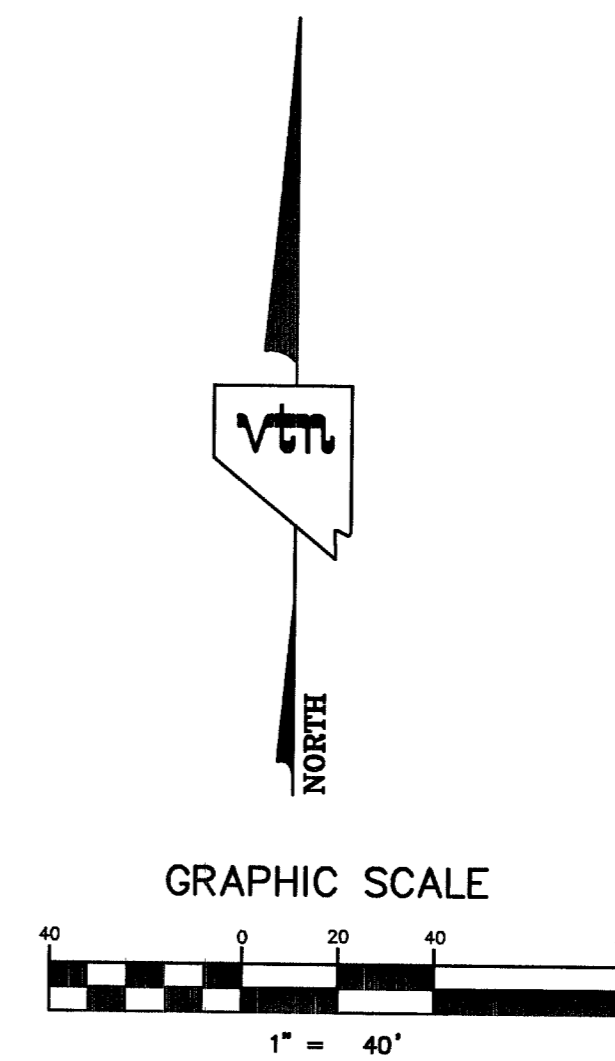


I, ANTHONY ZICARI, A PROFESSIONAL LAND SURVEYOR LICENSED IN THE STATE OF NEVADA, DO HEREBY CERTIFY THAT THE MONUMENTS HAVE BEEN SET AND THE TIE DISTANCES ESTABLISHED AS SHOWN HEREON. THIS SURVEY WAS COMPLETED ON JANUARY 14, 2005.



ANTHONY ZICARI, P.L.S.
NEVADA LICENSE NO. 11449

02/01/05



NOTES

SEE FINAL MAP FOR BEARING AND DISTANCES.
(BOOK 115, PAGE 0098)

LEGEND

- 2** LOT NUMBER
- RIGHT OF WAY
- LOT LINES
- SUBDIVISION BOUNDARY LINE
- STREET CENTERLINE
- BACK OF CURB LINE
- TYPE III MONUMENT - 5/8" REBAR AND AL. CAP STAMPED "VTN PLS 11449" WITH REFERENCE MONUMENTS IN TOP OF CURB
- TYPE IV-A REFERENCE MONUMENTS STAMPED "VTN PLS 11449" IN TOP OF CURB
- ◆ TYPE II MONUMENT - 2" BRASS CAP IN CONCRETE STAMPED "VTN PLS 11449" WITH REFERENCE MONUMENTS IN TOP OF CURB
- FOUND MONUMENT AS DESCRIBED

SHEET 1 OF 2