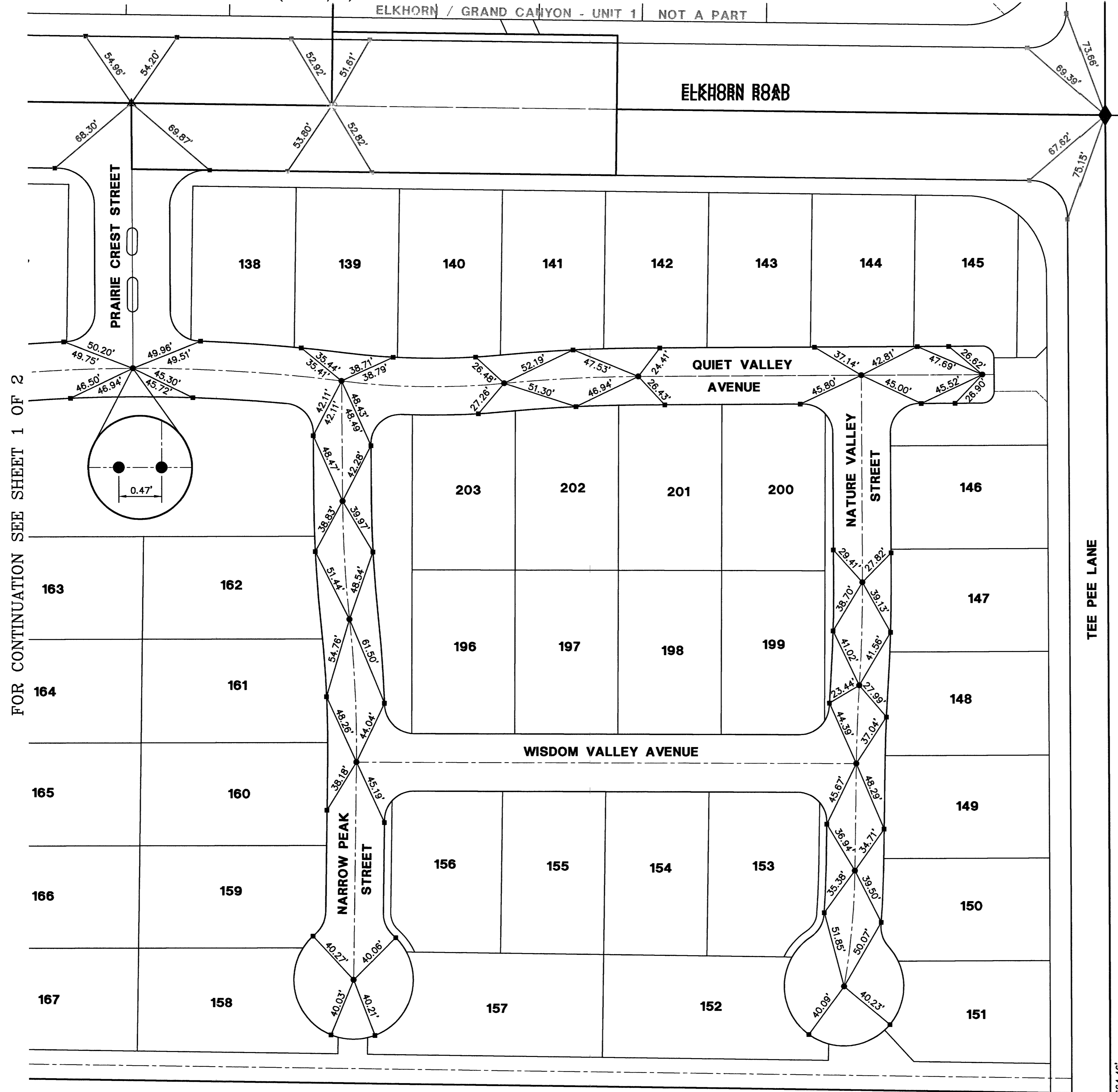


ELKHORN / GRAND CANYON - UNIT 3 MONUMENTATION TIE MAP

(A COMMON INTEREST COMMUNITY)
BEING A PORTION OF THE NORTH HALF (N1/2) OF THE NORTHWEST QUARTER (NW 1/4) OF THE NORTHEAST QUARTER
(NE 1/4) OF SECTION 19, TOWNSHIP 19 SOUTH, RANGE 60 EAST, M.D.M., CITY OF LAS VEGAS, CLARK COUNTY, NEVADA.

ELKHORN / GRAND CANYON - UNIT 1 | NOT A PART



FOR CONTINUATION SEE SHEET 1 OF 2

NOTES

SEE FINAL MAP FOR BEARING AND DISTANCES.
(BOOK 114, PAGE 11)

LEGEND

- 2** LOT NUMBER
- RIGHT OF WAY
- LOT LINES
- SUBDIVISION BOUNDARY LINE
- STREET CENTERLINE
- BACK OF CURB LINE
- TYPE III MONUMENT - 5/8" REBAR AND AL. CAP STAMPED "VTN PLS 11449" WITH REFERENCE MONUMENTS IN TOP OF CURB
- TYPE IV-A REFERENCE MONUMENTS STAMPED "VTN PLS 11449" IN TOP OF CURB
- ⊙ TYPE III MONUMENT - 5/8" REBAR AND AL. CAP STAMPED "VTN PLS 11449" PER ELKHORN / GRAND CANYON - UNIT 1 BOOK 108, PAGE 0038
- ◆ TYPE II MONUMENT - 2" BRASS CAP IN CONCRETE STAMPED "VTN PLS 11449" PER ELKHORN / GRAND CANYON - UNIT 1 BOOK 108, PAGE 0038

NE1/16
S19 FOUND 1" PLASTIC
CAP & REBAR
"RE 2092"