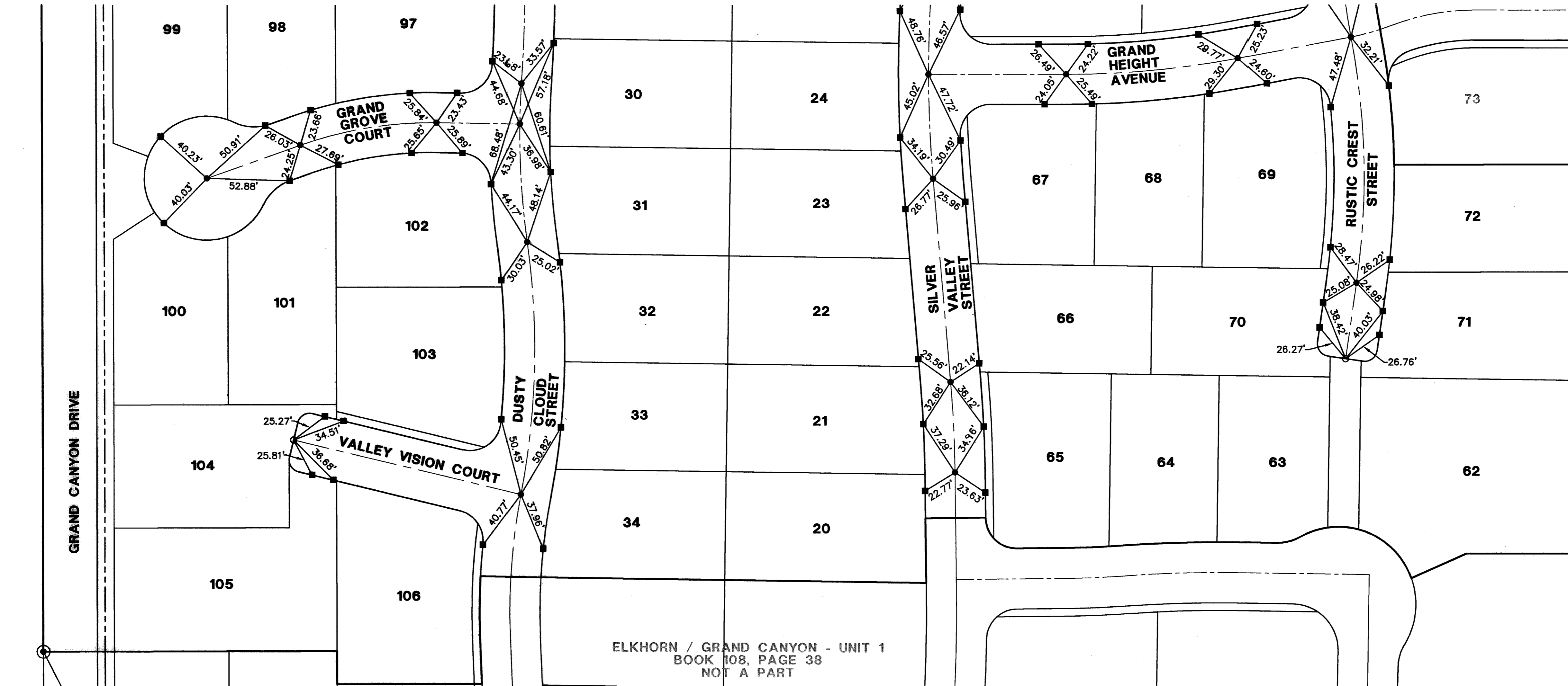


ELKHORN / GRAND CANYON - UNIT 2 MONUMENTATION TIE MAP

(A COMMON INTEREST COMMUNITY)
BEING A PORTION OF THE SOUTHWEST QUARTER (SW 1/4) OF THE
SOUTHEAST QUARTER (SE 1/4) OF SECTION 18, TOWNSHIP 19 SOUTH,
RANGE 60 EAST, M.D.M., CITY OF LAS VEGAS, CLARK COUNTY, NEVADA

FOR CONTINUATION SEE SHEET 1 OF 2



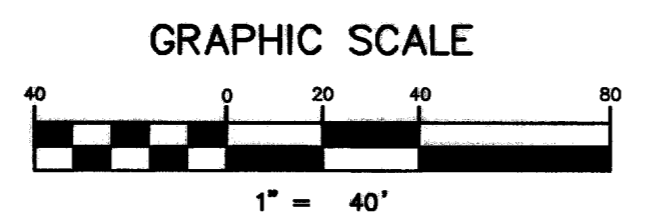
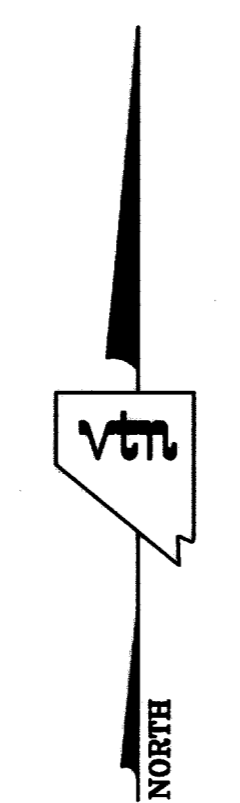
ELKHORN / GRAND CANYON - UNIT 1
BOOK 108, PAGE 38
NOT A PART

TYPE III MONUMENT - 5/8" REBAR W/AL. CAP
STAMPED "VTN PLS 11449" W/REFERENCE MONUMENTS
TIN TOP OF CURB PER ELKHORN/GRAND CANYON,
BOOK 108, PAGE 38

544.64'

1/4
S18
S19

FOUND 60D NAIL
ELKHORN ROAD



NOTES

SEE FINAL MAP FOR BEARING AND DISTANCES.
(BOOK 108, PAGE 0070)

LEGEND

- | | |
|----------|--|
| 2 | LOT NUMBER |
| ——— | RIGHT OF WAY |
| ——— | LOT LINES |
| ——— | SUBDIVISION BOUNDARY LINE |
| ——— | STREET CENTERLINE |
| ——— | BACK OF CURB LINE |
| ● | TYPE III MONUMENT - 5/8" REBAR AND AL. CAP STAMPED "VTN PLS 11449" WITH REFERENCE MONUMENTS IN TOP OF CURB |
| ■ | TYPE IV-A REFERENCE MONUMENTS STAMPED "VTN PLS 11449" IN TOP OF CURB |
| ⊙ | FOUND MONUMENT AS NOTED |
| ○ | SET SCRIBE IN PLACE OF TYPE III MONUMENT - 5/8" REBAR & AL. CAP |

SHEET 2 OF 2