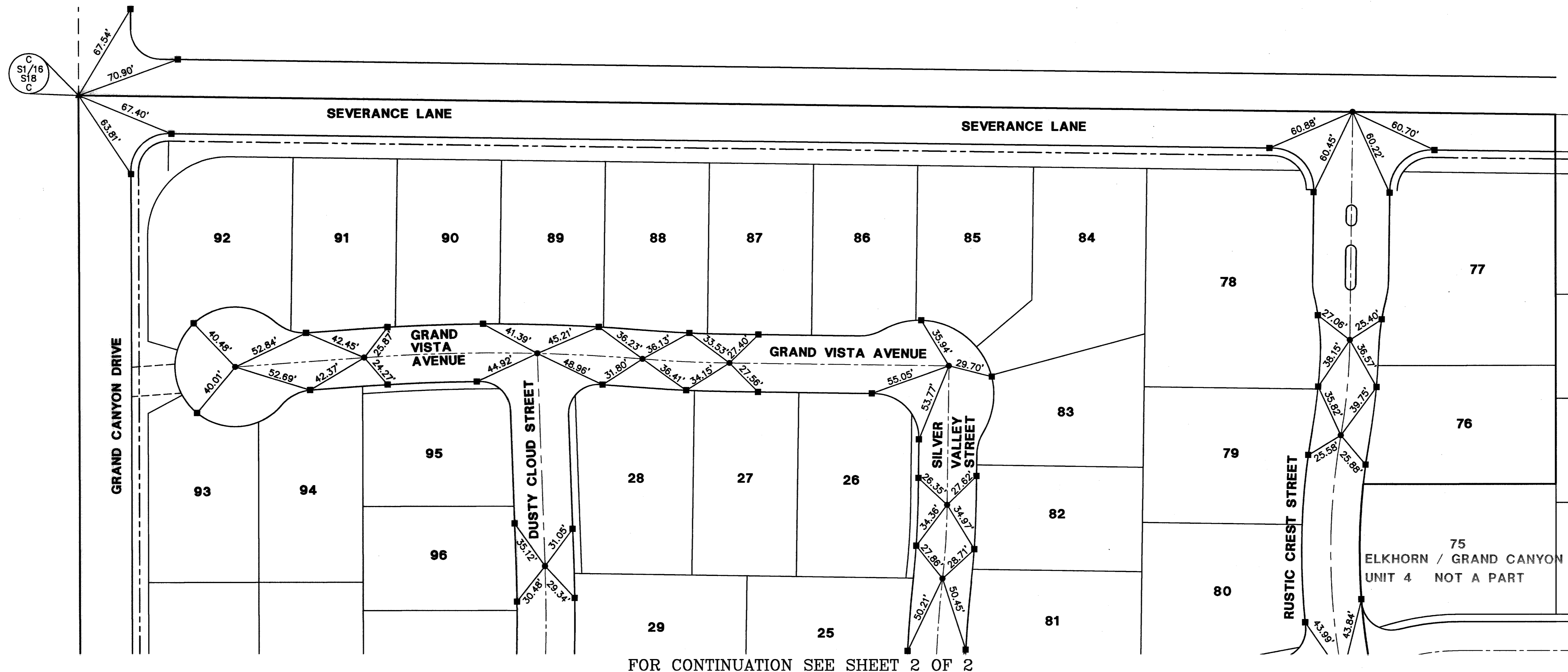


# ELKHORN / GRAND CANYON - UNIT 2 MONUMENTATION TIE MAP

(A COMMON INTEREST COMMUNITY)  
BEING A PORTION OF THE SOUTHWEST QUARTER (SW 1/4) OF THE  
SOUTHEAST QUARTER (SE 1/4) OF SECTION 18, TOWNSHIP 19 SOUTH,  
RANGE 60 EAST, M.D.M., CITY OF LAS VEGAS, CLARK COUNTY, NEVADA



FOR CONTINUATION SEE SHEET 2 OF 2

### NOTES

SEE FINAL MAP FOR BEARING AND DISTANCES.  
(BOOK 108, PAGE 0070)

### LEGEND

- |          |   |
|----------|---|
| <b>2</b> | LOT NUMBER  |
| ---      | RIGHT OF WAY  |
| ---      | LOT LINES   |
| ---      | SUBDIVISION BOUNDARY LINE   |
| ---      | STREET CENTERLINE   |
| ---      | BACK OF CURB LINE   |
| ●        | TYPE III MONUMENT - 5/8" REBAR AND AL. CAP STAMPED "VTN PLS 11449" WITH REFERENCE MONUMENTS IN TOP OF CURB  |
| ■        | TYPE IV-A REFERENCE MONUMENTS STAMPED "VTN PLS 11449" IN TOP OF CURB  |
| ⊙        | FOUND MONUMENT AS NOTED   |
| ○        | SET SCRIBE IN PLACE OF TYPE III MONUMENT - 5/8" REBAR & AL. CAP   |
| ▲        | TYPE II MONUMENT - 2" BRASS CAP IN CONCRETE STAMPED "VTN PLS 11449" WITH REFERENCE MONUMENTS IN TOP OF CURB |

SHEET 1 OF 2

I, ANTHONY ZICARI, A PROFESSIONAL LAND SURVEYOR LICENSED IN THE STATE OF NEVADA, DO HEREBY CERTIFY THAT THE MONUMENTS HAVE BEEN SET AND THE TIE DISTANCES ESTABLISHED AS SHOWN HEREON. THIS SURVEY WAS COMPLETED ON JANUARY 13, 2005.



ANTHONY ZICARI, P.L.S.  
NEVADA LICENSE NO. 11449

01/19/05

