

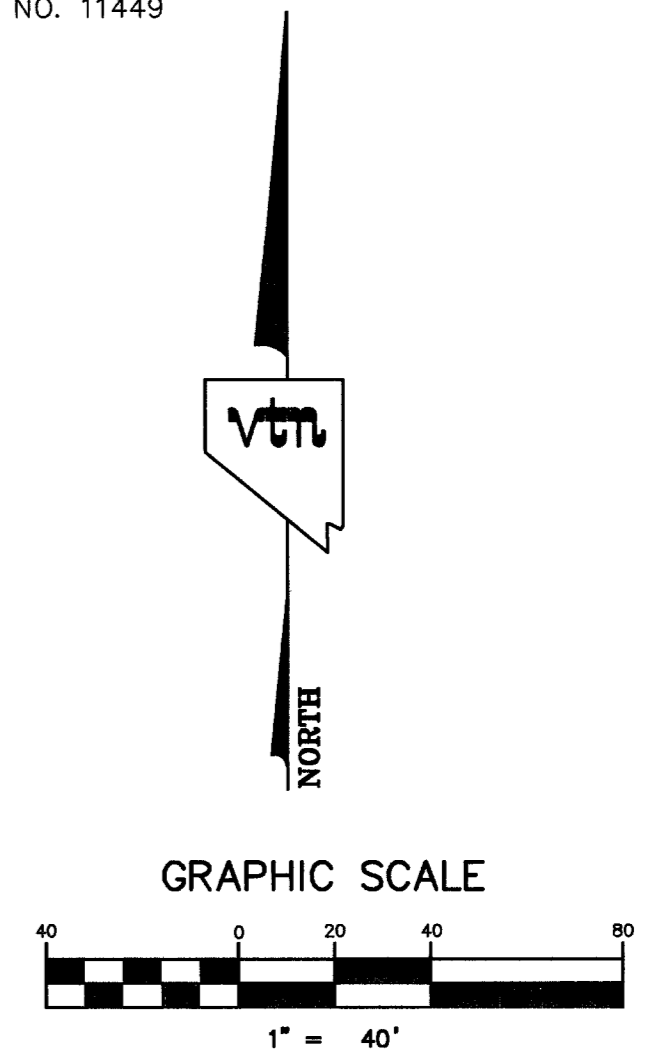
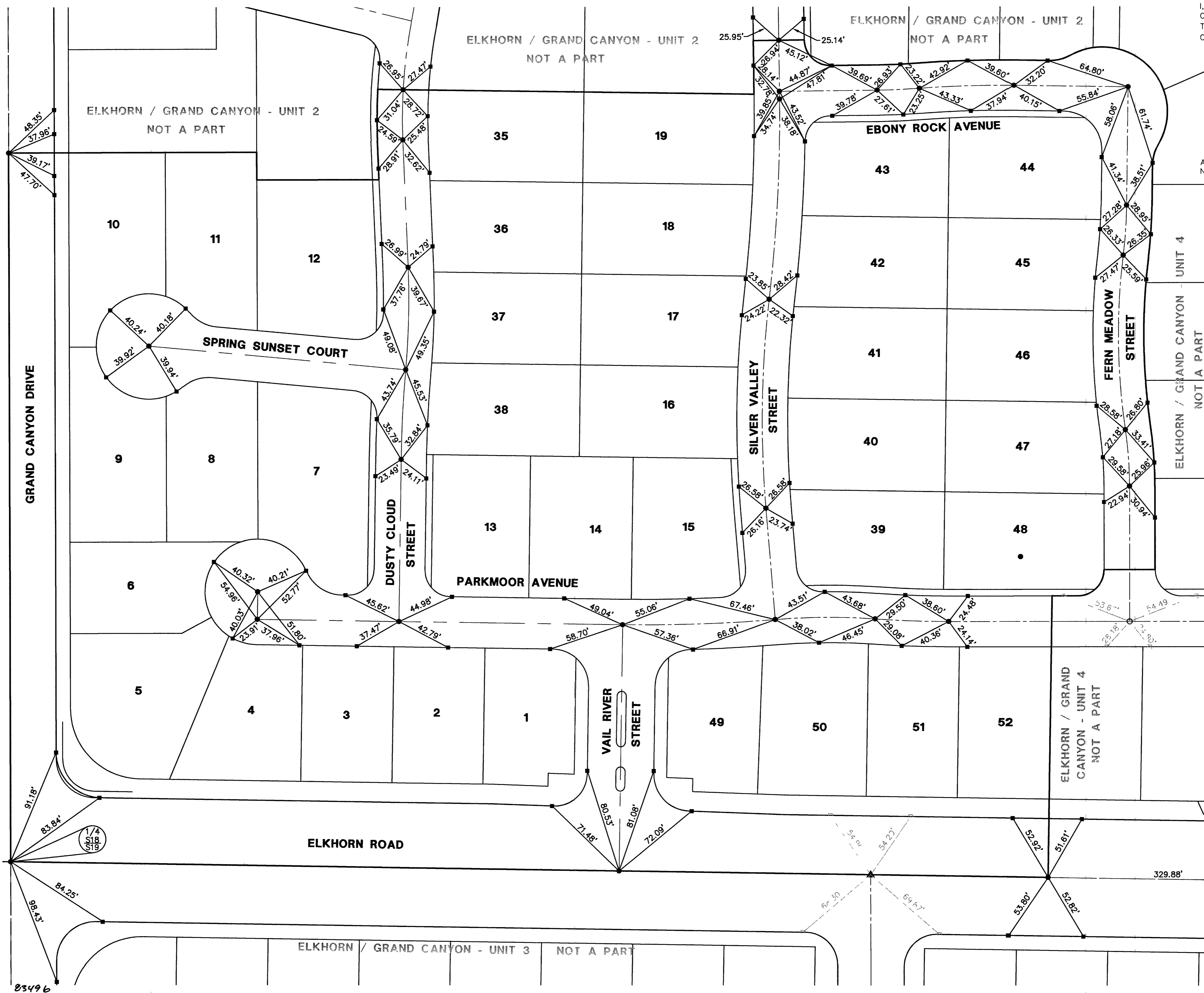
ELKHORN / GRAND CANYON - UNIT 1 MONUMENTATION TIE MAP

(A COMMON INTEREST COMMUNITY)
BEING A PORTION OF THE SOUTH HALF (S 1/2) OF THE SOUTHWEST QUARTER (SW 1/4) OF THE SOUTHEAST QUARTER
(SE 1/4) OF SECTION 18, TOWNSHIP 19 SOUTH, RANGE 60 EAST, M.D.M., CITY OF LAS VEGAS, CLARK COUNTY, NEVADA.

I, ANTHONY ZICARI, A PROFESSIONAL LAND SURVEYOR LICENSED IN THE STATE OF NEVADA, DO HEREBY CERTIFY THAT THE MONUMENTS HAVE BEEN SET AND THE TIE DISTANCES ESTABLISHED AS SHOWN HEREON. THIS SURVEY WAS COMPLETED ON JANUARY 14, 2005.



ANTHONY ZICARI, P.L.S.
NEVADA LICENSE NO. 11449



- NOTES**
SEE FINAL MAP FOR BEARING AND DISTANCES.
(BOOK 108, PAGE 0038)
- LEGEND**
- 2 LOT NUMBER
 - RIGHT OF WAY
 - LOT LINES
 - SUBDIVISION BOUNDARY LINE
 - STREET CENTERLINE
 - BACK OF CURB LINE
 - TYPE III MONUMENT - 5/8" REBAR AND AL. CAP STAMPED "VTN PLS 11449" WITH REFERENCE MONUMENTS IN TOP OF CURB
 - TYPE IV-A REFERENCE MONUMENTS STAMPED "VTN PLS 11449" IN TOP OF CURB
 - TYPE III MONUMENT - 5/8" REBAR AND AL. CAP STAMPED "VTN PLS 11449" - PER ELKHORN / GRAND CANYON - UNIT 4 BOOK 115, PAGE 0098
 - ▲ TYPE III MONUMENT - 5/8" REBAR AND AL. CAP STAMPED "VTN PLS 11449" - PER ELKHORN / GRAND CANYON - UNIT 3 BOOK 114, PAGE 11
 - ⊙ FOUND AS DESCRIBED
 - EXISTING REFERENCE MONUMENT STAMPED "VTN PLS 11449"

FOUND ALUMINUM CAP "ILLEGIBLE"
E1/16
S18
S19