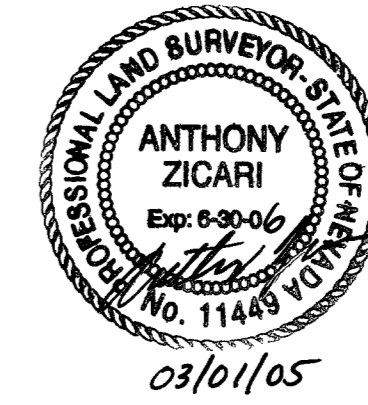
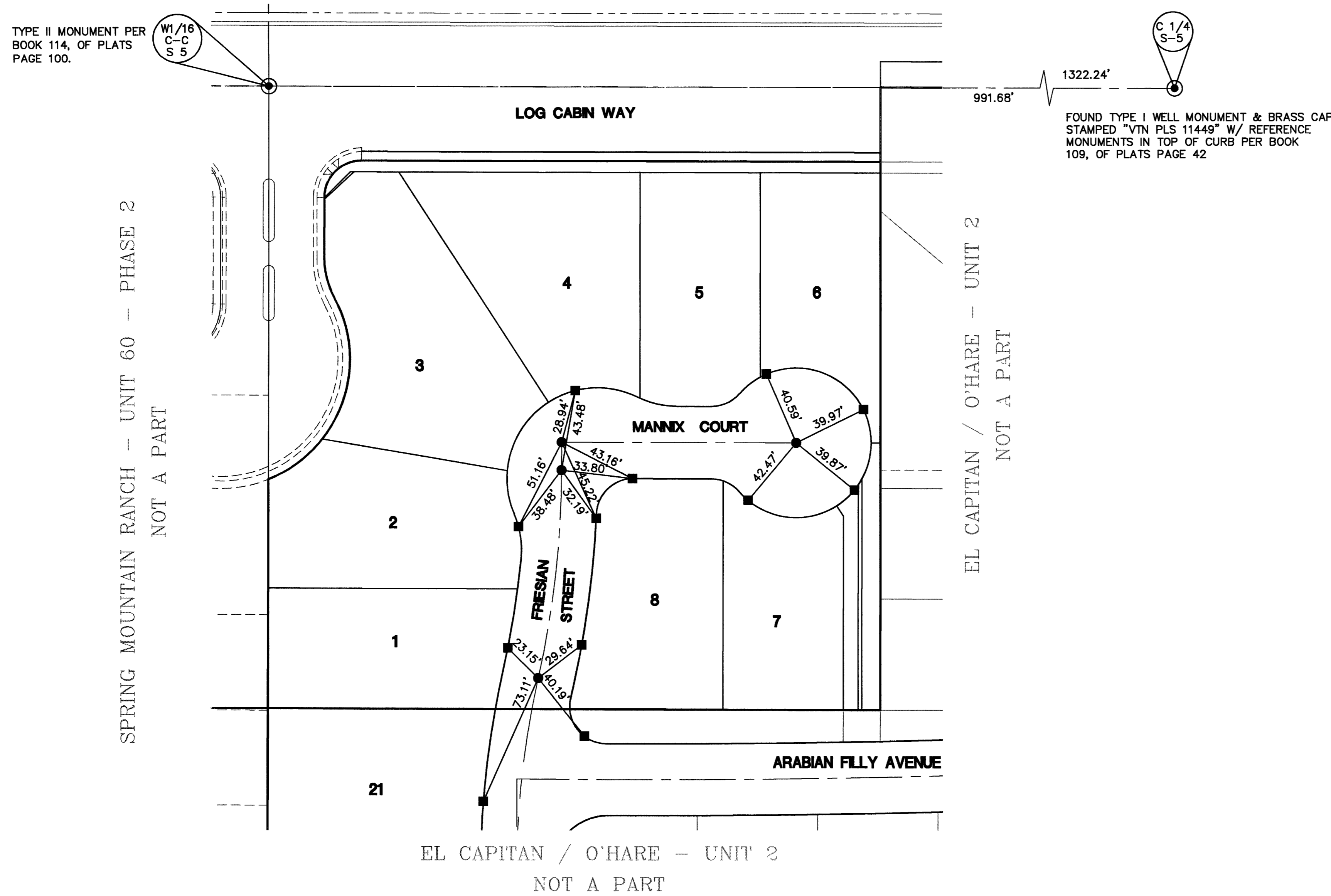


EL CAPITAN / O'HARE - UNIT 3

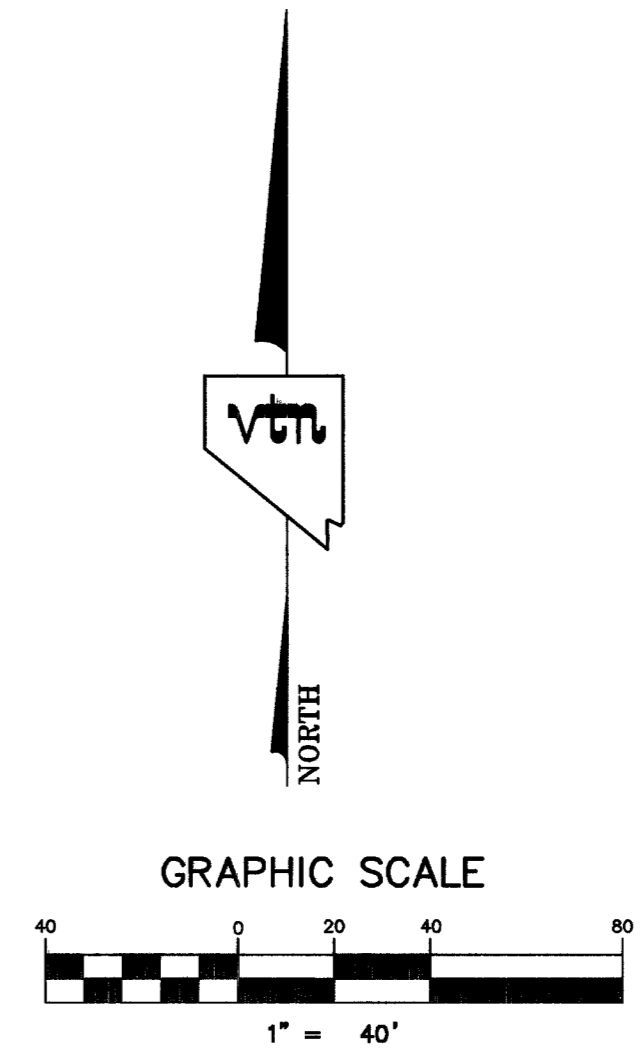
MONUMENTATION TIE MAP

(A COMMON INTEREST COMMUNITY)
 BEING A SUBDIVISION OF A PORTION OF THE SOUTHEAST QUARTER (SE 1/4) OF THE SOUTHWEST QUARTER
 (SW 1/4) OF SECTION 5, TOWNSHIP 19 SOUTH, RANGE 60 EAST, M.D.M., CITY OF LAS VEGAS, CLARK COUNTY, NEVADA

I, ANTHONY ZICARI, A PROFESSIONAL LAND SURVEYOR LICENSED IN THE STATE OF NEVADA, DO HEREBY CERTIFY THAT THE MONUMENTS HAVE BEEN SET AND THE TIE DISTANCES ESTABLISHED AS SHOWN HEREON. THIS SURVEY WAS COMPLETED ON FEBRUARY 28, 2005.



ANTHONY ZICARI, P.L.S.
 NEVADA LICENSE NO. 11449



NOTES

SEE FINAL MAP FOR BEARING AND DISTANCES.
 (BOOK 115, PAGE 29)

LEGEND

- 2** LOT NUMBER
- (X)** BLOCK NUMBER
- RIGHT OF WAY
- LOT LINES
- SUBDIVISION BOUNDARY LINE
- STREET CENTERLINE
- BACK OF CURB LINE
- SET TYPE III MONUMENT - 5/8" REBAR AND AL. CAP STAMPED "VTN PLS 11449" WITH REFERENCE MONUMENTS IN TOP OF CURB
- SET TYPE IV-A REFERENCE MONUMENTS STAMPED "VTN PLS 11449" IN TOP OF CURB
- ⊙** FOUND MONUMENT AS NOTED

SHEET 1 OF 1

77907

058-4752-3