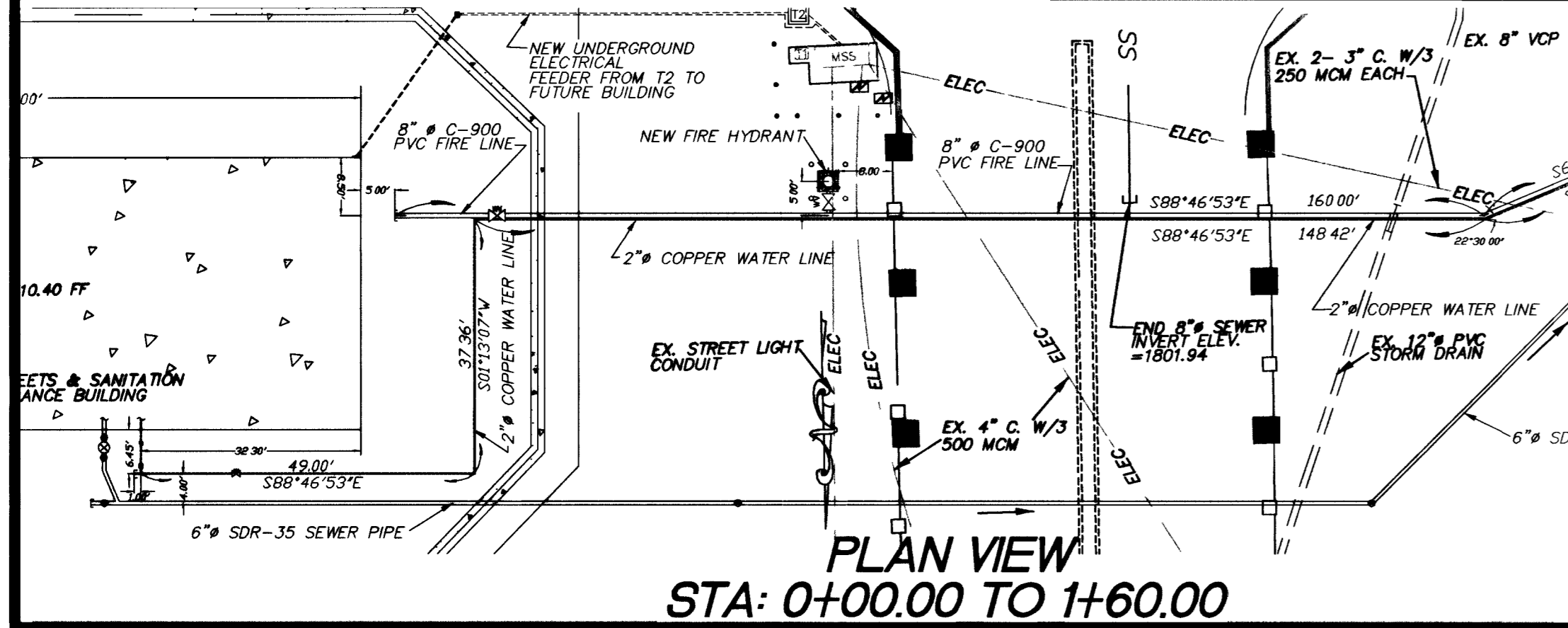
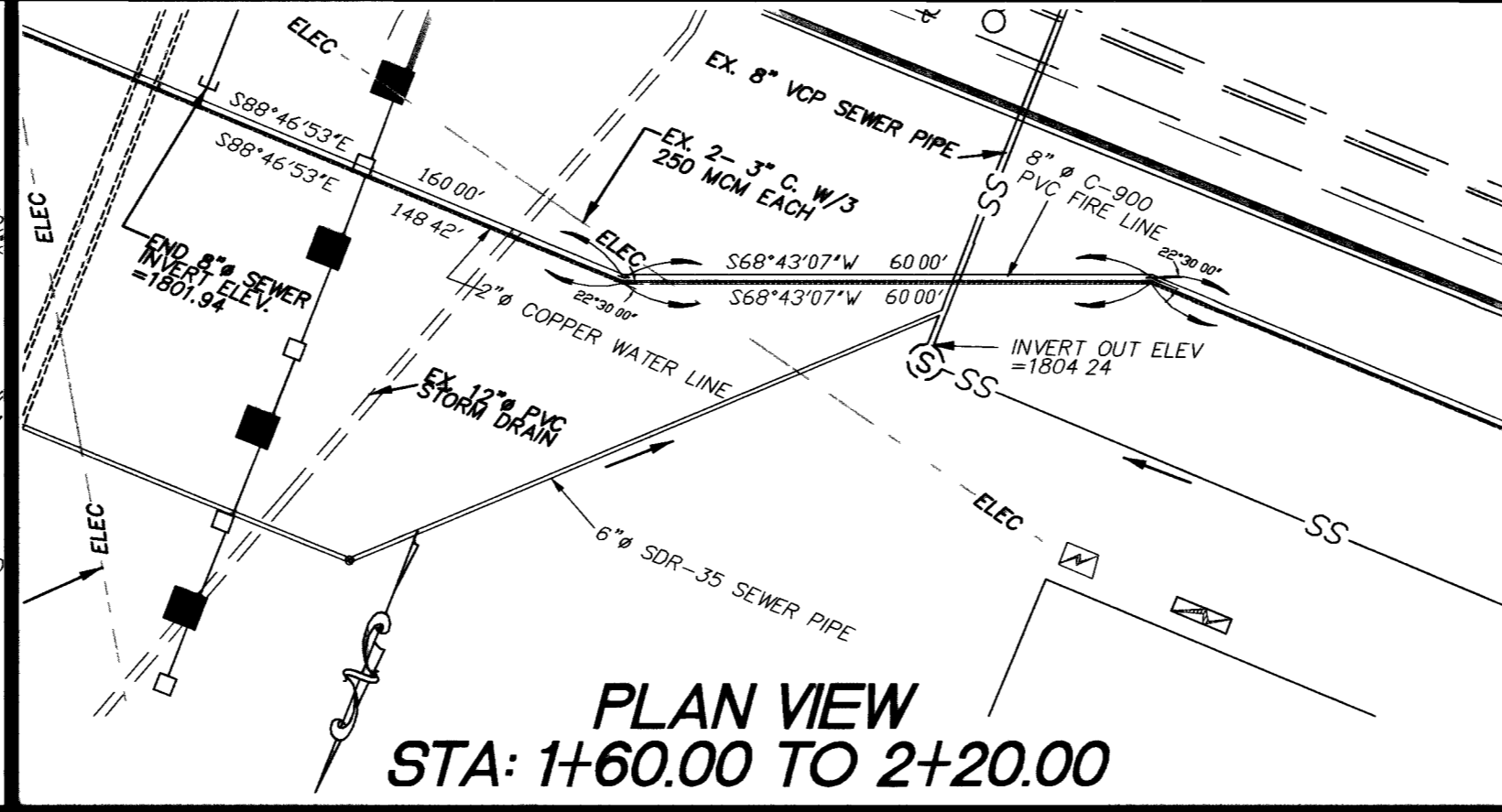


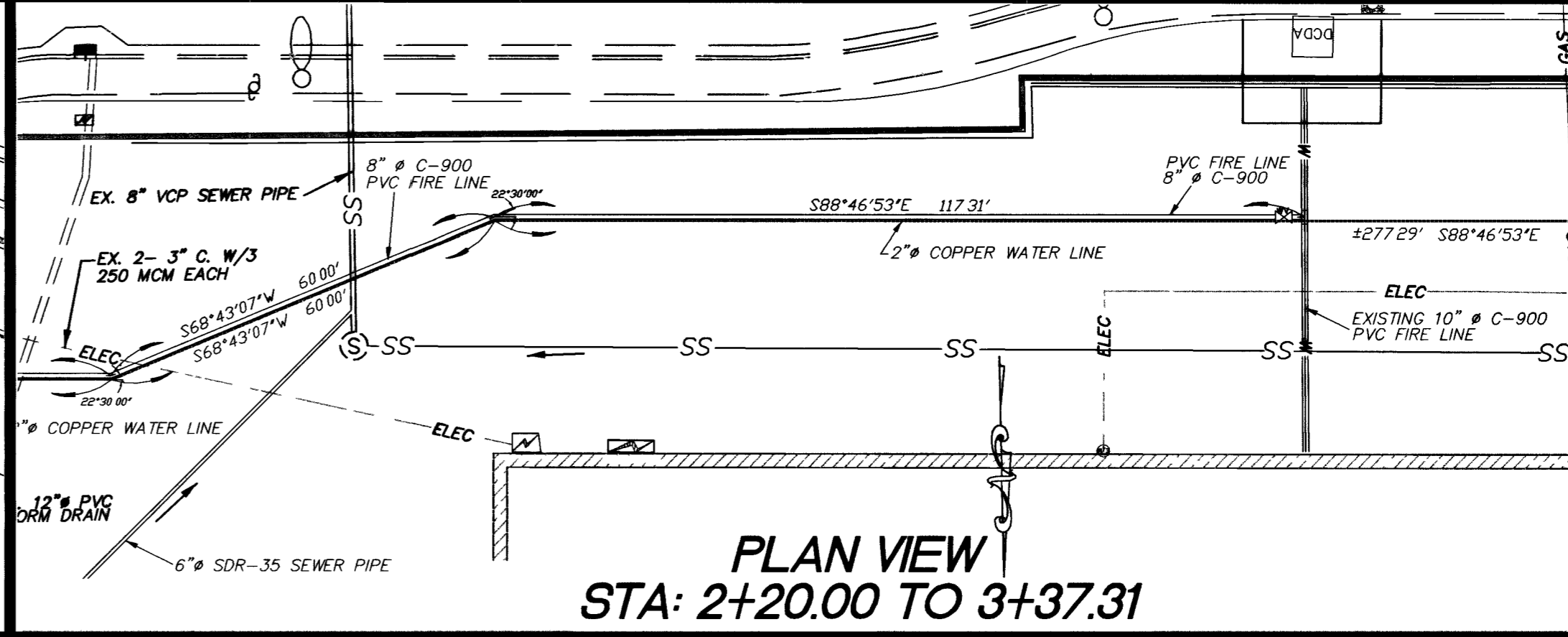
F:\# Depot\Streets\Rehab\PROJECTS\Hector Projects\Maintenance Bldg East Yard\DWG\Civil\DWG\Employee Parking Lot + storage area at East Yard.dwg



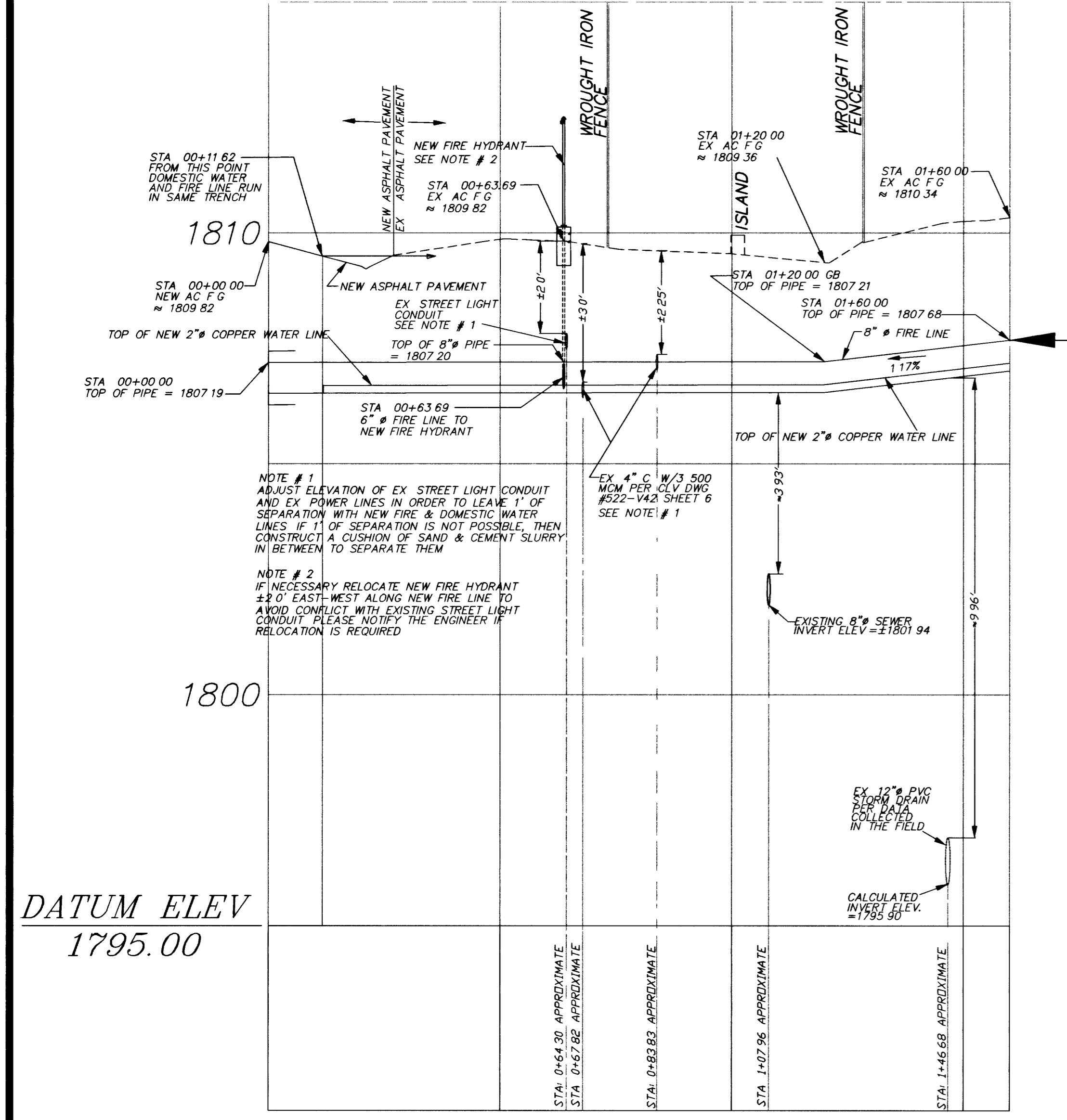
PLAN VIEW  
STA: 0+00.00 TO 1+60.00



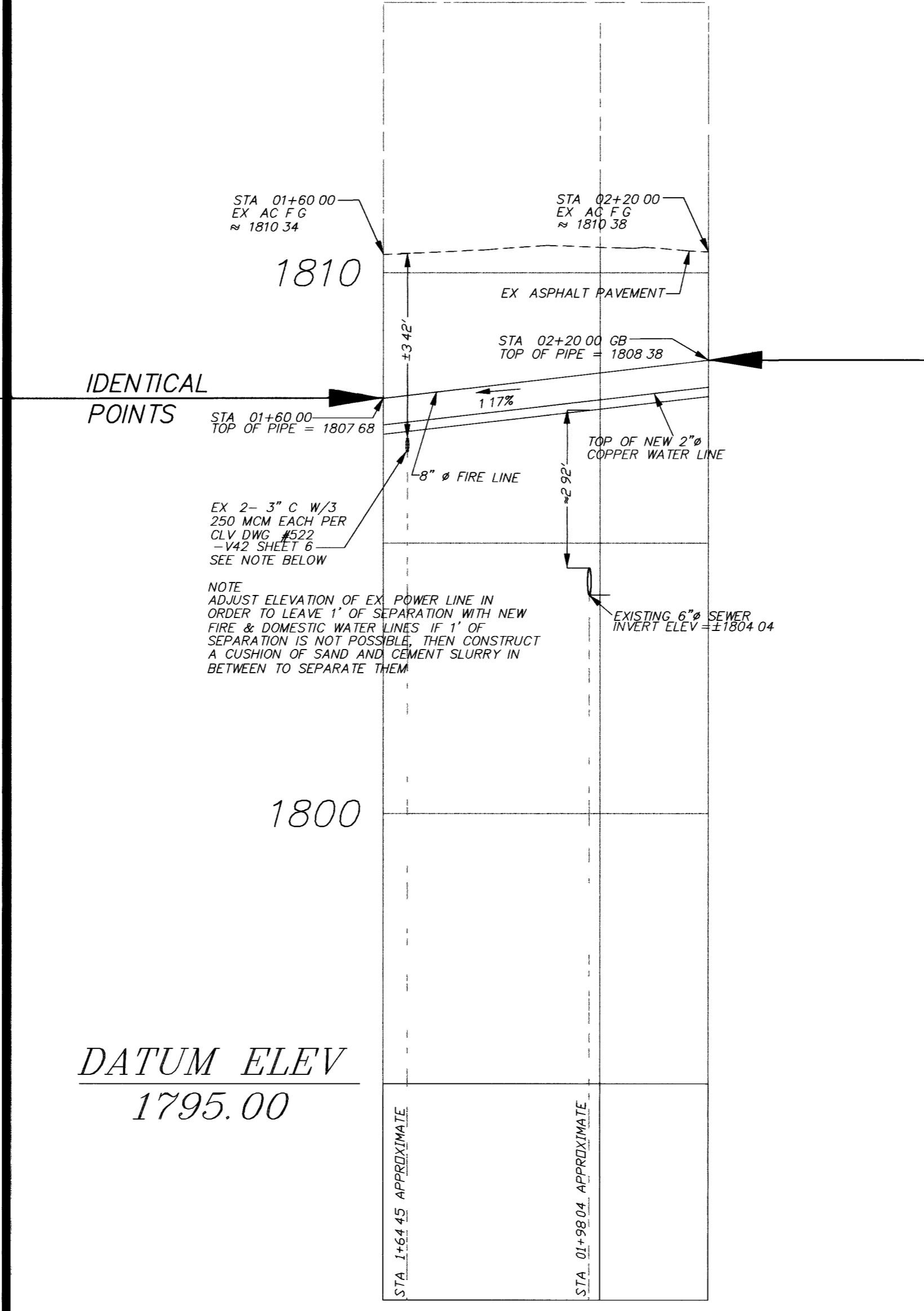
PLAN VIEW  
STA: 1+60.00 TO 2+20.00



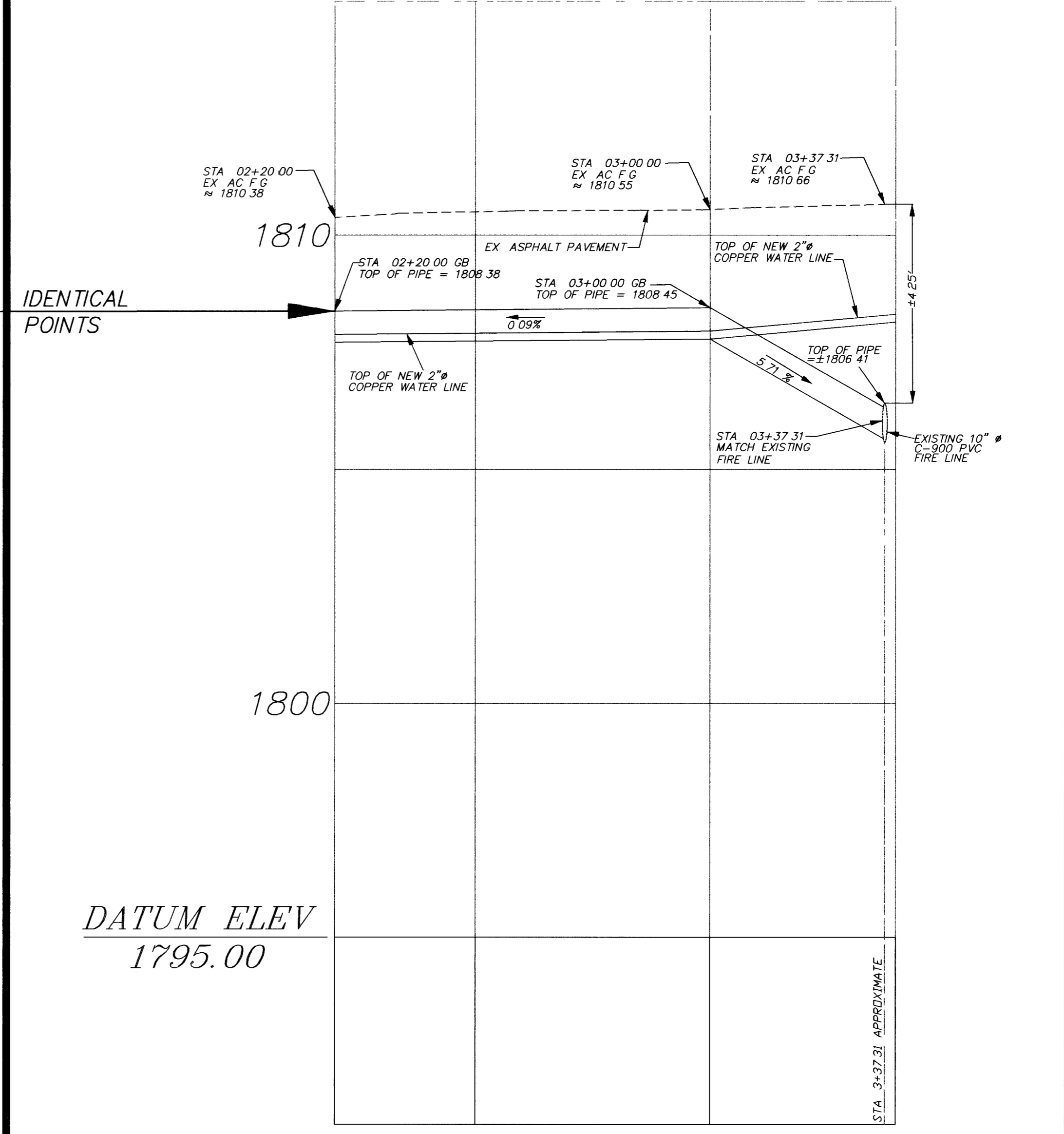
PLAN VIEW  
STA: 2+20.00 TO 3+37.31



PROFILE VIEW  
STA: 0+00.00 TO 1+60.00



PROFILE VIEW  
STA: 1+60.00 TO 2+20.00



PROFILE VIEW  
STA: 2+20.00 TO 3+37.31

- LEGEND**
- ▲ CONTROL POINT
  - MATCH LINE
  - FLOW LINE
  - EXISTING SOIL
  - EXISTING CONCRETE PAVEMENT TO BE REMOVED
  - EXISTING SLURRY SEAL LAYER TO BE REMOVED
  - EXISTING ASPHALT PAVEMENT TO BE REMOVED
  - EXISTING ASPHALT PAVEMENT TO BE REMOVED BY OTHERS
  - EXISTING ASPHALT PAVEMENT TO REMAIN
  - EXISTING ASPHALT PAVEMENT AND NECESSARY BASE OR NATIVE MATERIAL TO BE REMOVED
  - NEW ASPHALT PAVEMENT
  - NEW 3" ASPHALT PAVEMENT OVER 8" TYPE II AGGREGATE BASE
  - NEW CONCRETE SLAB (BY OTHERS)
  - EXISTING ELECTRIC VAULT/PULL BOX
  - EXISTING ELECTRIC METER
  - EXISTING PARKING LIGHT
  - EXISTING PROPANE TANK

- EXISTING CHAIN LINK FENCE TO BE REMOVED
- EXISTING CHAIN LINK FENCE
- EXISTING STORM DRAIN MANHOLE
- STREET LIGHT
- POWER OR TELEPHONE POLE
- EXISTING DROP INLET
- EXISTING GUARD POST
- NEW GUARD POST
- EXISTING SHED
- (XXXX.XX) FINISHED GRADE
- (XXXX.XX) EXISTING SLOPE
- XXXX.XX PROPOSED SLOPE
- "THROUGH LANE" USE ARROW SYMBOL
- EXISTING BLOCK WALL
- PARKING STRIPPING
- PHYSICALLY CHALLENGED PERSON PARKING

- 6" CONCRETE WHEEL BLOCK
- SIGN
- EXISTING ELECTRIC MAIN SERVICE SWITCHBOARD
- EXISTING ELECTRIC TRANSFORMER
- NEW ELECTRIC TRANSFORMER
- NEW ELECTRIC PULLBOX
- NEW ELECTRIC PANEL

**UTILITY NOTE:**  
UTILITY LOCATIONS SHOWN HEREON ARE APPROXIMATE ONLY. IT SHALL BE THE CONTRACTOR'S RESPONSIBILITY TO DETERMINE THE EXACT VERTICAL AND HORIZONTAL LOCATION OF ALL EXISTING UNDERGROUND UTILITIES PRIOR TO COMMENCING CONSTRUCTION. NO REPRESENTATION IS MADE THAT ALL EXISTING UTILITIES ARE SHOWN HEREON. THE ENGINEER ASSUMES NO RESPONSIBILITY FOR UTILITIES NOT SHOWN OR UTILITIES IN THEIR PROPER LOCATION.

**SAFETY ALERT**  
Call before you dig  
593-6111  
1-800-227-2600  
1-702-455-7644

- KEY NOTES**
- REMOVAL ITEMS:**
- 1) REMOVE EXISTING CONCRETE PAVEMENT
  - 2) REMOVE EXISTING SLURRY SEAL LAYER
  - 3) REMOVE NECESSARY BASE AND/OR NATIVE MATERIAL TO ACCOMMODATE NEW ASPHALT PAVEMENT AND BASE OR NEW CONCRETE CURB & GUTTER AND BASE TO THE GRADES AND SLOPES SHOWN ON PLANS
  - 4) REMOVE EXISTING ASPHALT PAVEMENT
  - 5) SAW CUT LINE
  - 6) REMOVE EXISTING CHAIN LINK FABRIC TO ALLOW FOR GRADING AND PAVING
  - 7) REINSTALL FABRIC AFTER PAVING OPERATIONS
  - 8) REMOVE A PORTION OF EXISTING CHAIN LINK FENCE TO ACCOMMODATE NEW ENTRANCE DIMENSIONS
  - 9) REMOVE EXISTING CHAIN LINK FENCE GATE
  - 10) REMOVE EXISTING CHAIN LINK FENCE
  - 11) REMOVE EXISTING PARKING LIGHT BASE
  - 12) PROTECT IN PLACE
  - 13) REMOVE EXISTING CONCRETE COLLAR AND MAINTAIN CURB ELEVATION
  - 14) REMOVE NECESSARY SECTIONS OF EXISTING SIDEWALK, CURB & GUTTER
  - 15) REMOVE EXISTING CONCRETE BUMPER BLOCK
  - 16) REMOVE EXISTING DECOMPOSED GRANITE AND NATIVE MATERIAL TO ACCOMMODATE NEW CONCRETE PAN GUTTER WITH CURB WALL
  - 17) REMOVE NECESSARY PORTIONS OF EXISTING CHAIN LINK FENCE
  - 18) REMOVE NECESSARY BLOCK WALL AND BLOCK WALL FOOTING TO ACCOMMODATE BLOCK WALL OPENING PER DETAIL 3 ON SHEET # 8
  - 19) REMOVE NECESSARY SECTIONS OF EXISTING CONCRETE ISLAND TO ACCOMMODATE NEW SANITARY SEWER PIPE OR NEW DOMESTIC WATER LINE OR NEW FIRE LINE. SAWCUT TO THE NEAREST WEAKENED JOINT

- CONSTRUCTION ITEMS:**
- 1) CONSTRUCT 3" HOT PLANT MIX RECYCLED BITUMINOUS PAVEMENT CATEGORY II TYPE 3 OVER 6" OF TYPE II AGGREGATE BASE COMPACTED TO 95% SCARIFY AND RECOMPACT 3" OF NATIVE MATERIAL TO 95%
  - 2) CONSTRUCT CONCRETE PAN GUTTER PER SECTION A ON SHEET # 7
  - 3) CONSTRUCT 6'0" x 6'0" CONCRETE SPLASH PAN PER DETAIL 1 ON SHEET # 7
  - 4) ADJUST MANHOLE TO FINISHED GRADE AND CONSTRUCT CONCRETE COLLAR PER USD DWG #408
  - 5) CONSTRUCT CONCRETE FILLED 8" DIAMETER X 4' HIGH STEEL BOLLARD; SEE DETAIL 2 ON SHEET # 7
  - 6) REMOVE & REPLACE EXISTING PULL BOX AND CONCRETE COLLAR, NEW PULL BOX TO BE TRAFFIC RATED
  - 7) CONSTRUCT SIDEWALK DRAIN PER USD DWG # 238
  - 8) INSTALL 6" HIGH CHAIN LINK FENCE PER USD DWG # 252
  - 9) MATCH LINE, NEW A.C. OR CONCRETE TO MATCH EXISTING OR NEW
  - 10) CONSTRUCT NECESSARY CONCRETE SIDEWALK TO MATCH EXISTING PER USD DWG # 234
  - 11) CONSTRUCT 1/2" EXPANSION JOINT PER DETAIL 4 ON SHEET # 9
  - 12) CONSTRUCT BLOCK WALL OPENING PER DETAIL 3 ON SHEET # 8
  - 13) CONSTRUCT NECESSARY 8" HIGH BLOCK WALL W/CAP TO REPLACE REMOVED BLOCK WALL AREAS PER DETAIL 3 ON SHEET # 8 & DETAIL B-103-2 BY CLV BUILDING & SAFETY PER SECTION D ON SHEET # 7
  - 14) NOT USED
  - 15) CONSTRUCT 3" HOT PLANT MIX RECYCLED BITUMINOUS PAVEMENT CATEGORY II TYPE 3 OVER 8" MINIMUM OF TYPE II AGGREGATE BASE COMPACTED TO 95% SUBGRADE SHALL BE SCARIFIED AND RECOMPACTED TO 95% IN AREAS WHERE ADDITIONAL FILL IS REQUIRED. SCARIFY AND RECOMPACT 3" OF EXISTING AGGREGATE BASE OR NATIVE SUBGRADE TO 95%. ADD ANY NECESSARY NEW TYPE II AGGREGATE BASE AND COMPACT TO 95% TO MEET GRADES & SLOPES SHOWN ON PLANS
  - 16) CONSTRUCT FULL DEPTH A.C. PATCH PER USD DWG # 504
  - 17) NOT USED
  - 18) INSTALL 6" HIGH, 3'0" WIDE CHAIN LINK PEDESTRIAN GATE PER USD DWG # 253

- 19) PROVIDE & INSTALL NEW 6" SDR-35 PIPE, INSTALL PER USD DWGS # 503 & # 505
  - 20) CONNECT NEW 6" SDR-35 PIPE TO EXISTING SANITARY SEWER PIPE
  - 21) PROVIDE & INSTALL 6" SANITARY SEWER CLEAN OUT PER DETAIL NO. 8 ON SHEET # 9
  - 22) EXISTING UTILITY LINES
  - 23) MATCH EXISTING ISLAND CONDITIONS
  - 24) PROVIDE & INSTALL NEW 2" COPPER WATER LINE, INSTALL PER USD DWG # 503, UDACS PLATE NO. 6B AND DETAIL NO. 7 ON SHEET # 9
  - 25) PROVIDE & INSTALL NEW 8" C-900 PVC FIRE LINE, INSTALL PER USD DWG # 503, UDACS PLATE NO. 6B AND DETAIL NO. 7 ON SHEET # 9
  - 26) PROVIDE & INSTALL NEW 2" BALL VALVE AND VALVE BOX, INSTALL PER USD DWG # 517 & UDACS PLATE NO. 8
  - 27) PROVIDE & INSTALL NEW 8" GATE VALVE AND VALVE BOX, INSTALL PER USD DWG # 517 & UDACS PLATE NO. 8
  - 28) PROVIDE & INSTALL NEW FIRE HYDRANT ASSEMBLY & VALVE, INSTALL PER USD DWG # 516 & UDACS PLATE NO. 7
  - 29) CONNECT NEW 8" C-900 PVC FIRE LINE WITH 10" X 8" TEE AND 9" GATE VALVE TO EXISTING 10" C-900 PVC FIRE LINE
  - 30) CONNECT NEW 2" WATER LINE TO EXISTING 1" WATER LINE WITH 1" X 1" X 1" TEE, 1" BALL VALVE W/VALVE BOX AND 1" X 2" INCREASER
  - 31) STUB & CAP NEW 8" C-900 PVC FIRE LINE
  - 32) NOT USED
  - 33) TO 20) NOT USED
- BASIS OF BEARINGS:**  
CENTERLINE OF BONANZA RD, BEARS N 89°46'11" W BETWEEN RECORDS RD & SANDHILL RD, AS SHOWN ON THE FINAL MAP OF "SMITH'S SUBDIVISION" RECORDED IN BOOK 73 OF PLATS, PAGE 31, CLARK COUNTY, NEVADA, RECORDS BENCHMARK
- CLV 5M 21.00' BRASS RIVET & PLATE IN TOP OF CURB, N/5' OF BONANZA +/- 200' W OF FAMILY COURT CENTER ELEV. 1806.39 (NAVD83)



NO.	DATE:	DESCRIPTION

**DEPARTMENT OF FIELD OPERATIONS  
STREETS AND SANITATION DIVISION**  
DEPUTY DIRECTOR OF FIELD OPERATIONS: JERRY WALKER, P.E.

DESIGN BY: HME, P.E.  
DRAWN BY: HME, P.E.  
CHECKED BY: CF

HORIZONTAL SCALE: 1:20  
VERTICAL SCALE: 1:2  
DATE: JUNE 2008

**EMPLOYEE PARKING LOT AND STORAGE AREA  
AT EAST YARD**

**FIRE LINE PROFILES**

TITLE: SHEET: 16 of 16

HANSEN # 28148 107V5059

CLV EMPLOYEE PARKING LOT AND STORAGE AREA AT EAST YARD(100%)