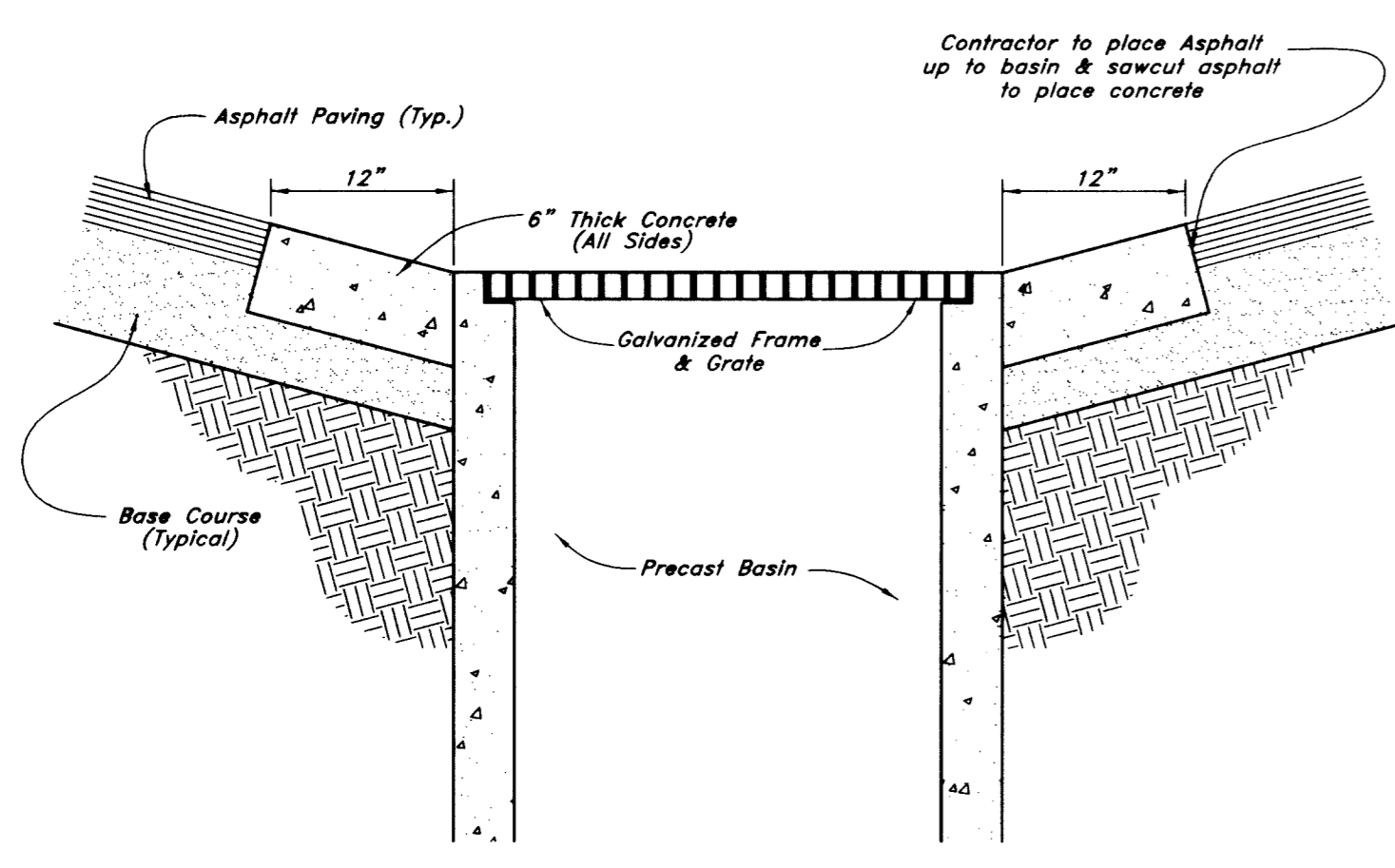
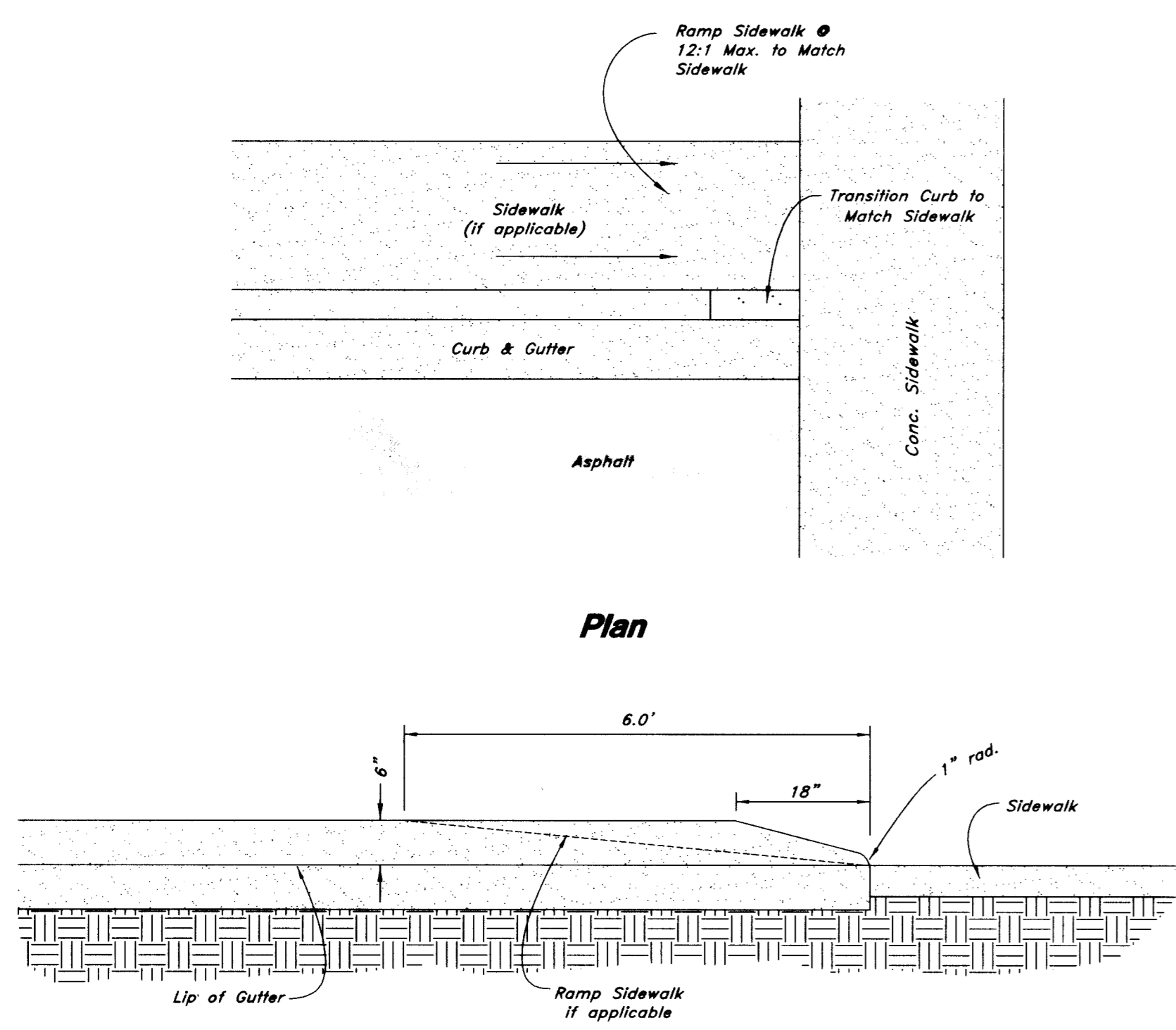


Notes:
 1. For Sidewalks - Expansion Joint shall be full depth of concrete. Set top of filler flush with surface of concrete. Expansion Joint spacing shall be 60' O.C.
 2. For Pavements - Expansion Joint shall be placed where pavement abuts a building wall, sidewalk, curb, gutter, or any structure such as catch basins, manholes, valves, etc. See detail B. The joint shall be installed per detail A.

19 Expansion Joint
 Not to Scale

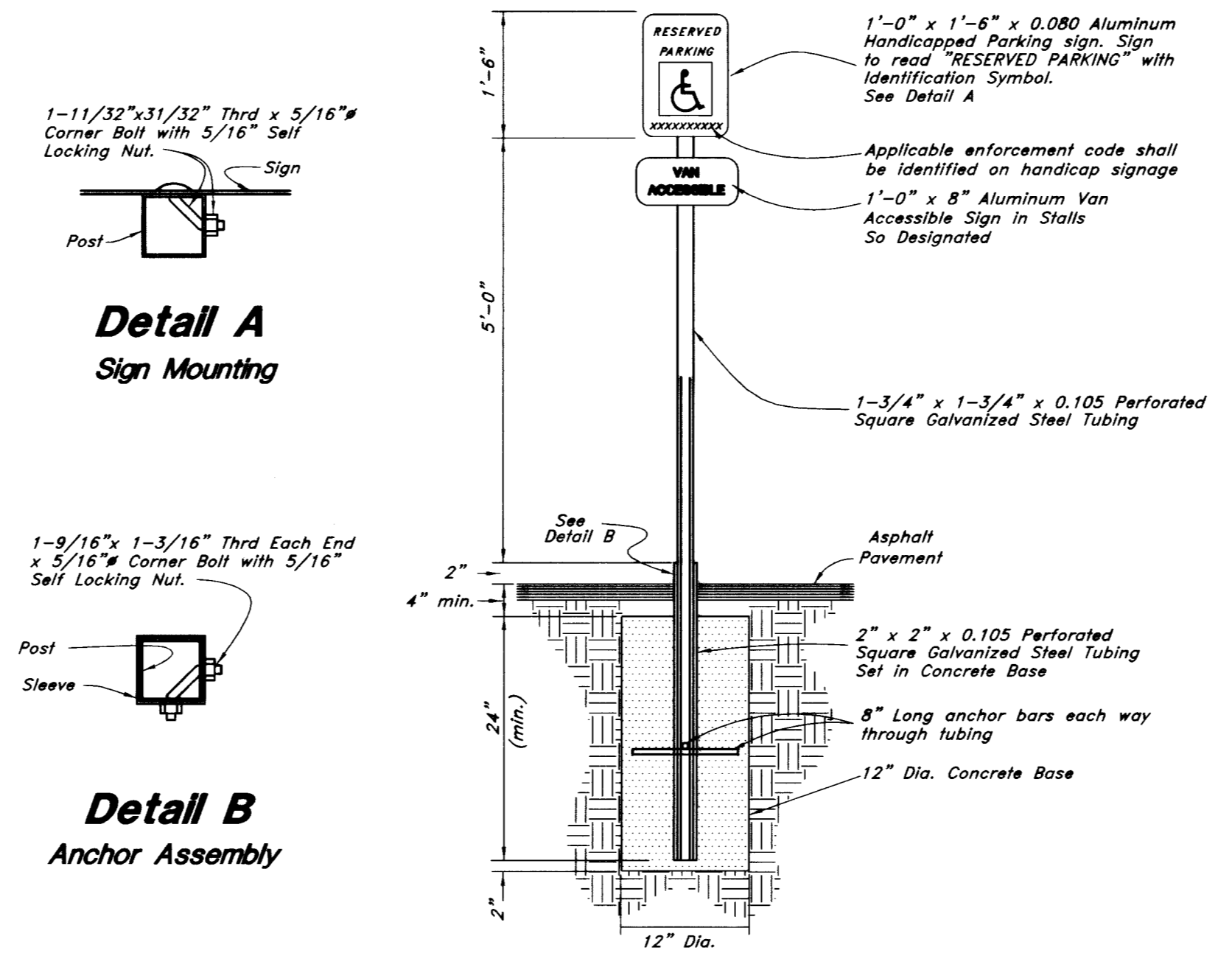


18 12" Concrete Collar
 Not to Scale

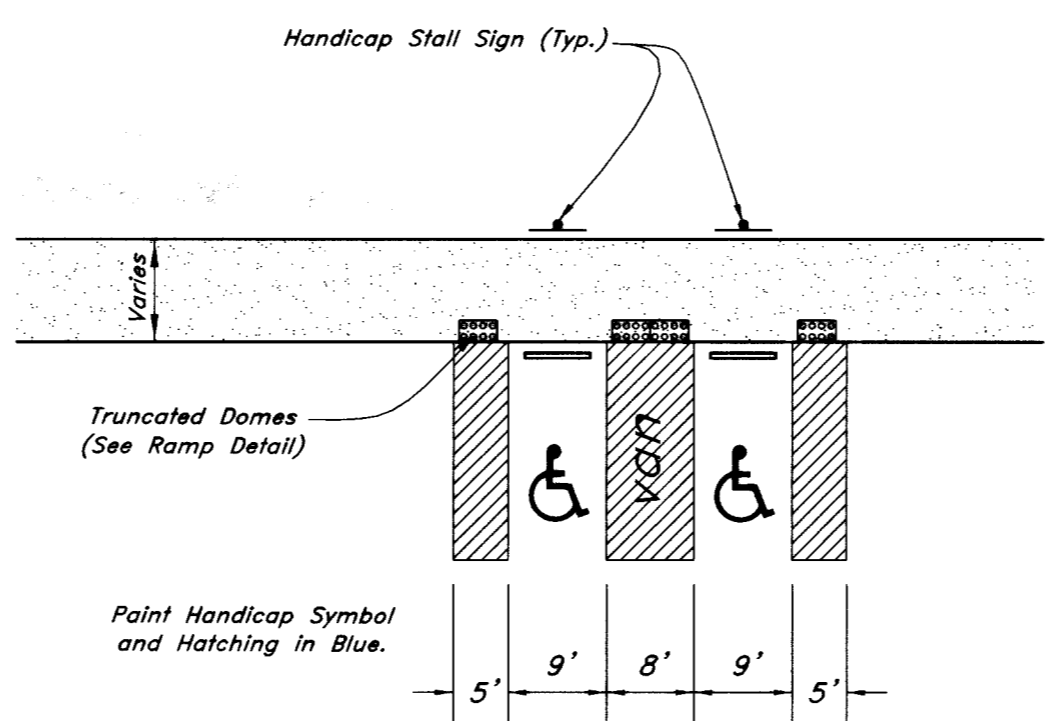


17 Curb Transition
 Not to Scale

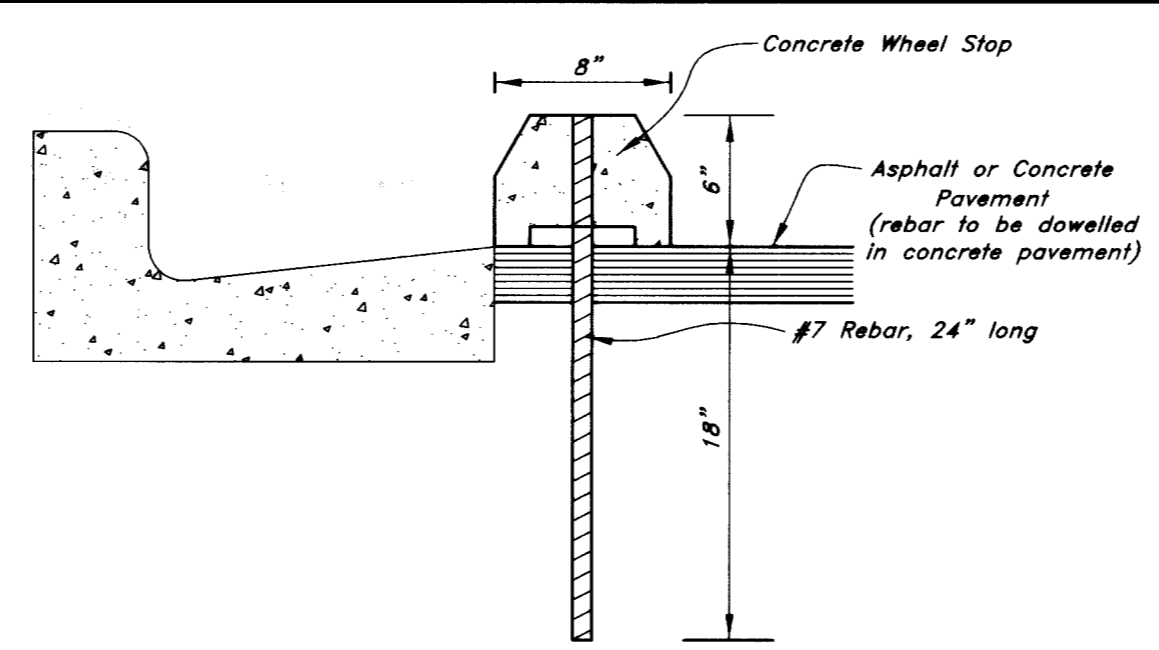
1109 87



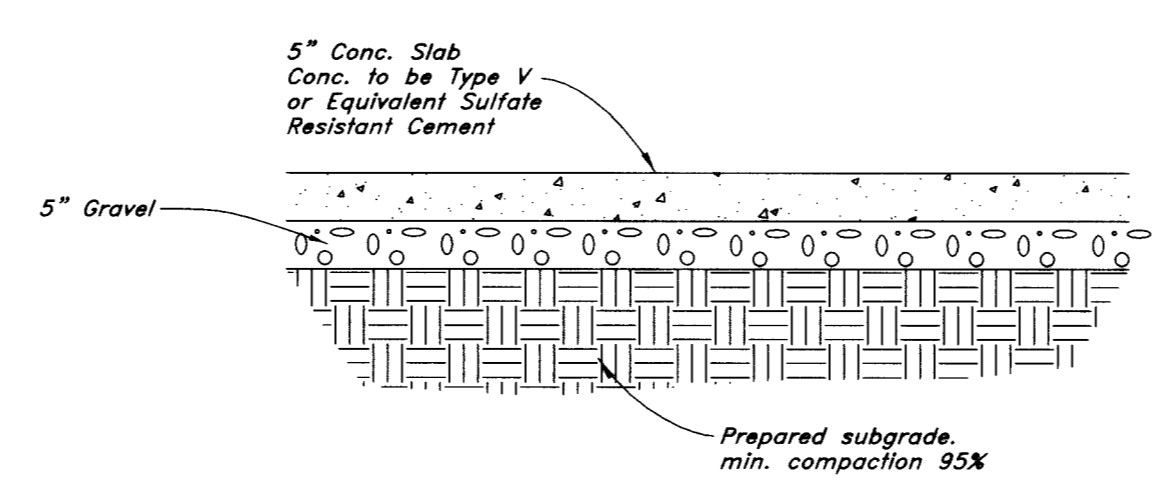
16 Handicap Parking Sign
 Not to Scale



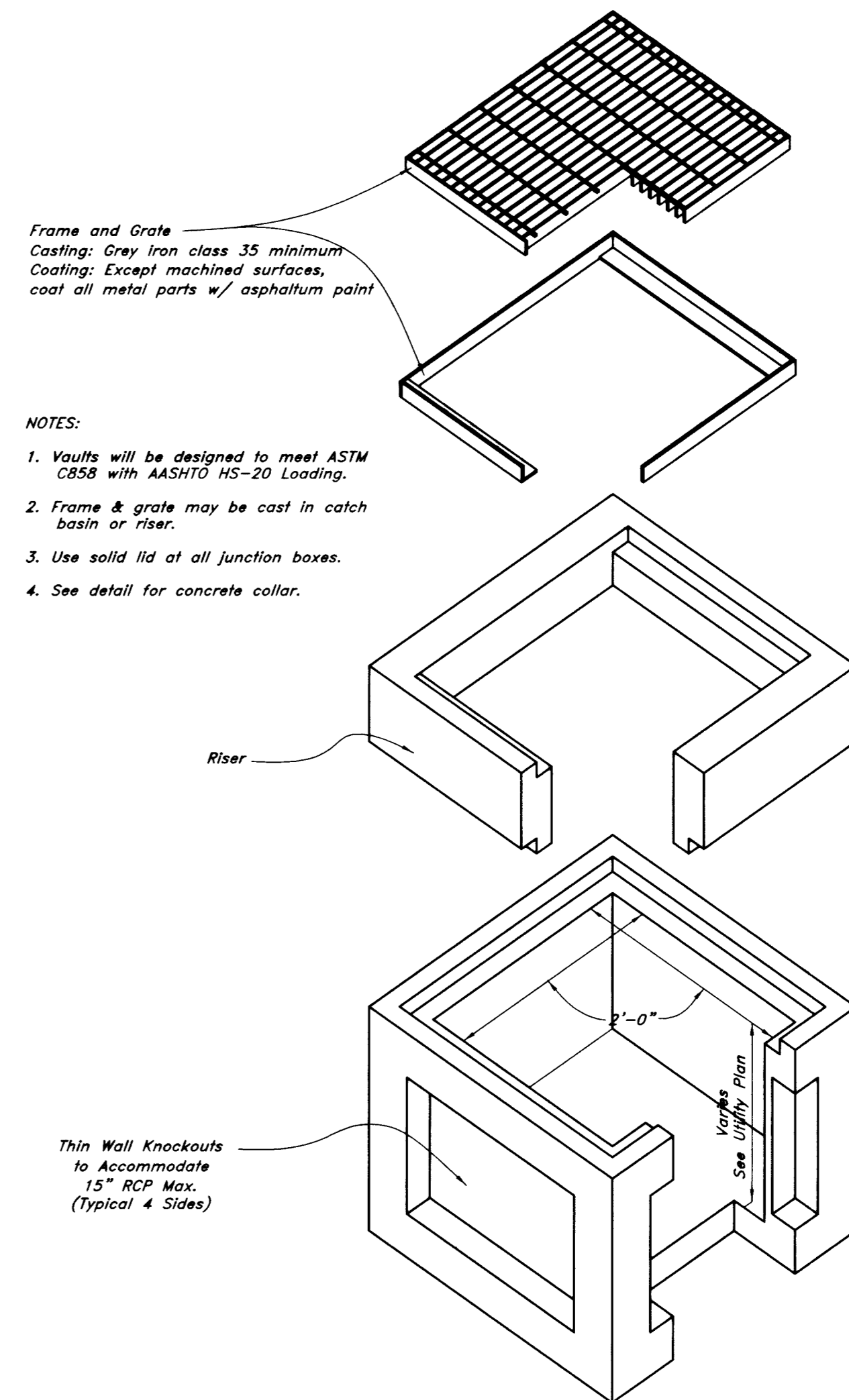
15 Typical Handicap Stall Detail
 Not to Scale



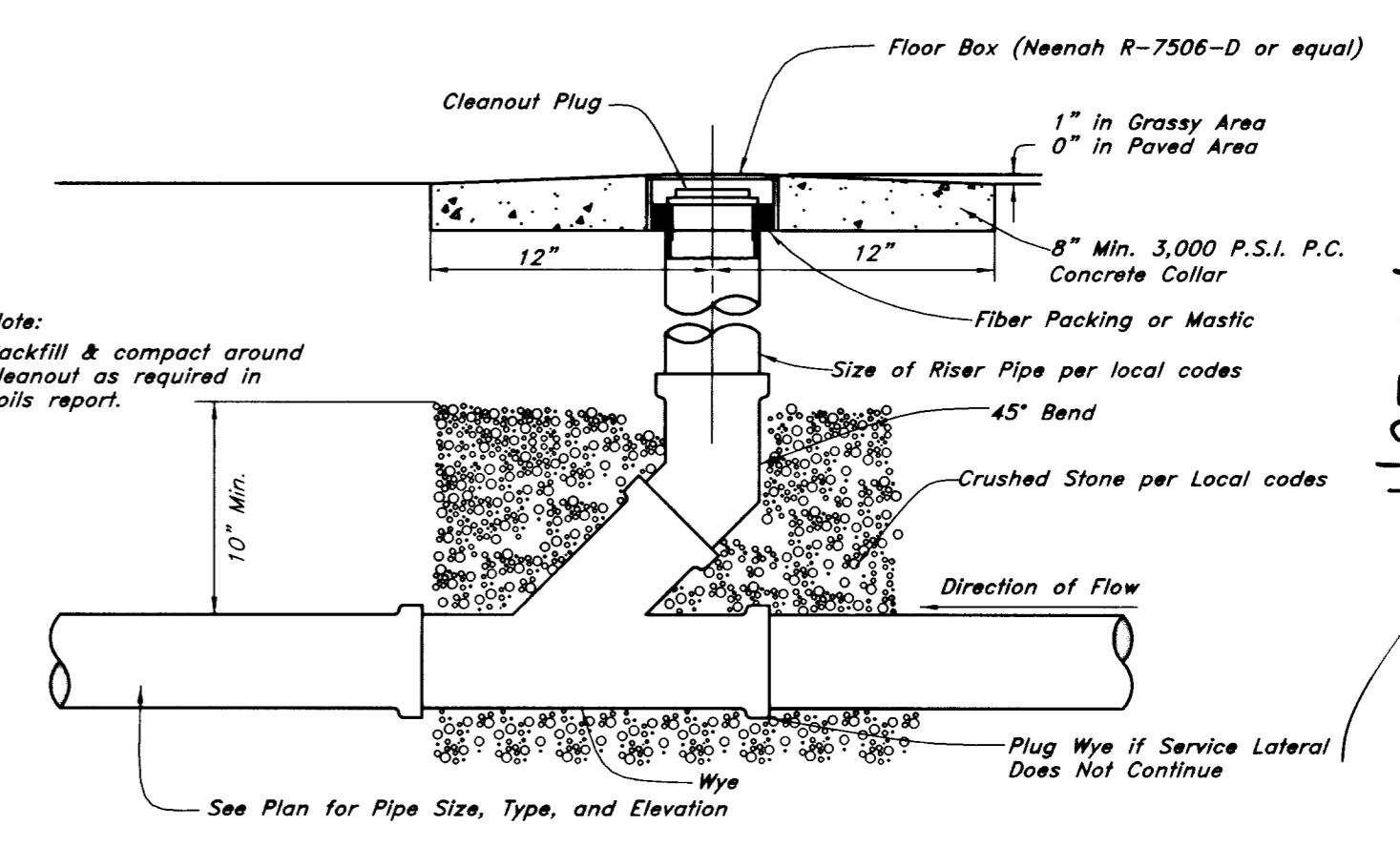
14 Typical Concrete Wheel Stop
 Not to Scale



13 Typical Concrete Pavement Section



12 On-Site Precast 24" x 24" Junction Box
 Not to Scale



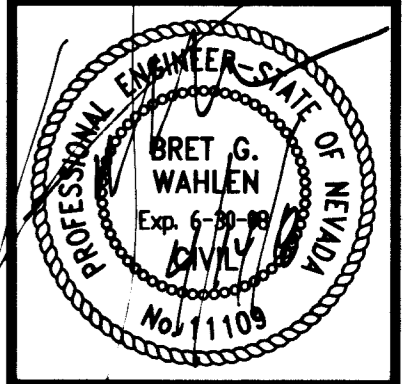
11 On-Site Cleanout Detail
 Not to Scale

NO.	DESCRIPTION	DATE	REV.

Designed by: JR
 Drafted by: HRS
 Client Name: KGA Architecture
 07-0980T

GREAT BASIN ENGINEERING - SOUTH
 CONSULTING ENGINEERS and LAND SURVEYORS
 2010 North Redwood Road, P.O. Box 16747
 Salt Lake City, Utah 84116
 Salt Lake City (801)521-8529 Ogden (801)394-7288 Fax (801)521-8951

Details
Dorrell Medical Office Building
 Grand Montecito Parkway & Dorrell Lane
 Las Vegas, Nevada



18 Mar, 2008

SHEET NO. **C5.2**
 12 of 15

107V5038