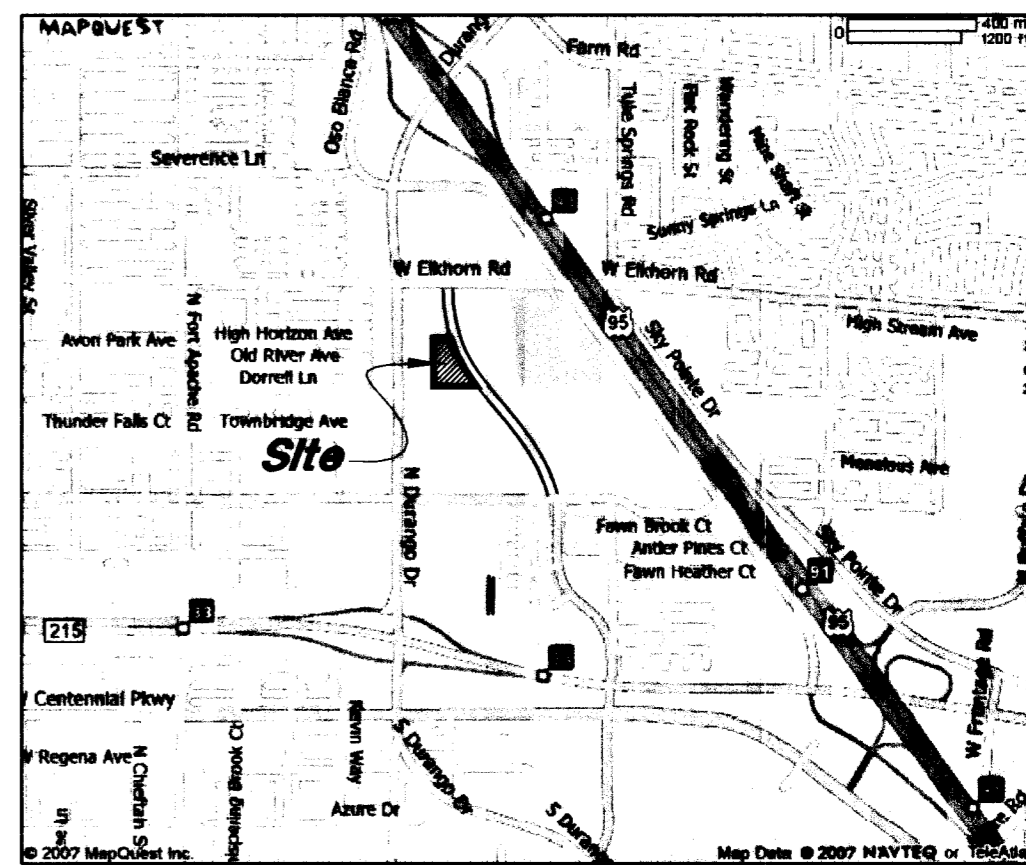




Scale : 1" = 30'



Vichity Map  
Not to Scale

**Legend**

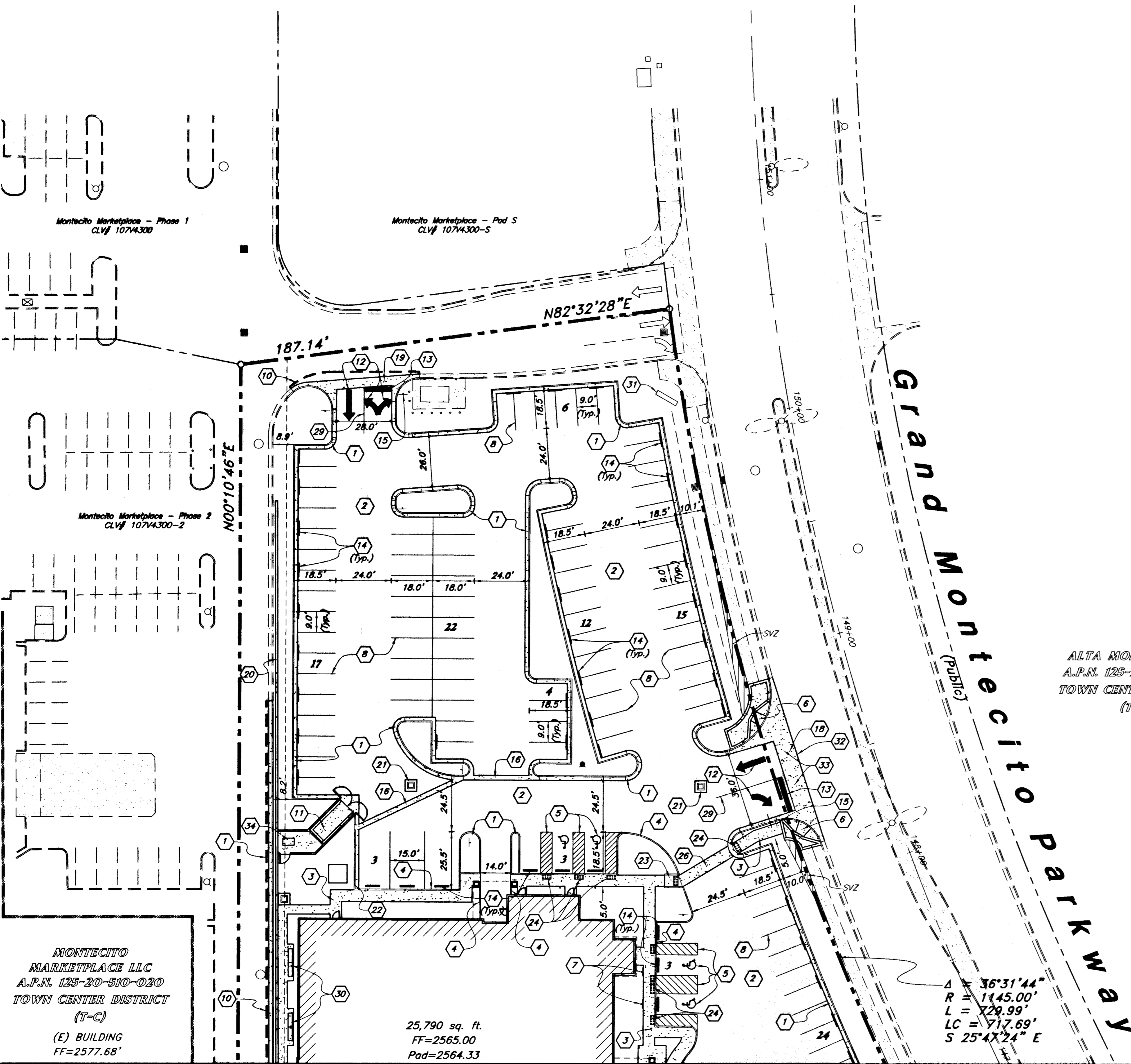
- Proposed Asphalt
- Existing Asphalt
- Proposed Concrete
- Existing Improvements
- Proposed Improvements
- Existing Inlet Box
- Proposed Inlet Box
- Exist. Catch Basin
- Catch Basin
- Proposed Manhole
- Existing Manhole
- Fire Hydrant
- Existing Fire Hydrant
- Existing Light Pole
- Proposed Light Pole
- Existing Street Light
- Proposed Street Light
- Proposed Fence
- Property Line
- Detail Number
- Sheet Number

**General Site Notes:**

1. Stalls designated as Accessible will require a painted Accessible symbol, sign, and wheel stop. (See Details)
2. Aisle markings, directional arrows and stop bars will be painted at each driveway as shown on the plans.
3. See Horizontal Control plan for coordinates, radii and detailed dimensions of site improvements.
4. Install a 36" Stop Sign at all driveways unless otherwise noted on plans.
5. All dimensions are to back of curb unless otherwise noted.

**Site Construction Notes**

- 1 Const. 24" Curb & Gutter
- 2 Const. Asphalt Paving
- 3 Const. Conc. Sidewalk
- 4 Const. "A" Curb per USD No. 219
- 5 Const. ADA Accessible Striping
- 6 Const. ADA Accessible Ramp (Modified) w/ Truncated Domes
- 7 Const. ADA Accessible Sign
- 8 Const. 4" White Paint Stripe (Typ.)
- 9 Const. Conc. Paving
- 10 Sawcut; Provide Smooth Clean Edge
- 11 Dumpster Enclosure (See Arch.)
- 12 Const. Directional Arrows per MUTCD
- 13 Const. 24" White Stop Bar
- 14 Const. Conc. Wheel Stop
- 15 Const. Stop Sign per MUTCD R1-1
- 16 Const. 24" Conc. Valley Gutter
- 17 Const. Drainage Channel
- 18 Const. 8" Cross Gutter per USD No. 228
- 19 Const. 4" Conc. Valley Gutter
- 20 Const. Solid Grouted 8" CMU Flood/Retaining Wall (See Structural Plans)
- 21 Const. 12" Conc. Collar
- 22 Const. Curb Transition
- 23 Const. ADA Accessible Ramp
- 24 Const. Truncated Domes
- 25 Remove Exist. Rip-Rap As Necessary
- 26 Const. 5" Conc. Paving
- 27 Const. 6" Bollards At 6' On Center
- 28 Const. 0" Curb & Gutter
- 29 Const. 4" Double Yellow Paint Stripe
- 30 Site Furniture (See Arch. Plans)
- 31 Sign
- 32 Match Conc. Cross Gutter to Existing A/C
- 33 Remove Exist. Sidewalk, Curb & Gutter and Landscaping for new Drive Approach
- 34 Generator Pad (See Arch. Plans)



ALTA MONTECITO LP  
A.P.N. 125-20-510-002  
TOWN CENTER DISTRICT  
(T-C)

$\Delta$  R = 36°31'44"  
R = 1145.00'  
L = 729.99'  
LC = 717.69'  
S 25°47'24" E

25,790 sq. ft.  
FF=2565.00  
Pod=2564.33

Match Line See Sheet C3.2

**PRIVATE ENGINEER'S NOTICE TO CONTRACTORS**  
The Contractor agrees that he shall assume sole and complete responsibility for job site conditions during the course of construction of this project, including safety of all persons and property; that this requirement shall apply continuously and not be limited to normal working hours; and that the contractor shall defend, indemnify, and hold the owner and the engineer harmless from any and all liability, real or alleged, in connection with the performance of work on this project, excepting for liability arising from the sole negligence of the owner or the engineer.

**ADA Note:**  
Contractor must maintain a running slope on Accessible routes no steeper than 1:20. The cross slope for Accessible routes must be no steeper than 1:48. All Accessible routes must have a minimum clear width of 36".

**Basis of Bearings**  
North 0°07'03" West being the West line of the Northwest Quarter (NW 1/4) of the Northeast Quarter (NE 1/4) of Section 20, Township 19 South, Range 60 East, M.D.M., Clark County, Nevada as shown on the Record of Survey File 145, Page 15, of Official Records on file in the Clark County, Nevada Recorder's Office.

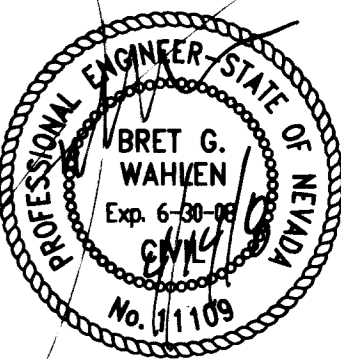
**Benchmark**  
City of Las Vegas Benchmark Book (12/2/2002) No. 0C90-21W6  
Being a rivet and square aluminum plate in top center of headwall on the west side of Highway 95 near mile marker 88.70.  
Elevation = 758.408 (meters) / 2481.65 (U.S. Survey feet)  
North American Vertical Datum of 1988

Call before you Dig.  
**"811"**  
1-702-227-2929  
NEVADA POWER ENVIRONMENT AND SAFETY SERVICES DEPARTMENT

Call before you Dig.  
**"811"**  
or  
1-800-227-2600  
UNDERGROUND SERVICES ALERT (USA)

**GREAT BASIN ENGINEERING - SOUTH**  
CONSULTING ENGINEERS and LAND SURVEYORS  
2010 North Redwood Road, P.O. Box 16747  
Salt Lake City, Utah 84116  
Salt Lake City (801)521-8828 Ogden (801)394-7288 Fax (801)521-9551

**Site Plan**  
**Dorrell Medical Office Building**  
Address  
Las Vegas, Nevada



18 Mar, 2008

SHEET NO.  
**C3.1**  
8 of 15

107V5038

110981

H27076