

DEVELOPER:
DECATUR COURT, LLC

10877 WILSHIRE BLVD.
SUITE 603
LOS ANGELES, CA 90024

PHONE: (210)208-7770
FAX: (310)208-7885

DESIGNED: TG
CHECKED: RG
NO. DATE

APP. BY

PROJ. NO.: SB06011
DWG. NAME: 06011-UT.DWG
DESCRIPTION

UTILITY PLAN
DECATUR COURT
ANN ROAD AND DECATUR BLVD.
NORTH LAS VEGAS CLARK COUNTY NEVADA

AMTI • SUNBELT
ENGINEERING • PLANNING • SURVEYING

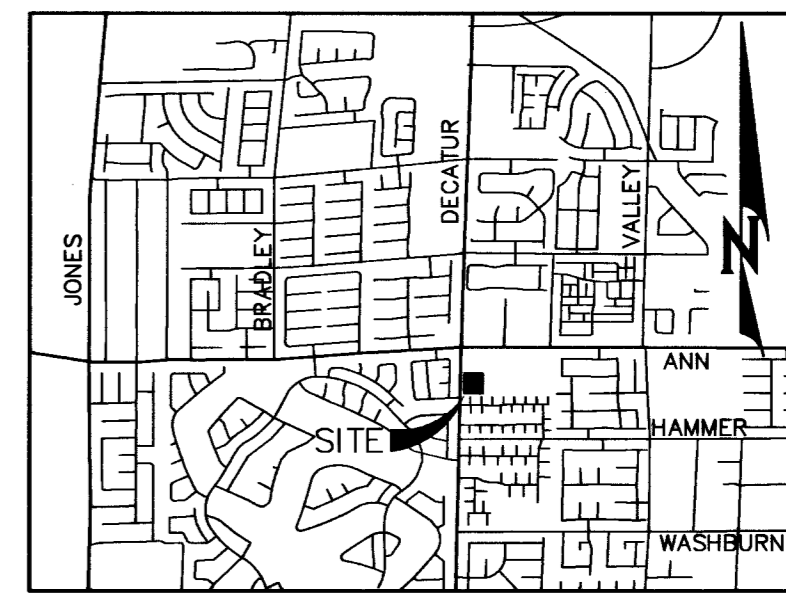
720 SUSANNA WAY
HENDERSON, NV 89011
(702) 242-9908
FAX (702) 242-9915

SHEET
C4
4 OF 7 SHEETS
ONLY# 29838

ONLY FIRE DEPT. FIRE FLOW DATA AND REQUIREMENTS

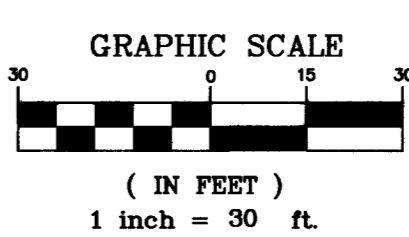
BUILDING HEIGHT (IN FEET)	BUILDING 1	BUILDING 2	BUILDING 3
35' MAX.	35' MAX.	35' MAX.	35' MAX.
FULLY AUTOMATED SPRINKLER SYSTEM (ASSUME 50% REDUCTION)	YES	YES	NO
OCCUPANCY:	M/B	M/S-1,B	M
TYPE OF CONSTRUCTION	TYPE V - B	TYPE V - B	TYPE V - B
NUMBER OF STORIES	1	1	1
BASED ON SQUARE FOOTAGE	6,719 Sq. Ft.	7,236 Sq. Ft.	4,336 Sq. Ft.
LARGEST AREA BETWEEN 4-HOUR SEPERATION WALLS	2	2	2
ESTIMATED FIRE FLOW REQUIREMENTS PER MINUTE AT 20 PSI RESIDUAL PRESSURE	1,688 gpm	1,688 gpm	1,750 gpm

REVIEWED AND VERIFIED BY: _____ DATE: _____



LEGEND

- SITE BOUNDARY/RIGHT-OF-WAY
- CENTERLINE
- DRAINAGE OR P.U.E. EASEMENT
- 8" SEWER
- PVC WATER
- PROPOSED SEWER
- PROPOSED WATER
- PROPOSED FIRE HYDRANT
- EXISTING FIRE HYDRANT
- BACK WATER VALVE
- 6" SEWER CLEANOUT
- FDC (FIRE DEPARTMENT CONNECTION)
- GATE VALVE
- TE
- RA
- RR
- TRASH ENCLOSURE
- ROOF ACCESS
- RISER ROOM
- FIRE ACCESS
- EXISTING AC
- PROPOSED AC



Call before you Dig
Avoid existing underground utilities.
Call 811

1-800-432-5300
CLARK COUNTY ONLY OPERATES
1-702-455-7544

Avoid overhead power line contact.
Call before you Overhead
1-702-227-2929
AVOID POWER CONTACT
(SEE SAFETY SERVICES SEPARATE)

NOTE:
ALL SANITARY SEWER MANHOLE BASES FOR NEW PIPE MUST BE PRECAST PER DESIGN AND CONSTRUCTION STANDARDS FOR WASTEWATER COLLECTION SYSTEMS PLATE SD-26

THE ON-SITE WATER AND SANITARY SEWER LINES AND APPURTENANCES ARE PRIVATE FACILITIES NOT TO BE OPERATED OR MAINTAINED BY THE CITY OF NORTH LAS VEGAS.

PRESSURE ZONE: 2430

CN.L.V. WATER SERVICE RULES AND REGULATIONS/ FIRE CODE REQUIREMENTS:

- TWO (2) SOURCES OF WATER SUPPLY ARE REQUIRED FOR ANY DEVELOPMENT WITH ANY COMBINATION OF MORE THAN THREE (3) FIRE HYDRANTS (INCLUDING PUBLIC AND PRIVATE OR FIRE SERVICES).
- ALL METERS TO BE INSTALLED IN THE ONLY WATER SYSTEM, INCLUDE DODD'S MUST BE COMPATIBLE WITH THE SENSES AMR PROTOCOL (A.K.A. INVENSY) AND MUST BE INSTALLED WITH THE ENCODED REGISTER. METERS THAT ARE FULLY COMPATIBLE ARE: SENSUS ECR/INVENSY ECR/AMP MODELS (5/8" AND LARGER) NEPTUNE AUTOREAD MODELS (3" AND LARGER)
- NOTE:**
1.) ALL WATER FACILITIES CONSTRUCTED SHALL BE IN ACCORDANCE WITH THE "UNIFORM DESIGN AND CONSTRUCTION STANDARDS FOR WATER DISTRIBUTION SYSTEMS" (UDACS), LATEST EDITION.
2.) THE ON-SITE SEWER AND WATER LINES AND APPURTENANCES ARE PRIVATE FACILITIES NOT TO BE OPERATED OR MAINTAINED BY THE CITY OF NORTH LAS VEGAS.

NORTH LAS VEGAS BENCHMARK

REF. NO. 26
BENCHMARK NAME: NLV9131M
RIVET AND 2" ROUND ALUMINUM DISK, STAMPED NORTH LAS VEGAS BM NO. NLV9131M4, SET IN THE TOP OF CURB, LOCATED APPROX. 14' WEST OF THE SOUTHWEST WEST BOR AT THE INTERSECTION OF ANN RD. AND VALLEY DRIVE.

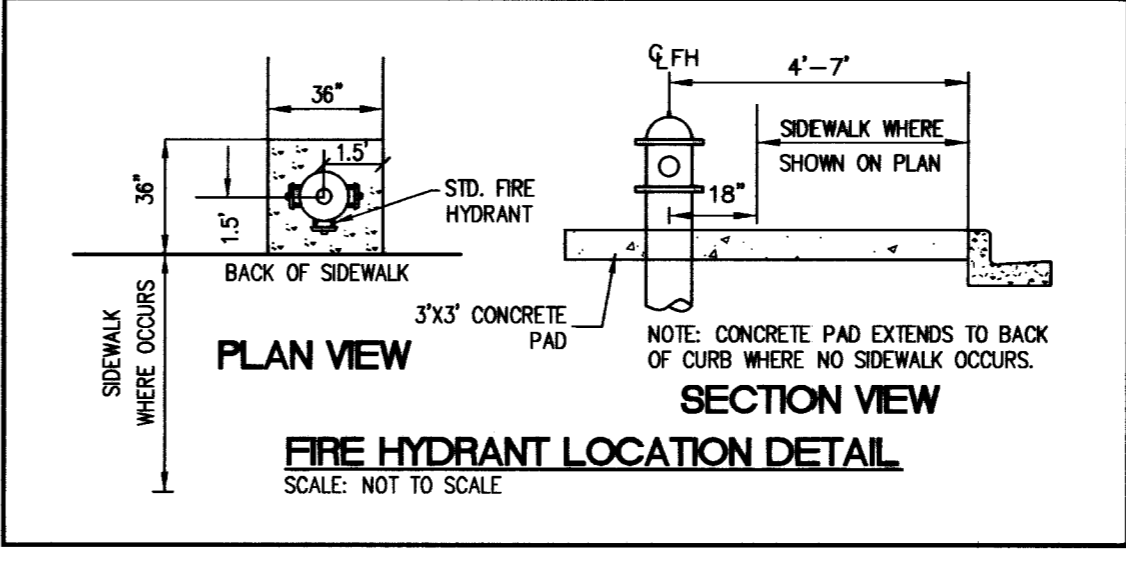
BASIS OF BEARINGS

SOUTH 01°06'46" WEST BEING THE WEST LINE OF THE NORTHWEST QUARTER (NW 1/4) SECTION 31, TOWNSHIP 19 SOUTH, RANGE 61 EAST, M.D.M., AS SHOWN IN FILE 106, ON PAGE 62 ON FILE IN THE OFFICE OF THE CLARK COUNTY RECORDER, CLARK COUNTY, NEVADA.

APPROVAL

ONLY UTILITIES DEPARTMENT - ENGINEERING SERVICES DIVISION DATE
APPROVAL OF THESE PLANS SHALL NOT BE CONSIDERED TO BE A PERMIT FOR CONSTRUCTION, A COMMITMENT TO SUPPLY WATER SERVICE AND/OR SEWER OR AN APPROVAL OF ANY VIOLATION OF ONLY WATER AND/OR SEWER SERVICE RULES AND REGULATIONS OR DESIGN AND CONSTRUCTION STANDARDS.

ONLY FIRE DEPARTMENT DATE
H#23781 107V4956



WATER METERING REQUIREMENTS FOR NEW DEVELOPMENTS

- SEPARATE DOMESTIC AND FIRE SERVICES (WHERE APPLICABLE) ARE REQUIRED FOR EACH DWELLING UNIT, PUBLIC, QUASI-PUBLIC, COMMERCIAL, AND/OR INDUSTRIAL OCCUPANCY LOCATED ON A SINGLE PARCEL OR LOT.
- IN THE EVENT THAT A BUILDING WITHIN AN INDUSTRIAL OR COMMERCIAL SUBDIVISION IS DIVIDED, SEPARATE DOMESTIC SERVICES ARE REQUIRED FOR EACH UNIT.
- EACH PARCEL OR LOT OF A COMMERCIAL OR RESIDENTIAL SUBDIVISION WILL HAVE A MINIMUM OF ONE (1) METROED DOMESTIC SERVICE. WHEN A FIRE SERVICE IS REQUIRED, EACH PARCEL OR LOT WILL HAVE A MINIMUM OF ONE (1) FIRE SERVICE. THE CITY, AT ITS OPTION, MAY ALLOW A COMMUNAL FIRE SERVICE PROVIDED THE PROPERTY OWNERS FIRST ESTABLISH A PROPERTY MANAGEMENT ASSOCIATION WHICH ACCEPTS RESPONSIBILITY FOR THE PAYMENT OF WATER BILLS AND THE MAINTENANCE AND OPERATIONS OF THE FIRE LINES AND BACKFLOW PREVENTION ASSEMBLY.

CITY OF NORTH LAS VEGAS UTILITY DEPARTMENT DISCLAIMER

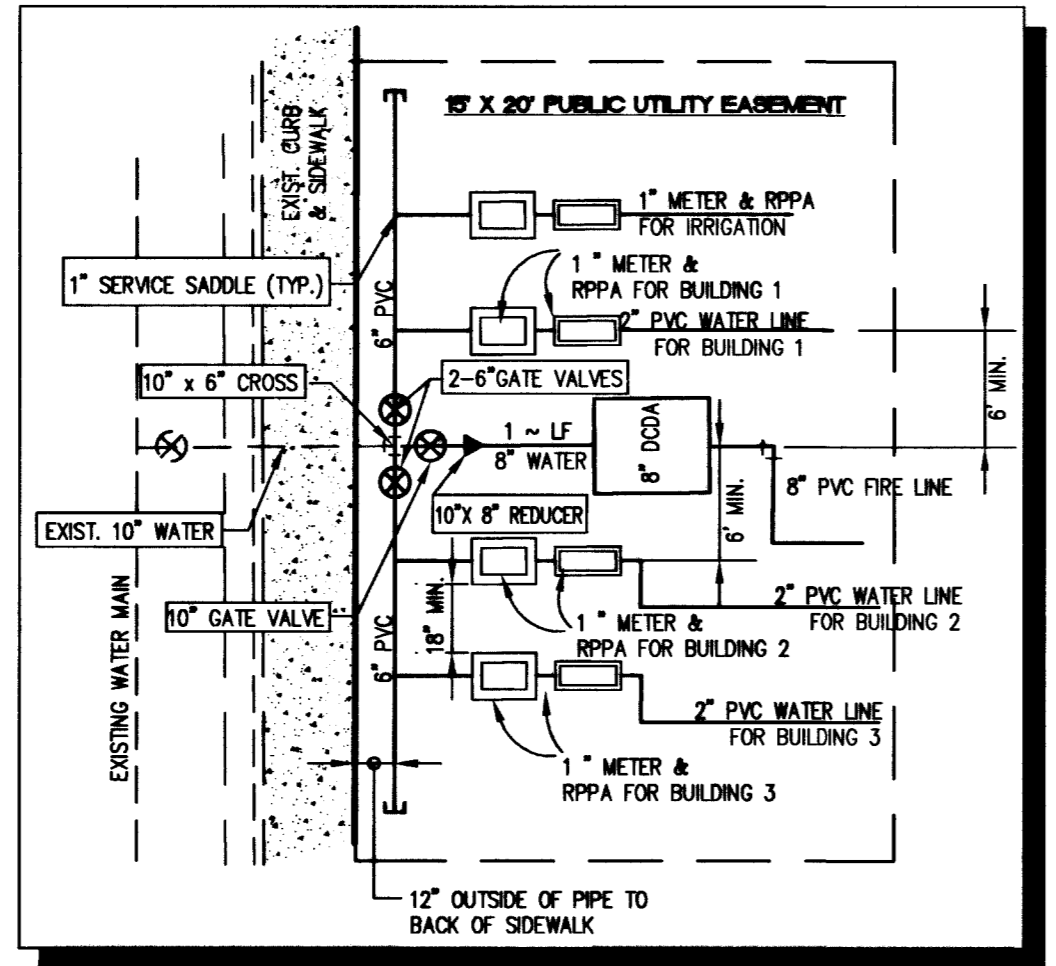
A STATEMENT OF UNDERSTANDING BETWEEN THE CITY OF NORTH LAS VEGAS UTILITY DEPARTMENT (CITY) AND ANY AND ALL SUBSEQUENT USERS OF INFORMATION OBTAINED HEREFROM:

THE PLANS AND SUPPORTING INFORMATION IS FURNISHED BY THE CITY, AND IS ACCEPTED/USED BY THE RECIPIENT WITH THE UNDERSTANDING THE CITY MAKES NO WARRANTIES, EXPRESS OR IMPLIED, CONCERNING THE ACCURACY, COMPLETENESS, RELIABILITY, OR SUITABILITY OF SAID PLANS OR ANY SUPPORTING DATA AND FURTHER UNDERSTANDS THAT ALL USERS ARE ACTING AT THEIR OWN RISK.

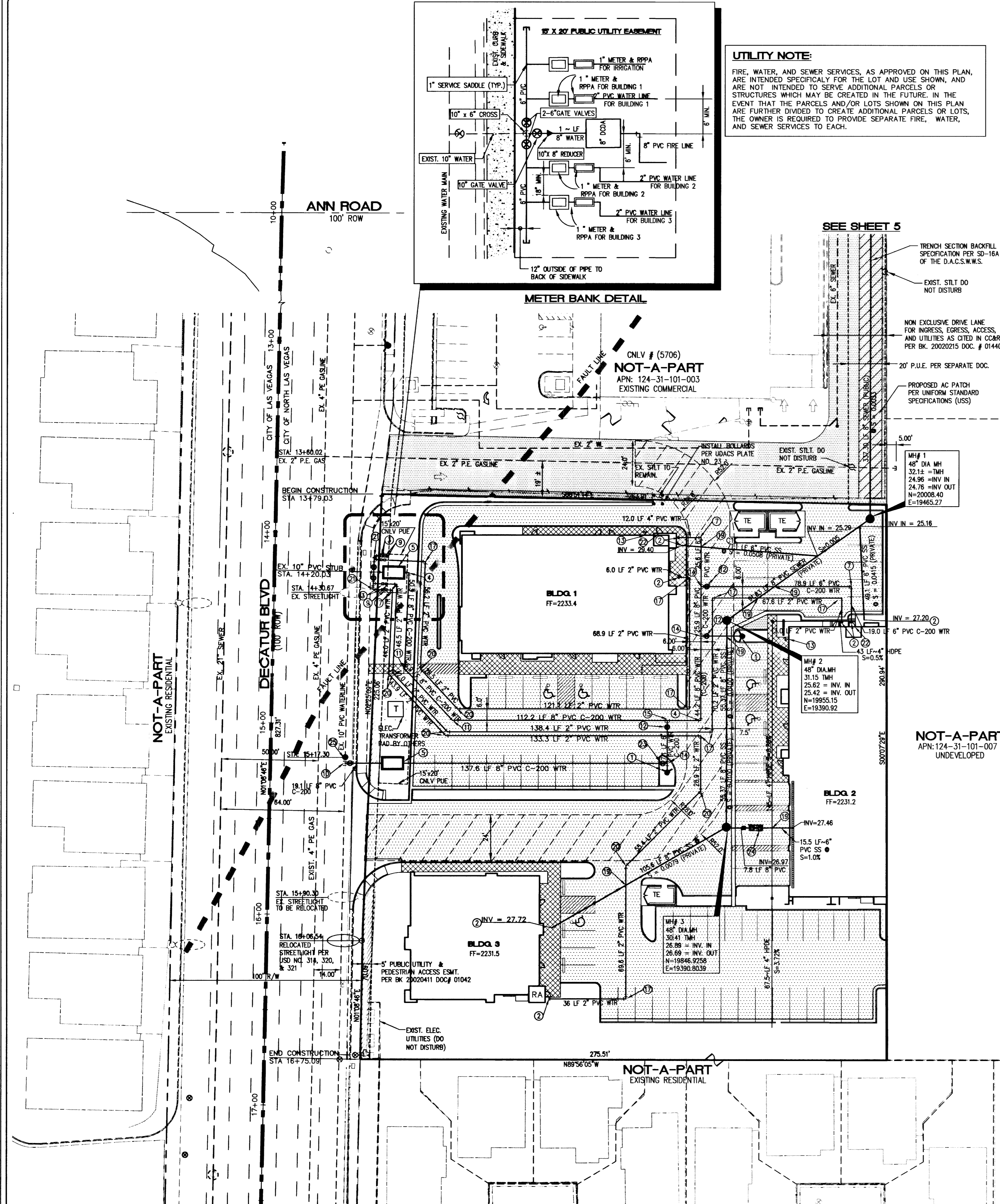
THE CITY SHALL BE UNDER NO LIABILITY WHATSOEVER RESULTING FROM ANY USE OF THIS INFORMATION. THIS INFORMATION SHOULD NOT BE RELIED UPON AS THE SOLE BASIS FOR EXISTING WATER AND/OR SEWER LOCATIONS. THE ENGINEER SHALL CHECK AND VERIFY ALL DIMENSIONS AND LOCATIONS OF EXISTING UTILITIES.

UTILITY NOTE:

FIRE, WATER, AND SEWER SERVICES, AS APPROVED ON THIS PLAN, ARE INTENDED SPECIFICALLY FOR THE LOT AND USE SHOWN, AND ARE NOT INTENDED TO SERVE ADDITIONAL PARCELS OR STRUCTURES WHICH MAY BE CREATED IN THE FUTURE. IN THE EVENT THAT THE PARCELS AND/OR LOTS SHOWN ON THIS PLAN ARE FURTHER DIVIDED TO CREATE ADDITIONAL PARCELS OR LOTS, THE OWNER IS REQUIRED TO PROVIDE SEPARATE FIRE, WATER, AND SEWER SERVICES TO EACH.



SEE SHEET 5



UTILITY DISCLAIMER NOTE:
UTILITY LOCATIONS SHOWN HEREON ARE APPROXIMATE ONLY. IT SHALL BE THE CONTRACTOR'S RESPONSIBILITY TO DETERMINE THE EXACT HORIZONTAL AND VERTICAL LOCATION OF ALL EXISTING UNDERGROUND OR OVERHEAD UTILITIES PRIOR TO COMMENCING CONSTRUCTION. NO REPRESENTATION IS MADE THAT ALL EXISTING UTILITIES ARE SHOWN HEREON. THE ENGINEER ASSUMES NO RESPONSIBILITY FOR UTILITIES NOT SHOWN OR UTILITIES SHOWN IN THEIR PROPER LOCATION. CONTRACTOR TO NOTIFY ENGINEER OF ANY CHANGES OR DISCREPANCIES.