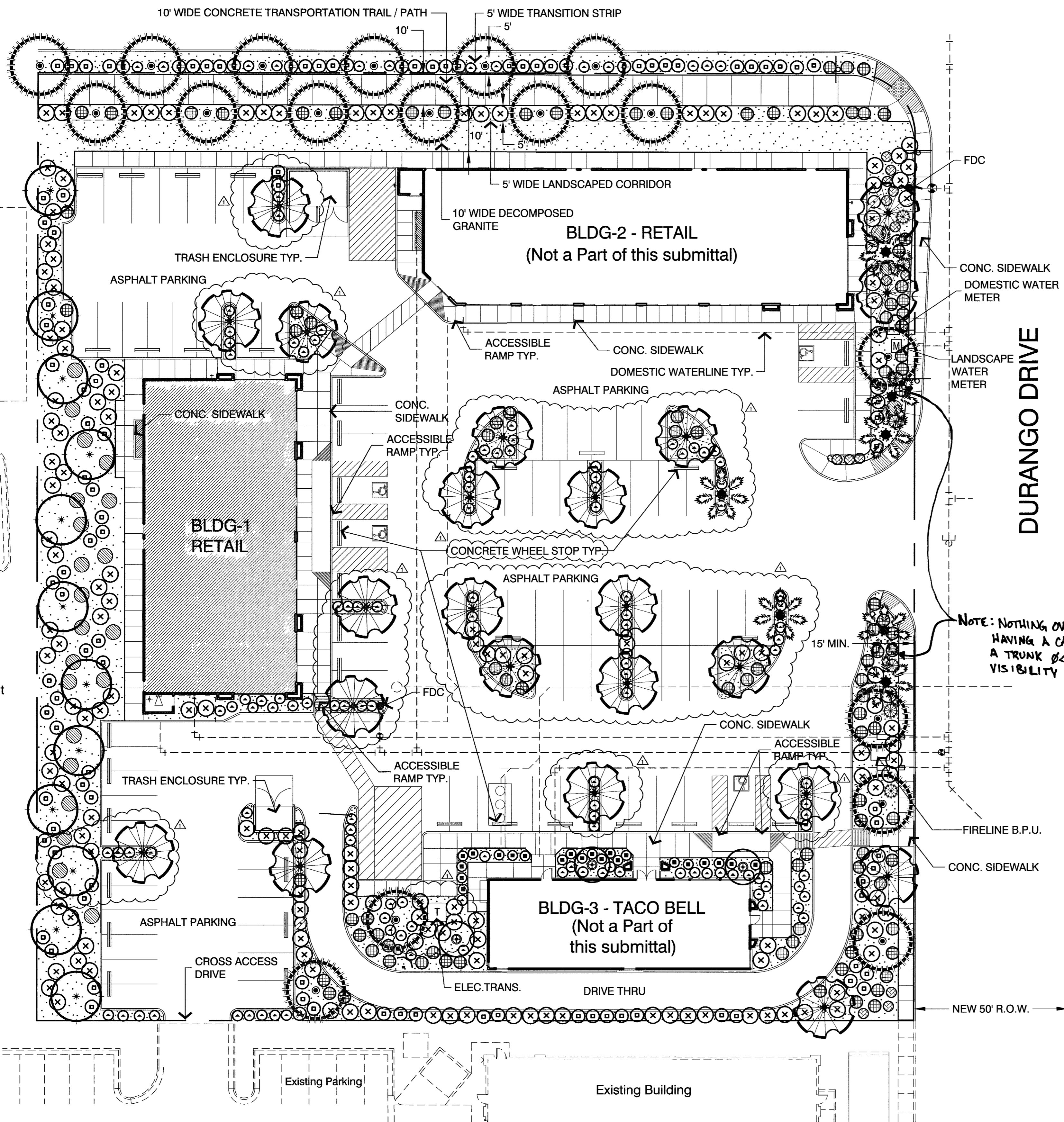


ACKERMAN AVENUE

PLANT LIST

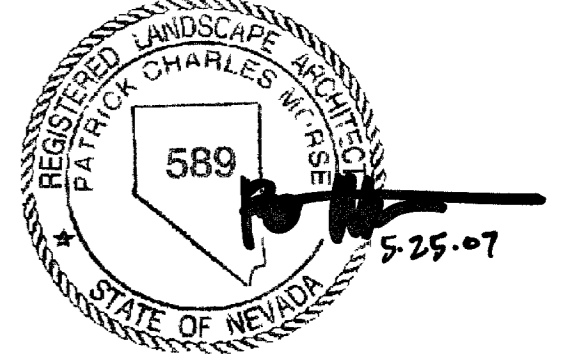


SYMBOL	BOTANICAL NAME COMMON NAME	SIZE QUAN.	REMARKS
(*)	Pinus Brutia Eldarica Mondel Pine	24" Box 12	10' Ht., 8' So., 2 1/2" Cal.
(*)	Fraxinus Velutina Fan-Tex Ash	24" Box 18	10' Ht., 4' Sp., 1 1/2" Cal.
(*)	Pyrus Kawakamii Evergreen Pear	24" Box 22	9' Ht., 4' Sp., 1 1/2" Cal.
(*)	Washingtonia Robusta Mexican Fan Palm	18'-20' Ht. 7	Trunk Ht. Skinned
(*)	Prunus Cerasifera 'Atropurpurea' Purple-Leaf Plum	24" Box 3	8' Ht., 4' Sp., 1' Cal.
(X)	Nerium Oleander 'Petite Salmon' Dwarf Salmon Oleander	5 gal. 159	
(O)	Senna Nemophylla Green Cassia	5 gal. 107	
(*)	Lantana Montivdensis Purple Trailing Lantana	1 gal. 14	
(*)	Hesperaloe Parvifolia Red Yucca	5 gal. 7	
(*)	Caesalpinia Pulcherrima Red Bird of Paradise	5 gal. 4	
(*)	Lantana x 'New Gold' New Gold Lantana	1 gal. 99	
(*)	Rosmarinus Officinalis 'Prostratus' Prostrate Rosemary	1 gal. 24	
(*)	Myrtus Communis 'Compacta' Compact Myrtle	5 gal. 135	
(*)	Ilex Vomitoria 'Stokes' Dwarf Yaupon Holly	5 gal. 22	

NOTE: NOTHING OVER 2'-0" TALL OR HAVING A CANOPY < 7'-0" AND A TRUNK Ø < 2" WITHIN SIGHT VISIBILITY ZONE

DECOMPOSED GRANITE - 1/2" Screened, 2" minimum thickness in all planting areas, 'Mohave Gold' color or equal.

SEE SHEET L3 FOR PLANTING DETAILS

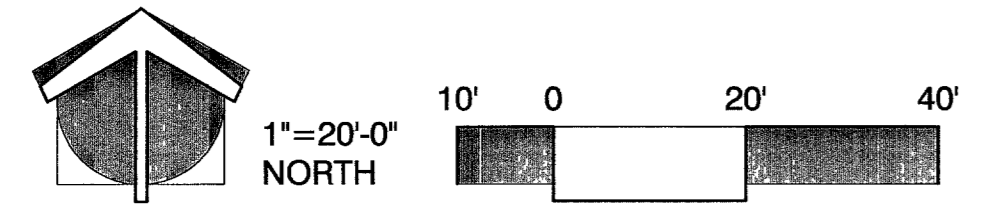
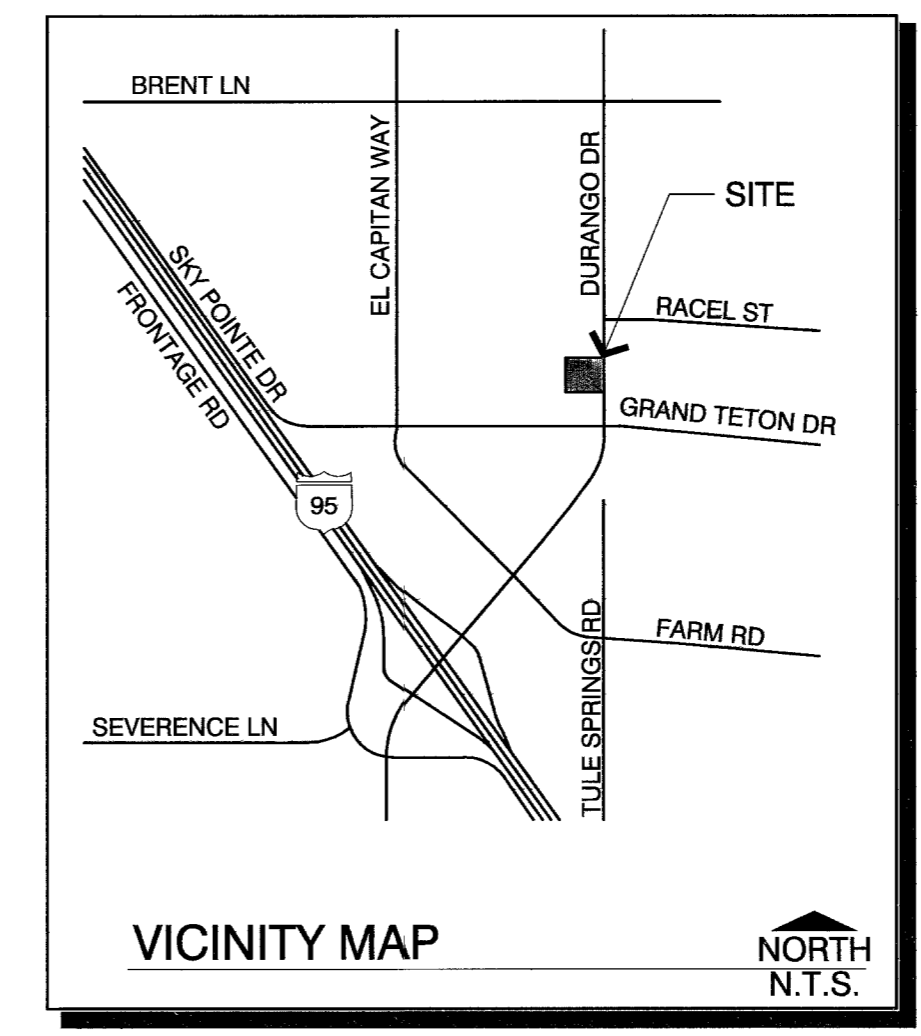


Jeff Looker
Architect
2070 E. SOUTHERN AVE.
TEMPE, ARIZONA 85282

MLA Associates
LANDSCAPE ARCHITECTS
2101 East Broadway Road #35 Tempe, AZ 85282
OFFICE 480-777-0150 FAX 480-777-0152
MLA Associates Landscape Architects, Incorporated

Retail Building #1
8033 N. DURANGO DRIVE
LAS VEGAS, NEVADA

PROJECT # 2006-68
DATE APRIL 11, 2007
REVISION APRIL 4, 2007 CITY COMMENTS



Plotted on May 25, 2007 - J:\Nework\Looker-Coppell\Retail-Bldgs-Durango-GrandTeton\06-480-777-0152-480-777-0152.dwg