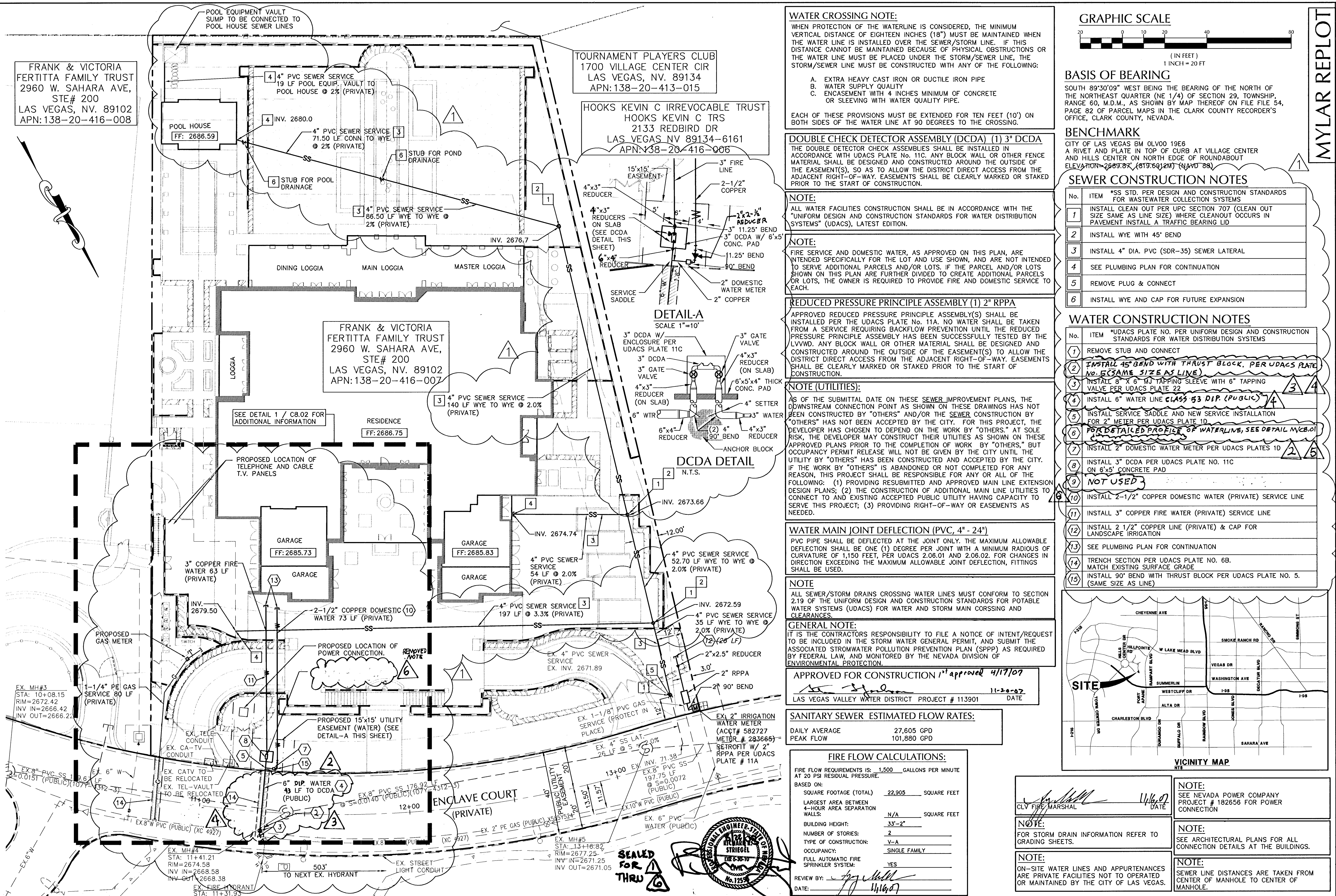


FRANK & VICTORIA  
FERTITTA FAMILY TRUST  
2960 W. SAHARA AVE,  
STE # 200  
LAS VEGAS, NV. 89102  
APN: 138-20-416-008

TOURNAMENT PLAYERS CLUB  
1700 VILLAGE CENTER CIR  
LAS VEGAS, NV. 89134  
APN: 138-20-413-015

HOOKS KEVIN C IRREVOCABLE TRUST  
HOOKS KEVIN C TRS  
2133 REDBIRD DR  
LAS VEGAS NV 89134-6161  
APN: 138-20-416-006

FRANK & VICTORIA  
FERTITTA FAMILY TRUST  
2960 W. SAHARA AVE,  
STE # 200  
LAS VEGAS, NV. 89102  
APN: 138-20-416-007



**WATER CROSSING NOTE:**  
WHEN PROTECTION OF THE WATERLINE IS CONSIDERED, THE MINIMUM VERTICAL DISTANCE OF EIGHTEEN INCHES (18") MUST BE MAINTAINED WHEN THE WATER LINE IS INSTALLED OVER THE SEWER/STORM LINE. IF THIS DISTANCE CANNOT BE MAINTAINED BECAUSE OF PHYSICAL OBSTRUCTIONS OR THE WATER LINE MUST BE PLACED UNDER THE SEWER/STORM LINE, THE STORM/SEWER LINE MUST BE CONSTRUCTED WITH ANY OF THE FOLLOWING:  
A. EXTRA HEAVY CAST IRON OR DUCTILE IRON PIPE  
B. WATER SUPPLY QUALITY  
C. ENCASEMENT WITH 4 INCHES MINIMUM OF CONCRETE OR SLEEVING WITH WATER QUALITY PIPE.  
EACH OF THESE PROVISIONS MUST BE EXTENDED FOR TEN FEET (10') ON BOTH SIDES OF THE WATER LINE AT 90 DEGREES TO THE CROSSING.

**DOUBLE CHECK DETECTOR ASSEMBLY (DCDA) (1) 3" DCDA**  
THE DOUBLE DETECTOR CHECK ASSEMBLIES SHALL BE INSTALLED IN ACCORDANCE WITH UDACS PLATE NO. 11C. ANY BLOCK WALL OR OTHER FENCE MATERIAL SHALL BE DESIGNED AND CONSTRUCTED AROUND THE OUTSIDE OF THE EASEMENT(S), SO AS TO ALLOW THE DISTRICT DIRECT ACCESS FROM THE ADJACENT RIGHT-OF-WAY. EASEMENTS SHALL BE CLEARLY MARKED OR STAKED PRIOR TO THE START OF CONSTRUCTION.

**NOTE:**  
ALL WATER FACILITIES CONSTRUCTION SHALL BE IN ACCORDANCE WITH THE "UNIFORM DESIGN AND CONSTRUCTION STANDARDS FOR WATER DISTRIBUTION SYSTEMS" (UDACS), LATEST EDITION.

**NOTE:**  
FIRE SERVICE AND DOMESTIC WATER, AS APPROVED ON THIS PLAN, ARE INTENDED SPECIFICALLY FOR THE LOT AND USE SHOWN, AND ARE NOT INTENDED TO SERVE ADDITIONAL PARCELS AND/OR LOTS. IF THE PARCEL AND/OR LOTS SHOWN ON THIS PLAN ARE FURTHER DIVIDED TO CREATE ADDITIONAL PARCELS OR LOTS, THE OWNER IS REQUIRED TO PROVIDE FIRE AND DOMESTIC SERVICE TO EACH.

**REDUCED PRESSURE PRINCIPLE ASSEMBLY (1) 2" RPPA**  
APPROVED REDUCED PRESSURE PRINCIPLE ASSEMBLY(S) SHALL BE INSTALLED PER THE UDACS PLATE NO. 11A. NO WATER SHALL BE TAKEN FROM A SERVICE REQUIRING BACKFLOW PREVENTION UNTIL THE REDUCED PRESSURE PRINCIPLE ASSEMBLY HAS BEEN SUCCESSFULLY TESTED BY THE LVWD. ANY BLOCK WALL OR OTHER MATERIAL SHALL BE DESIGNED AND CONSTRUCTED AROUND THE OUTSIDE OF THE EASEMENT(S) TO ALLOW THE DISTRICT DIRECT ACCESS FROM THE ADJACENT RIGHT-OF-WAY. EASEMENTS SHALL BE CLEARLY MARKED OR STAKED PRIOR TO THE START OF CONSTRUCTION.

**NOTE (UTILITIES):**  
AS OF THE SUBMITTAL DATE ON THESE SEWER IMPROVEMENT PLANS, THE DOWNSTREAM CONNECTION POINT AS SHOWN ON THESE DRAWINGS HAS NOT BEEN CONSTRUCTED BY "OTHERS" AND/OR THE SEWER CONSTRUCTION BY "OTHERS" HAS NOT BEEN ACCEPTED BY THE CITY. FOR THIS PROJECT, THE DEVELOPER HAS CHOSEN TO DEPEND ON THE WORK BY "OTHERS." AT SOLE RISK, THE DEVELOPER MAY CONSTRUCT THEIR UTILITIES AS SHOWN ON THESE APPROVED PLANS PRIOR TO THE COMPLETION OF WORK BY "OTHERS," BUT OCCUPANCY PERMIT RELEASE WILL NOT BE GIVEN BY THE CITY UNTIL THE UTILITY BY "OTHERS" HAS BEEN CONSTRUCTED AND ACCEPTED BY THE CITY. IF THE WORK BY "OTHERS" IS ABANDONED OR NOT COMPLETED FOR ANY REASON, THIS PROJECT SHALL BE RESPONSIBLE FOR ANY OR ALL OF THE FOLLOWING: (1) PROVIDING RESUBMITTED AND APPROVED MAIN LINE EXTENSION DESIGN PLANS; (2) THE CONSTRUCTION OF ADDITIONAL MAIN LINE UTILITIES TO CONNECT TO AND EXISTING ACCEPTED PUBLIC UTILITY HAVING CAPACITY TO SERVE THIS PROJECT; (3) PROVIDING RIGHT-OF-WAY OR EASEMENTS AS NEEDED.

**WATER MAIN JOINT DEFLECTION (PVC, 4" - 24")**  
PVC PIPE SHALL BE DEFLECTED AT THE JOINT ONLY. THE MAXIMUM ALLOWABLE DEFLECTION SHALL BE ONE (1) DEGREE PER JOINT WITH A MINIMUM RADIUS OF CURVATURE OF 1,150 FEET, PER UDACS 2.06.01 AND 2.06.02. FOR CHANGES IN DIRECTION EXCEEDING THE MAXIMUM ALLOWABLE JOINT DEFLECTION, FITTINGS SHALL BE USED.

**NOTE**  
ALL SEWER/STORM DRAINS CROSSING WATER LINES MUST CONFORM TO SECTION 2.19 OF THE UNIFORM DESIGN AND CONSTRUCTION STANDARDS FOR POTABLE WATER SYSTEMS (UDACS) FOR WATER AND STORM MAIN CROSSING AND CLEARANCES.

**GENERAL NOTE:**  
IT IS THE CONTRACTOR'S RESPONSIBILITY TO FILE A NOTICE OF INTENT/REQUEST TO BE INCLUDED IN THE STORM WATER GENERAL PERMIT, AND SUBMIT THE ASSOCIATED STORMWATER POLLUTION PREVENTION PLAN (SWPPP) AS REQUIRED BY FEDERAL LAW, AND MONITORED BY THE NEVADA DIVISION OF ENVIRONMENTAL PROTECTION.

**APPROVED FOR CONSTRUCTION 1<sup>st</sup> approved 4/17/07**  
LAS VEGAS VALLEY WATER DISTRICT PROJECT # 113901  
DATE: 11-20-07

**SANITARY SEWER ESTIMATED FLOW RATES:**

DAILY AVERAGE	27,605 GPD
PEAK FLOW	101,880 GPD

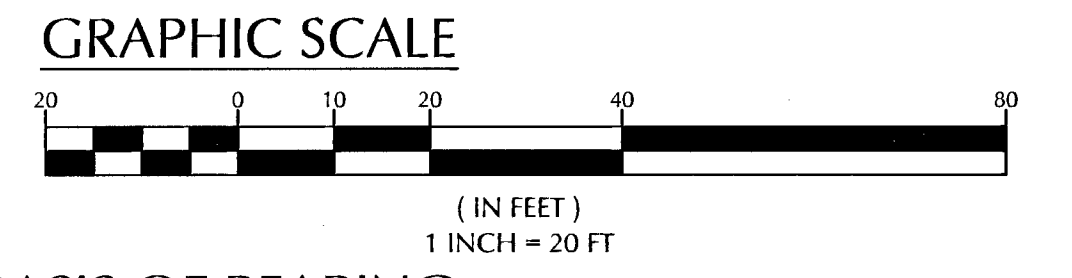
**FIRE FLOW CALCULATIONS:**

FIRE FLOW REQUIREMENTS IS: 1,500 GALLONS PER MINUTE AT 20 PSI RESIDUAL PRESSURE.

BASED ON:

SQUARE FOOTAGE (TOTAL)	22,905	SQUARE FEET
LARGEST AREA BETWEEN 4-HOUR AREA SEPARATION WALLS:	N/A	SQUARE FEET
BUILDING HEIGHT:	33'-2"	
NUMBER OF STORIES:	2	
TYPE OF CONSTRUCTION:	V-A	
OCCUPANCY:	SINGLE FAMILY	
FULL AUTOMATIC FIRE SPRINKLER SYSTEM:	YES	

REVIEW BY: [Signature] DATE: 11/16/07



**BASIS OF BEARING**  
SOUTH 89°30'09" WEST BEING THE BEARING OF THE NORTH OF THE NORTHEAST QUARTER (NE 1/4) OF SECTION 29, TOWNSHIP, RANGE 60, M.D.M., AS SHOWN BY MAP THEREOF ON FILE FILE 84, PAGE 82 OF PARCEL MAPS IN THE CLARK COUNTY RECORDER'S OFFICE, CLARK COUNTY, NEVADA.

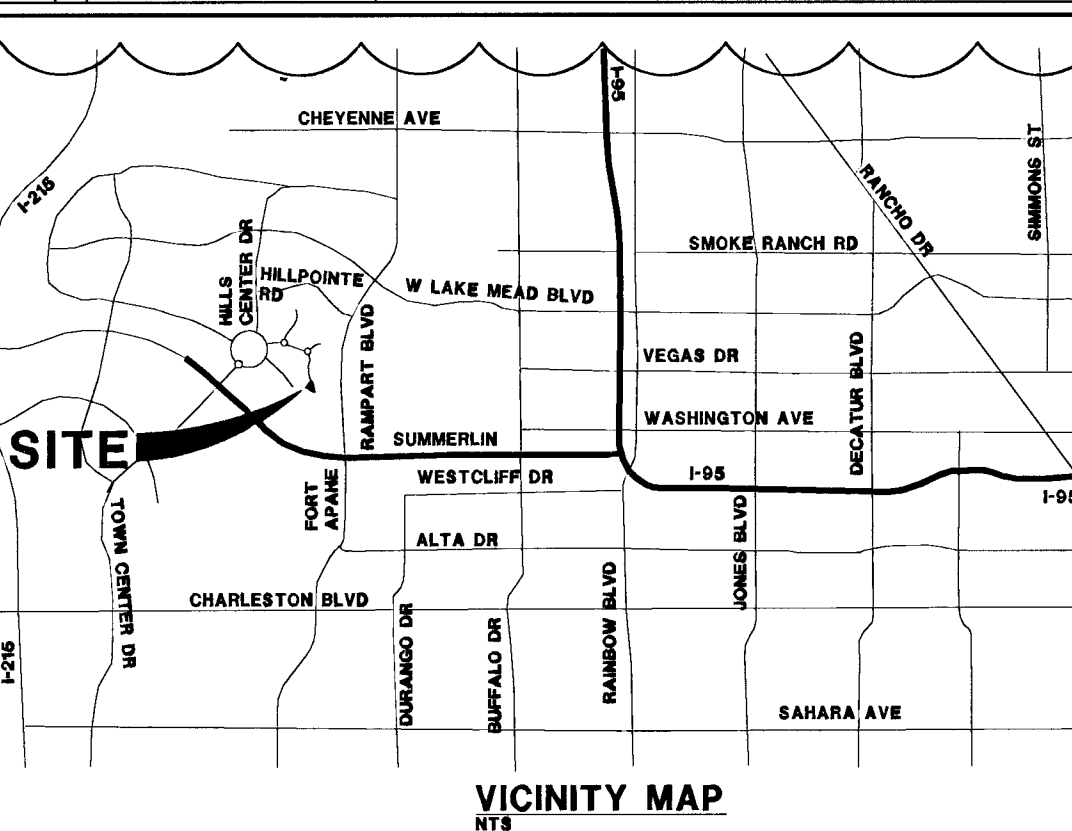
**BENCHMARK**  
CITY OF LAS VEGAS BM 0LV00 19E6  
A RIVET AND PLATE IN TOP OF CURB AT VILLAGE CENTER AND HILLS CENTER ON NORTH EDGE OF ROUNDABOUT  
ELEVATION: 2689.87' (819.642M) (NAD 83)

**SEWER CONSTRUCTION NOTES**

No.	ITEM	*SS STD. PER DESIGN AND CONSTRUCTION STANDARDS FOR WASTEWATER COLLECTION SYSTEMS
1	INSTALL CLEAN OUT PER UPC SECTION 707 (CLEAN OUT SIZE SAME AS LINE SIZE) WHERE CLEANOUT OCCURS IN PAVEMENT INSTALL A TRAFFIC BEARING LID	
2	INSTALL WYE WITH 45° BEND	
3	INSTALL 4" DIA. PVC (SDR-35) SEWER LATERAL	
4	SEE PLUMBING PLAN FOR CONTINUATION	
5	REMOVE PLUG & CONNECT	
6	INSTALL WYE AND CAP FOR FUTURE EXPANSION	

**WATER CONSTRUCTION NOTES**

No.	ITEM	*UDACS PLATE NO. PER UNIFORM DESIGN AND CONSTRUCTION STANDARDS FOR WATER DISTRIBUTION SYSTEMS
1	REMOVE STUB AND CONNECT	
2	INSTALL 45° BEND WITH THRUST BLOCK, PER UDACS PLATE NO. 5 (SAME SIZE AS LINE)	
3	INSTALL 8" X 6" (W) TAPPING SLEEVE WITH 6" TAPPING VALVE PER UDACS PLATE 22	
4	INSTALL 6" WATER LINE CLASS 53 DIP. (PUBLIC)	
5	INSTALL SERVICE SADDLE AND NEW SERVICE INSTALLATION FOR 2" METER PER UDACS PLATE 1D	
6	FOR DETAILED PROFILE OF WATERLINE, SEE DETAIL M/CB.01	
7	INSTALL 2" DOMESTIC WATER METER PER UDACS PLATES 1D	
8	INSTALL 3" DCDA PER UDACS PLATE NO. 11C ON 6'x5' CONCRETE PAD	
9	NOT USED	
10	INSTALL 2-1/2" COPPER DOMESTIC WATER (PRIVATE) SERVICE LINE	
11	INSTALL 3" COPPER FIRE WATER (PRIVATE) SERVICE LINE	
12	INSTALL 2 1/2" COPPER LINE (PRIVATE) & CAP FOR LANDSCAPE IRRIGATION	
13	SEE PLUMBING PLAN FOR CONTINUATION	
14	TRENCH SECTION PER UDACS PLATE NO. 6B. MATCH EXISTING SURFACE GRADE	
15	INSTALL 90° BEND WITH THRUST BLOCK PER UDACS PLATE NO. 5. (SAME SIZE AS LINE)	



**NOTE:**  
SEE NEVADA POWER COMPANY PROJECT # 182656 FOR POWER CONNECTION

**NOTE:**  
FOR STORM DRAIN INFORMATION REFER TO GRADING SHEETS.

**NOTE:**  
ON-SITE WATER LINES AND APPURTENANCES ARE PRIVATE FACILITIES NOT TO OPERATED OR MAINTAINED BY THE CITY OF LAS VEGAS.

**NOTE:**  
SEWER LINE DISTANCES ARE TAKEN FROM CENTER OF MANHOLE TO CENTER OF MANHOLE.

**MYLAR REEPLLOT**

NO.	DESCRIPTION OF REVISIONS	DATE	INITIALS
1	REVISED WATER, GAS AND POWER LOCATIONS AND REVISED SHEET INDEX NUMBER(S)		
2	ADDED WATER LINE PROFILE (LVWD)		
3	REVISED PLUMBING PLAN PROFILE (LVWD)		
4	REVISED WATERLINE PLUMBING PLAN PROFILE (LVWD)		
5	REVISED GAS PLUMBING PLAN PROFILE (LVWD)		
6	REVISED SANITARY SEWER PLAN PROFILE (LVWD)		
7	REVISED EASEMENT NOTE (LVWD)		
8	REVISED EASEMENT NOTE (LVWD)		

**PROFESSIONAL ENGINEER - STATE OF NEVADA**

THOMAS D. MILLER  
EXP. 12-31-07  
CIVIL  
NO. 15776

DATE: 08/23/07  
JOB NUMBER: 2137.02  
DESIGN BY: B. CHAMBERLAIN  
DRAWN BY: D. BOUMAN  
CHECKED BY: T. MILLER P.E.

**ENCLAVE LOT 7 RESIDENCE**  
APN: 138-20-416-007  
UTILITY PLAN (SANITARY, WATER AND GAS)

**MARTIN & MARTIN**  
CIVIL ENGINEERS & SURVEYORS  
2101 S. JONES BLVD  
SUITE 120  
LAS VEGAS, NV 89146  
PHONE (702) 248-8000  
FAX (702) 248-8070

**Call before you dig**

1-800-227-2900

**SEAL FOR THRU**

**LEGEND**

FUTURE	EXISTING	PROPOSED	DESCRIPTION
(Symbol)	(Symbol)	(Symbol)	4" PVC SEWER SERVICE
(Symbol)	(Symbol)	(Symbol)	2" RPPA
(Symbol)	(Symbol)	(Symbol)	3" DCDA
(Symbol)	(Symbol)	(Symbol)	6" DIP WATER
(Symbol)	(Symbol)	(Symbol)	1-1/4" PE GAS SERVICE
(Symbol)	(Symbol)	(Symbol)	2" PE GAS
(Symbol)	(Symbol)	(Symbol)	3" COPPER FIRE WATER
(Symbol)	(Symbol)	(Symbol)	2-1/2" COPPER DOMESTIC WATER
(Symbol)	(Symbol)	(Symbol)	2" RPPA
(Symbol)	(Symbol)	(Symbol)	2" 90° BEND
(Symbol)	(Symbol)	(Symbol)	2"x2.5" REDUCER
(Symbol)	(Symbol)	(Symbol)	2" RPPA
(Symbol)	(Symbol)	(Symbol)	2" 90° BEND
(Symbol)	(Symbol)	(Symbol)	2"x2.5" REDUCER
(Symbol)	(Symbol)	(Symbol)	2" RPPA
(Symbol)	(Symbol)	(Symbol)	2" 90° BEND
(Symbol)	(Symbol)	(Symbol)	2"x2.5" REDUCER
(Symbol)	(Symbol)	(Symbol)	2" RPPA
(Symbol)	(Symbol)	(Symbol)	2" 90° BEND
(Symbol)	(Symbol)	(Symbol)	2"x2.5" REDUCER
(Symbol)	(Symbol)	(Symbol)	2" RPPA
(Symbol)	(Symbol)	(Symbol)	2" 90° BEND
(Symbol)	(Symbol)	(Symbol)	2"x2.5" REDUCER
(Symbol)	(Symbol)	(Symbol)	2" RPPA
(Symbol)	(Symbol)	(Symbol)	2" 90° BEND
(Symbol)	(Symbol)	(Symbol)	2"x2.5" REDUCER
(Symbol)	(Symbol)	(Symbol)	2" RPPA
(Symbol)	(Symbol)	(Symbol)	2" 90° BEND
(Symbol)	(Symbol)	(Symbol)	2"x2.5" REDUCER
(Symbol)	(Symbol)	(Symbol)	2" RPPA
(Symbol)	(Symbol)	(Symbol)	2" 90° BEND
(Symbol)	(Symbol)	(Symbol)	2"x2.5" REDUCER
(Symbol)	(Symbol)	(Symbol)	2" RPPA
(Symbol)	(Symbol)	(Symbol)	2" 90° BEND
(Symbol)	(Symbol)	(Symbol)	2"x2.5" REDUCER
(Symbol)	(Symbol)	(Symbol)	2" RPPA
(Symbol)	(Symbol)	(Symbol)	2" 90° BEND
(Symbol)	(Symbol)	(Symbol)	2"x2.5" REDUCER
(Symbol)	(Symbol)	(Symbol)	2" RPPA
(Symbol)	(Symbol)	(Symbol)	2" 90° BEND
(Symbol)	(Symbol)	(Symbol)	2"x2.5" REDUCER
(Symbol)	(Symbol)	(Symbol)	2" RPPA
(Symbol)	(Symbol)	(Symbol)	2" 90° BEND
(Symbol)	(Symbol)	(Symbol)	2"x2.5" REDUCER
(Symbol)	(Symbol)	(Symbol)	2" RPPA
(Symbol)	(Symbol)	(Symbol)	2" 90° BEND
(Symbol)	(Symbol)	(Symbol)	2"x2.5" REDUCER
(Symbol)	(Symbol)	(Symbol)	2" RPPA
(Symbol)	(Symbol)	(Symbol)	2" 90° BEND
(Symbol)	(Symbol)	(Symbol)	2"x2.5" REDUCER
(Symbol)	(Symbol)	(Symbol)	2" RPPA
(Symbol)	(Symbol)	(Symbol)	2" 90° BEND
(Symbol)	(Symbol)	(Symbol)	2"x2.5" REDUCER
(Symbol)	(Symbol)	(Symbol)	2" RPPA
(Symbol)	(Symbol)	(Symbol)	2" 90° BEND
(Symbol)	(Symbol)	(Symbol)	2"x2.5" REDUCER
(Symbol)	(Symbol)	(Symbol)	2" RPPA
(Symbol)	(Symbol)	(Symbol)	2" 90° BEND
(Symbol)	(Symbol)	(Symbol)	2"x2.5" REDUCER
(Symbol)	(Symbol)	(Symbol)	2" RPPA
(Symbol)	(Symbol)	(Symbol)	2" 90° BEND
(Symbol)	(Symbol)	(Symbol)	2"x2.5" REDUCER
(Symbol)	(Symbol)	(Symbol)	2" RPPA
(Symbol)	(Symbol)	(Symbol)	2" 90° BEND
(Symbol)	(Symbol)	(Symbol)	2"x2.5" REDUCER
(Symbol)	(Symbol)	(Symbol)	2" RPPA
(Symbol)	(Symbol)	(Symbol)	2" 90° BEND
(Symbol)	(Symbol)	(Symbol)	2"x2.5" REDUCER
(Symbol)	(Symbol)	(Symbol)	2" RPPA
(Symbol)	(Symbol)	(Symbol)	2" 90° BEND
(Symbol)	(Symbol)	(Symbol)	2"x2.5" REDUCER
(Symbol)	(Symbol)	(Symbol)	2" RPPA
(Symbol)	(Symbol)	(Symbol)	2" 90° BEND
(Symbol)	(Symbol)	(Symbol)	2"x2.5" REDUCER
(Symbol)	(Symbol)	(Symbol)	2" RPPA
(Symbol)	(Symbol)	(Symbol)	2" 90° BEND
(Symbol)	(Symbol)	(Symbol)	2"x2.5" REDUCER
(Symbol)	(Symbol)	(Symbol)	2" RPPA
(Symbol)	(Symbol)	(Symbol)	2" 90° BEND
(Symbol)	(Symbol)	(Symbol)	2"x2.5" REDUCER
(Symbol)	(Symbol)	(Symbol)	2" RPPA
(Symbol)	(Symbol)	(Symbol)	2" 90° BEND
(Symbol)	(Symbol)	(Symbol)	2"x2.5" REDUCER
(Symbol)	(Symbol)	(Symbol)	2" RPPA
(Symbol)	(Symbol)	(Symbol)	2" 90° BEND
(Symbol)	(Symbol)	(Symbol)	2"x2.5" REDUCER
(Symbol)	(Symbol)	(Symbol)	2" RPPA
(Symbol)	(Symbol)	(Symbol)	2" 90° BEND
(Symbol)	(Symbol)	(Symbol)	2"x2.5" REDUCER
(Symbol)	(Symbol)	(Symbol)	2" RPPA
(Symbol)	(Symbol)	(Symbol)	2" 90° BEND
(Symbol)	(Symbol)	(Symbol)	2"x2.5" REDUCER
(Symbol)	(Symbol)	(Symbol)	2" RPPA
(Symbol)	(Symbol)	(Symbol)	2" 90° BEND
(Symbol)	(Symbol)	(Symbol)	2"x2.5" REDUCER
(Symbol)	(Symbol)	(Symbol)	2" RPPA
(Symbol)	(Symbol)	(Symbol)	2" 90° BEND
(Symbol)	(Symbol)	(Symbol)	2"x2.5" REDUCER
(Symbol)	(Symbol)	(Symbol)	2" RPPA
(Symbol)	(Symbol)	(Symbol)	2" 90° BEND
(Symbol)	(Symbol)	(Symbol)	2"x2.5" REDUCER
(Symbol)	(Symbol)	(Symbol)	2" RPPA
(Symbol)	(Symbol)	(Symbol)	2" 90° BEND
(Symbol)	(Symbol)	(Symbol)	2"x2.5" REDUCER
(Symbol)	(Symbol)	(Symbol)	2" RPPA
(Symbol)	(Symbol)	(Symbol)	2" 90° BEND
(Symbol)	(Symbol)	(Symbol)	2"x2.5" REDUCER
(Symbol)	(Symbol)	(Symbol)	2" RPPA
(Symbol)	(Symbol)	(Symbol)	2" 90° BEND
(Symbol)	(Symbol)	(Symbol)	2"x2.5" REDUCER
(Symbol)	(Symbol)	(Symbol)	2" RPPA
(Symbol)	(Symbol)	(Symbol)	2" 90° BEND
(Symbol)	(Symbol)	(Symbol)	2"x2.5" REDUCER
(Symbol)	(Symbol)	(Symbol)	2" RPPA
(Symbol)	(Symbol)	(Symbol)	2" 90° BEND
(Symbol)	(Symbol)	(Symbol)	2"x2.5" REDUCER
(Symbol)	(Symbol)	(Symbol)	2" RPPA
(Symbol)	(Symbol)	(Symbol)	2" 90° BEND
(Symbol)	(Symbol)	(Symbol)	2"x2.5" REDUCER
(Symbol)	(Symbol)	(Symbol)	2" RPPA
(Symbol)	(Symbol)	(Symbol)	2" 90° BEND
(Symbol)	(Symbol)	(Symbol)	2"x2.5" REDUCER
(Symbol)	(Symbol)	(Symbol)	2" RPPA
(Symbol)	(Symbol)	(Symbol)	2" 90° BEND
(Symbol)	(Symbol)	(Symbol)	2"x2.5" REDUCER
(Symbol)	(Symbol)	(Symbol)	2" RPPA
(Symbol)	(Symbol)	(Symbol)	2" 90° BEND
(Symbol)	(Symbol)	(Symbol)	2"x2.5" REDUCER
(Symbol)	(Symbol)	(Symbol)	2" RPPA
(Symbol)	(Symbol)	(Symbol)	2" 90° BEND
(Symbol)	(Symbol)	(Symbol)	2"x2.5" REDUCER
(Symbol)	(Symbol)	(Symbol)	2" RPPA
(Symbol)	(Symbol)	(Symbol)	2" 90° BEND
(Symbol)	(Symbol)	(Symbol)	2"x2.5" REDUCER
(Symbol)	(Symbol)	(Symbol)	2" RPPA
(Symbol)	(Symbol)	(Symbol)	2" 90° BEND
(Symbol)	(Symbol)	(Symbol)	2"x2.5" REDUCER
(Symbol)	(Symbol)	(Symbol)	2" RPPA
(Symbol)	(Symbol)	(Symbol)	2" 90° BEND
(Symbol)	(Symbol)	(Symbol)	2"x2.5" REDUCER
(Symbol)	(Symbol)	(Symbol)	2" RPPA
(Symbol)	(Symbol)	(Symbol)	2" 90° BEND
(Symbol)	(Symbol)	(Symbol)	2"x2.5" REDUCER
(Symbol)	(Symbol)	(Symbol)	2" RPPA
(Symbol)	(Symbol)	(Symbol)	2" 90° BEND
(Symbol)	(Symbol)	(Symbol)	2"x2.5" REDUCER
(Symbol)	(Symbol)	(Symbol)	2" RPPA
(Symbol)	(Symbol)	(Symbol)	2" 90° BEND
(Symbol)	(Symbol)	(Symbol)	2"x2.5" REDUCER
(Symbol)	(Symbol)	(Symbol)	2" RPPA
(Symbol)	(Symbol)	(Symbol)	2" 90° BEND
(Symbol)	(Symbol)	(Symbol)	2"x2.5" REDUCER
(Symbol)	(Symbol)	(Symbol)	2" RPPA
(Symbol)	(Symbol)	(Symbol)	2" 90° BEND
(Symbol)	(Symbol)	(Symbol)	2"x2.5" REDUCER
(Symbol)	(Symbol)	(Symbol)	2" RPPA
(Symbol)	(Symbol)	(Symbol)	2" 90° BEND
(Symbol)	(Symbol)	(Symbol)	2"x2.5" REDUCER
(Symbol)	(Symbol)	(Symbol)	2" RPPA
(Symbol)	(Symbol)	(Symbol)	2" 90° BEND
(Symbol)	(Symbol)	(Symbol)	2"x2.5" REDUCER
(Symbol)	(Symbol)	(Symbol)	2" RPPA
(Symbol)	(Symbol)	(Symbol)	2" 90° BEND
(Symbol)	(Symbol)	(Symbol)	2"x2.5" REDUCER
(Symbol)	(Symbol)	(Symbol)	2" RPPA
(Symbol)	(Symbol)	(Symbol)	2" 90° BEND
(Symbol)	(Symbol)	(Symbol)	2"x2.5" REDUCER
(Symbol)	(Symbol)	(Symbol)	2" RPPA
(Symbol)	(Symbol)	(Symbol)	2" 90° BEND
(Symbol)	(Symbol)	(Symbol)	2"x2.5" REDUCER
(Symbol)	(Symbol)	(Symbol)	2" RPPA
(Symbol)	(Symbol)	(Symbol)	2" 90° BEND
(Symbol)	(Symbol)	(Symbol)	2"x2.5" REDUCER