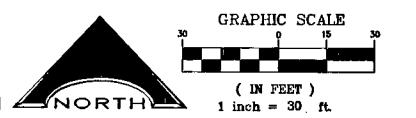
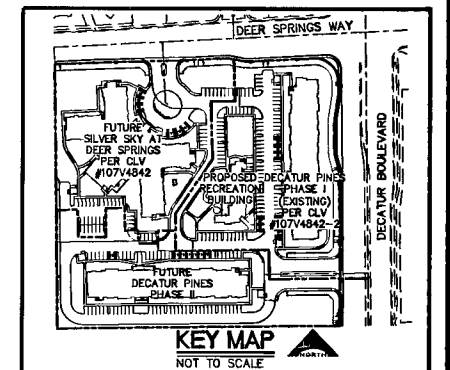
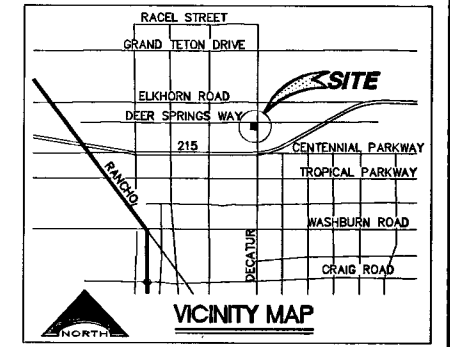
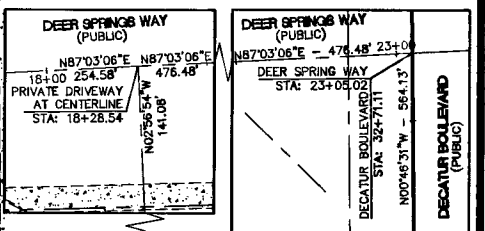


NOTE
OWNER RESPONSIBLE TO PROVIDE MONUMENTATION AS SHOWN AND TO REPLACE ALL SURVEY MONUMENTATION DAMAGED, DISTURBED, DESTROYED, OR OBTUSCURED DURING CONSTRUCTION.

APPROVED
SILVER SKY @ DEER SPRINGS
PER
CLV #107V4842



LINE TABLE			CURVE TABLE		
LINE	LENGTH	BEARING	CURVE	LENGTH	RADIUS
L1	23.01	N02°56'54"W	C1	15.71	5.00
L2	18.81	N02°56'54"W	C2	15.71	5.00
L3	18.81	N02°56'54"W	C3	24.51	28.00
L4	15.38	N02°56'54"W	C4	5.09	56.50
L5	4.95	S47°56'54"E	C5	11.10	56.50
L6	6.88	S90°00'00"E	C6	26.05	28.00
L7	15.00	N00°00'00"E	C7	4.71	3.00
L8	73.39	S90°00'00"E	C8	3.39	2.50
L9	15.50	N00°00'00"E	C9	28.50	18.50
L10	2.49	N90°00'00"E	C10	4.71	3.00
L11	17.35	N01°40'31"W	C11	4.71	3.00
L12	15.00	N88°19'29"E	C12	17.40	28.00
L13	55.00	N01°40'31"W	C13	32.10	53.00
L14	15.00	N88°19'29"E	C14	43.68	28.00
L15	8.97	N01°40'31"W	C15	16.96	28.00
L16	129.51	N33°55'45"E	C16	2.85	3.00
L17	21.37	N00°46'31"W	C17	7.85	2.50
L18	21.37	N00°46'31"W	C18	5.31	3.00
L19	126.69	N33°55'45"E	C19	34.25	28.00
L20	27.11	N88°19'29"E	C20	5.25	3.00
L21	55.00	N01°40'31"W			
L22	15.50	N88°19'29"E			
L23	15.50	N88°19'29"E			
L24	55.00	N01°40'31"W			
L25	14.78	N88°19'29"E			
L26	14.60	N00°00'00"E			
L27	55.00	S90°00'00"E			
L28	14.64	N00°00'00"E			



BASIS OF BEARING
NORTH 86°55'18" EAST, BEING THE BEARING OF THE CENTERLINE OF ROME BOULEVARD AS SHOWN ON A MAP ON FILE IN THE CLARK COUNTY, NEVADA RECORDER'S OFFICE AS FILE 106, PAGE 81 OF SURVEYS.

BENCHMARK
FOUND CITY OF LAS VEGAS BM RIVET AND PLATE IN CONCRETE CYLINDER AT THE SW CORNER OF BRADLEY AND ROME. SILV90 2458 2309.12(ft) 703.8215(m) NAVD88

DISCLAIMER NOTE
UTILITY LOCATIONS SHOWN HEREON ARE APPROXIMATE ONLY. IT SHALL BE THE CONTRACTOR'S RESPONSIBILITY TO DETERMINE THE EXACT HORIZONTAL AND VERTICAL LOCATION OF ALL EXISTING UNDERGROUND AND OVERHEAD UTILITIES PRIOR TO COMMENCING CONSTRUCTION. NO REPRESENTATION IS MADE THAT ALL EXISTING UTILITIES ARE SHOWN HEREON. THE ENGINEER ASSUMES NO RESPONSIBILITY FOR UTILITIES NOT SHOWN OR UTILITIES NOT SHOWN IN THEIR PROPER LOCATION.

Call before you Dig
Avoid cutting underground utility lines. It's costly.
Call 811
1-800-227-2600
CLARK COUNTY TRAFFIC OPERATIONS
1-702-455-7544

Avoid overhead power line contact
Call before you OVERHEAD
1-702-227-2929
NEVADA POWER ENVIRONMENT AND SAFETY SERVICES DEPARTMENT

Avoid hitting underground traffic signal systems and street light system conduits. It's costly.
Call before you UNDERGROUND
1-702-455-7511
CLARK COUNTY TRAFFIC OPERATIONS
1-702-452-5300
LAS VEGAS AREA COMPUTERIZED TRAFFIC SYSTEM

APPROBATE APPD 1/19/16

REV NO REVISION DESCRIPTION

APR 124-24-701-037 TRAFFIC SIGNAL SYSTEMS AND STREET LIGHT SYSTEM CONDUITS

USA and CITY OF LAS VEGAS LEASE

APR 124-24-701-041 CITY OF LAS VEGAS - DEVELOPMENT: VACANT ZONE: R-E

APR 124-19-313-000 TERRASIAN AT ALHAMBRA

NEVADA HAND. 295 EAST WARDEN SPRINGS ROAD SUITE 101 LAS VEGAS, NEVADA 89118 TEL (702) 739-3345 CONTACT: ROBERT FLEHMAN

L.R. NELSON CONSULTING ENGINEERS, INC. 8745 West Sahara Blvd. Suite 200 Las Vegas, Nevada 89118 (702) 798-7979 FAX (702) 451-2268 FAX

HORIZONTAL CONTROL PLAN

DECATUR PINES - REC. BLDG.
DECATUR PINES WAY AND DECATUR BLDG.

DESIGNED BY: [Signature]

CHECKED BY: [Signature]

PROJECT NO: 1527-001-071

SCALE: 1"=30'

SHEET 13 OF 14

CLV DRAWING NO. 107V4842-REC