

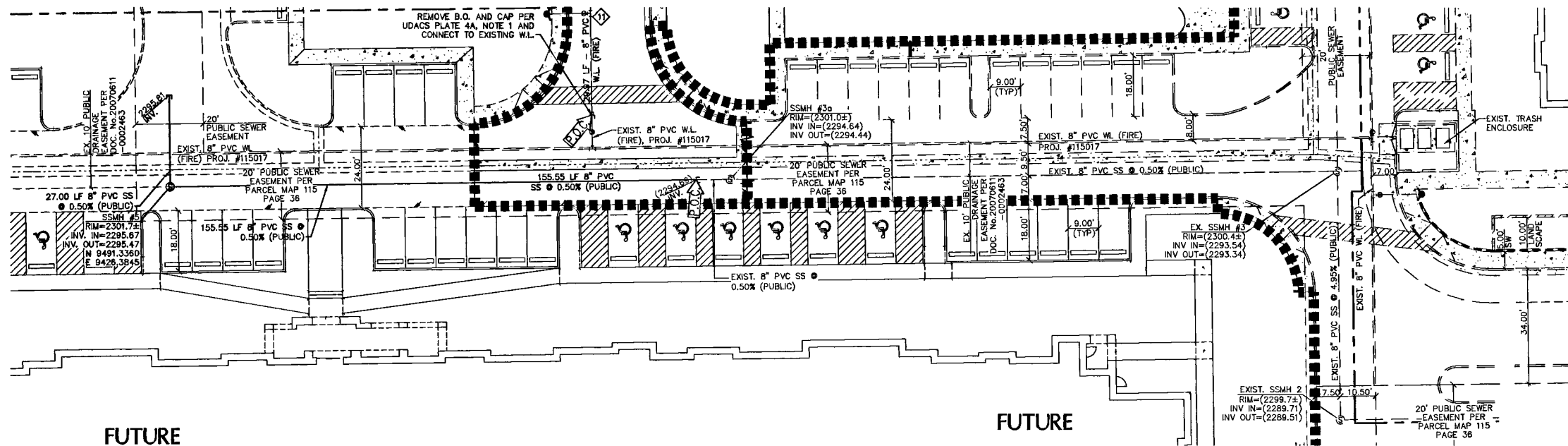
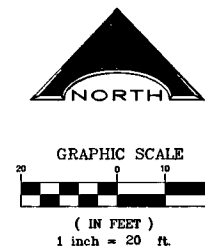
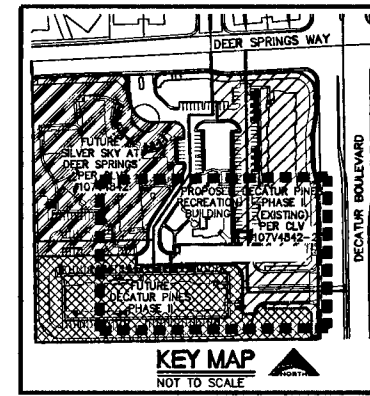
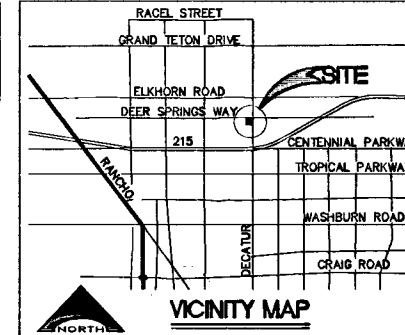
ALL SEWER/STORM DRAINS CROSSING WATER LINES MUST CONFORM TO SECTION 2.19 OF THE UNIFORM DESIGN AND CONSTRUCTION STANDARDS FOR POTABLE WATER SYSTEMS (UDACS) FOR WATER AND STORM MAIN CROSSINGS AND CLEARANCES.

BENCHMARK
FOUND CITY OF LAS VEGAS BM RIVET AND PLATE IN CONCRETE CYLINDER AT THE SW CORNER OF BRADLEY AND ROWE.
5LV90 2456 2309.12(ft) 703.8215(m) NAVD88

BASIS OF BEARING
NORTH 86°55'18" EAST, BEING THE BEARING OF THE CENTERLINE OF ROWE BOULEVARD AS SHOWN ON A MAP ON FILE IN THE CLARK COUNTY, NEVADA RECORDER'S OFFICE AS FILE 108, PAGE 81 OF SURVEYS.

OWNER/DEVELOPER
NEVADA H.A.N.D.
285 EAST WARM SPRINGS ROAD SUITE 101
LAS VEGAS, NEVADA 89119-4212
TEL: (435-8025) CONTACT: ROBERT FEBLEMAN

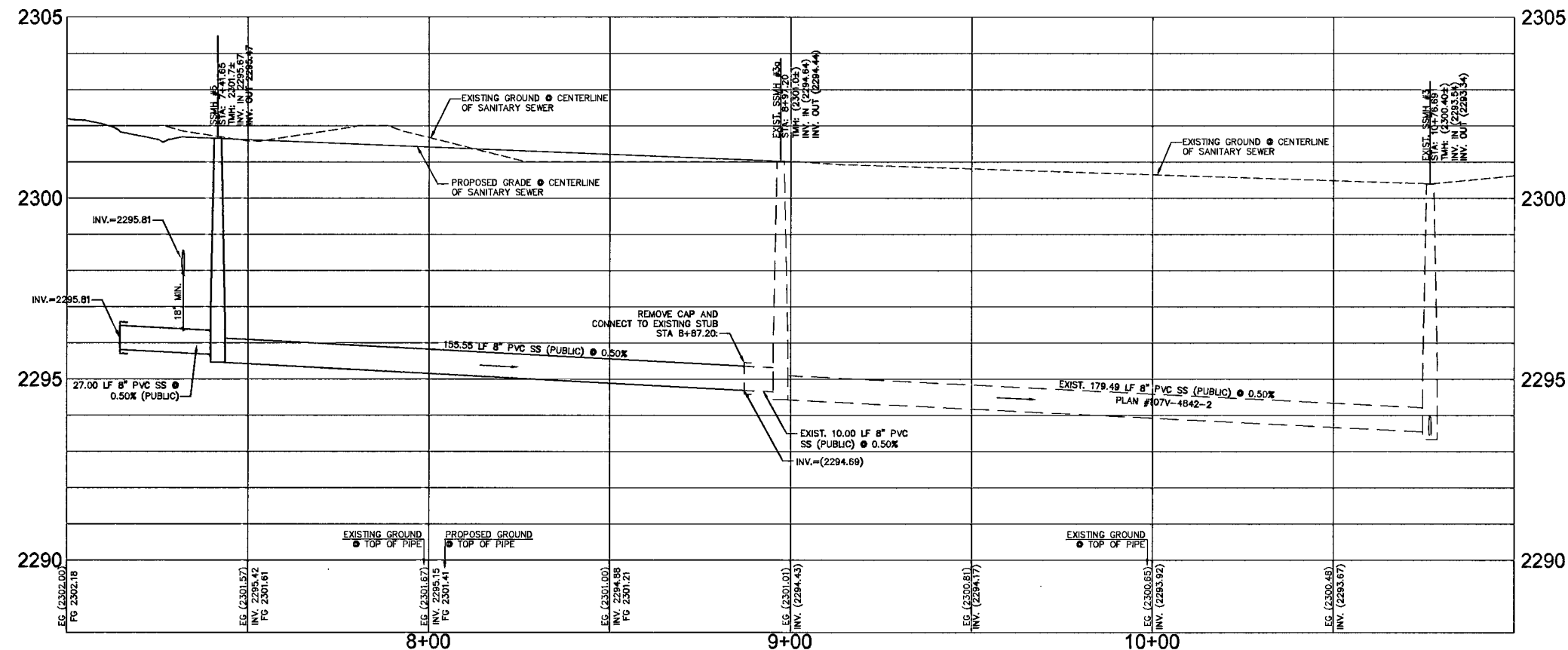
SOILS REPORT
GEOTEK, INC. - NEVADA
DATED DECEMBER 6, 2006
GEOTEK PROJECT #7624-LV6



LEGEND AND ABBREVIATIONS

- | | |
|--------------------------------|---------------------|
| APN = ASSESSOR'S PARCEL NUMBER | ROW = RIGHT OF WAY |
| CLV = CITY OF LAS VEGAS | SD = STORM DRAIN |
| DI = DROP INLET | SS = SANITARY SEWER |
| DW = DOMESTIC WATER | STA = STATION |
| EX = EXISTING | STL = STREET LIGHT |
| EXIST = EXISTING | SW = SIDEWALK |
| FH = FIRE HYDRANT | SWR = SEWER |
| FF = FINISH FLOOR | TCO = TOP CLEAN OUT |
| INV = INVERT OF PIPE | TYP = TYPICAL |
| PP = POWER POLE | WL = WATER LINE |
| PVC = POLY VINYL CHLORIDE | |

- CONSTRUCTION NOTE
 RIGHT-OF-WAY LINE/PROPERTY LINE
 STREET CENTERLINE
 SAWTOOTH LINE
 LIMITS OF EXISTING/PROPOSED/FUTURE
 EXIST. FIRE HYDRANT
 EXIST. WATER VALVE
 EXIST. SANITARY SEWER MANHOLE



DISCLAIMER NOTE

UTILITY LOCATIONS SHOWN HEREON ARE APPROXIMATE ONLY. IT SHALL BE THE CONTRACTOR'S RESPONSIBILITY TO DETERMINE THE EXACT HORIZONTAL AND VERTICAL LOCATION OF ALL EXISTING UNDERGROUND AND OVERHEAD UTILITIES PRIOR TO COMMENCING CONSTRUCTION. NO REPRESENTATION IS MADE THAT ALL EXISTING UTILITIES ARE SHOWN HEREON. THE ENGINEER ASSUMES NO RESPONSIBILITY FOR UTILITIES NOT SHOWN OR UTILITIES NOT SHOWN IN THEIR PROPER LOCATION.

N/A
 LAS VEGAS VALLEY WATER DISTRICT
 PROJECT #11008

Call before you Dig
 Avoid cutting underground utility lines. It's costly.
 Call 811
 1-800-227-2600
 CLARK COUNTY TRAFFIC OPERATIONS
 1-702-455-7544

Avoid overhead power line contact
 Call before you OVERHEAD
 1-702-227-2929
 NEVADA POWER ENVIRONMENT AND SAFETY SERVICES DEPARTMENT

Avoid hitting underground traffic signal systems and street light system conduits.
 Call before you UNDERGROUND
 1-702-455-7511
 CLARK COUNTY TRAFFIC OPERATIONS
 1-702-455-7544

REV	NO.	REVISION DESCRIPTION

NEVADA H.A.N.D.
 285 EAST WARM SPRINGS ROAD SUITE 101
 LAS VEGAS, NEVADA 89119-4212
 TEL: (702) 739-3345 CONTACT: ROBERT FEBLEMAN

L.R. NELSON CONSULTING ENGINEERS, INC.
 6785 West Russell Road Suite 200
 Las Vegas, Nevada 89118
 TEL: (702) 491-2298 FAX: (702) 491-2298

SEWER PLAN AND PROFILE

TITLE
 DECATUR PINES - REC. BLDG.
 DEER SPRINGS WAY AND DECATUR BLVD
 CITY OF LAS VEGAS

DRAWN BY: August '09
 DESIGNED BY: August '09
 CHECKED BY: August '09
 PROJECT NO: SCALE: 1"=20'
 1527-001-071 N/A

SEAL
 PROFESSIONAL ENGINEER IN THE STATE OF NEVADA
 JAMES YANDELL
 Exp. 6-30-10
 CIVIL
 No. 18109

7/1/09
 SHEET PP
 12 OF 14 SHEETS
 CLV DRAWING NO. 107V4892-REC

119539
 119442
 PGM