

Call before you OVERHEAD
1-702-227-2929
Call before you Dig
1-800-227-2600

BASIS OF BEARINGS

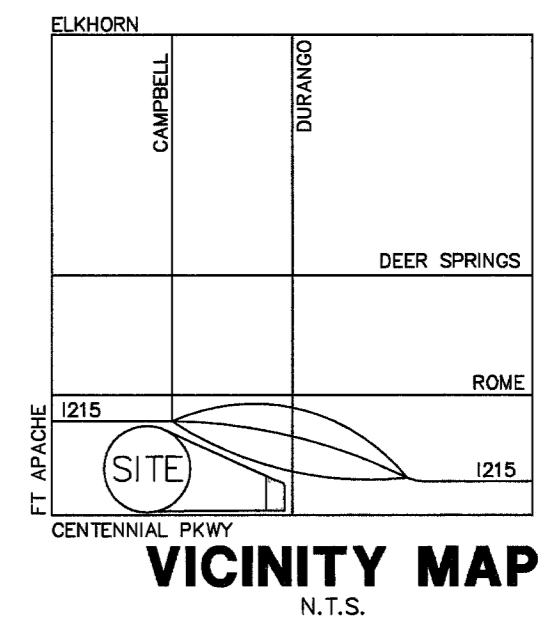
SOUTH 89°30'38" WEST, BEING THE SOUTH LINE OF THE SE 1/4 OF THE SW 1/4 OF SECTION 20, T. 19 S., R. 60 E. M.D.M., CITY OF LAS VEGAS, CLARK COUNTY, NEVADA PER A RECORD OF SURVEY ON FILE WITH THE CLARK COUNTY RECORDER IN FILE 123, PAGE 82.

BENCHMARK

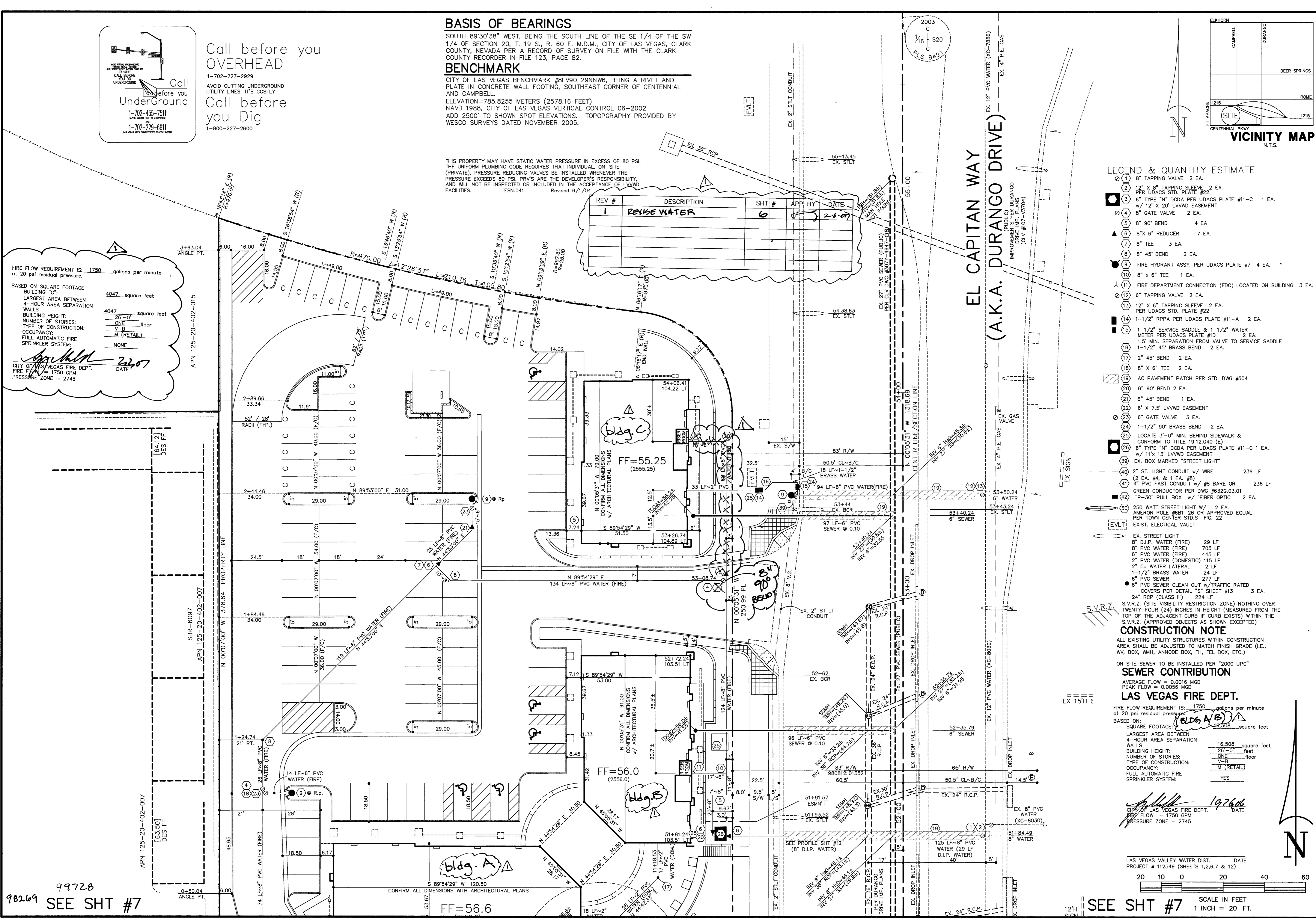
CITY OF LAS VEGAS BENCHMARK #8LV90 29NNW6, BEING A RIVET AND PLATE IN CONCRETE WALL FOOTING, SOUTHEAST CORNER OF CENTENNIAL AND CAMPBELL.
ELEVATION=785.8255 METERS (2578.16 FEET)
NAVD 1988, CITY OF LAS VEGAS VERTICAL CONTROL 06-2002
ADD 2500' TO SHOWN SPOT ELEVATIONS. TOPOGRAPHY PROVIDED BY WESCO SURVEYS DATED NOVEMBER 2005.

THIS PROPERTY MAY HAVE STATIC WATER PRESSURE IN EXCESS OF 80 PSI. THE UNIFORM PLUMBING CODE REQUIRES THAT INDIVIDUAL, ON-SITE (PRIVATE), PRESSURE REDUCING VALVES BE INSTALLED WHENEVER THE PRESSURE EXCEEDS 80 PSI. PRVs ARE THE DEVELOPER'S RESPONSIBILITY, AND WILL NOT BE INSPECTED OR INCLUDED IN THE ACCEPTANCE OF L.V.W.D. FACILITIES. ESN.041 Revised 6/1/04

REV #	DESCRIPTION	SHT #	APPY BY	DATE
1	REVERSE WATER	6		2-1-07

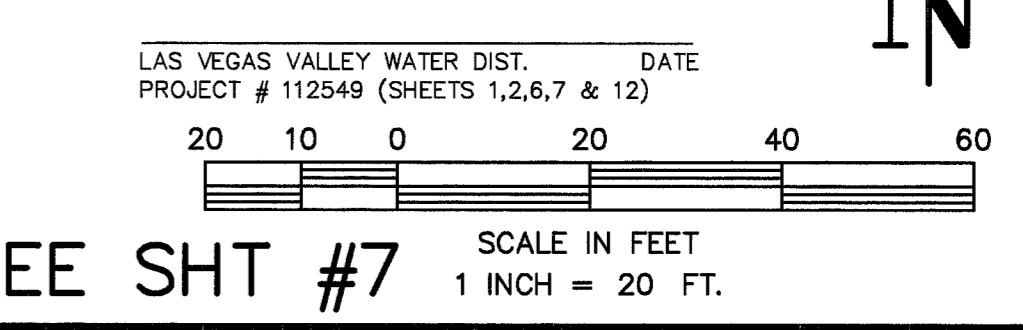


FIRE FLOW REQUIREMENT IS: 1750 gallons per minute at 20 psi residual pressure.
BASED ON SQUARE FOOTAGE BUILDING "C": 4047 square feet
LARGEST AREA BETWEEN 4-HOUR AREA SEPARATION WALLS: 4047 square feet
BUILDING HEIGHT: 26'-0" square feet
NUMBER OF STORIES: ONE floor
TYPE OF CONSTRUCTION: V-B
OCCUPANCY: M (RETAIL)
FULL AUTOMATIC FIRE SPRINKLER SYSTEM: NONE



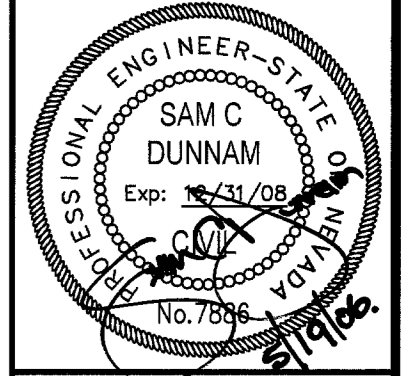
- LEGEND & QUANTITY ESTIMATE**
- ① 8" TAPPING VALVE 2 EA.
 - ② 12" X 8" TAPPING SLEEVE 2 EA. PER UDACS STD. PLATE #22
 - ③ 6" TYPE "N" DCCA PER UDACS PLATE #11-C 1 EA.
 - ④ 6" X 12" X 20" LVWD EASEMENT
 - ⑤ 8" GATE VALVE 2 EA.
 - ⑥ 8" 90° BEND 4 EA.
 - ⑦ 8" X 6" REDUCER 7 EA.
 - ⑧ 8" TEE 3 EA.
 - ⑨ 8" 45° BEND 2 EA.
 - ⑩ FIRE HYDRANT ASSY. PER UDACS PLATE #7 4 EA.
 - ⑪ 8" X 6" TEE 1 EA.
 - ⑫ FIRE DEPARTMENT CONNECTION (FDC) LOCATED ON BUILDING 3 EA.
 - ⑬ 6" TAPPING VALVE 2 EA.
 - ⑭ 12" X 6" TAPPING SLEEVE 2 EA. PER UDACS STD. PLATE #22
 - ⑮ 1-1/2" RPPA PER UDACS PLATE #11-A 2 EA.
 - ⑯ 1-1/2" SERVICE SADDLE & 1-1/2" WATER METER PER UDACS PLATE #10 2 EA.
 - ⑰ 1.5" MIN. SEPARATION FROM VALVE TO SERVICE SADDLE
 - ⑱ 1-1/2" 45° BRASS BEND 2 EA.
 - ⑲ 2" 45° BEND 2 EA.
 - ⑳ 8" X 6" TEE 2 EA.
 - ㉑ AC PAVEMENT PATCH PER STD. DWG #504
 - ㉒ 6" 90° BEND 2 EA.
 - ㉓ 6" 45° BEND 1 EA.
 - ㉔ 6" X 7.5" LVWD EASEMENT
 - ㉕ 6" GATE VALVE 3 EA.
 - ㉖ 1-1/2" 90° BRASS BEND 2 EA.
 - ㉗ LOCATE 3'-0" MIN. BEHIND SIDEWALK & CONFORM TO TITLE 19.12.040 (E)
 - ㉘ 6" TYPE "N" DCCA PER UDACS PLATE #11-C 1 EA.
 - ㉙ w/ 11' X 13' LVWD EASEMENT
 - ㉚ EX. BOX MARKED "STREET LIGHT"
 - ㉛ 2" ST. LIGHT CONDUIT w/ WIRE 236 LF (2 EA. #4, & 1 EA. #8)
 - ㉜ 4" PVC FAST CONDUIT w/ #8 BARE OR 236 LF
 - ㉝ GREEN CONDUCTOR PER DWG #632G.03.01 "P-30" PULL BOX w/ FIBER OPTIC 2 EA.
 - ㉞ 250 WATT STREET LIGHT w/ 2 EA.
 - ㉟ AMERON POLE #81-26 OR APPROVED EQUAL PER TOWN CENTER STD.S FIG. 22
 - EXIST. ELECTRICAL VAULT
 - EX. STREET LIGHT
 - 8" D.I.P. WATER (FIRE) 29 LF
 - 8" PVC WATER (FIRE) 705 LF
 - 6" PVC WATER (FIRE) 445 LF
 - 2" PVC WATER (DOMESTIC) 115 LF
 - 2" CU WATER LATERAL 2 LF
 - 1-1/2" BRASS WATER 24 LF
 - 6" PVC SEWER 277 LF
 - 6" PVC SEWER CLEAN OUT w/ TRAFFIC RATED COVERS PER DETAIL "S" SHEET #13 3 EA.
 - 24" RCP (CLASS III) 224 LF
 - S.V.R.Z. (SITE VISIBILITY RESTRICTION ZONE) NOTHING OVER TWENTY-FOUR (24) INCHES IN HEIGHT (MEASURED FROM THE TOP OF THE ADJACENT CURB IF CURB EXISTS) WITHIN THE S.V.R.Z. (APPROVED OBJECTS AS SHOWN EXCEPTED)

CONSTRUCTION NOTE
ALL EXISTING UTILITY STRUCTURES WITHIN CONSTRUCTION AREA SHALL BE ADJUSTED TO MATCH FINISH GRADE (I.E., WY, BOX, WMH, ANNODE BOX, FH, TEL BOX, ETC.)
ON SITE SEWER TO BE INSTALLED PER "2000 UPC"
SEWER CONTRIBUTION
AVERAGE FLOW = 0.0016 MGD
PEAK FLOW = 0.0058 MGD
LAS VEGAS FIRE DEPT.
FIRE FLOW REQUIREMENT IS: 1750 gallons per minute at 20 psi residual pressure.
BASED ON: (Bldg. A/B) 4047 square feet
SQUARE FOOTAGE: 4047 square feet
LARGEST AREA BETWEEN 4-HOUR AREA SEPARATION WALLS: 4047 square feet
BUILDING HEIGHT: 26'-0" feet
NUMBER OF STORIES: ONE floor
TYPE OF CONSTRUCTION: V-B
OCCUPANCY: M (RETAIL)
FULL AUTOMATIC FIRE SPRINKLER SYSTEM: YES



DUNNAM CIVIL ENGINEERS
3471 WEST OJUEENDO ROAD SUITE 101
LAS VEGAS, NV 89116
(702) 798-1088 (702) 367-8145 FAX

DURANGO AND CENTENNIAL CENTER
UTILITY PLAN (NORTH)



FILE NAME: INTESTU.dwg
PLOT SCALE: 1" = 20'
SHEET 6 OF TWENTY FOUR
CLV DRAWING # 10v4954

98269 99728 SEE SHT #7

SEE SHT #7