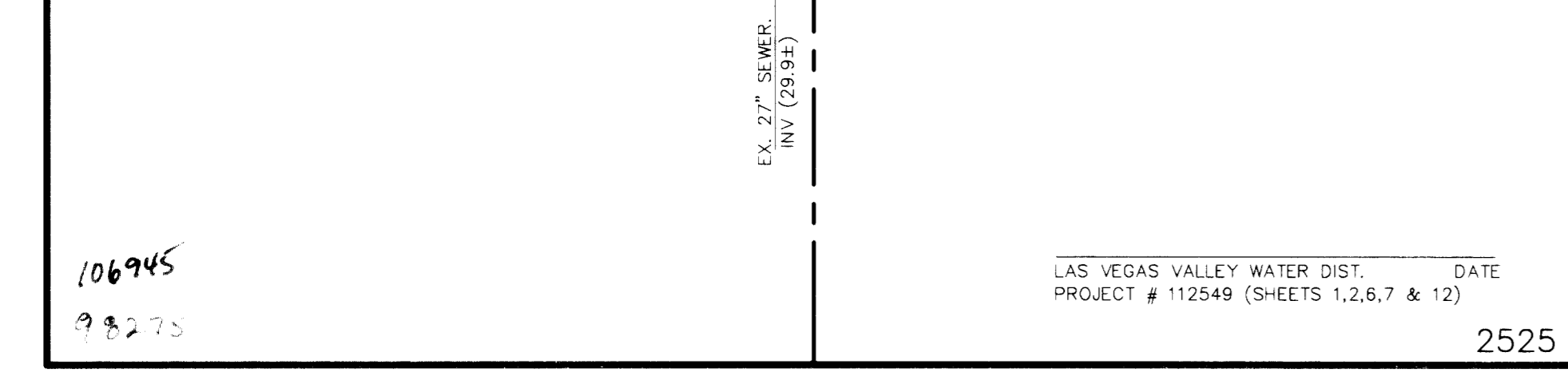
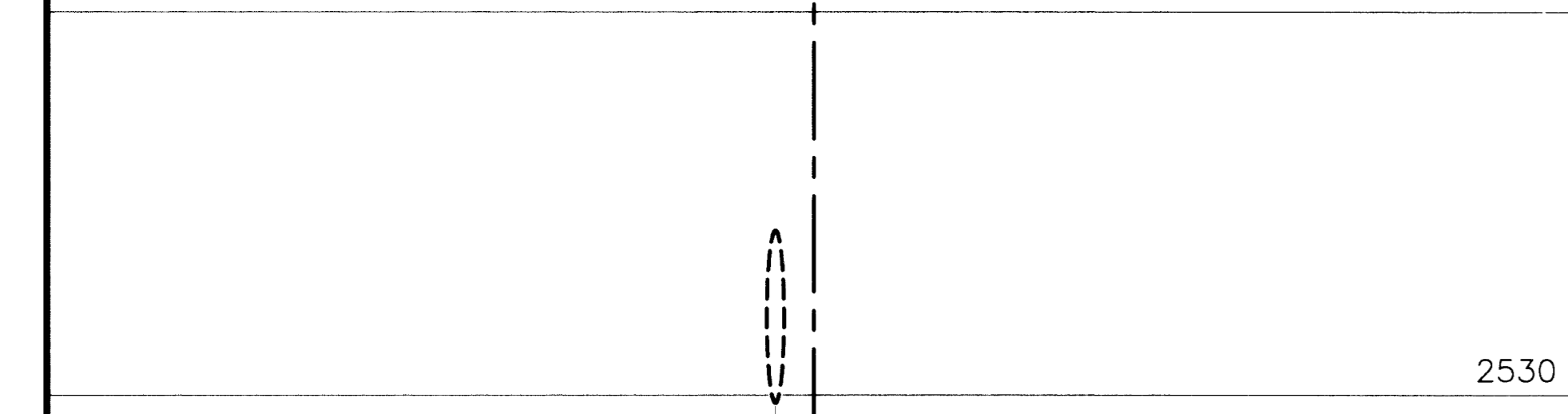
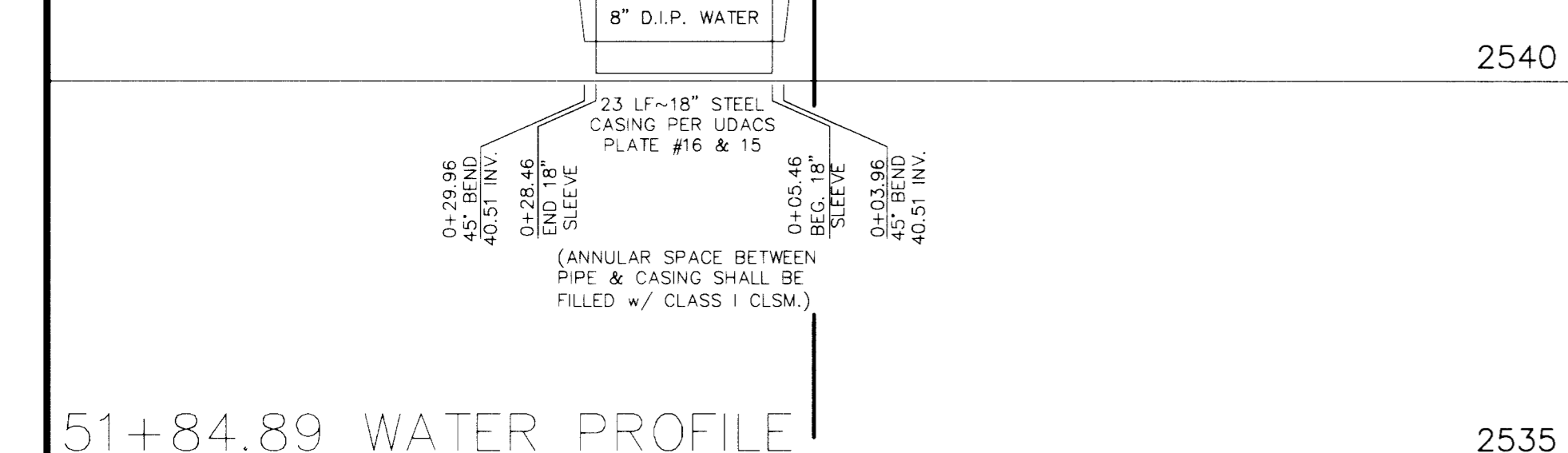
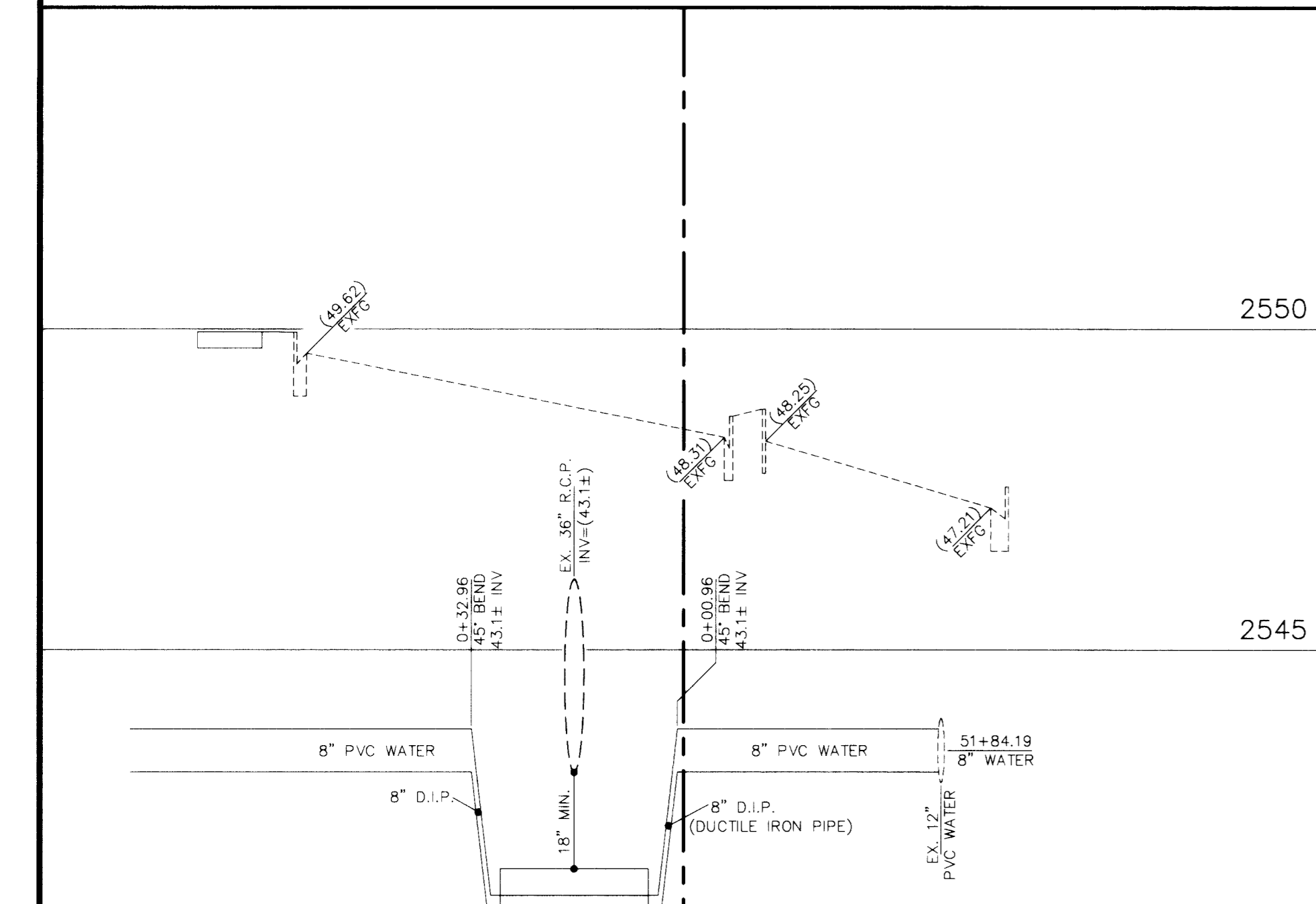
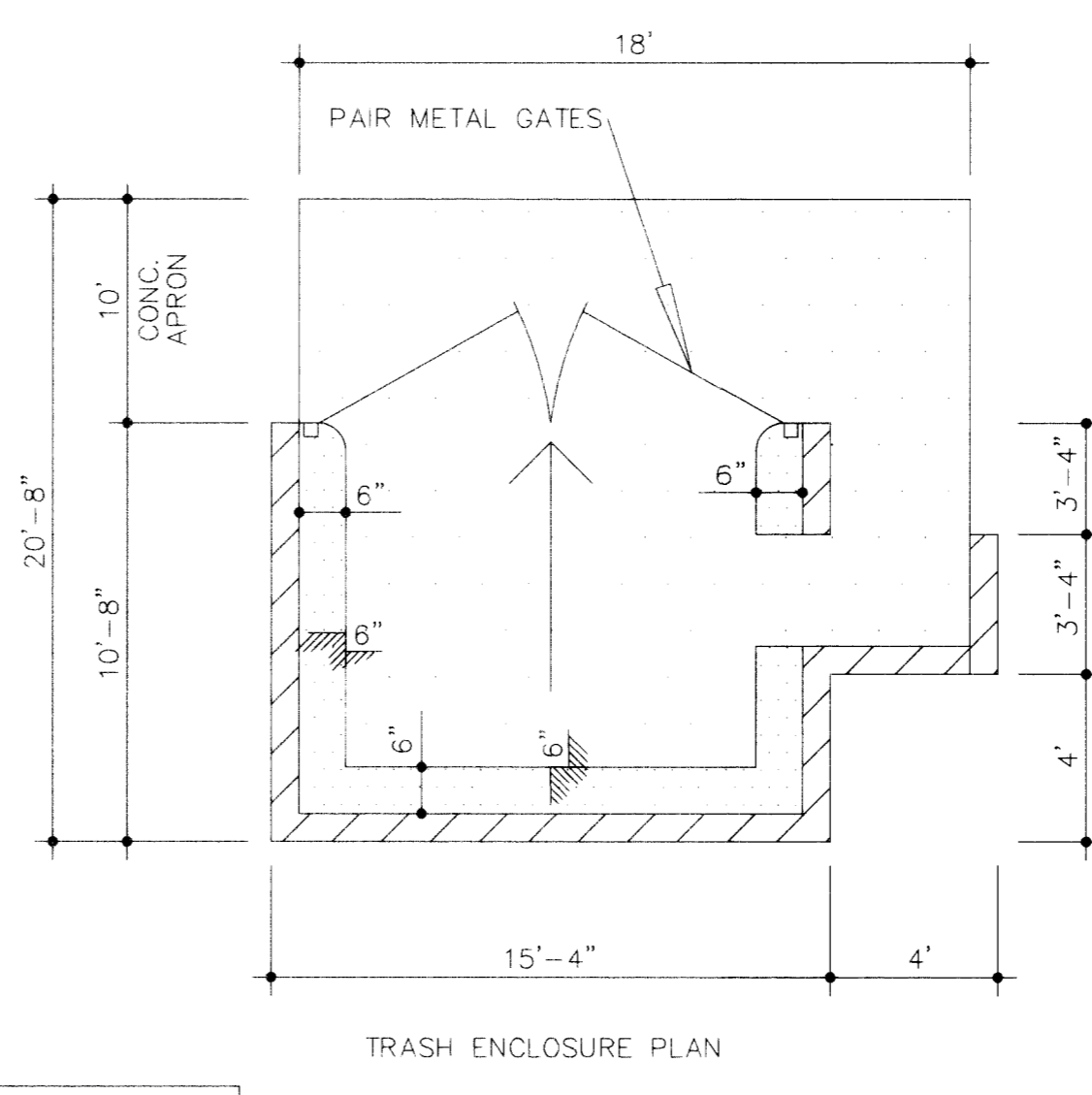
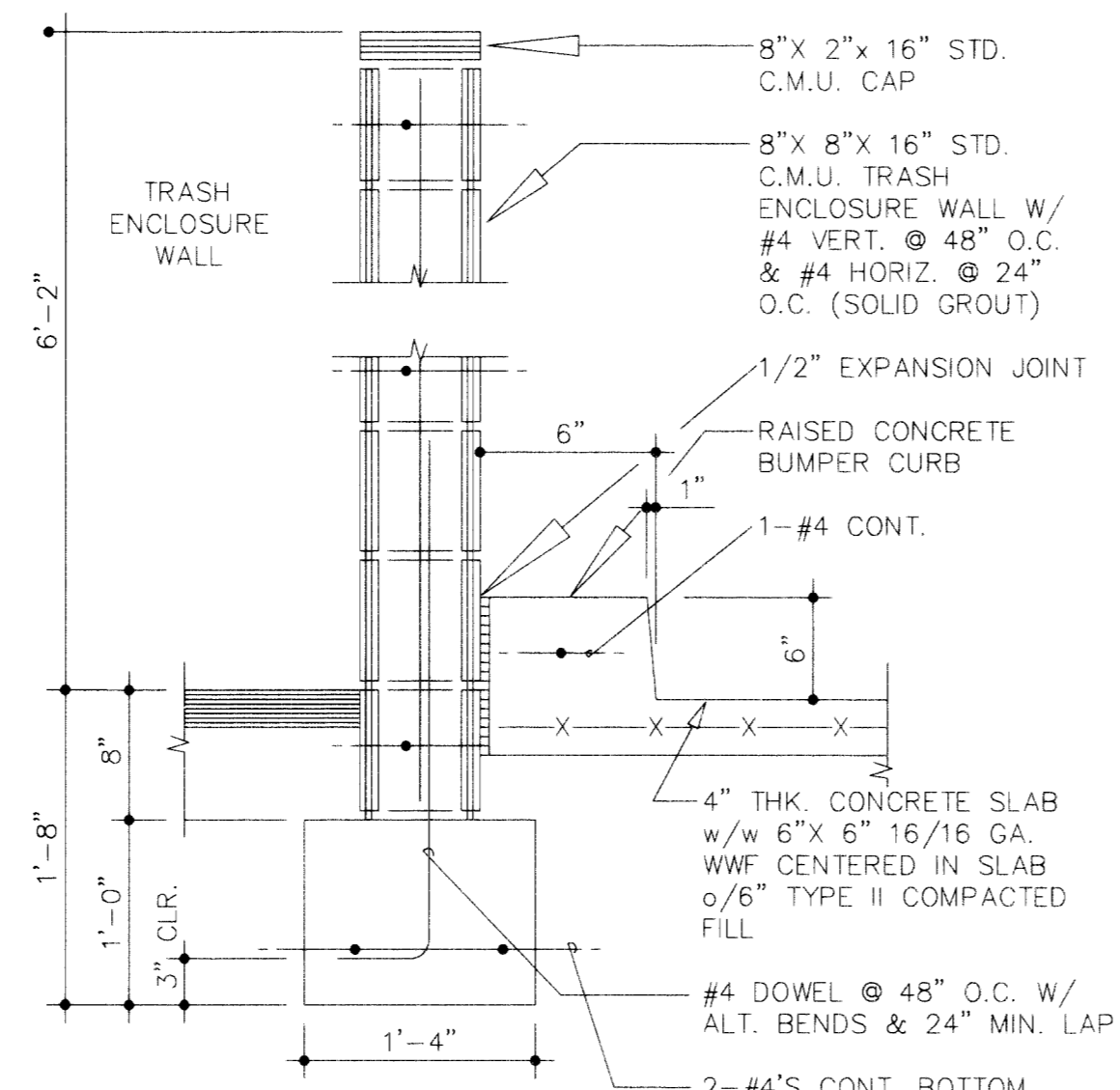


0+00
SCALE IN FEET
1 INCH = 20 FT.



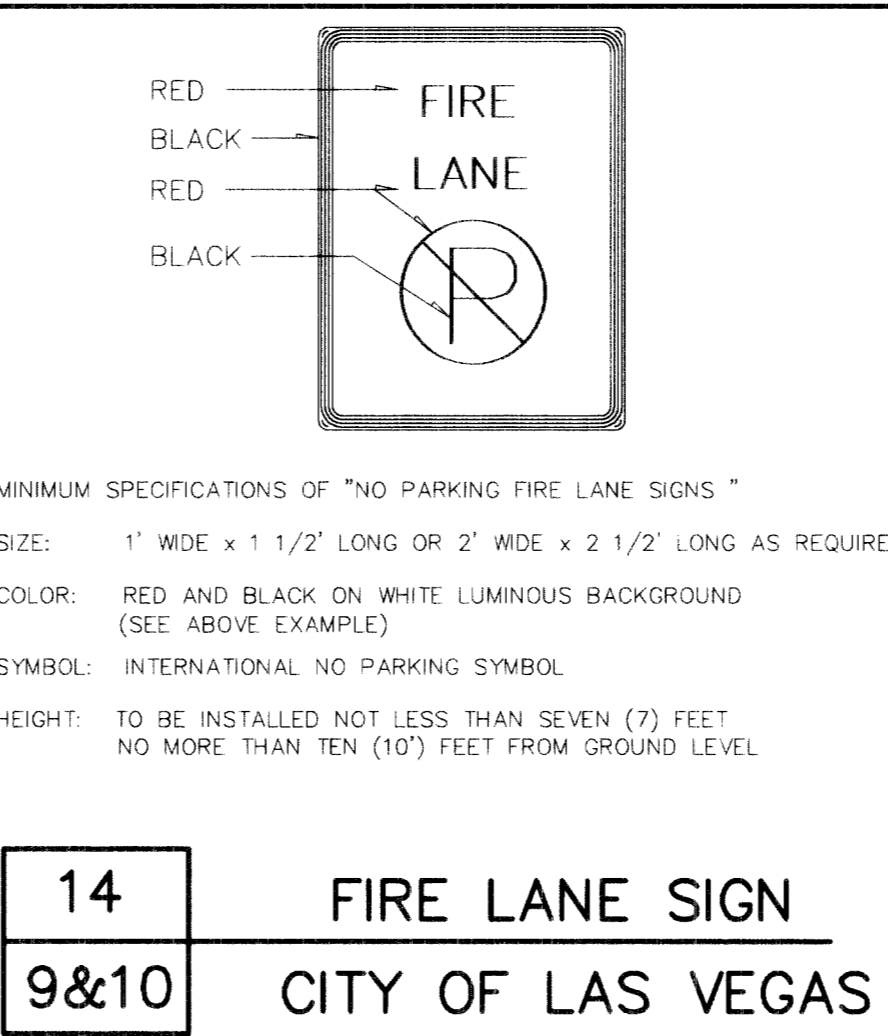
LAS VEGAS VALLEY WATER DIST. DATE
PROJECT # 112549 (SHEETS 1,2,6,7 & 12)
2525



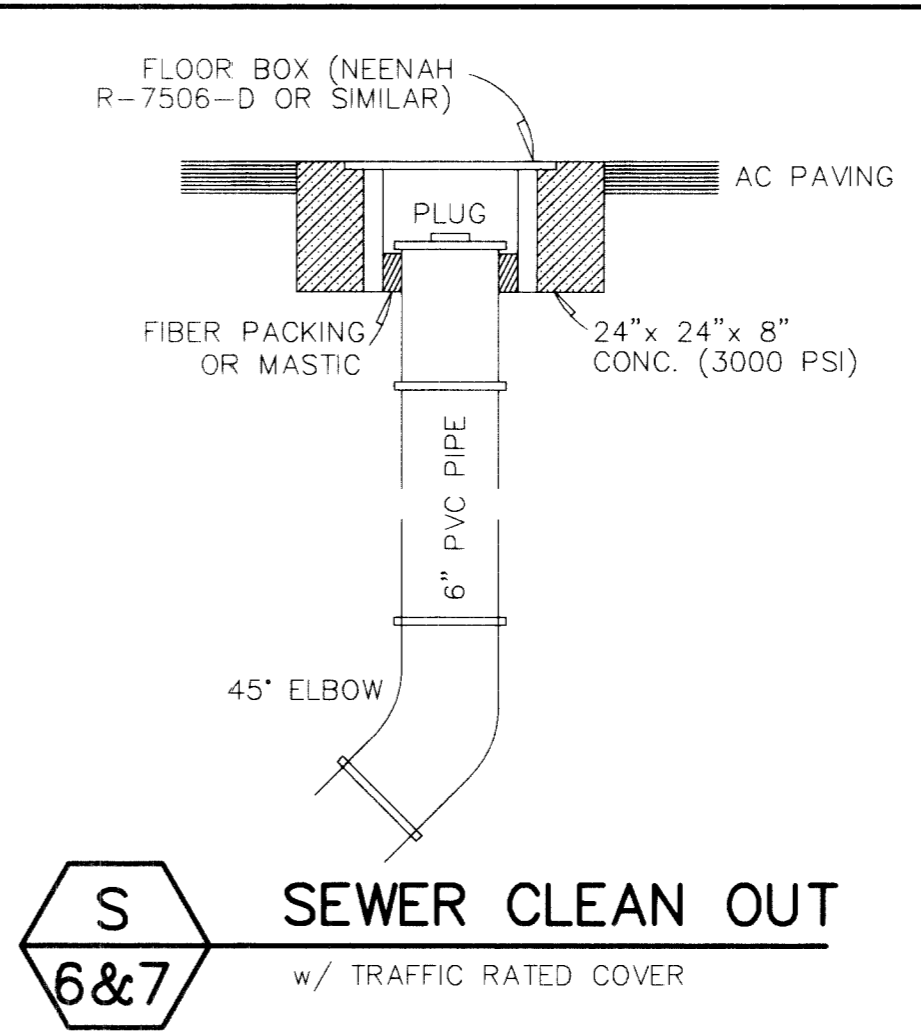
- INSPECTIONS REQUIRED:
1. FOOTING INSPECTION PRIOR TO PLACING CONCRETE.
 2. WALL STEEL INSPECTION PRIOR TO GROUTING.
 3. FINAL INSPECTION.

- NOTES:
1. A GOOD CONCRETE MIXTURE FOR FOOTINGS IS BY VOLUME: 1 PART PORTLAND CEMENT, 2.75 PARTS SAND, 4 PARTS GRAVEL NOT LARGER THAN 1.5 INCHES, AND JUST ENOUGH WATER TO MAKE THE MIXTURE "MUSHY" AND WORKABLE, BUT NOT "SOUPY." THE WATER CONTENT SHOULD NOT BE MORE THAN 7.5 GALLONS PER SACK OF CEMENT FOR THE ABOVE MIX. WHERE SALTS ARE PRESENT IN THE SOIL, TYPE V CEMENT IS REQUIRED.
 - A GOOD MORTAR MIXTURE SHOULD BE IN PROPORTIONS OF 1 PART PORTLAND CEMENT, 1/3 PART LIME (HYDRATED), AND 3 PARTS SAND. THE WATER CONTENT SHOULD BE ACCORDING TO ABSORPTION AND SUCTION ABILITY TO ASSURE NORMAL FLOW AND SPREADING WITH A TROWEL.
 - A GOOD GROUT MIXTURE SHOULD BE COMPOSED BY VOLUME OF 1 PART PORTLAND CEMENT, 2 PARTS SAND, AND 1 PART PEA GRAVEL. SUFFICIENT WATER SHALL BE ADDED TO PRODUCE CONSISTENCY FOR POURING WITHOUT SEGREGATION.
 2. UNSUPPORTED ENDS OF WALLS SHALL TERMINATE IN A REINFORCED PILASTER COLUMN OR THE END CELL SHALL BE REINFORCED AND GROUTED SOLID.
 3. THIS WALL HAS BEEN DESIGNED TO BE SUPPORTED BY SOIL THAT DEVELOPS 1500 P.S.F. BEARING CAPACITY. WHERE A LOCATION HAS SOIL THAT CANNOT SUPPORT THIS DESIGN OR HAS SPECIAL SOIL CONDITIONS, THIS DESIGN CANNOT BE USED. CONTACT YOUR LOCAL BUILDING DEPARTMENT.

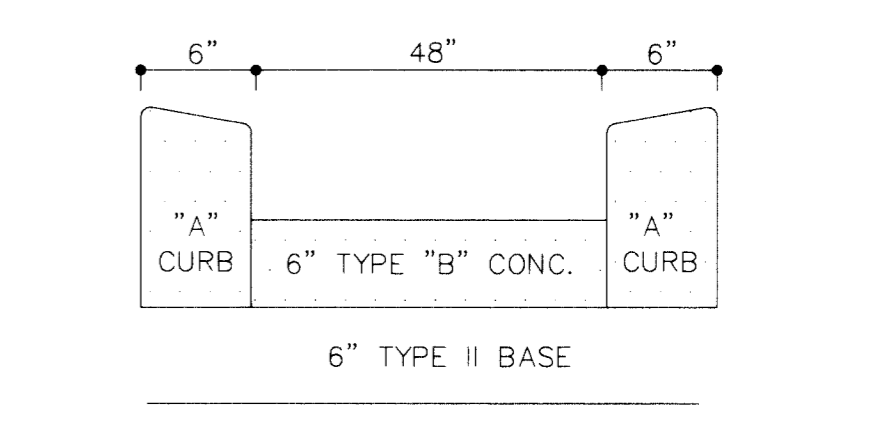
7
4 TRASH ENCLOSURE
SEE ARCHITECTURAL PLANS



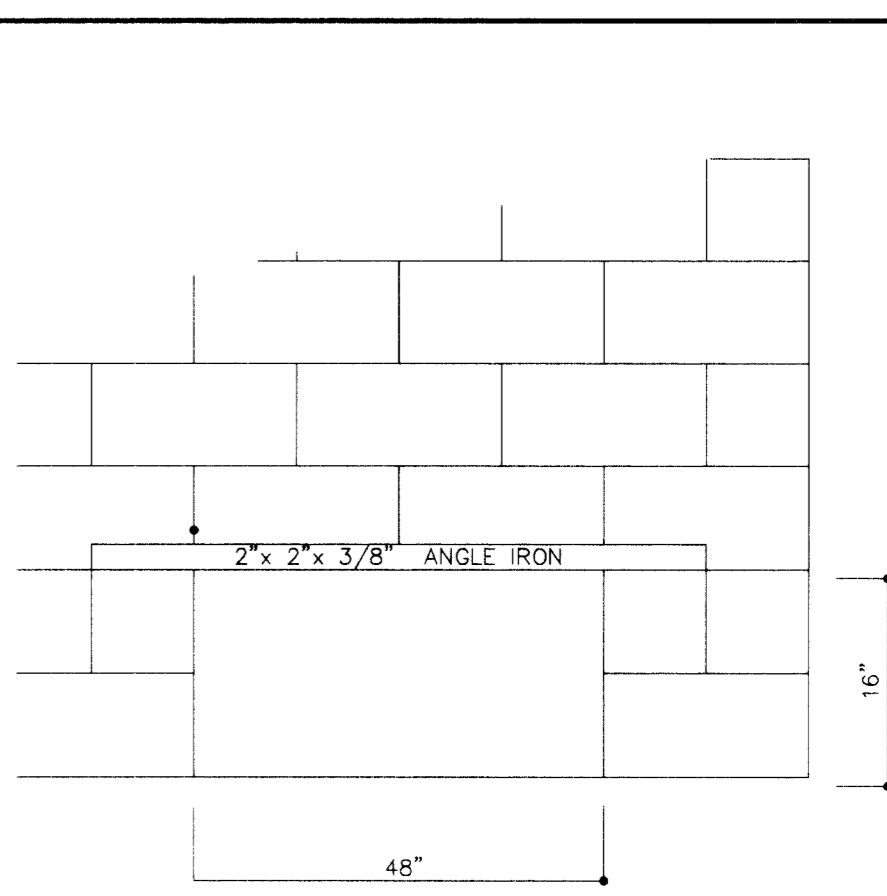
14
9&10 FIRE LANE SIGN
CITY OF LAS VEGAS



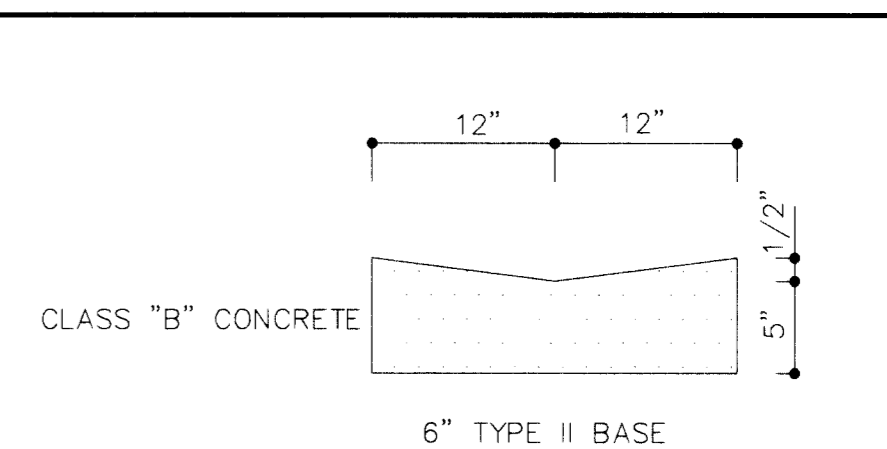
S
6&7 SEWER CLEAN OUT
w/ TRAFFIC RATED COVER



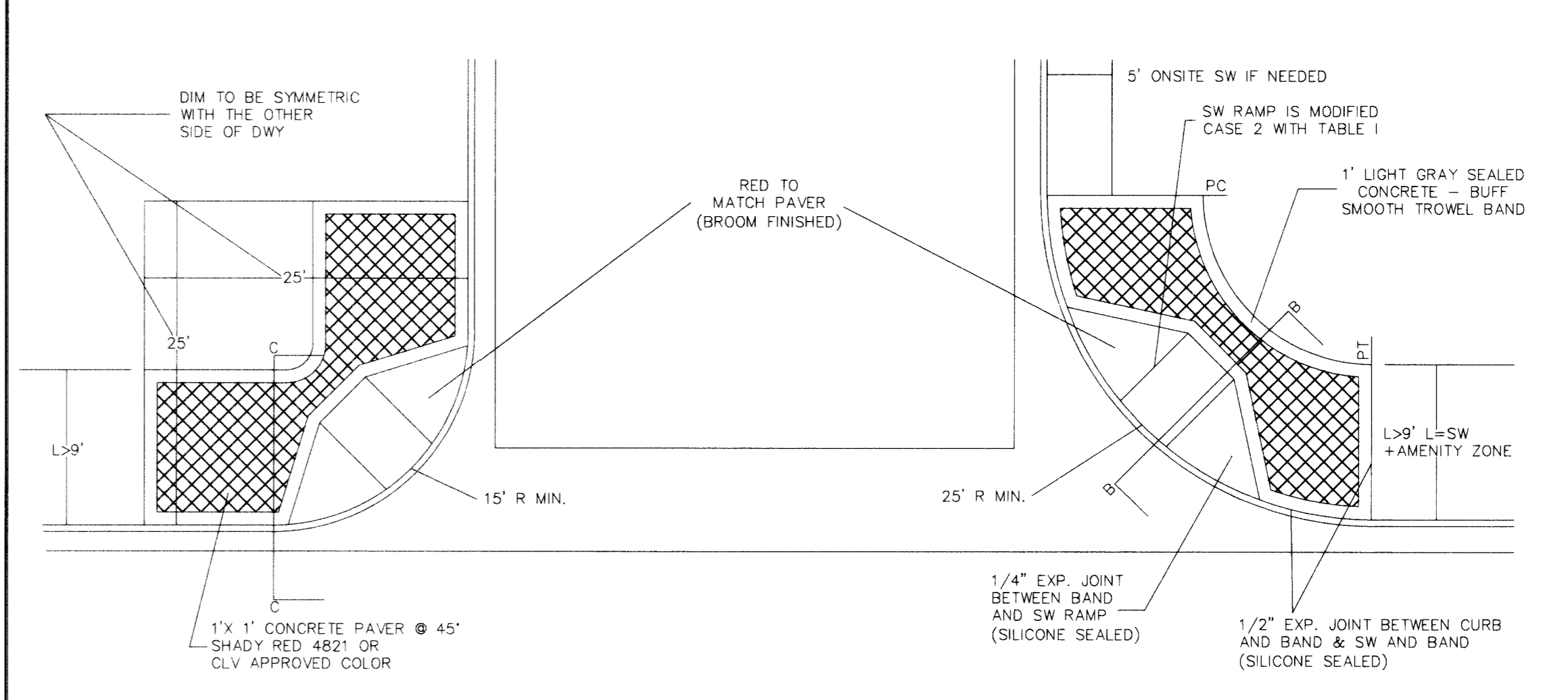
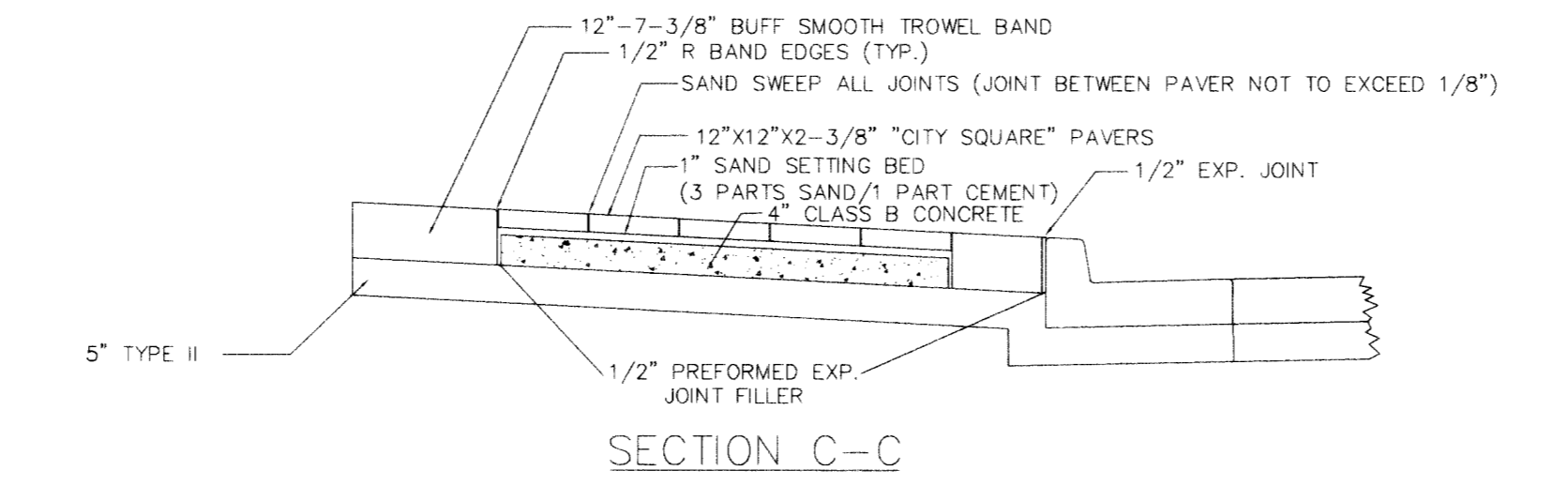
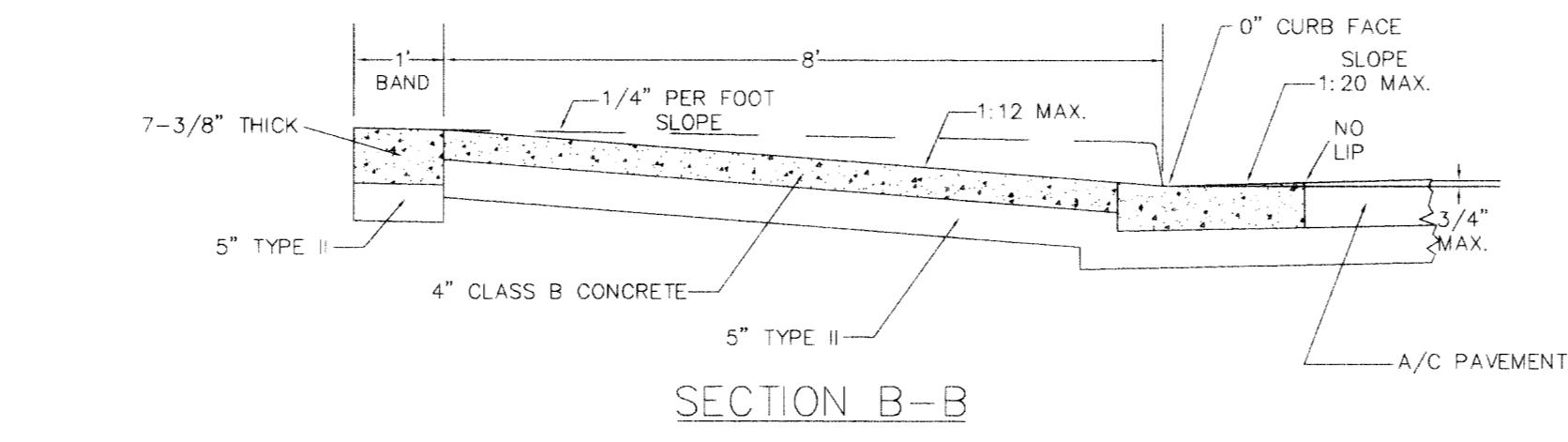
19
4 "CONCRETE FLUME"



12
4 BLOCK WALL OPENING



17
4&5 "24\"/>



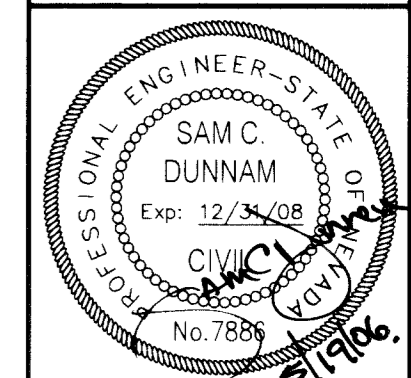
13
4&5 DETAIL

TOWN CENTER DEVELOPMENT STANDARDS

NO.	DATE	REVISION
2	12-07	REMOVE STAIRS, ADD 1/2\"/>
		REMOVE STAIRS - R.K.

DUNNAM CIVIL ENGINEERS
3471 WEST OQUENDO ROAD SUITE 101
LAS VEGAS, NV 89118
(702) 798-1088 (702) 367-8145 FAX

DURANGO AND CENTENNIAL CENTER
DETAILS



FILE NAME: INTE51D1.dwg
PLOT SCALE: 1\"/>

12
OF TWENTY FOUR
CLV DRAWING # 10N14054

13708