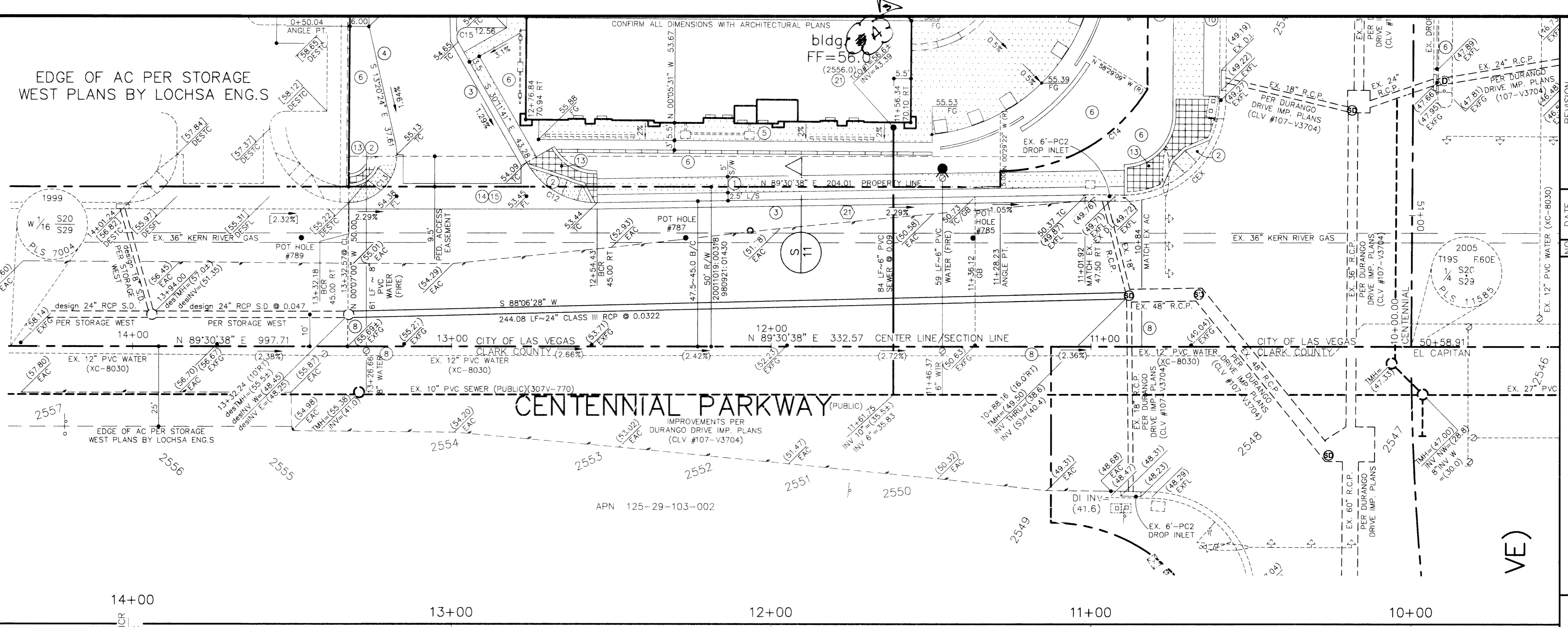
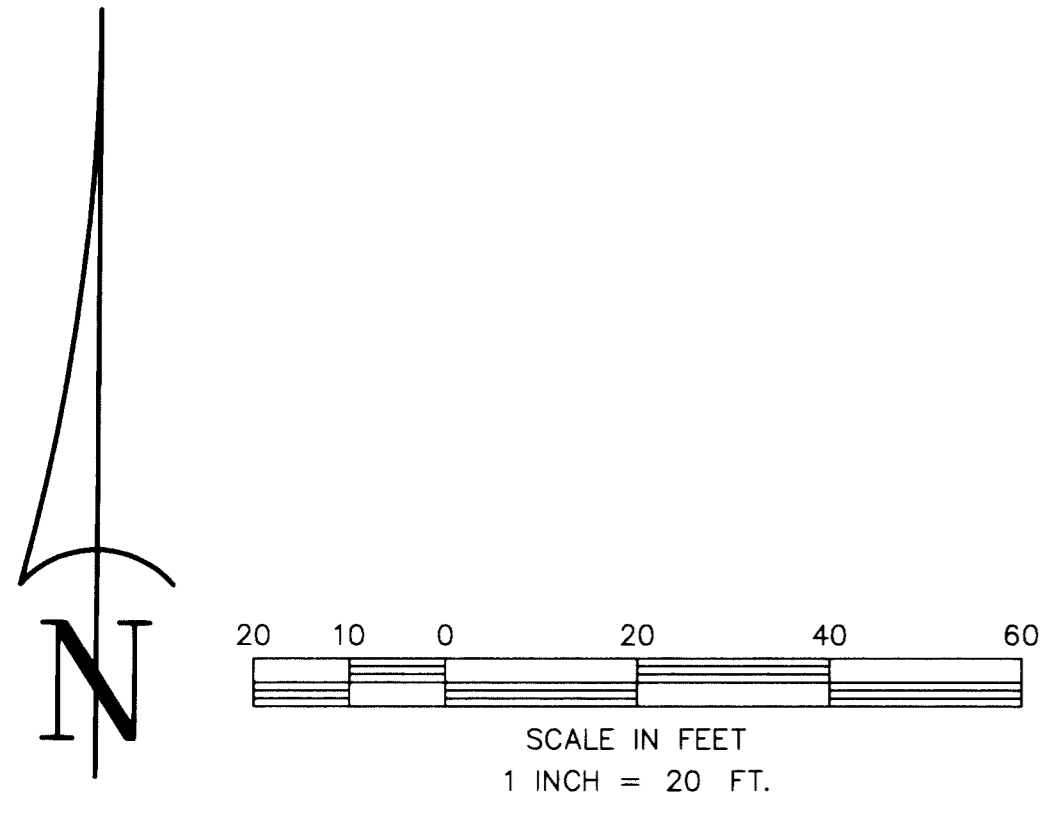


EDGE OF AC PER STORAGE WEST PLANS BY LOCHSA ENG.S

GDP 0



| NO. | DATE     | REVISION     |
|-----|----------|--------------|
| 1   | 12-12-07 | BUDGARD - PK |

**DUNNAM CIVIL ENGINEERS**  
 30371 WEST DOLENDO ROAD SUITE 101  
 LAS VEGAS, NV 89118  
 (702) 796-1088 (702) 367-8145 FAX

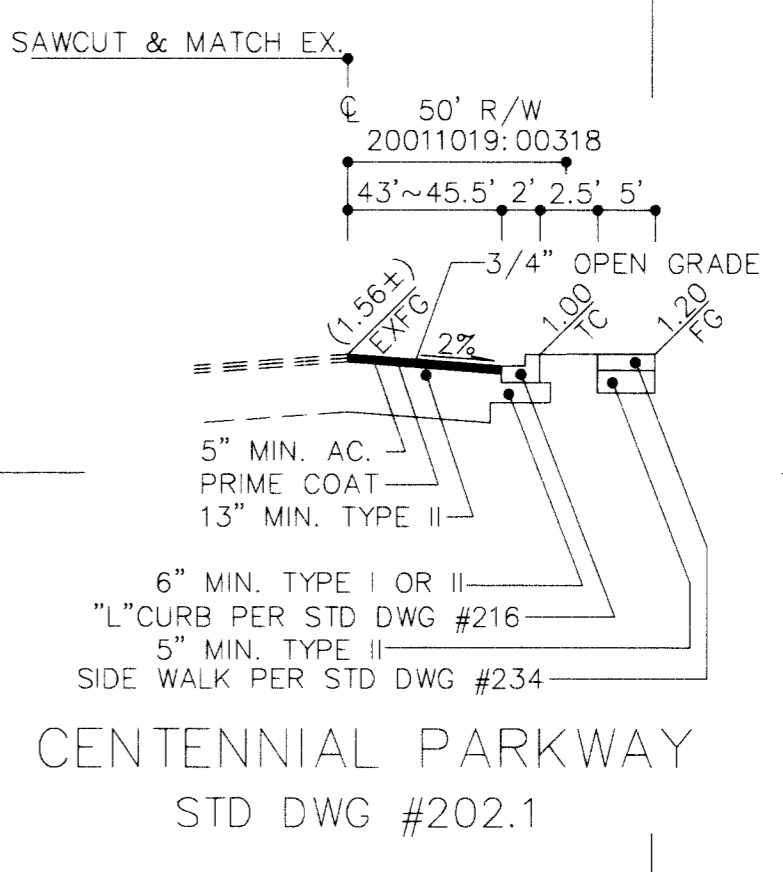
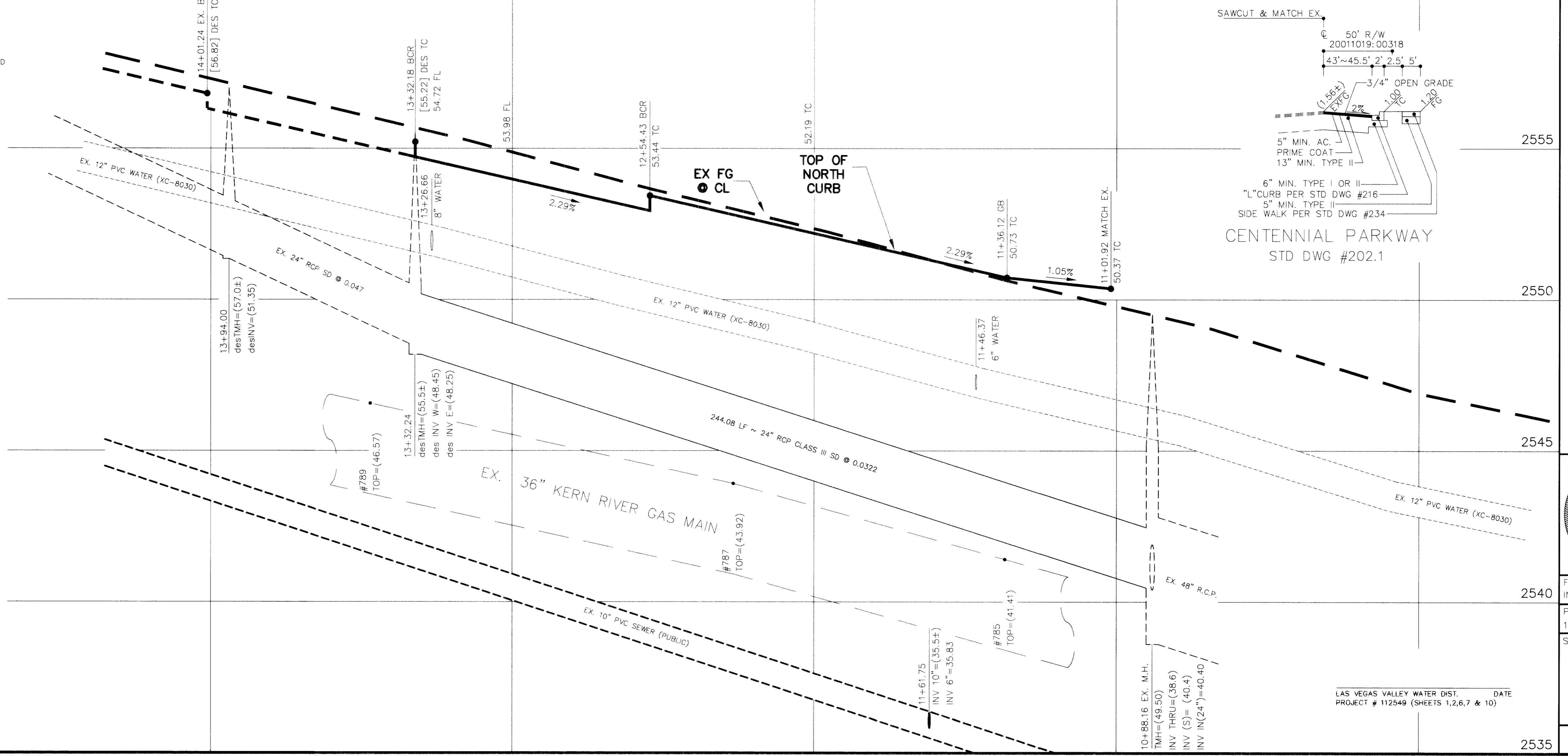
- CONSTRUCTION NOTES**
- INSTALL SIDEWALK PER STD DWG #234, w/ LIGHT GREY, BROOMED FINISH & 2'-6" SQUARE GRID PATTERN PER CLV TOWN CENTER DEVELOPMENT STD.S FIGURE 21
  - INSTALL SIDEWALK RAMP PER STD DWG #235 CASE II USING ARMOR TILE TRUNCATED DOMES OR APPROVED EQUAL FINISH PER PER CLV TOWN CENTER STD.S FIGURE 21
  - CURVE # SLOPE "A" "B"
  - C12 +2.73% 9.5 4.5
  - C13 +0.33% 8.0 8.0
  - C14 0.00% 8.0 8.0
  - INSTALL "L" TYPE CURB & CUTTER PER STD DWG #216
  - INSTALL "A" TYPE CURB PER STD DWG #219 (6" CURB FACE)
  - INSTALL CONCRETE SIDEWALK PER SOLS REPORT
  - PLANTER AREA
  - INSTALL TRASH ENCLOSURE PER DETAIL #7, SHT #12
  - SAW CUT & MATCH EX. AC PAVING
  - 12 EA. RISERS @ 6" ± EACH
  - DARK GREY CONCRETE PATTERN PER CLV TOWN CENTER STD.S FIGURE 21
  - INSTALL "A" TYPE CURB PER STD DWG #219 (0" CURB FACE)
  - WALL OPENING PER DETAIL #12, SHT #12
  - 1'-0" x 1'-0" RED CONCRETE PAVERS @ 45° ANGLE w/ 1'-0" LIGHT GREY SEALED CONCRETE BAND PER CLV TOWN CENTER DEVELOPMENT STANDARDS, FIGURE 21 SEE DETAIL #13, SHEET #12
  - INSTALL COMM. DRIVE PER STD DWG #222A & #225
  - INSTALL 8.0' CROSS GUTTER PER STD. DWG. #228
  - INSTALL AC PAVING PER SOILS REPORT
  - INSTALL 24" VALLEY GUTTER PER DETAIL #17, SHT #12
  - WHEEL STOPS REQUIRED, SEE NOTE #9, SHTS 8 & 9
  - CONCRETE FLUME PER DETAIL #19, SHT #12
  - AC PAVEMENT PATCH--SEE UTILITY PLAN(S)
  - ROUGH GRADE PAD ELEVATION IS 18" (1.5 FEET) BELOW FINISH FLOOR ELEVATION. VERIFY WITH STRUCTURAL PLANS PRIOR TO ANY CONSTRUCTION. REPORT ANY DISCREPANCY TO ENGINEER.

**BACK OF CURB CURVE TABLE**

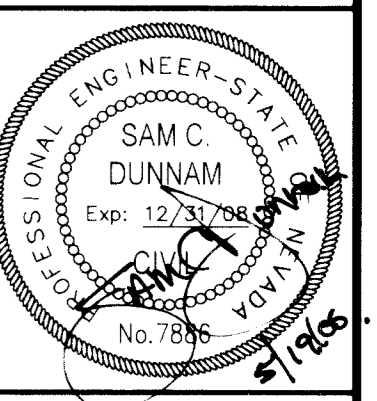
| CURVE  | RADIUS | DELTA      | ARC   | CHORD | TANGENT |
|--------|--------|------------|-------|-------|---------|
| C3@PL  | 50.00  | 83°38'12"  | 72.99 | 66.68 | 44.73   |
| C4     | 4.00   | 106°03'38" | 7.40  | 6.39  | 5.31    |
| C5     | 2.50   | 163°14'06" | 7.12  | 4.95  | 16.97   |
| C6     | 28.00  | 66°25'19"  | 32.46 | 30.67 | 18.33   |
| C7     | 3.00   | 113°34'41" | 5.95  | 5.02  | 4.58    |
| C8     | 2.00   | 90°00'00"  | 3.14  | 2.83  | 2.00    |
| C9     | 1.50   | 145°48'16" | 3.82  | 2.87  | 4.88    |
| C10    | 5.00   | 90°00'00"  | 7.85  | 7.07  | 5.00    |
| C11    | 5.00   | 90°00'00"  | 7.85  | 7.07  | 5.00    |
| C12    | 25.00  | 61°13'57"  | 26.72 | 25.46 | 14.79   |
| C13    | 15.00  | 102°51'02" | 26.93 | 23.45 | 18.81   |
| C14@PL | 54.00  | 57°59'47"  | 54.66 | 52.36 | 29.93   |
| C15    | 3.00   | 120°06'10" | 6.29  | 5.20  | 5.21    |
| C16    | 25.00  | 65°06'42"  | 28.41 | 26.91 | 15.96   |
| C17    | 2.00   | 114°53'17" | 4.01  | 3.37  | 3.13    |

106944  
98273

2535



**DURANGO AND CENTENNIAL CENTER**  
 PLAN & PROFILE - CENTENNIAL PARKWAY



FILE NAME: INTES1.S1.dwg  
 PLOT SCALE: 1" = 20'V / 1" = 2' H  
 SHEET

10  
 OF TWENTY FOUR  
 CLV DRAWING # 107V4754

13708

LAS VEGAS VALLEY WATER DIST. DATE PROJECT # 112549 (SHEETS 1,2,6,7 & 10)