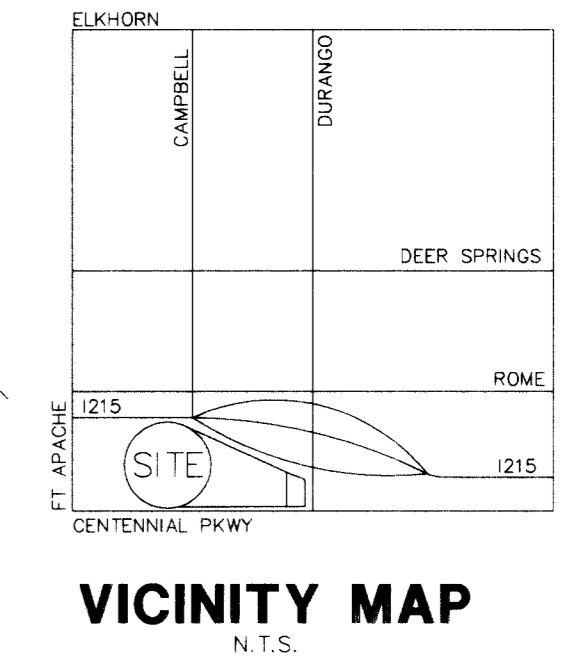
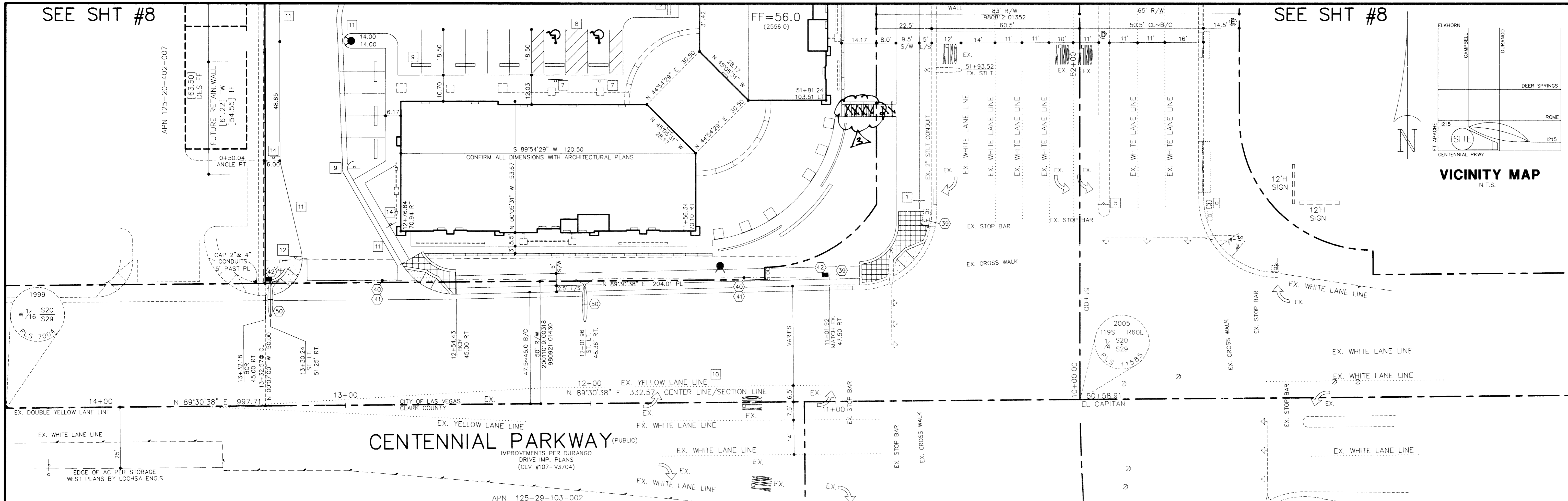


SEE SHT #8

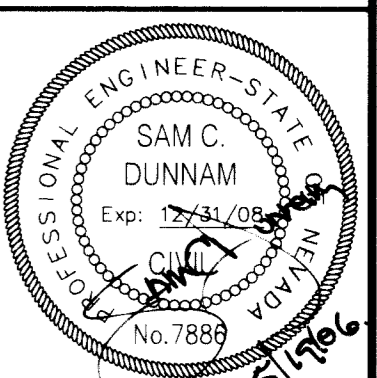
SEE SHT #8



NO.	DATE	REVISION
1	12-10-07	REMOVE STRIPES
2		REMOVE SIGN - R/L

**DUNNAM CIVIL ENGINEERS**  
 3471 WEST OJUEENDO ROAD SUITE 101  
 LAS VEGAS, NV 89118  
 (702) 798-1088 (702) 367-8145 FAX

**DURANGO AND CENTENNIAL CENTER TRAFFIC & STREETLIGHT PLAN (SOUTH)**



FILE NAME: INTESIT.dwg  
 PLOT SCALE: 1" = 20'  
 SHEET

9 OF TWENTY FOUR  
 CLV DRAWING # 10V4754

13708

**LEGEND & QUANTITY ESTIMATE**

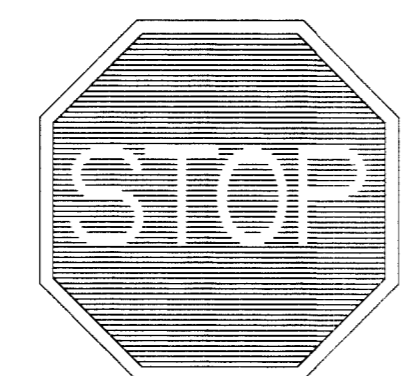
- 1 EX. R3-7R SIGN
  - 2 EX. R2-1(35) 35 M.P.H. SPEED LIMIT SIGN
  - 3 EX. R2-1(45) 45 M.P.H. SPEED LIMIT SIGN
  - 4 EX. WEST 215 SIGN
  - 5 EX. R4-7 SIGN
  - 6 INSTALL (30") R1-1 STOP SIGN 1 EA. & R3-5R RIGHT TURN ONLY SIGN 1 EA.
  - 7 INSTALL R7-8 SIGN 5 EA.
  - 8 INSTALL 4" WIDE WHITE STRIPES w/ 4" DIAGONALS @ 36" O.C. ACCESSIBLE ROUTE
  - 9 INSTALL CONCRETE BUMPER BLOCK PER STD DWG #238 28 EA.
  - 10 REPLACE PAVEMENT MARKINGS DESTROYED BY AC PAVING INSTALLATION
  - 11 PAINT CURB RED & STENCIL "FIRE LANE - NO PARKING" @ 50' O.C.
  - 12 INSTALL R1-1 "STOP SIGN" (30") 2 EA.
  - 13 INSTALL R6-1R SIGN 1 EA.
  - 14 "FIRE LANE/NO PARKING" SIGN 7 EA. SEE #14 DETAIL SHEET #13
  - 15 INSTALL PAVEMENT MARKING w/ COLD POLYMER FILM
  - 39 EX. BOX MARKED "STREET LIGHT"
  - 40 2" ST. LIGHT CONDUIT w/ WIRE (2 EA. #4, & 1 EA. #8) 236 LF
  - 41 4" PVC FAST CONDUIT w/ #8 BARE OR GREEN CONDUCTOR PER DWG #632G.03.01 "P-30" PULL BOX w/ "FIBER OPTIC 2 EA.
  - 50 250 WATT STREET LIGHT w/ 2 EA. AMERON POLE #BB1-26 OR APPROVED EQUAL PER TOWN CENTER STD.S FIG. 22
  - T PREFERRED NV. POWER TRANS. LOCATION
- EX. STREET LIGHT S.V.R.Z. (SITE VISIBILITY RESTRICTION ZONE) NOTHING OVER TWENTY-FOUR (24) INCHES IN HEIGHT (MEASURED FROM THE TOP OF THE ADJACENT CURB IF CURB EXISTS) WITHIN THE S.V.R.Z. (APPROVED OBJECTS AS SHOWN EXCEPTED)
- STREET LIGHT NOTE ALL HAND HOLE COVERS MUST BE INSTALLED, POLE CAPS POURED, AND PULL BOX LIDS BOLTED DOWN PRIOR TO ENERGIZING CIRCUIT. ALL WIRE MUST HAVE THW INSULATION.

**BASIS OF BEARINGS**

SOUTH 89°30'38" WEST, BEING THE SOUTH LINE OF THE SE 1/4 OF THE SW 1/4 OF SECTION 20, T. 19 S., R. 60 E. M.D.M., CITY OF LAS VEGAS, CLARK COUNTY, NEVADA PER A RECORD OF SURVEY ON FILE WITH THE CLARK COUNTY RECORDER IN FILE 123, PAGE 82.

**BENCHMARK**

CITY OF LAS VEGAS BENCHMARK #BLV90 29NNW6, BEING A RIVET AND PLATE IN CONCRETE WALL FOOTING, SOUTHEAST CORNER OF CENTENNIAL AND CAMPBELL. ELEVATION=785.8255 METERS (2578.16 FEET) NAVD 1988, CITY OF LAS VEGAS VERTICAL CONTROL 06-2002 ADD 2500' TO SHOWN SPOT ELEVATIONS. TOPOGRAPHY PROVIDED BY WESCO SURVEYS DATED NOVEMBER 2005.



6 R1-1 SIGN  
12



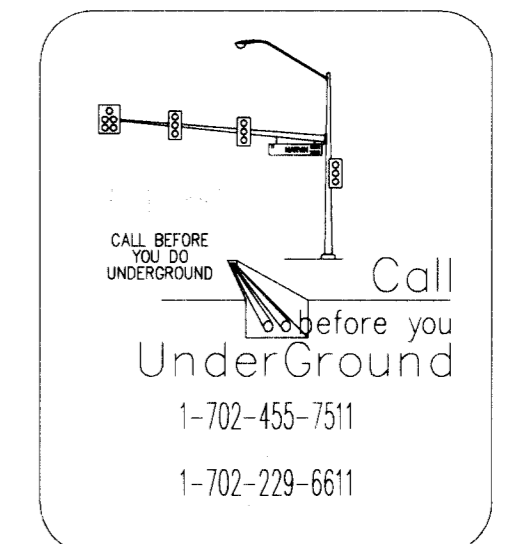
7 R7-8 SIGN



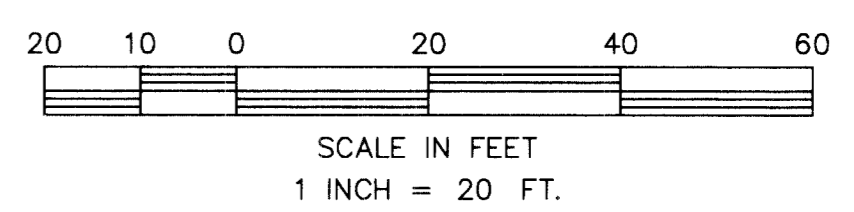
6 R3-5R SIGN



13 R6-1R SIGN



Call before you OVERHEAD 1-702-227-2929  
 AVOID CUTTING UNDERGROUND UTILITY LINES. IT'S COSTLY.  
 Call before you Dig 1-800-227-2600



106943  
98272