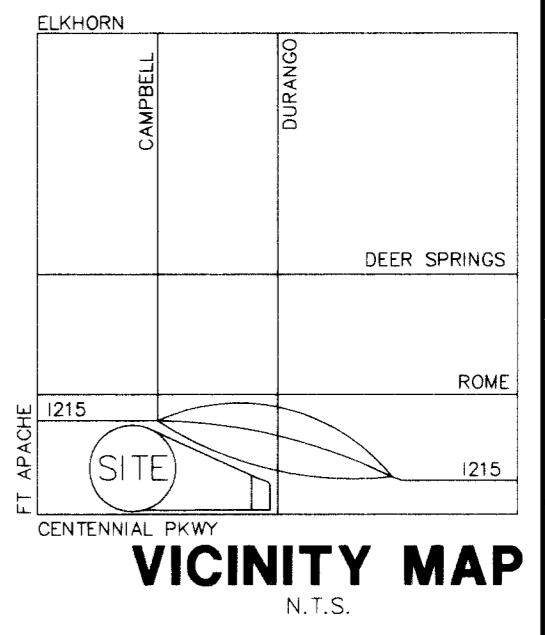
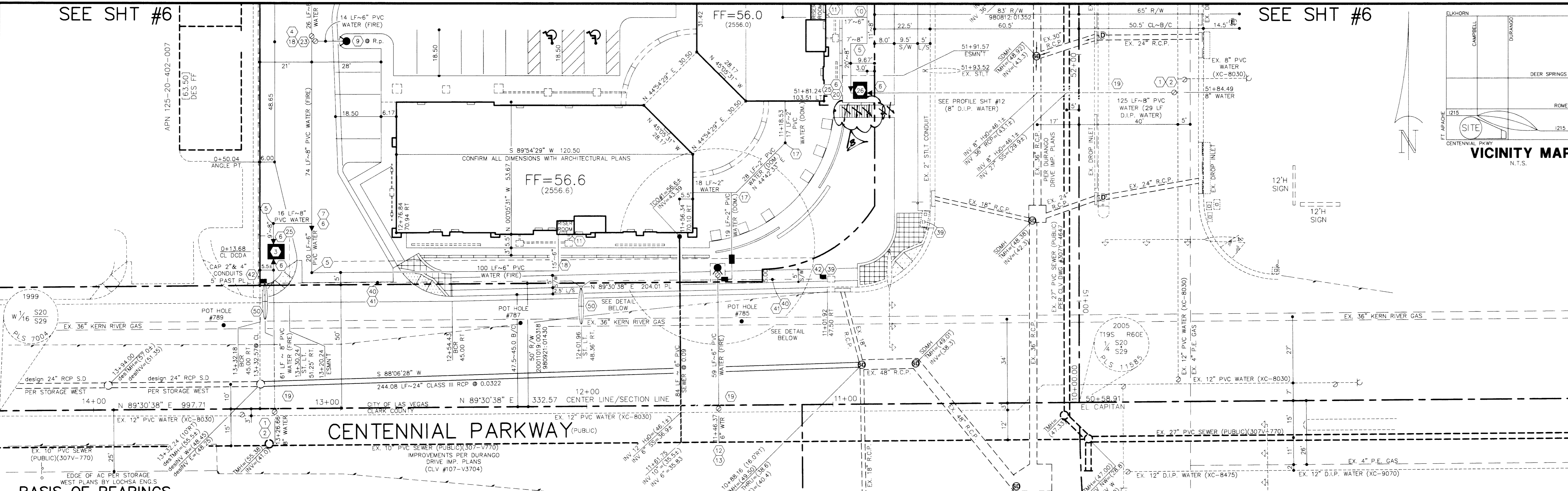


SEE SHT #6

SEE SHT #6



NO.	DATE	REVISION
1	12-07	REMOVE SACS - ADD 1/2\"/>
2		REMOVE SACS - RK

DUNNAM CIVIL ENGINEERS
 3471 WEST OQUENDO ROAD SUITE 101
 LAS VEGAS, NV 89118
 (702) 798-1088 (702) 367-8145 FAX

BASIS OF BEARINGS

SOUTH 89°30'38" WEST, BEING THE SOUTH LINE OF THE SE 1/4 OF THE SW 1/4 OF SECTION 20, T. 19 S., R. 60 E., M.D.M., CITY OF LAS VEGAS, CLARK COUNTY, NEVADA PER A RECORD OF SURVEY ON FILE WITH THE CLARK COUNTY RECORDER IN FILE 123, PAGE 82.

BENCHMARK

CITY OF LAS VEGAS BENCHMARK #BLV90 29NNW6, BEING A RIVET AND PLATE IN CONCRETE WALL FOOTING, SOUTHEAST CORNER OF CENTENNIAL AND CAMPBELL
 ELEVATION=785.8255 METERS (2578.16 FEET)
 NAVD 1988, CITY OF LAS VEGAS VERTICAL CONTROL 06-2002
 ADD 2500' TO SHOWN SPOT ELEVATIONS. TOPOGRAPHY PROVIDED BY WESCO SURVEYS DATED NOVEMBER 2005.

LEGEND & QUANTITY ESTIMATE

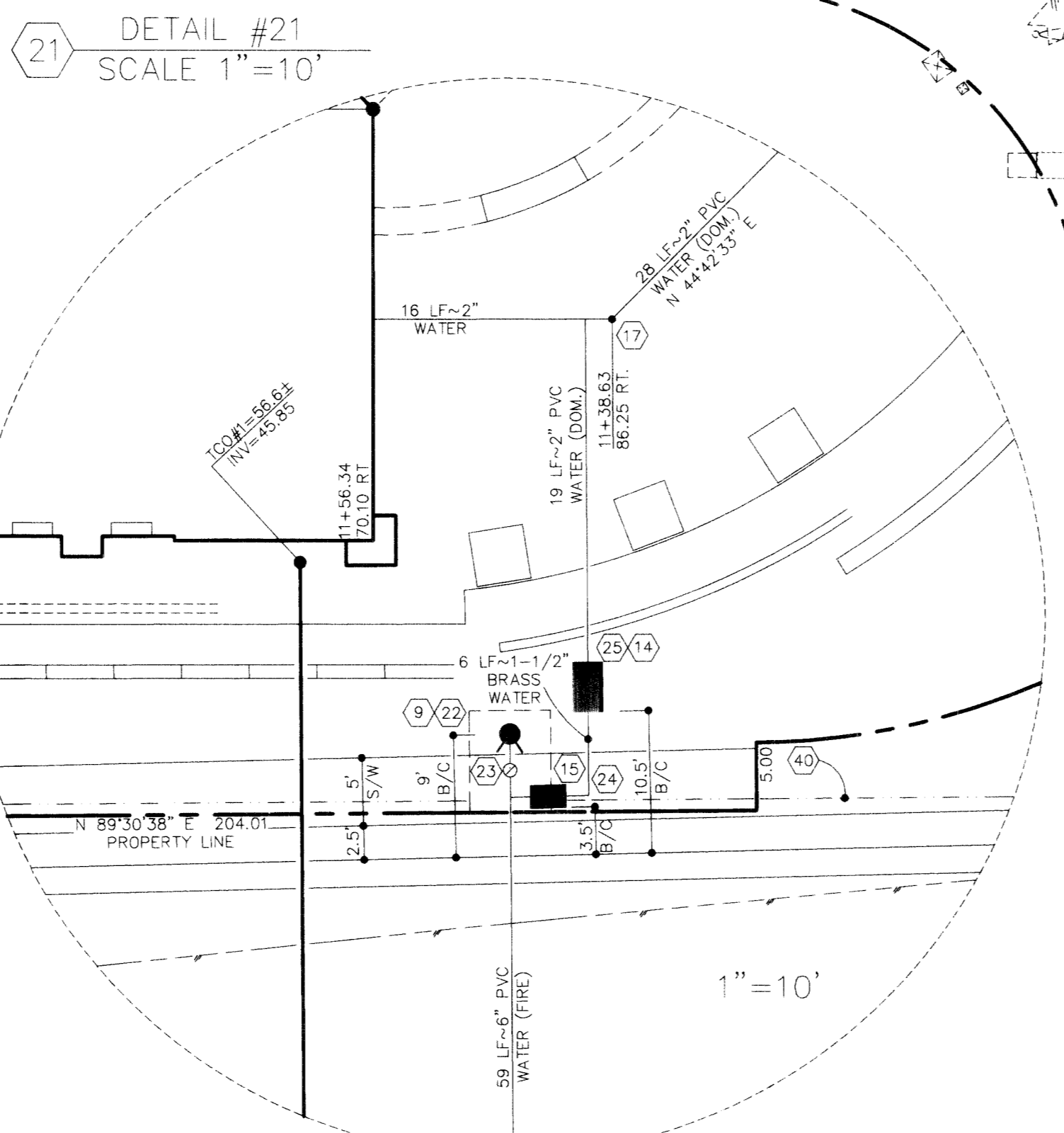
- 1 8" TAPPING VALVE 2 EA.
- 2 12" X 8" TAPPING SLEEVE 2 EA.
- 3 6" TYPE "N" UDACS PER UDACS PLATE #11-C 1 EA.
- 4 12" X 20" LVVWD EASEMENT
- 5 8" GATE VALVE 2 EA.
- 6 8" 90° BEND 4 EA.
- 7 8" X 6" REDUCER 7 EA.
- 8 8" TEE 3 EA.
- 9 8" 45° BEND 2 EA.
- 10 FIRE HYDRANT ASSY. PER UDACS PLATE #7 4 EA.
- 11 8" X 6" TEE 1 EA.
- 12 FIRE DEPARTMENT CONNECTION (FDC) LOCATED ON BUILDING 3 EA.
- 13 6" TAPPING VALVE 2 EA.
- 14 12" X 6" TAPPING SLEEVE 2 EA. PER UDACS STD. PLATE #22
- 15 1-1/2" RPPA PER UDACS PLATE #11-A 2 EA.
- 16 1-1/2" SERVICE SADDLE & 1-1/2" WATER METER PER UDACS PLATE #10 2 EA.
- 17 1.5" MIN. SEPARATION FROM VALVE TO SERVICE SADDLE
- 18 1-1/2" 45° BRASS BEND 2 EA.
- 19 2" 45° BEND 2 EA.
- 20 8" X 6" TEE 2 EA.
- 21 6" 45° BEND 1 EA.
- 22 6" X 7.5" LVVWD EASEMENT
- 23 6" GATE VALVE 3 EA.
- 24 1-1/2" 90° BRASS BEND 2 EA.
- 25 LOCATE 3"-0" MIN. BEHIND SIDEWALK & CONFORM TO TITLE 19.12.040 (E)
- 26 6" TYPE "N" UDACS PER UDACS PLATE #11-C 1 EA. w/ 11' X 13' LVVWD EASEMENT
- 27 EX. BOX MARKED "STREET LIGHT"
- 28 2" ST. LIGHT CONDUIT w/ WIRE 236 LF (2 EA. #4, & 1 EA. #8)
- 29 4" PVC FAST CONDUIT w/ #8 BARE OR 236 LF
- 30 GREEN CONDUCTOR PER DWG #632G.03.01
- 31 "P-30" PULL BOX w/ FIBER OPTIC 2 EA.
- 32 250 WATT STREET LIGHT w/ 2 EA. AMERON POLE #81-26 OR APPROVED EQUAL PER TOWN CENTER STD.S FIG. 22
- 33 EXIST. ELECTRICAL VAULT
- 34 EX. STREET LIGHT

106941
98270

THIS PROPERTY MAY HAVE STATIC WATER PRESSURE IN EXCESS OF 80 PSI. THE UNIFORM PLUMBING CODE REQUIRES THAT INDIVIDUAL ON-SITE (PRIVATE), PRESSURE REDUCING VALVES BE INSTALLED WHENEVER THE PRESSURE EXCEEDS 80 PSI. PRV'S ARE THE DEVELOPER'S RESPONSIBILITY, AND WILL NOT BE INSPECTED OR INCLUDED IN THE ACCEPTANCE OF LVVWD FACILITIES. ESN-041 Revised 6/1/04

DOUBLE CHECK DETECTOR ASSEMBLY (DCCA) 2 EA. - 6"
 THE DOUBLE CHECK DETECTOR ASSEMBLIES SHALL BE INSTALLED IN ACCORDANCE WITH THE UDACS PLATE NO. 11C.
 ANY BLOCK WALL OR OTHER FENCE MATERIAL SHALL BE DESIGNED AND CONSTRUCTED AROUND THE OUTSIDE OF THE EASEMENT(S) SO AS TO ALLOW THE DISTRICT ACCESS FROM THE ADJACENT RIGHT-OF-WAY.
 EASEMENTS SHALL BE CLEARLY MARKED OR STAKED PRIOR TO THE START OF CONSTRUCTION. ESN-006 Revised 6/1/04

REDUCED PRESSURE PRINCIPLE ASSEMBLY (2) 1-1/2"
 APPROVED REDUCED PRESSURE PRINCIPLE ASSEMBLY(S) SHALL BE INSTALLED PER THE UDACS PLATE NO. 11A. NO WATER SHALL BE TAKEN FROM A SERVICE REQUIRING BACKFLOW PREVENTION UNTIL THE REDUCED PRESSURE PRINCIPLE ASSEMBLY HAS BEEN SUCCESSFULLY TESTED BY THE LVVWD.



**EL CAPITAN WAY
(A.K.A. DURANGO DRIVE)**
 IMPROVEMENTS PER DURANGO (CLV #107-V3704)

OBTAIN ENCROACHMENT PERMIT FROM CLARK COUNTY CIVIL ENGINEERING (455-4600) FOR WORK IN CENTENNIAL PARKWAY (SOUTH SIDE)

CONSTRUCTION NOTE

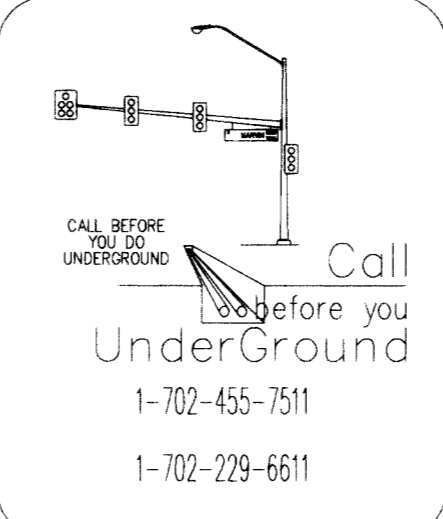
ALL EXISTING UTILITY STRUCTURES WITHIN CONSTRUCTION AREA SHALL BE ADJUSTED TO MATCH FINISH GRADE (I.E., W. BOX, WMH, ANNOCE BOX, FH, TEL BOX, ETC.)

ON-SITE SEWER TO BE INSTALLED PER "2000 UPC"

SEWER CONTRIBUTION
 AVERAGE FLOW = 0.0016 MGD
 PEAK FLOW = 0.0056 MGD

LAS VEGAS FIRE DEPT.
 FIRE FLOW REQUIREMENT IS: 1750 gallons per minute at 20 psi residual pressure.

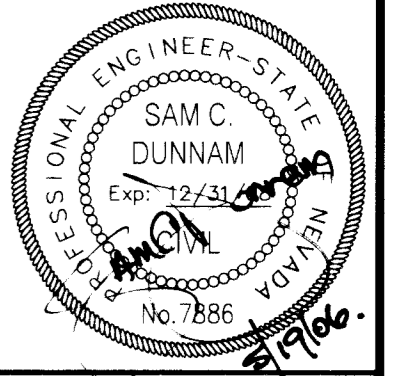
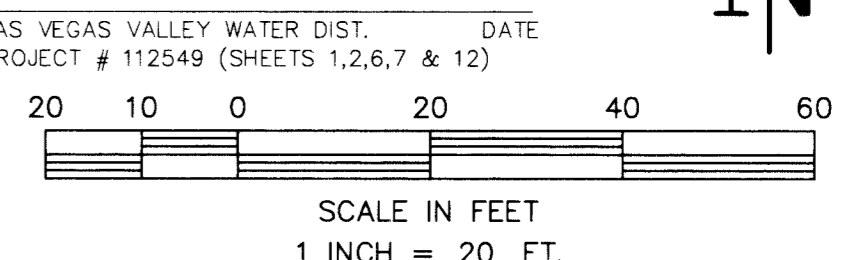
BASED ON:
 SQUARE FOOTAGE: 16,508 square feet
 LARGEST AREA BETWEEN 4-HOUR AREA SEPARATION WALLS: 16,508 square feet
 BUILDING HEIGHT: 26'-0" feet
 NUMBER OF STORIES: ONE floor
 TYPE OF CONSTRUCTION: Y-R
 OCCUPANCY: M (RETAIL)
 FULL AUTOMATIC FIRE SPRINKLER SYSTEM: YES



Call before you OVERHEAD
 1-702-227-2929
 AVOID CUTTING UNDERGROUND UTILITY LINES. IT'S COSTLY

Call before you Dig
 1-702-455-7511
 1-702-229-6611
 1-800-227-2600

192606
 DATE 12/23/06
 FIRE FLOW = 1750 GPM
 PRESSURE ZONE = 2745



FILE NAME: INTES1U.dwg
 PLOT SCALE: 1" = 20'
 SHEET

7
 OF TWENTY FOUR
 CLV DRAWING # 1019.4754