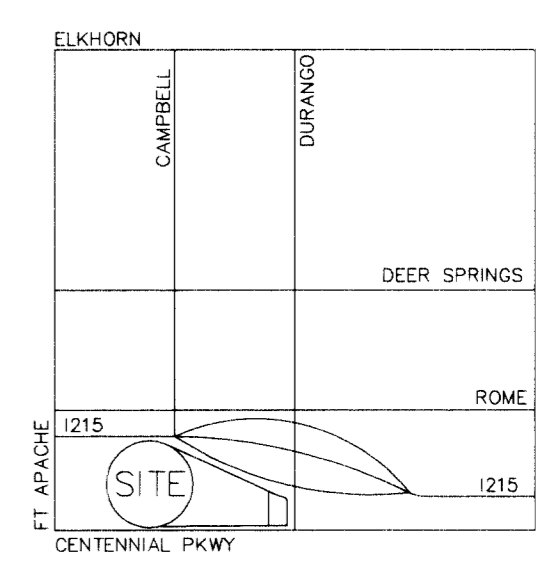
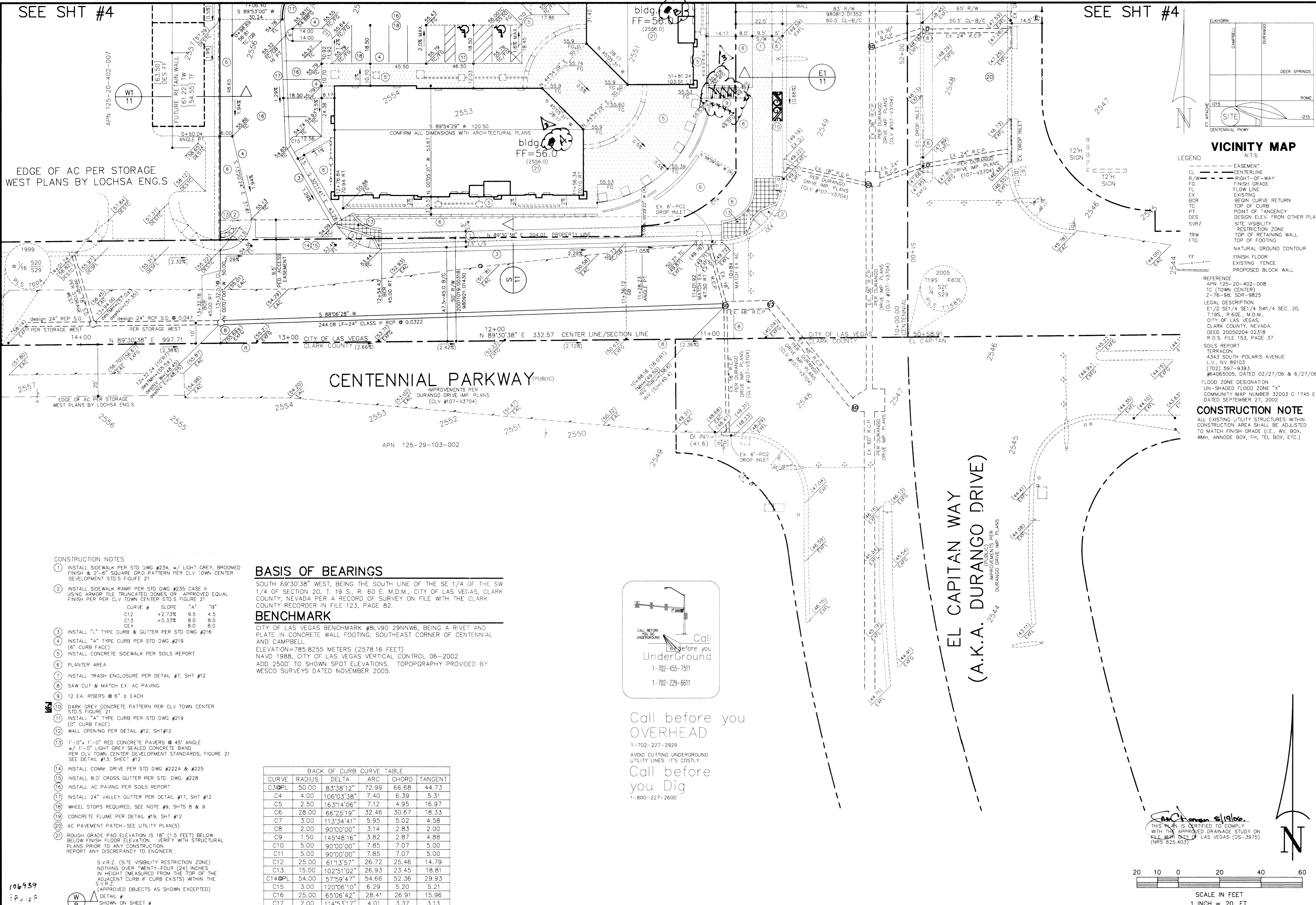


SEE SHT #4

SEE SHT #4



- LEGEND**
- CL - CENTERLINE
  - R/W - RIGHT-OF-WAY
  - FG - FINISH GRADE
  - FL - FLOW LINE
  - EX - EXISTING
  - BCR - BEGIN CURVE RETURN
  - TC - TOP OF CURB
  - PT - POINT OF TANGENCY
  - DES - DESIGN ELEV. FROM OTHER PLANS
  - SVRZ - SITE VISIBILITY RESTRICTION ZONE
  - TRW - TOP OF RETAINING WALL
  - FTG - TOP OF FOOTING
  - FF - FINISH FLOOR
  - EXG - EXISTING
  - PRP - PROPOSED
- N.T.S.**

**REFERENCE**  
 APN 125-20-402-008  
 TC (TOWN CENTER)  
 2-76-98, SDR-9825

**LEGAL DESCRIPTION**  
 E1/2 SE1/4 SE1/4 SW1/4 SEC. 20,  
 T19S., R.60E., M.D.M.,  
 CITY OF LAS VEGAS,  
 CLARK COUNTY, NEVADA.  
 DEED 20050204-02318  
 R.O.S. FILE 153, PAGE 37

**SOILS REPORT**  
 TERRACON  
 4343 SOUTH POLARIS AVENUE  
 L.V., NV 89103  
 (702) 597-9393  
 #R405005, DATED 02/27/06 & 6/27/06

**FLOOD ZONE DESIGNATION**  
 UN-SHADED FLOOD ZONE "X"  
 COMMUNITY MAP NUMBER 32003 C 1745 E  
 DATED SEPTEMBER 27, 2002

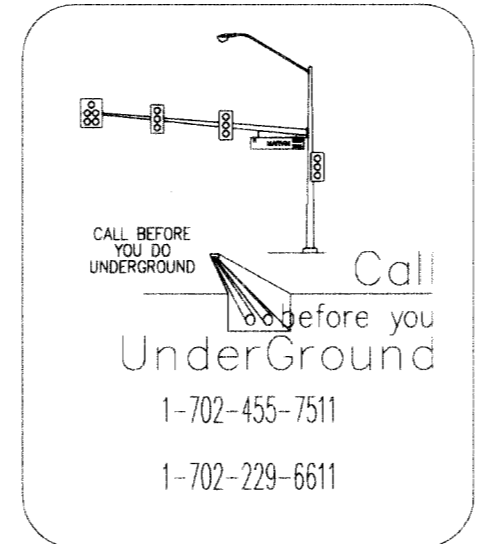
**CONSTRUCTION NOTE**  
 ALL EXISTING UTILITY STRUCTURES WITHIN CONSTRUCTION AREA SHALL BE ADJUSTED TO MATCH FINISH GRADE (I.E., W/ BOX, W/M, ANNODE BOX, FM, TEL BOX, ETC.)

- CONSTRUCTION NOTES**
- INSTALL SIDEWALK PER STD DWG #234, w/ LIGHT GREY, BROOMED FINISH & 2'-6" SQUARE GRID PATTERN PER CLV TOWN CENTER DEVELOPMENT STD.S FIGURE 21
  - INSTALL SIDEWALK RAMP PER STD DWG #235 CASE II USING ARMOR TILE TRUNCATED DOWNS OR APPROVED EQUAL FINISH PER PER CLV TOWN CENTER STD.S FIGURE 21
  - INSTALL "L" TYPE CURB & GUTTER PER STD DWG #216
  - INSTALL "A" TYPE CURB PER STD DWG #219 (6" CURB FACE)
  - INSTALL CONCRETE SIDEWALK PER SOILS REPORT
  - PLANTER AREA
  - INSTALL TRASH ENCLOSURE PER DETAIL #7, SHT #12
  - SAW CUT & MATCH EX. AC PAVING
  - 12 EA. RISERS @ 6" ± EACH
  - DARK GREY CONCRETE PATTERN PER CLV TOWN CENTER STD.S FIGURE 21
  - INSTALL "A" TYPE CURB PER STD DWG #219 (0" CURB FACE)
  - WALL OPENING PER DETAIL #12, SHT #12
  - 1'-0" x 1'-0" RED CONCRETE PAVERS @ 45° ANGLE w/ 1'-0" LIGHT GREY SEALED CONCRETE BAND PER CLV TOWN CENTER DEVELOPMENT STANDARDS, FIGURE 21 SEE DETAIL #13, SHEET #12
  - INSTALL COMM. DRIVE PER STD DWG #222A & #225
  - INSTALL 8.0" CROSS GUTTER PER STD. DWG. #228
  - INSTALL AC PAVING PER SOILS REPORT
  - INSTALL 24" VALLEY GUTTER PER DETAIL #17, SHT #12
  - WHEEL STOPS REQUIRED, SEE NOTE #9, SHTS B & 9
  - CONCRETE FLUME PER DETAIL #19, SHT #12
  - AC PAVEMENT PATCH-SEE UTILITY PLANS(S)
  - ROUGH GRADE PAD ELEVATION IS 18" (1.5 FEET) BELOW BELOW FINISH FLOOR ELEVATION. VERIFY WITH STRUCTURAL PLANS PRIOR TO ANY CONSTRUCTION. REPORT ANY DISCREPANCY TO ENGINEER.
- S.V.R.Z. (SITE VISIBILITY RESTRICTION ZONE) NOTHING OVER TWENTY-FOUR (24) INCHES IN HEIGHT (MEASURED FROM THE TOP OF THE ADJACENT CURB IF CURB EXISTS) WITHIN THE S.V.R.Z. (APPROVED OBJECTS AS SHOWN EXCEPTED)
- DETAIL # SHOWN ON SHEET #

**BASIS OF BEARINGS**  
 SOUTH 89°30'38" WEST, BEING THE SOUTH LINE OF THE SE 1/4 OF THE SW 1/4 OF SECTION 20, T. 19 S., R. 60 E. M.D.M., CITY OF LAS VEGAS, CLARK COUNTY, NEVADA PER A RECORD OF SURVEY ON FILE WITH THE CLARK COUNTY RECORDER IN FILE 123, PAGE 82.

**BENCHMARK**  
 CITY OF LAS VEGAS BENCHMARK #8LV90 29NNW6, BEING A RIVET AND PLATE IN CONCRETE WALL FOOTING, SOUTHEAST CORNER OF CENTENNIAL AND CAMPBELL.  
 ELEVATION=785.8255 METERS (2578.16 FEET)  
 NAVD 1988, CITY OF LAS VEGAS VERTICAL CONTROL 06-2002  
 ADD 2500' TO SHOWN SPOT ELEVATIONS. TOPOGRAPHY PROVIDED BY WESCO SURVEYS DATED NOVEMBER 2005.

CURVE	RADIUS	DELTA	ARC	CHORD	TANGENT
C3@PL	50.00	83°38'12"	72.99	66.68	44.73
C4	4.00	108°03'38"	7.40	6.39	5.31
C5	2.50	163°14'06"	7.12	4.95	16.97
C6	28.00	66°25'19"	32.46	30.67	18.33
C7	3.00	113°34'41"	5.95	5.02	4.58
C8	2.00	90°00'00"	3.14	2.83	2.00
C9	1.50	145°48'16"	3.82	2.87	4.88
C10	5.00	90°00'00"	7.85	7.07	5.00
C11	5.00	90°00'00"	7.85	7.07	5.00
C12	25.00	61°13'57"	26.72	25.46	14.79
C13	15.00	102°51'02"	26.93	23.45	18.81
C14@PL	54.00	57°59'47"	54.66	52.36	29.93
C15	3.00	120°06'10"	6.29	5.20	5.21
C16	25.00	65°06'42"	28.41	26.91	15.96
C17	2.00	114°53'17"	4.01	3.37	3.13

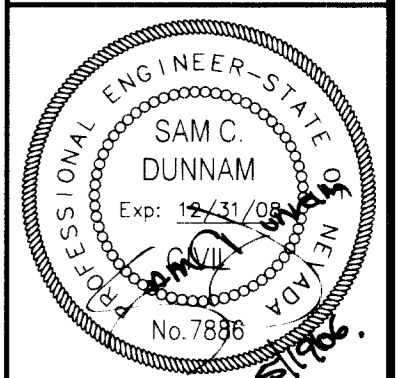


Call before you **OVERHEAD**  
 1-702-227-2929  
 AVOID CUTTING UNDERGROUND UTILITY LINES. IT'S COSTLY  
 Call before you **DIG**  
 1-800-227-2600

NO.	DATE	REVISION
3	12-10-07	DESIGN STAIRS 401/5
		REWORK PLAN - RK

**DUNNAM CIVIL ENGINEERS**  
 3471 WEST DURANGO ROAD SUITE 101  
 LAS VEGAS, NV 89118  
 (702) 798-1088 (702) 367-8145 FAX

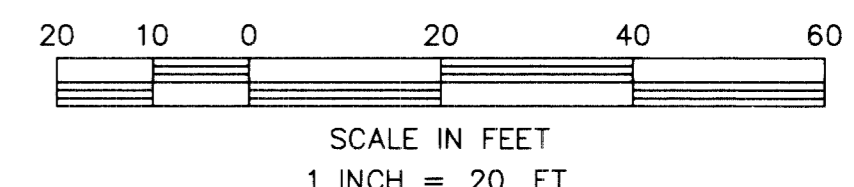
**DURANGO AND CENTENNIAL CENTER GRADING PLAN (SOUTH)**



FILE NAME: INTE51C.dwg  
 PLOT SCALE: 1" = 20"  
 SHEET

5 OF TWENTY FOUR  
 CLV DRAWING # 1074454

106939  
 9/2/07



13708