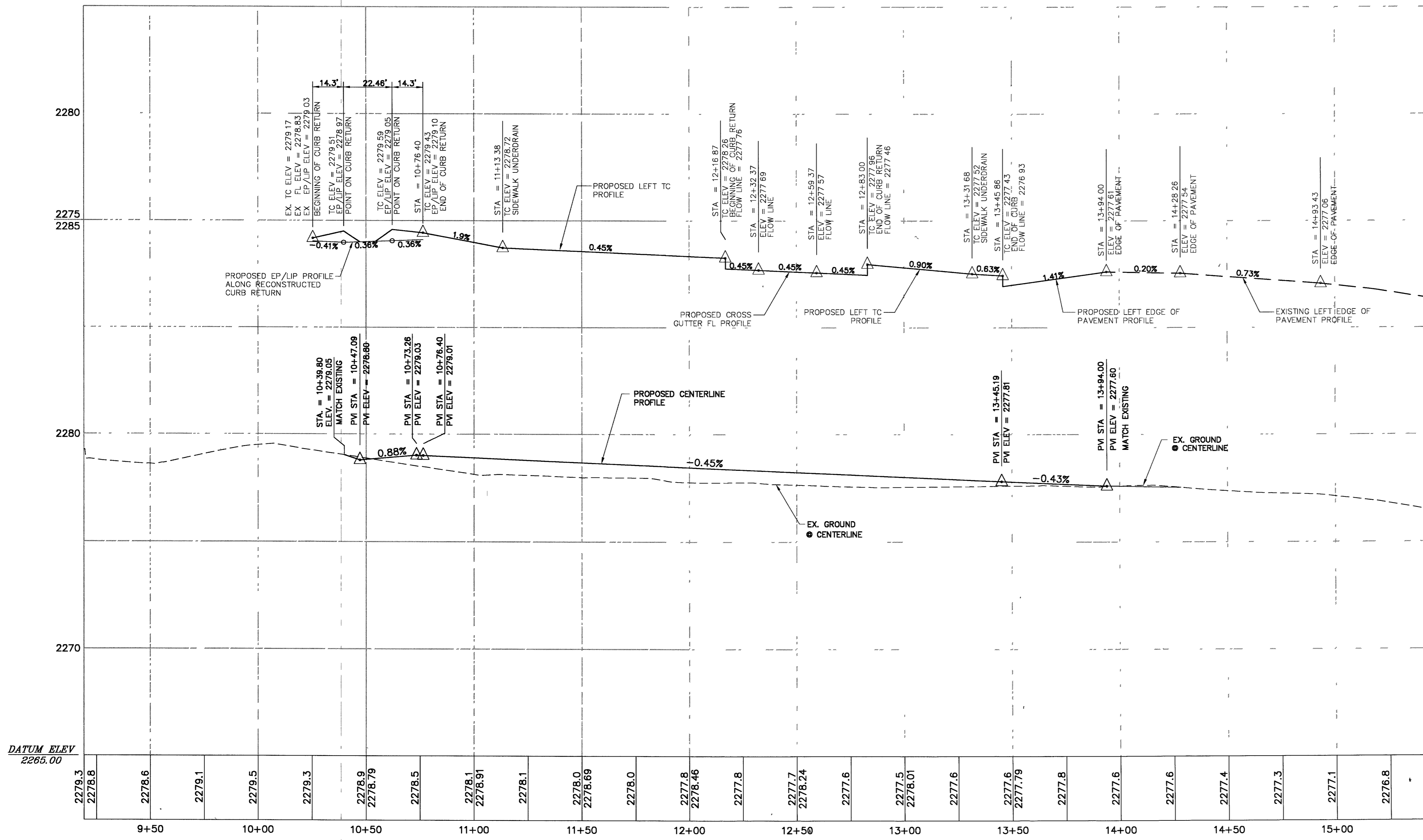


PLAN - LA MADRE WAY

SCALE: HORIZ.: 1" = 20'



PROFILE - LA MADRE WAY

SCALE: HORIZ.: 1" = 20'

**GRADING CONSTRUCTION NOTES**

- 1 SAWCUT EXISTING AC PAVEMENT AND MATCH EXISTING.
- 2A CONSTRUCT "L" TYPE CURB AND GUTTER PER USD NO. 216.
- 2B CONSTRUCT "L" TYPE CURB AND GUTTER PER USD NO. 216, BUT WITH NON-HOLDING PAN. REFER ALSO TO "L" TYPE ISLAND CURB PER USD NO. 219. PROVIDE 5' TRANSITION FROM HOLDING PAN TO NON-HOLDING PAN.
- 3 CONSTRUCT CONCRETE SIDEWALK PER USD. NO. 234.
- 4 CONSTRUCT 3" AC PAVEMENT OVER 5" TYPE II AGGREGATE BASE. SCARIFY AND RECOMPACT TOP 12" OF EXPOSED SOIL TO MIN. 95% DENSITY PER GEOTECHNICAL REPORT (OFF-SITE).
- 5 REMOVE EXISTING AC PAVEMENT.
- 6 CONSTRUCT SIDEWALK RAMP WITH DETECTABLE TACTILE WARNINGS PER USD NO. 235, CASE 1.
- 7 CONSTRUCT CONCRETE CROSS GUTTER AND SPANDRELS PER USD NO. 228 FOR COMMERCIAL DRIVEWAY PER USD NO. 222A & 225.
- 8 CONSTRUCT CURB RETURN & SPANDREL WITH MODIFICATIONS AS SHOWN.
- 9 REMOVE EXISTING BLOCK WALL (APPRX. 5'-WESTSIDE AND 17'-EASTSIDE) RECONSTRUCT WALL END COLUMN OUTSIDE OF BACK OF WALK RETURN POINT.
- 10 REMOVE CONCRETE FOR GATE TRACK.
- 11 RECONSTRUCT CONCRETE WITH NEW GATE TRACK PER GATE MANUFACTURES SPECIFICATIONS.
- 12 REMOVE & REPLACE EXISTING GATE WITH NEW GATE TO ACCOMMODATE INCREASED ACCESS WIDTH. CONTRACTOR TO COORDINATE WITH OWNER FOR STYLE AND TYPE OF GATE.
- 13 REGRADE DRIVEWAY APPROACH APPROXIMATELY 25' BACK TO PROVIDE SMOOTH ACCESS. RECOMPACT MATERIAL TO MINIMUM 95% DENSITY.
- 14 PROVIDE DUST CONTROL CHAT MATERIAL (1/4" MINUS CRUSHED ROCK)
- 15 CONSTRUCT CONCRETE LANDING PER ARCHITECTURAL PLANS.
- 16 CONSTRUCT 2' WIDE CONCRETE CHANNEL PER DETAIL 5, SHEET C7. PROVIDE 2' LONG TRANSITION FROM 4' WIDE TO 2' WIDE BEYOND BLOCK OPENING.
- 17 CONSTRUCT UNDER SIDEWALK DRAIN PER USD NO. 236.
- 18 PAINT 4" WHITE STRIPE FOR PARKING STALL.
- 19 CONSTRUCT MODIFIED "A" TYPE CURB PER DETAIL 4, SHEET C7.
- 20 CONSTRUCT 3" AC PAVEMENT OVER 5" TYPE II AGGREGATE BASE.
- 21 SCARIFY AND RECOMPACT TOP 12" OF EXPOSED SOIL TO MIN. 95% DENSITY PER GEOTECHNICAL REPORT. (ON-SITE)
- 22 INSTALL PRECAST BUMPERS PER USD NO. 238
- 23 CONSTRUCT 6" LONG CONCRETE RAMP AT 1:12 (8.33%) MAX. SLOPE AS REQUIRED.
- 24 GRADE FROM LANDING TO DAYLIGHT (3:1 MAX)
- 25 CONSTRUCT STEPS, RAILING, & RETAINING WALL PER ARCHITECTURAL PLANS.
- 26 INSTALL GLUE DOWN TRUNCATED DOME MATT ON EXISTING SIDEWALK RAMP PER USD 235.
- 27 REMOVE EXISTING CONCRETE AND AC PAVEMENT AS REQUIRED FOR CONSTRUCTION OF ASPHALT ADA COMPLIANT PATHWAY FROM PROPOSED BUILDING TO FRONT OF EXISTING BUILDING. NEW ADA ACCESSIBLE PATHWAY TO BE 4' WIDE MINIMUM, 2% TRANSVERSE SLOPE MAXIMUM, 5% LONGITUDINAL SLOPE MAXIMUM. TRANSITION PROPOSED EDGE OF ADA PATHWAY TO EXISTING CONCRETE OR PAVEMENT AT MAXIMUM OF 12:1 SLOPE.
- 28 REMOVE EXISTING BOLLARD

**UTILITY CAUTION NOTE**

EXISTING UTILITY LOCATIONS SHOWN HEREON ARE APPROXIMATE ONLY. IT SHALL BE THE CONTRACTOR'S RESPONSIBILITY TO DETERMINE THE EXACT HORIZONTAL AND VERTICAL LOCATION OF ALL EXISTING UNDERGROUND AND OVERHEAD UTILITIES PRIOR TO COMMENCING CONSTRUCTION. NO REPRESENTATION IS MADE THAT ALL EXISTING UTILITIES ARE SHOWN HEREON. THE CONTRACTOR IS RESPONSIBLE FOR TAKING ALL APPROPRIATE PRECAUTIONARY MEASURES TO PROTECT EXISTING UTILITY LINES AND STRUCTURES BEFORE BEGINNING EXCAVATION. THE ENGINEER ASSUMES NO RESPONSIBILITY FOR UTILITIES NOT SHOWN OR UTILITIES NOT SHOWN IN THEIR PROPER LOCATION. CALL BEFORE YOU DIG: 1(800)227-2600

**NOTE TO CONTRACTOR**

IT IS THE RESPONSIBILITY OF THE CONTRACTOR TO LOCATE ALL FEATURES ASSOCIATED WITH ABOVE AND BELOW GROUND UTILITIES, SUCH AS FIRE HYDRANTS, WATER & GAS VALVES, METER BOXES, PULL BOXES, VAULTS, MANHOLES, POWER POLES, STREET LIGHT POLES, ETC. CONSIDERED INCIDENTAL TO THE CONSTRUCTION OF THESE IMPROVEMENTS, THE CONTRACTOR SHALL ADJUST TO FINISHED GRADE ALL OF THE ABOVE MENTIONED FEATURES AND ANY NOT MENTIONED. THE CONTRACTOR SHALL BE RESPONSIBLE FOR OBTAINING THE APPLICABLE PERMITS AND PERMISSIONS FROM THE APPROPRIATE AGENCIES PRIOR TO COMMENCING CONSTRUCTION.

**BASIS OF BEARINGS**

NORTH 00°25'04" EAST, BEING THE WEST LINE OF SECTION 36, TOWNSHIP 19 SOUTH, RANGE 60 EAST, M.D.M. AS SHOWN BY MAP THEREOF ON FILE IN FILE 11 OF SURVEYS, PAGE 39 IN THE COUNTY RECORDER'S OFFICE, CLARK COUNTY, NEVADA.

**BENCHMARK**

CITY OF LAS VEGAS VERTICAL CONTROL NO. 8LV90 36SW6 A RIVET AND PLATE SET IN THE TOP OF CURB AT THE NORTHEAST CORNER OF LA MADRE WAY AND LEON AVE.

ELEVATION: 2268.78 (FEET) NAVD88  
691.5265 (METERS) NAVD88

**LEGEND**

PROPOSED 3.5" AC PAVEMENT

Call before you Dig  
1-800-227-2600  
UNDERGROUND SERVICE (USA)

CALL BEFORE YOU CRANE  
1-702-227-2929  
CLV #107V4743

REV. BY	APPR.	DESCRIPTION	DATE
7A-5			7/12/06

**SPECTRUM**  
SURVEYING & ENGINEERING  
7351 W. CHARLESTON BLVD., SUITE 120  
LAS VEGAS, NEVADA 8917  
OFFICE (702) 967-7705  
FAX: (702) 967-8733

**DEVELOPER**  
SR CONSTRUCTION CO.  
9579 RED ROCK STREET  
LAS VEGAS, NV 89103  
PHONE: (702) 877-6111  
FAX: (702) 258-6326

**DESERT PINES EQUINE ADDITION**  
**PLAN & PROFILE - LA MADRE WAY**  
APN# 125-36-302-005  
5000 NORTH JONES BOULEVARD  
LAS VEGAS, NV 89130

Professional Engineer Seal for Randolph A. Skorpinski, License No. 14985, dated 7/12/06.

ENGINEER'S SEAL	
CITY PLAN#	COUNTY PLAN#
STATE PLAN#	DATE:
JOB NO.:	DRAWN BY:
CHECKED BY:	SCALE:
SHEET 08	1" = 30'