

**UTILITY STATEMENT**

THE UNDERGROUND UTILITIES SHOWN HAVE BEEN LOCATED FROM FIELD SURVEY INFORMATION AND EXISTING DRAWINGS. THE ENGINEER MAKES NO GUARANTEES THAT THE UNDERGROUND UTILITIES SHOWN ON THESE PLANS COMPRISE ALL SUCH UTILITIES IN THE AREA, EITHER IN SERVICE OR ABANDONED. THE ENGINEER FURTHER DOES NOT WARRANT THAT THE UNDERGROUND UTILITIES SHOWN ARE IN THE EXACT LOCATION INDICATED ALTHOUGH HE DOES CERTIFY THAT THEY ARE LOCATED AS ACCURATELY AS POSSIBLE FROM INFORMATION AVAILABLE. IT IS THE CONTRACTOR'S RESPONSIBILITY TO DETERMINE THE EXACT VERTICAL AND HORIZONTAL LOCATION OF THE EXISTING UNDERGROUND UTILITIES IN THE FIELD PRIOR TO COMMENCING CONSTRUCTION.

**UTILITY CROSSING NOTE**

WHERE WATER AND SEWER ARE CROSSING, THE CONTRACTOR SHALL ENSURE COMPLIANCE WITH LVWD GENERAL NOTE 8 AS SHOWN ON SHEET C2. CONTRACTOR IS RESPONSIBLE TO QUANTIFY ANY ADDITIONAL REQUIREMENTS THIS NOTE REQUIRES PRIOR TO BIDDING. IF ANY CONFLICTS DO EXIST, THE CONTRACTOR IS TO NOTIFY THE ENGINEER IMMEDIATELY.

- 1 2" METER - UDACS PLATE NO. 1-D
- 2 2" RPPA - UDACS PLATE NO. 11-A
- 3 10" DCDA - UDACS PLATE NO. 20-B
- 4 10" WATER - PVC (FIRE)
- 5 4" WATER - PVC (DOMESTIC)
- 6 2" WATER - PVC (DOMESTIC) COPPER
- 7 FIRE HYDRANT - UDACS PLATE NO. 7
- 8 8" GATE VALVE - UDACS PLATE NO. 8
- 9 4" GATE VALVE - UDACS PLATE NO. 8
- 10 10" GATE VALVE - UDACS PLATE NO. 8
- 11 10"x8"x10" TEE W/THRUST BLOCKS
- 12 10" 90° BEND W/THRUST BLOCKS

- 13 10" MJ TAPPING SLEEVE W/10" TAPPING VALVE W/THRUST BLOCKS
- 14 4"x4"x4" TEE W/THRUST BLOCKS
- 15 4" 90° BEND W/THRUST BLOCKS
- 16 2" SERVICE SADDLE
- 17 2" 90° BEND W/THRUST BLOCKS
- 18 4" WATER - PVC (SERVICE)
- 19 6"x6"x6" TEE W/ THRUST BLOCKS
- 20 8" GATE VALVE - UDACS PLATE NO. 8
- 21 6" WATER - PVC (FIRE)
- 22 6" MJ TAPPING SLEEVE W/6" TAPPING VALVE W/THRUST BLOCKS
- 23 14" MJ TAPPING SLEEVE W/14" TAPPING VALVE W/ THRUST BLOCK
- 24 10" WATER - PVC (PUBLIC)
- 25 2" x 4" REDUCER W/ THRUST BLOCKS
- 26 10" x 4" TEE W/ THRUST BLOCKS
- 27 4" WATER-PVC (FIRE)
- 28 8" WATER-PVC (PUBLIC)
- 29 8" MJ TAPPING SLEEVE W/8" TAPPING VALVE W/THRUST BLOCKS
- 30 TRENCH PER CC STD. DWG. NO. 504 EXACT LIMITS TO BE DETERMINED BY GLV INSPECTOR.
- 31 FOC LOCATION
- 32 ABANDON VALVE - CUT AND CAP PER NOTE ON C7
- 33 6"x6" M.J. TAPPING TEE W/6" TAPPING VALVE
- 34 10"x10"x10" TEE W/ THRUST BLOCKS
- 35 8"x6" TEE
- 36 4"x2" REDUCER
- 37 4"x3" REDUCER
- 38 4"x2 1/2" REDUCER
- 39 16" WATER - PVC PUBLIC
- 40 16" 90° BEND W/THRUST BLOCKS
- 41 16"x16"x16" TEE W/THRUST BLOCKS
- 42 16"x6"x16" TEE W/THRUST BLOCKS
- 43 8" 90° BEND W/THRUST BLOCKS
- 44 8" DCDA - UDACS PLATE NO. 20A
- 45 8" WATER - PVC (FIRE)
- 46 FIRE HYDRANT - UDACS PLATE NO. 7 - INSTALL PER LOCATION SHOWN

**CONSTRUCTION NOTES-SANITARY SEWER**

- 1 8" PVC SANITARY SEWER
- 2 STD. 5" DIA. MANHOLE
- 3 4" SANITARY SEWER SERVICE
- 4 SANITARY SEWER CLEANOUT

**CONSTRUCTION NOTES-SANITARY SEWER**

- 1 INSTALL R8-31- "NO PARKING FIRE LANE" SIGN

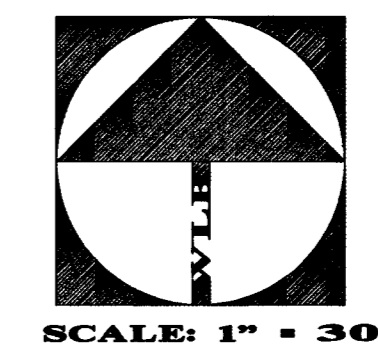
**INSTALLATION OF DOUBLE CHECK DETECTOR ASSEMBLY - 2-8"**

THE DOUBLE CHECK DETECTOR ASSEMBLIES SHALL BE INSTALLED IN ACCORDANCE WITH THE UDACS PLATE 20B ANY BLOCK WALL OR OTHER FENCE MATERIAL SHALL BE DESIGNED AND CONSTRUCTED AROUND THE OUTSIDE OF THE EASEMENT(S), SO AS TO ALLOW THE DISTRICT DIRECT ACCESS FROM THE ADJACENT RIGHT-OF-WAY

**BENCHMARK**  
 BENCH# 2LV01 28NEE6  
 A RIVET AND PLATE IN TOP OF CURB ON THE NORTHWEST RETURN OF H STREET AND MONROE AVENUE.  
 ELEVATION: 2033.62 FEET (NAVD 88) 619.8484M

**BASIS OF BEARINGS**

BEING THE NORTH LINE OF THE NORTHEAST QUARTER OF SECTION 28, TOWNSHIP 20 SOUTH, RANGE 61 EAST, M.D.M., CITY OF LAS VEGAS, CLARK COUNTY, NEVADA, AS SHOWN ON PARCEL MAP IN FILE 87, PAGE 93, OFFICIAL RECORDS, CLARK COUNTY, NEVADA, WHICH BEARS: NORTH 89°55'28" EAST.



GRAPHIC SCALE  
 1 inch = 30' ft.

**LEGEND**

	PROPOSED	EXISTING
PROPERTY BOUNDARY	---	---
RIGHT-OF-WAY	---	---
LOT LINE	---	---
CENTERLINE	---	---
CURB & GUTTER	---	---
PAD ELEVATION	65.2	65.2
BLOCK WALL	---	---
WATER LINE	---	---
WATER VALVE	---	---
WATER METER	---	---
PIV	---	---
FIRE HYDRANT	---	---
RPPA	---	---
DCDA	---	---
CENTERLINE	---	---
SANITARY SEWER MANHOLE	---	---
SANITARY SEWER CLEANOUT	---	---
SANITARY SEWER FLOW ARROW	---	---
GAS LINE	---	---
GAS VALVE	---	---
GAS METER	---	---
GAS MANHOLE	---	---
TRAFFIC CONDUIT	---	---
PULL BOX	---	---
TRENCH, BACKFILL AND REPLACE PAVING PER C.C. STD. DWG. NO. 503	---	N/A
BUILDING TO HAVE SPRINKLER SYSTEM. SEE ARCHITECTURALS FOR ROOM LOCATION & DETAILS	---	N/A
FIRELANE ("FIRE LANE, NO PARKING")	---	---

**ABANDONMENT OF EXISTING SERVICE(S)**  
 LARGER THAN 2"

THE CONTRACTOR SHALL NOTIFY THE INSPECTION DIVISION AT THE LVWD (702-258-3227) 48 HOURS PRIOR TO THE REQUESTED REMOVAL TIME TO ALLOW THE DISTRICT TO TAKE THE FINAL METER READING OF THE METER. AFTER THE FINAL READING, THE CONTRACTOR MAY THEN BEGIN REMOVAL PROCEDURES FOR THE AFFECTED SERVICE AS FOLLOWS:

**FIRE DEPARTMENT**

FIRE FLOW REQUIREMENT IS 250 GALLONS PER MINUTE AT 20 PSI RESIDUAL PRESSURE.  
 BASED ON:  
 SQUARE FOOTAGE: 41,756 SQUARE FEET  
 LARGEST AREA BETWEEN 4-HOUR AREA SEPARATION WALLS: N/A SQUARE FEET  
 BUILDING HEIGHT: 35 FEET  
 NUMBER OF STORIES: 2 FLOORS  
 TYPE OF CONSTRUCTION: V-M  
 OCCUPANCY: R-3

REVIEWED BY: [Signature] DATE: 9.13.02  
 FULL AUTOMATIC FIRE SPRINKLER SYSTEM: BLDGS D1, D2, E1, E2, F1, and CLUB HOUSE  
 APPROVAL OF THESE PLANS SHALL NOT BE CONSIDERED A PERMIT FOR NOR AN APPROVAL OF ANY VIOLATION OF ANY OF THE PROVISIONS OF THE STATE OR COUNTY LAWS.

SEWER CONTRIBUTION RATE			
NUMBER OF UNITS=	100		
AVG. DAILY FLOW PER UNIT=	175 (GPD)	0002 (MGD)	
TOT. AVG. DAILY UNIT FLOW=	17,500 (GPD)	0175 (MGD)	
PEAK FACTOR = 3.4	X 3.4	X 3.4	
TOT. PEAK DAILY UNIT FLOW=	59,500 (GPD)	0595 (MGD)	
NUMBER OF OTHER=	1		
AVG. DAILY FLOW PER OTHER=	112.5 (GPD)	0001 (MGD)	
TOT. AVG. DAILY OTHER FLOW=	112.5 (GPD)	0001 (MGD)	
PEAK FACTOR = 3.4	X 3.4	X 3.4	
TOT. PEAK DAILY OTHER FLOW=	382.5 (GPD)	0004 (MGD)	
TOT. PEAK DAILY FLOW=	59,882.5 (GPD)	0599 (MGD)	

**NOTE**

ALL WATER FACILITIES CONSTRUCTION SHALL BE IN ACCORDANCE WITH THE "UNIFORM DESIGN AND CONSTRUCTION STANDARDS FOR WATER DISTRIBUTION SYSTEMS"(UDACS), LATEST EDITION.

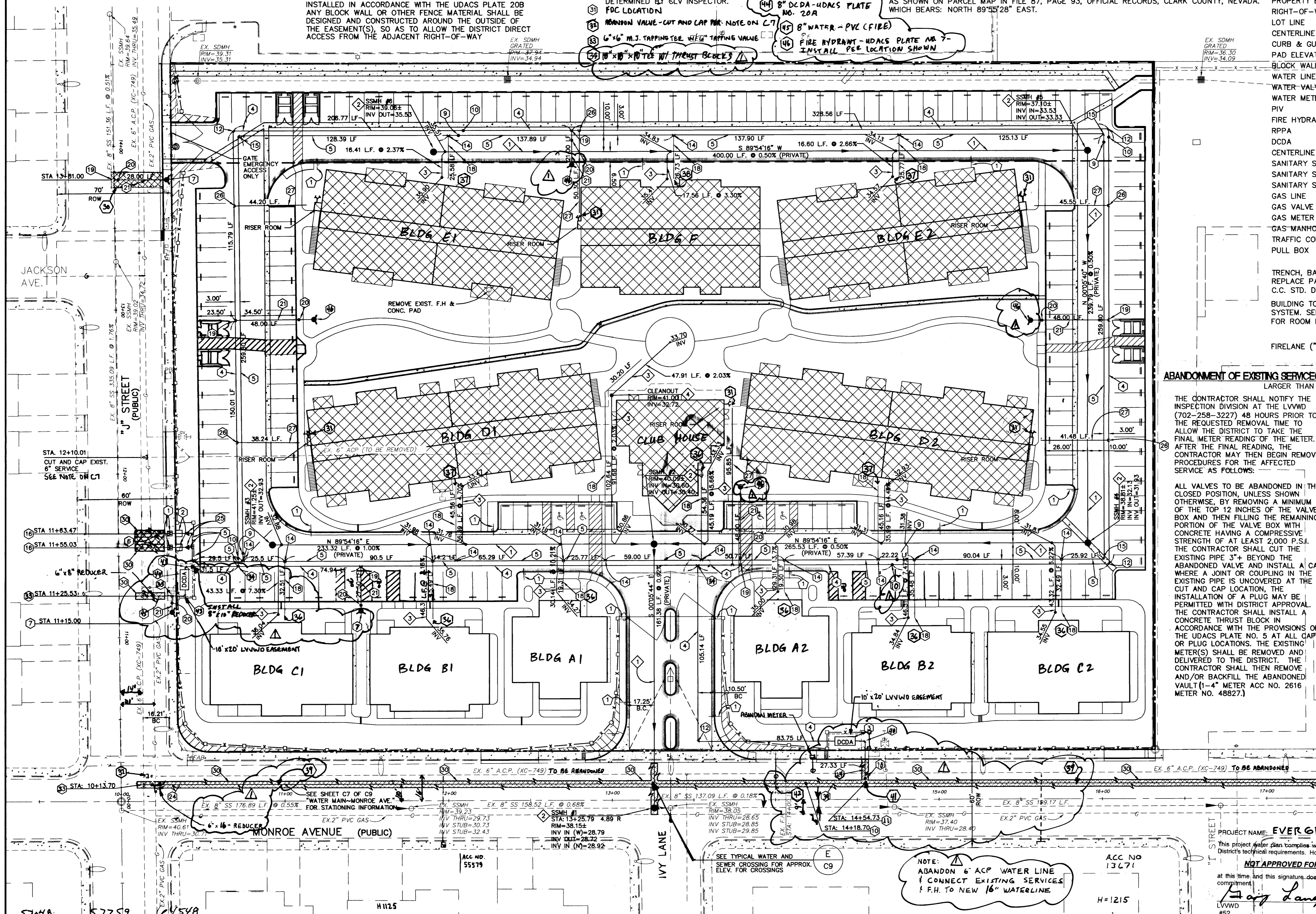
**APPROVED FOR CONSTRUCTION**

Las Vegas Valley Water District Date: 09/13/02

PROJECT NAME: EVERGREEN APT.  
 This project complies with the Las Vegas Valley Water District's technical requirements. However, this water plan is NOT APPROVED FOR CONSTRUCTION at this time and this signature does not provide or imply a water commitment.  
 DATE: 09/13/02  
 [Signature]

SAFETY ALERT  
 Call before you Dig.  
 1-800-227-2600  
 UNDERGROUND SERVICE ALERT

SAFETY ALERT  
 Call before you Overhead  
 593-6111  
 OVERHEAD SERVICE ALERT



REVISION: 1  
 REV. DATE: 09/13/02  
 BY: JLF  
 DESCRIPTION: FIRE FLOW REVISION

COMMUNITY DEV. PROGRAMS CENTER  
 2008 ALTA DRIVE  
 LAS VEGAS, NEVADA 89102  
 702-875-8880

MASTER UTILITY PLAN

EVERGREEN APARTMENTS

DESIGNED BY: JLF  
 CHECKED BY: JLF  
 PROJECT NO.: 400028-A001

DATE: 01/22/01  
 DATE: 01/22/01  
 DATE: 01/23/01

SCALE: 1"=30'

DRAWING NO. 07V3761

SEAL: [Professional Engineer Seal for K. NELSON STONE II]