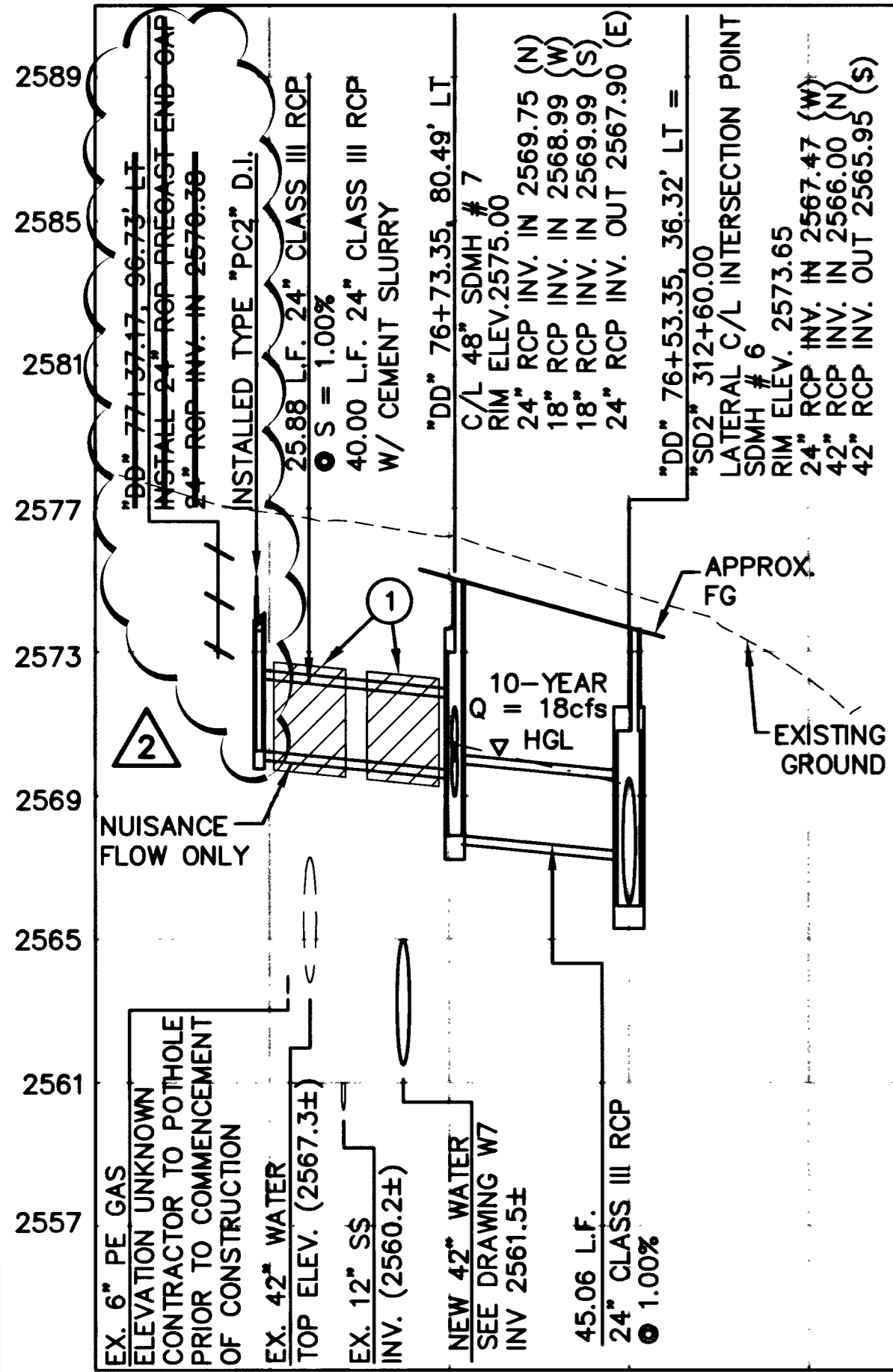
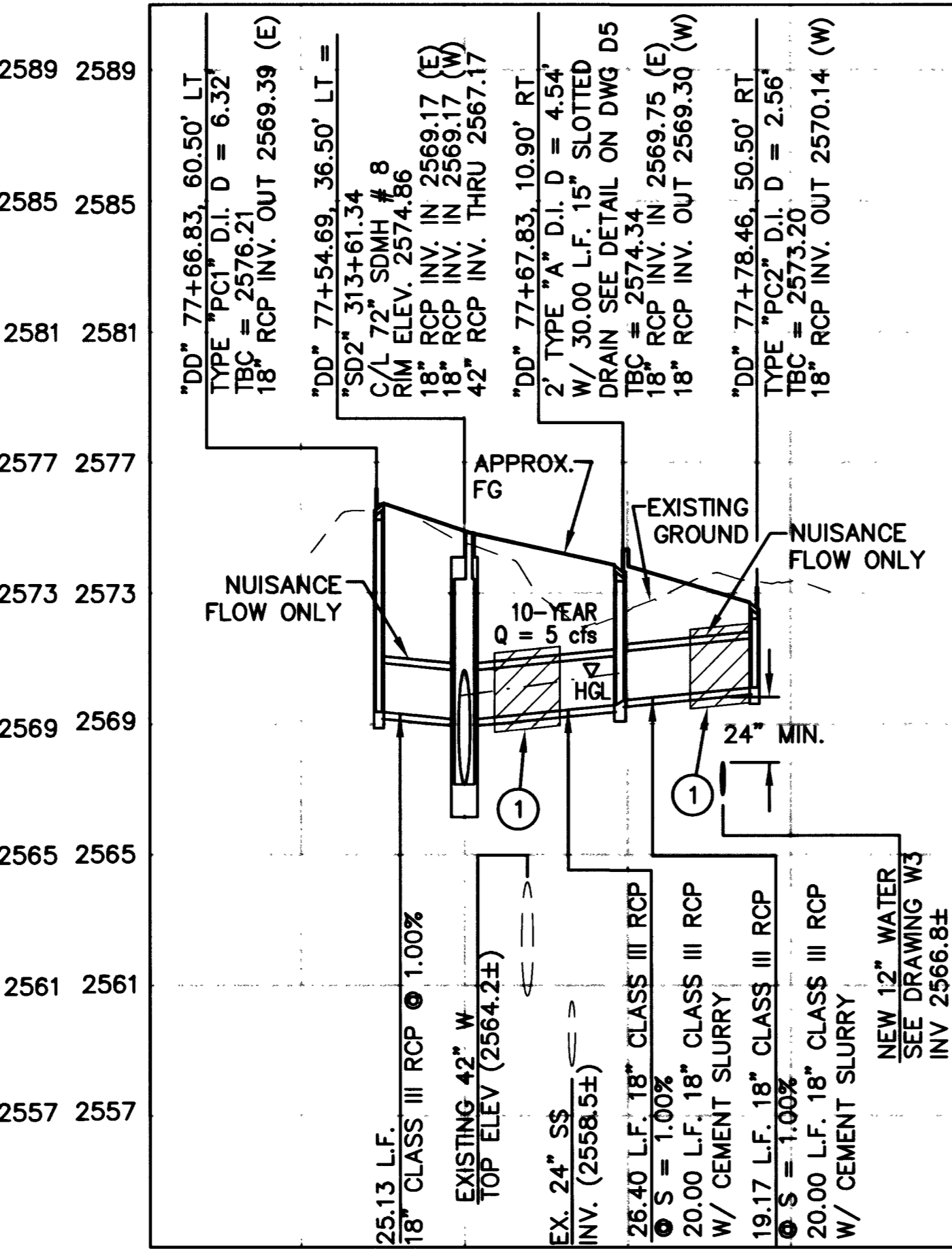


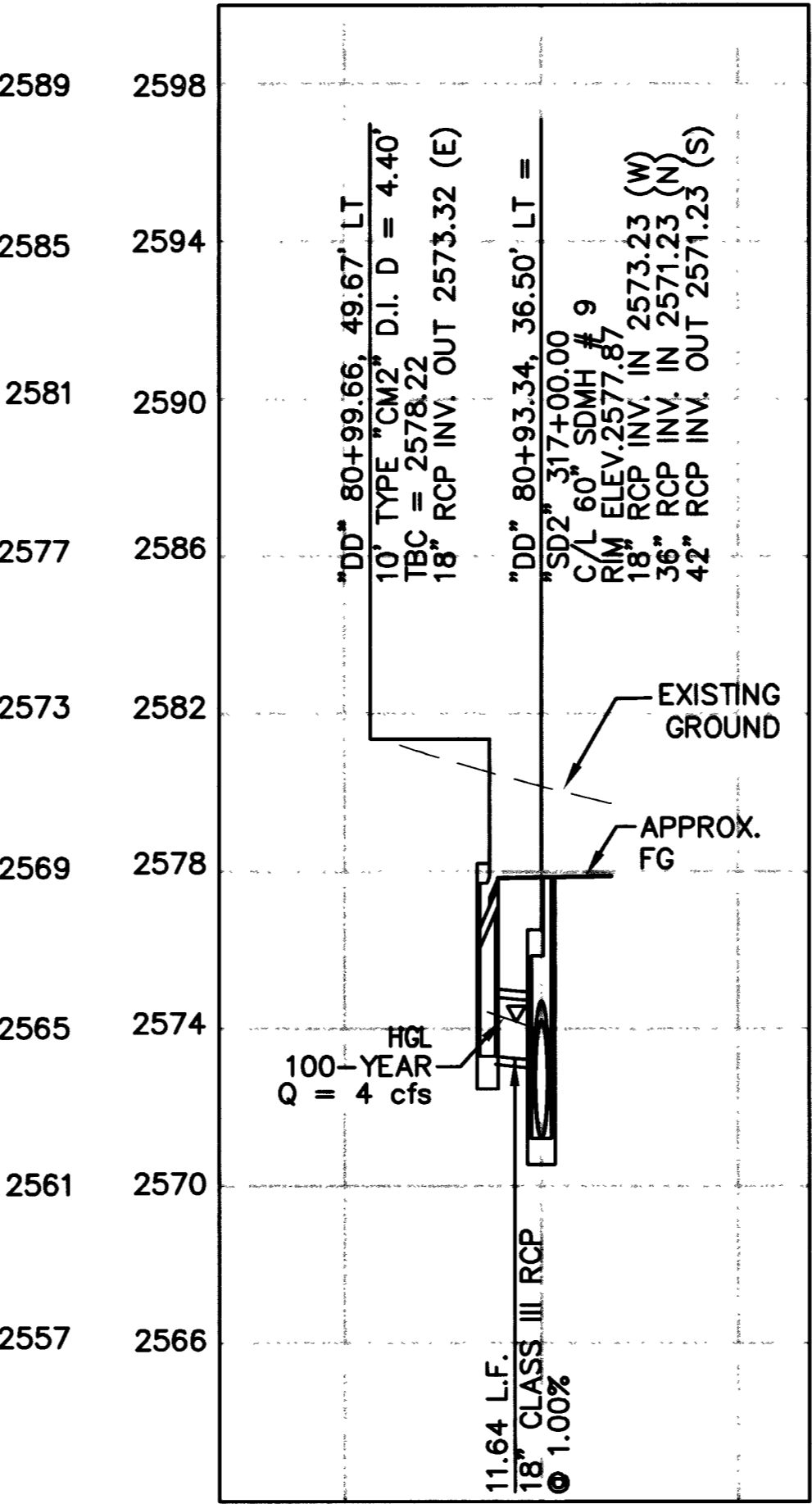
I:\5678\CAD\5678\RECORDINGS\5678-SOL.DWG



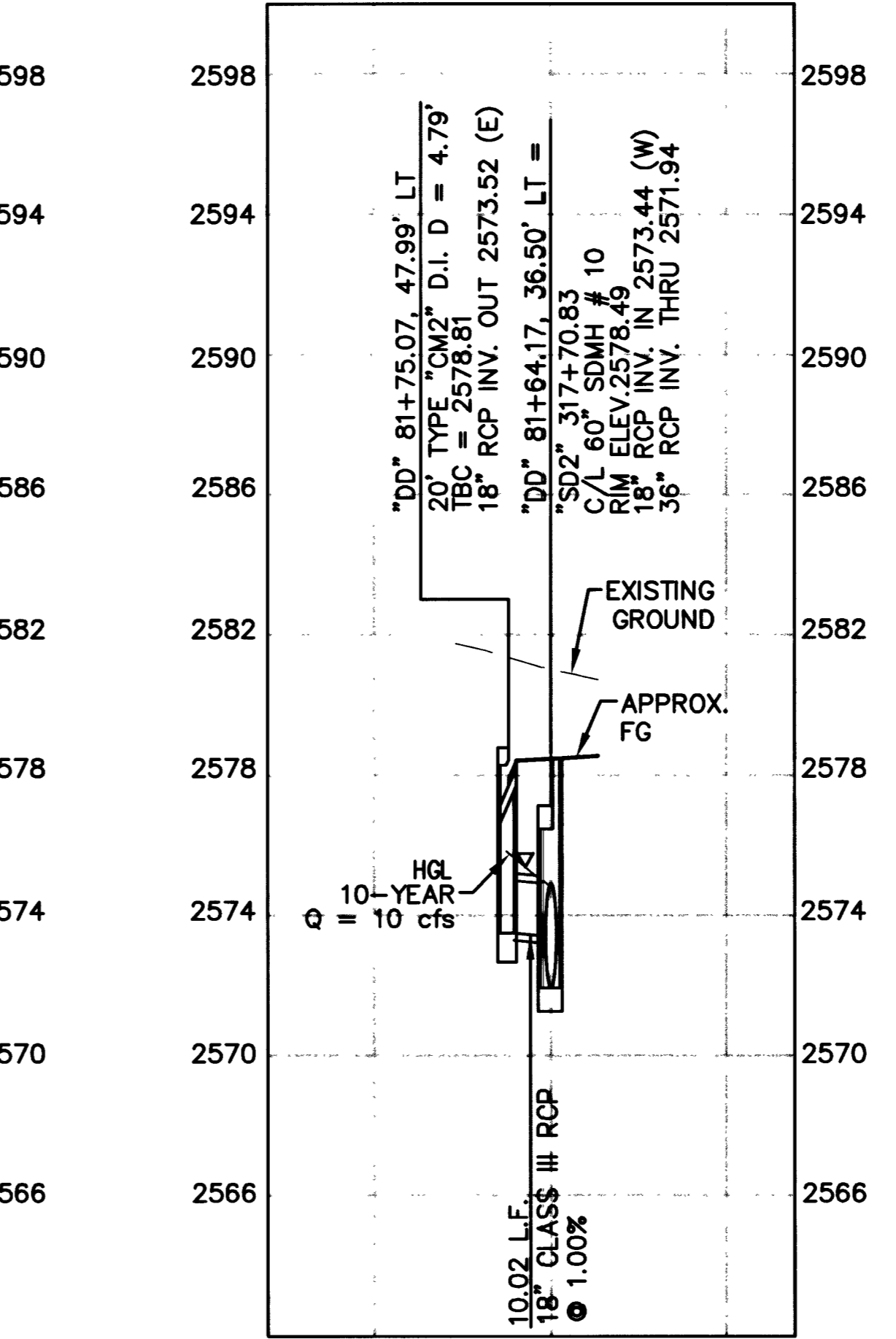
8 "DD" 76+53.35, 36.32' LT



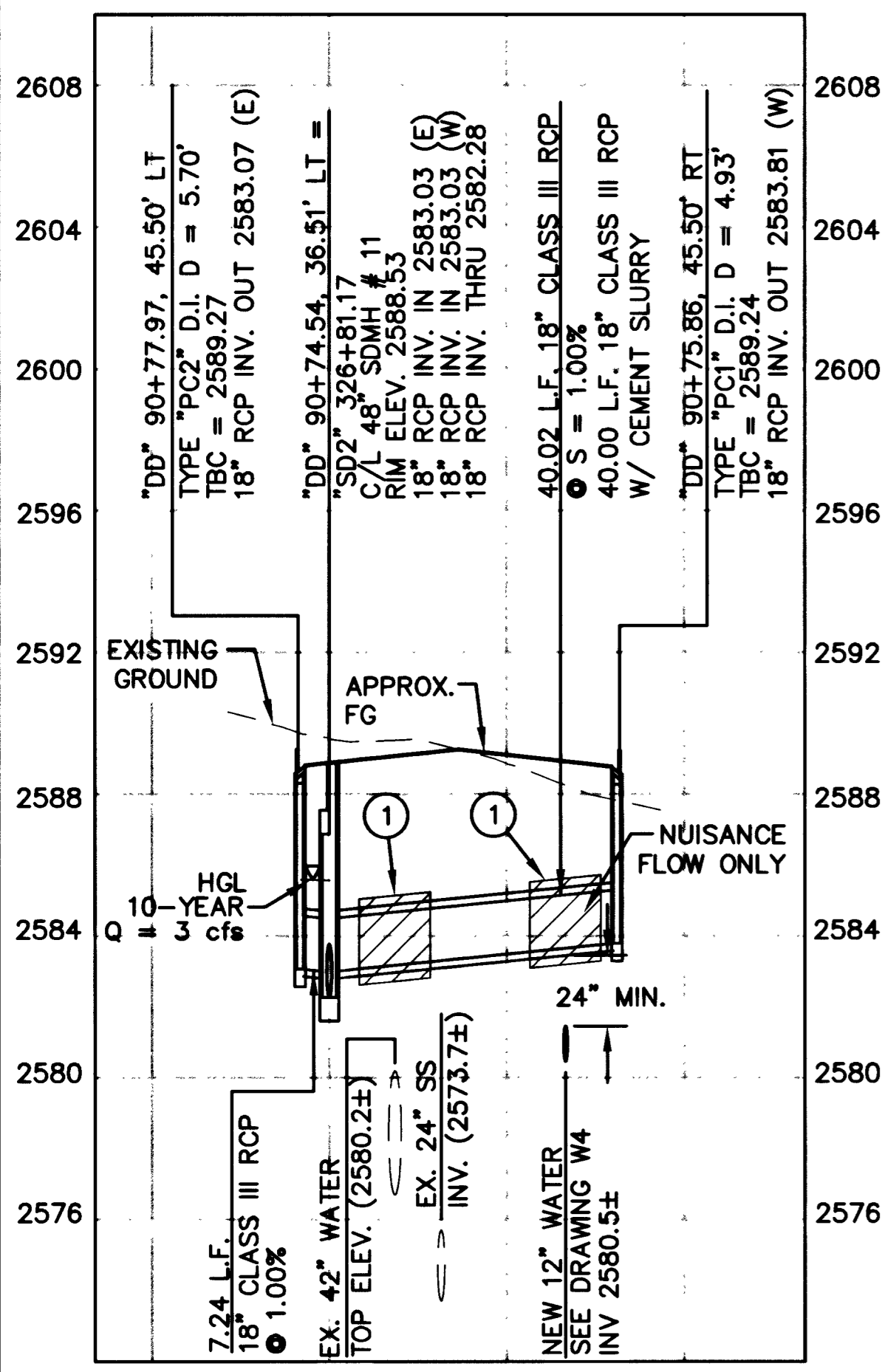
9 "DD" 77+54.69, 36.50' LT



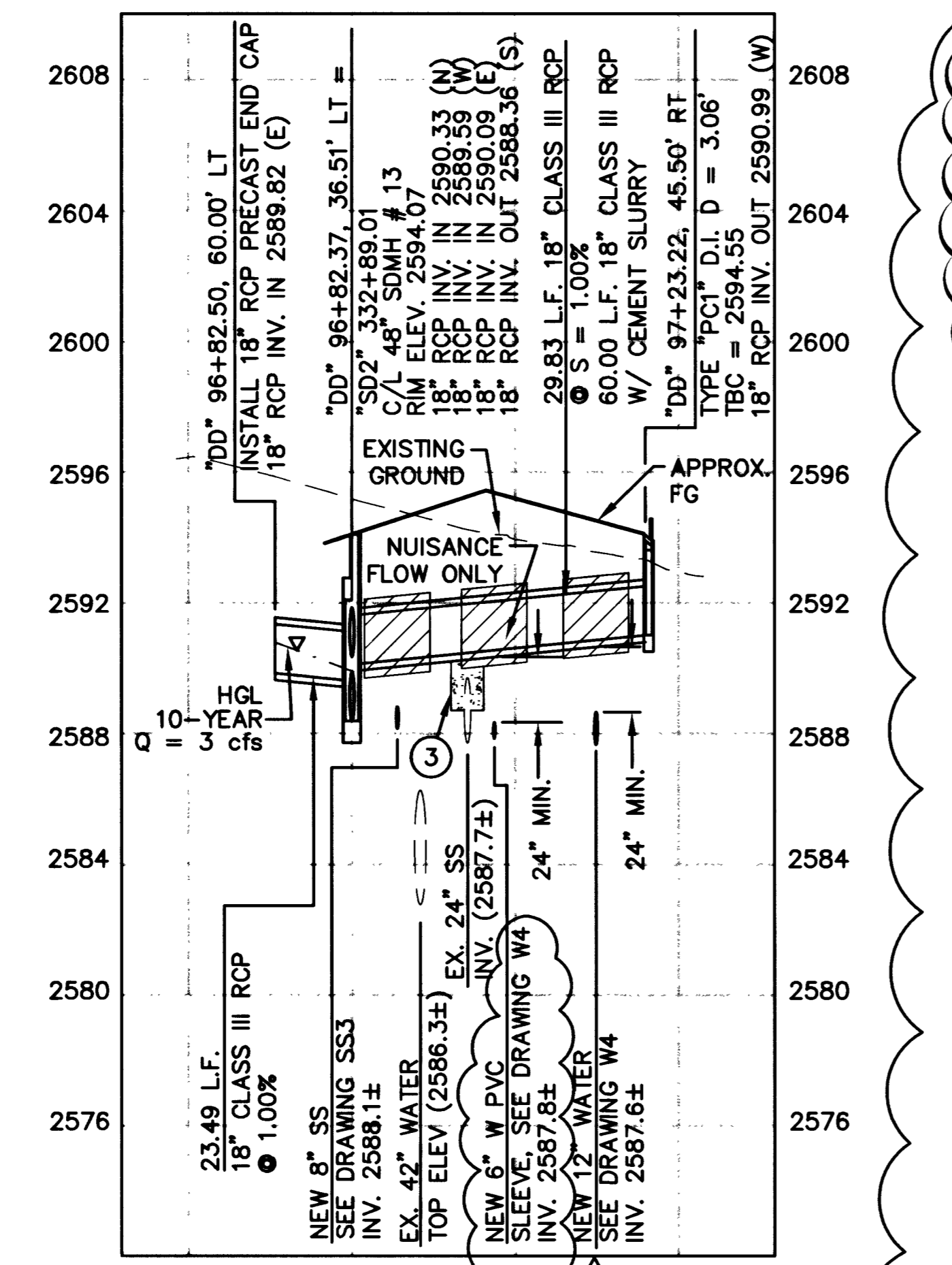
10 "DD" 80+93.34, 36.50' LT



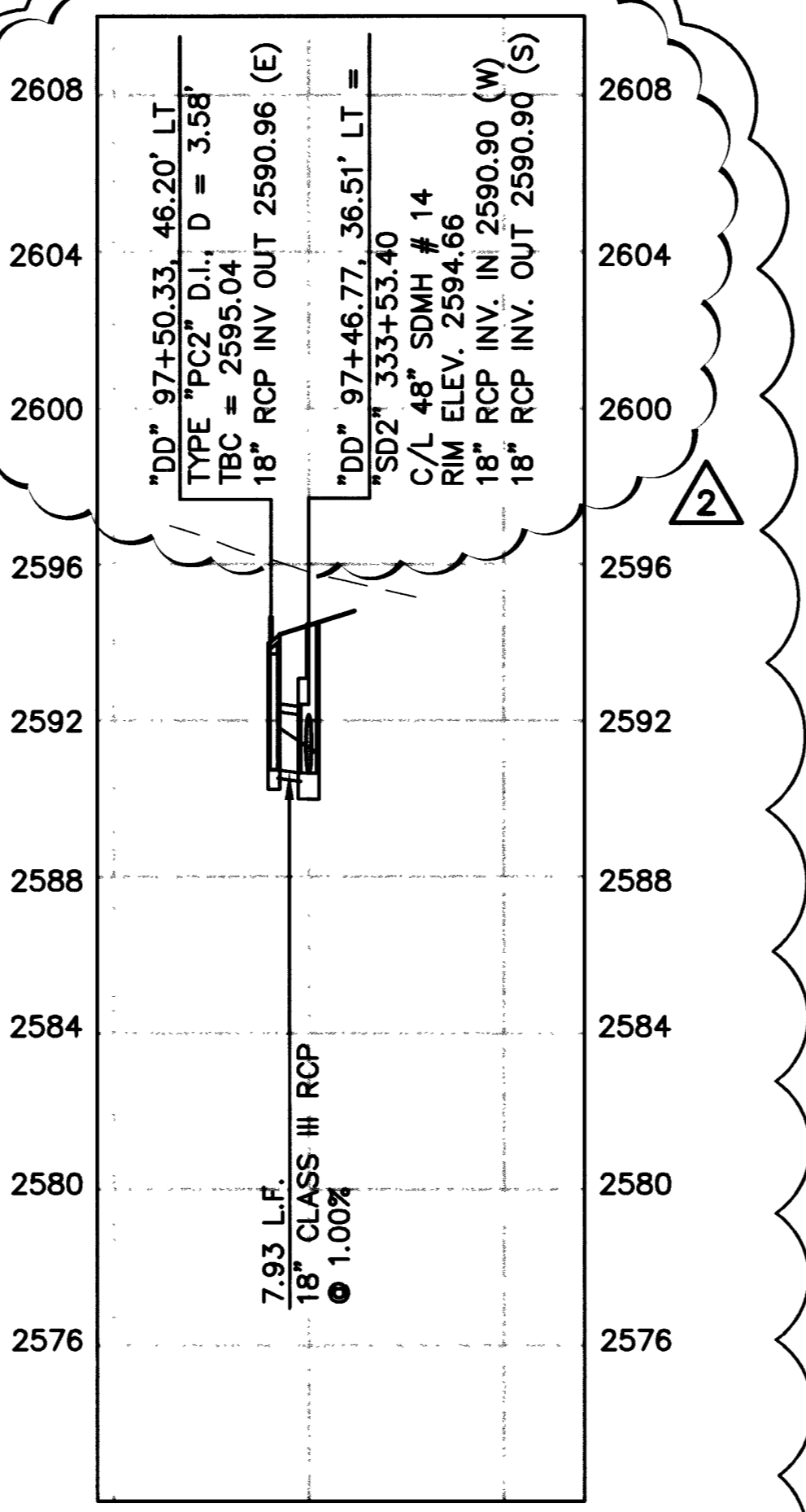
11 "DD" 81+64.17, 36.50' LT



12 "DD" 90+74.54, 36.51' LT



13 "DD" 96+82.37, 36.51' LT



14 "DD" 97+19.61, 36.51' LT

- NOTES**
- SEE DRAWING I2 FOR GENERAL NOTES.
 - SEE DRAWING D1 FOR STORM DRAIN MANHOLE AND DROP INLET SCHEDULE.
 - CONTRACTOR SHALL VERIFY ALL HORIZONTAL AND VERTICAL LOCATIONS OF EXISTING UTILITIES PRIOR TO COMMENCEMENT OF CONSTRUCTION.
- CONSTRUCTION NOTES:**
- CEMENT SLURRY ENCASE RCP, 10' (FOOT) MIN EACH SIDE OF WATER LINE, 4" MIN THICKNESS. SEE NOTE NO. 8 ON DWG. W9.
 - CONSTRUCT SANITARY SEWER PROTECTION PER CCSD STD. DWG SD-20

APPROVED

LAS VEGAS VALLEY WATER DISTRICT DATE

Avoid cutting underground utility lines. It's costly.
2 working days

Call before you Dig

1-800-227-2600
Underground Service Alert (U.S.A.)

Avoid overhead power line contact.
2 working days

Call before you Overhead

1-702-593-6111
Nevada Power Environment and Safety Services Department

DEPARTMENT OF PUBLIC WORKS
CITY OF LAS VEGAS

RECORD DRAWING INFORMATION PROVIDED BY MEADOW VALLEY CONSTRUCTION, INC.
REVISED LATERAL #14, MODIFIED NOTE LATERAL #13

REV	DATE	BY	REVISION
1	12/15/03	DRF	
2	04/22/03	LWJ	

CONSULTING ENGINEERS • PLANNERS • LAND SURVEYORS
2727 SOUTH RAINBOW BOULEVARD
LAS VEGAS, NEVADA 89146-5148 PHONE (702) 873-7550 FAX (702) 362-2597

vtn nevada

TITLE
STORM DRAIN LATERAL PROFILES

PROJECT
DURANGO DIRVE IMPROVEMNTS
I-215 TO US95

SEAL
ORIGINAL CONSTRUCTION DRAWINGS ARE ON FILE WITH THE CITY OF LAS VEGAS.
THE DOCUMENTS WERE SEALED ON 6/1/03
BY
KEN D. GILBRETH
UNDER LICENSE NO. 9177

WO. NO. 5678
DESIGNED BY JPL
DRAWN BY BAH, TMM
DATE 11/27/02
SCALE HORIZ. 1" = 40'
VERT. 1" = 4'
DRAWING SHEET 55 OF 80 SHEETS

RECORD DRAWINGS INFORMATION SUPPLIED BY CONTRACTOR - DECEMBER 2003