

LEGEND

- NEW A.C. PAVEMENT (SEE TYPICAL X-SECTIONS)
- EXISTING A.C. PAVEMENT TO BE REMOVED
- NEW TEMPORARY A.C. (SEE TYPICAL X-SECTIONS)
- NEW CONCRETE MEDIAN
- NEW TYPE II AGGREGATE
- NEW LANDSCAPE ROCK MEDIAN ISLAND

CONSTRUCTION NOTES

- ② SAWCUT & MATCH
- ③ REMOVE
- ⑩ FOR WATERLINE SEE DWGS W1 THRU W7
- ⑮ ADJUST ACCESS MH & LADDER PER LVVWD'S SPECIFICATIONS
- ⑰ EDGE OF NEW A.C. PAVEMENT

APPROVED

LAS VEGAS VALLEY WATER DISTRICT DATE

TITLE ROADWAY PLAN AND PROFILE
STA. 5+00.00 TO STA. 15+00.00
DEER SPRINGS

PROJECT DURANGO DRIVE IMPROVEMENTS
I-215 TO US95

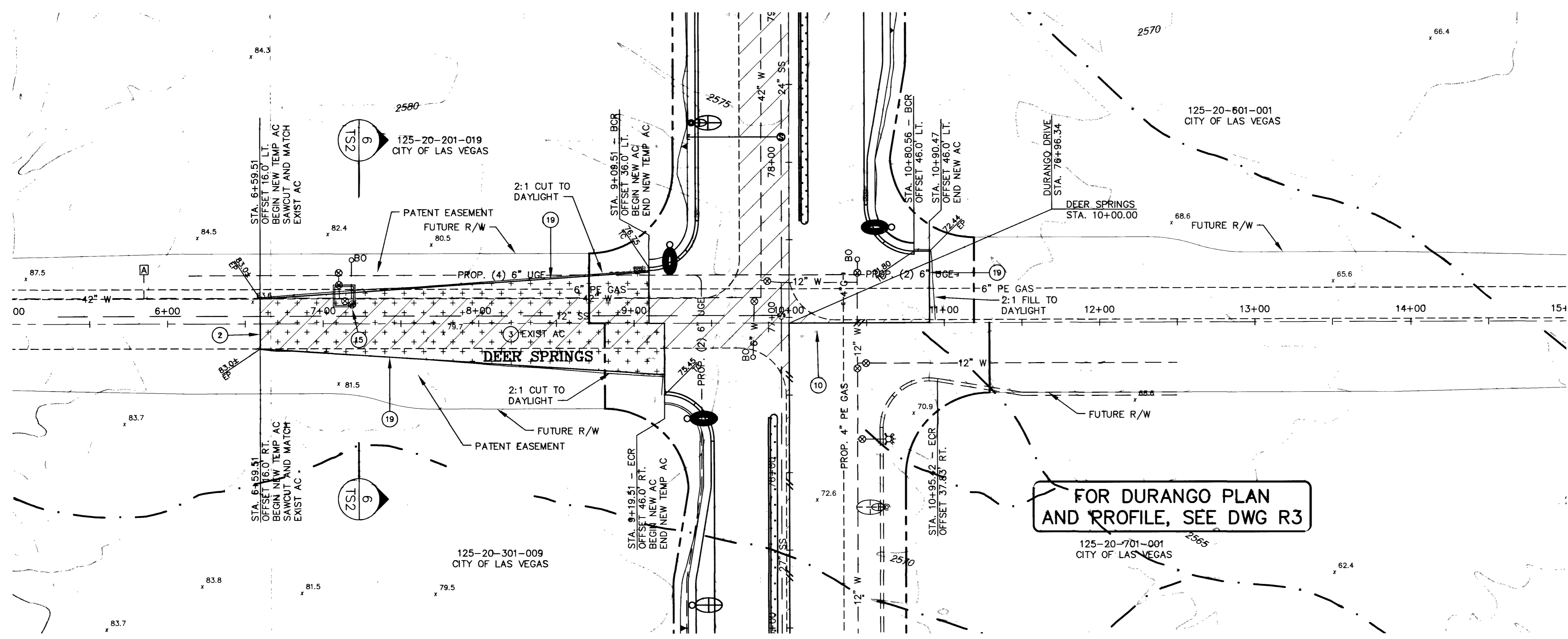
SEAL
ORIGINAL CONSTRUCTION DRAWINGS ARE ON FILE WITH THE CITY OF LAS VEGAS.
THE DOCUMENTS WERE SEALED ON 12/18/02
BY KEN D. GILBRETH UNDER LICENSE NO. 9177

NO. NO. 5878
LMW
BY
DATE 11/27/02
SCALE HORIZ. 1"=40'
VERT. NA
DRAWING R7 SHEET 32A OF 80 SHEETS

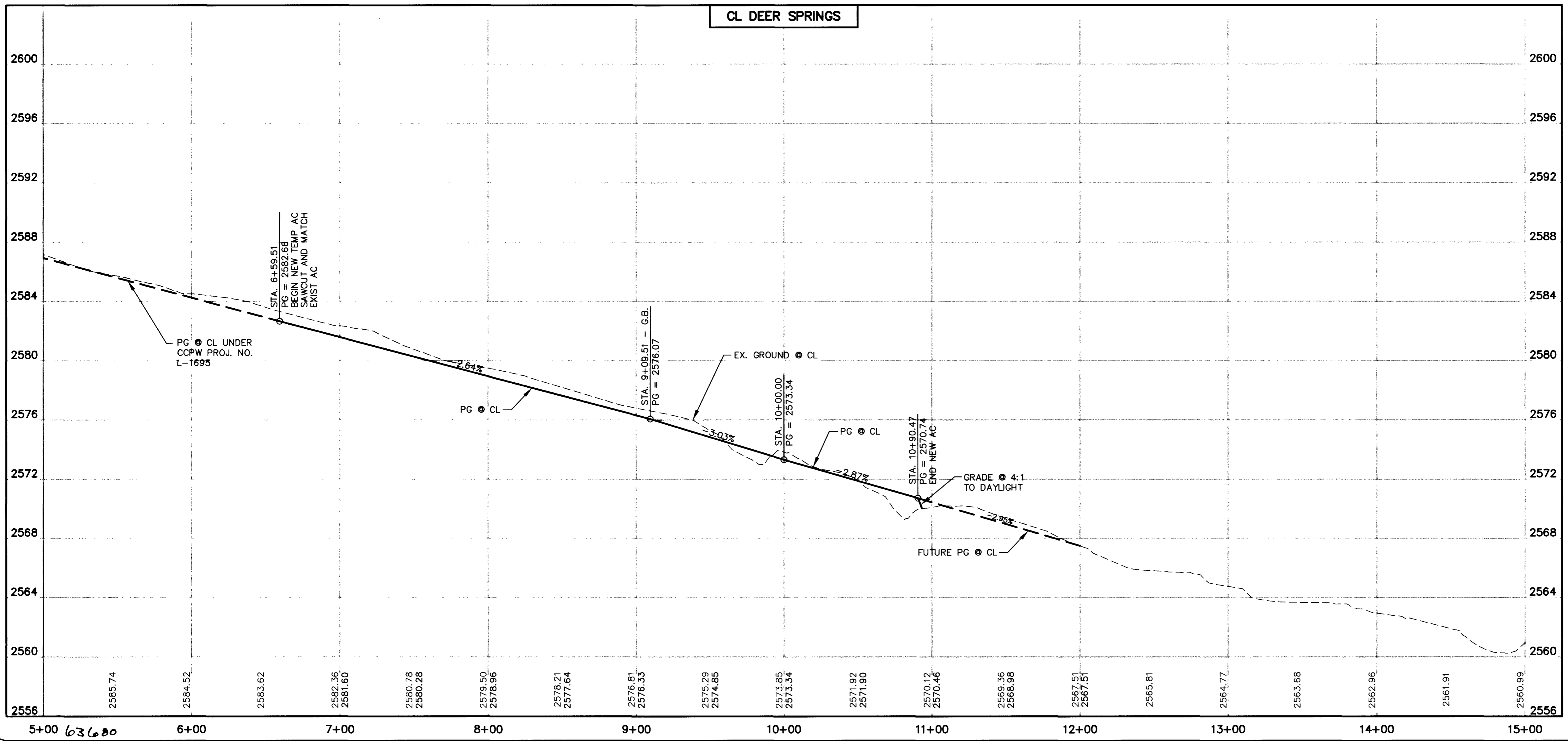
DEPARTMENT OF PUBLIC WORKS
CITY OF LAS VEGAS

CONSULTING ENGINEERS • PLANNERS • LAND SURVEYORS
2727 SOUTH RAINBOW BOULEVARD
LAS VEGAS, NEVADA 89146-5148 PHONE (702) 873-7550 FAX (702) 362-2597

RECORD DRAWINGS INFORMATION SUPPLIED BY CONTRACTOR - DECEMBER 2003



CL. DEER SPRINGS



PS "PLT", MS "SIDE-DEER"
I:\CADD\PUBLICWORKS\5878\RECORD\DWG\5878-d.dwg