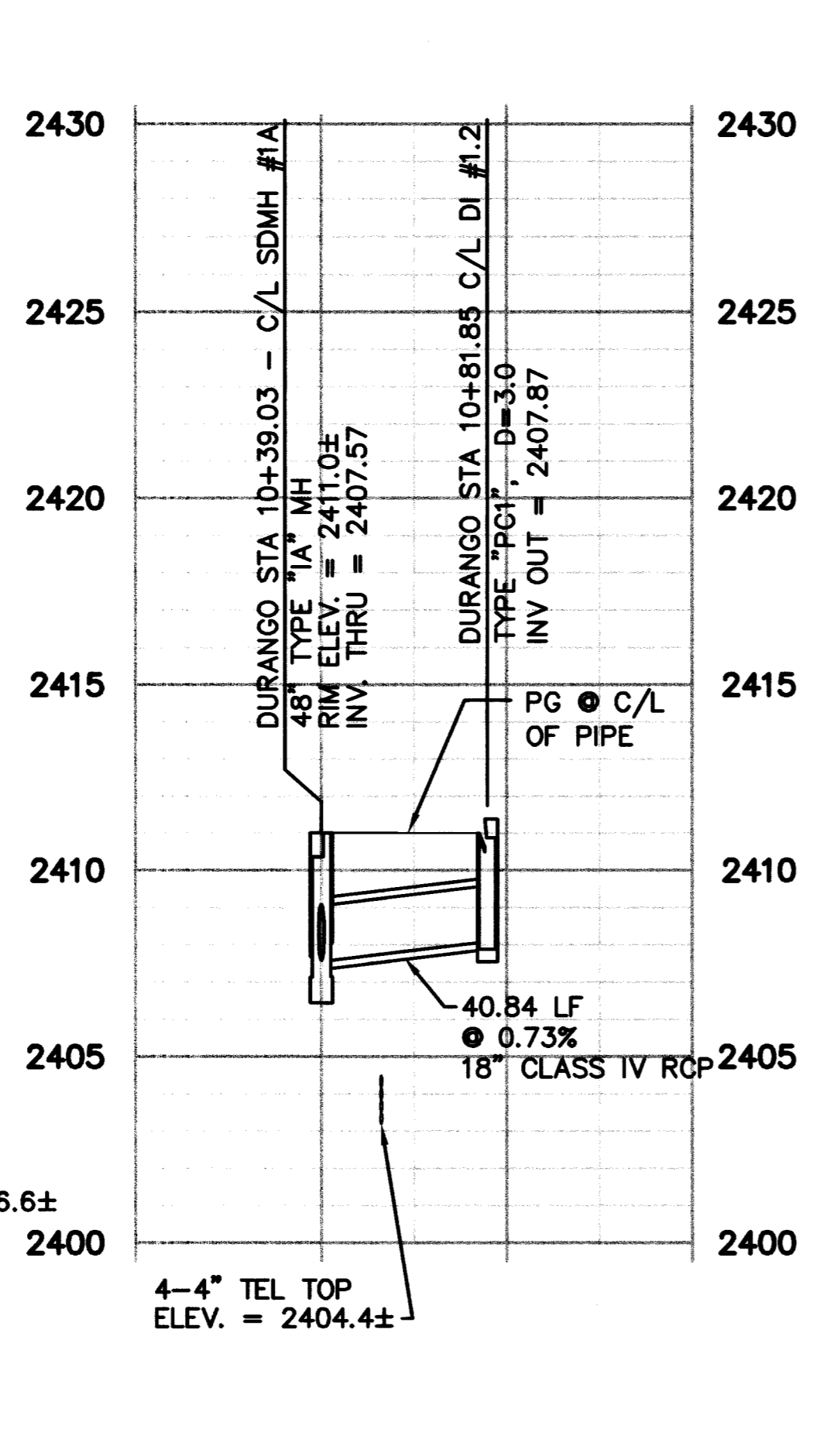
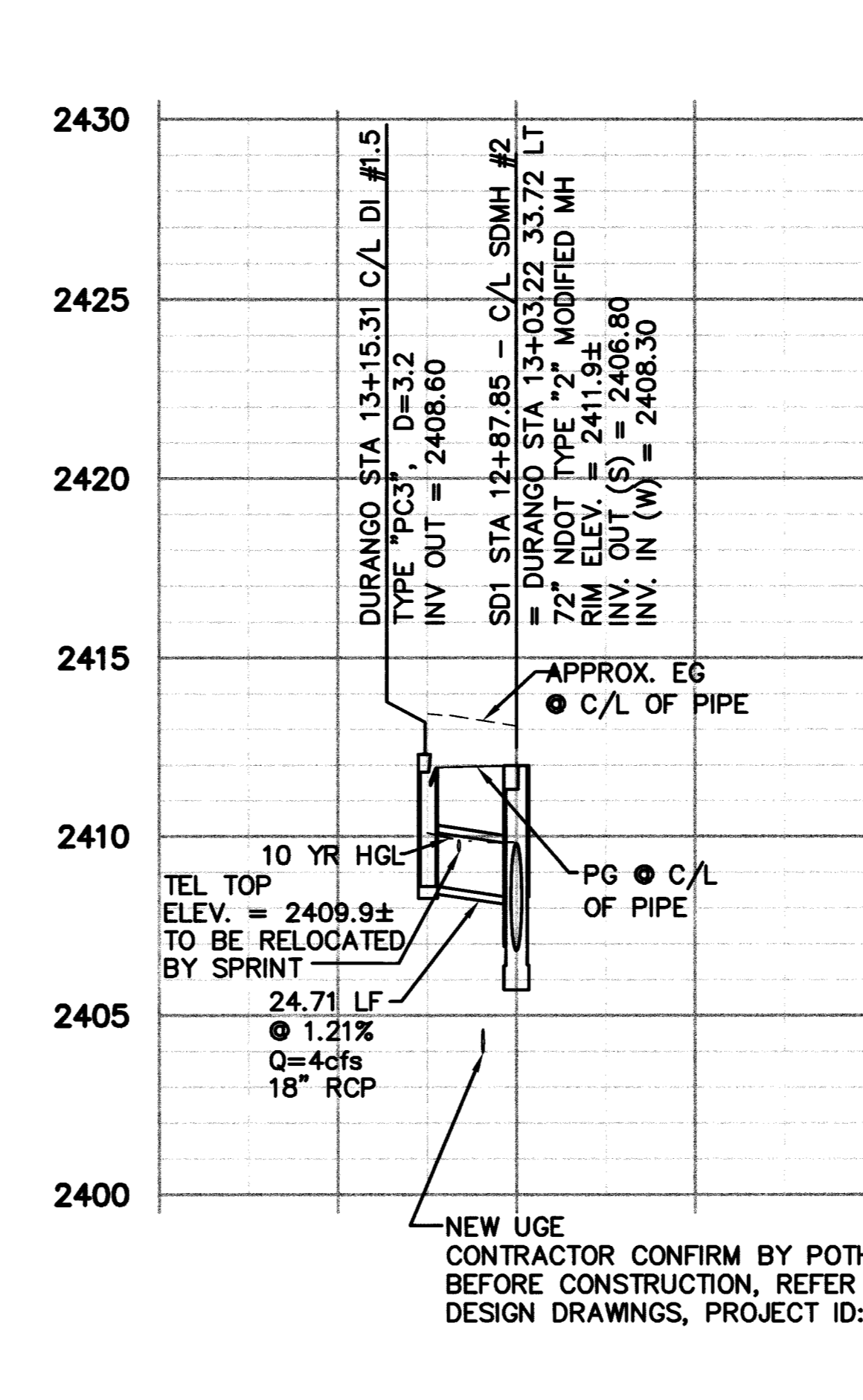


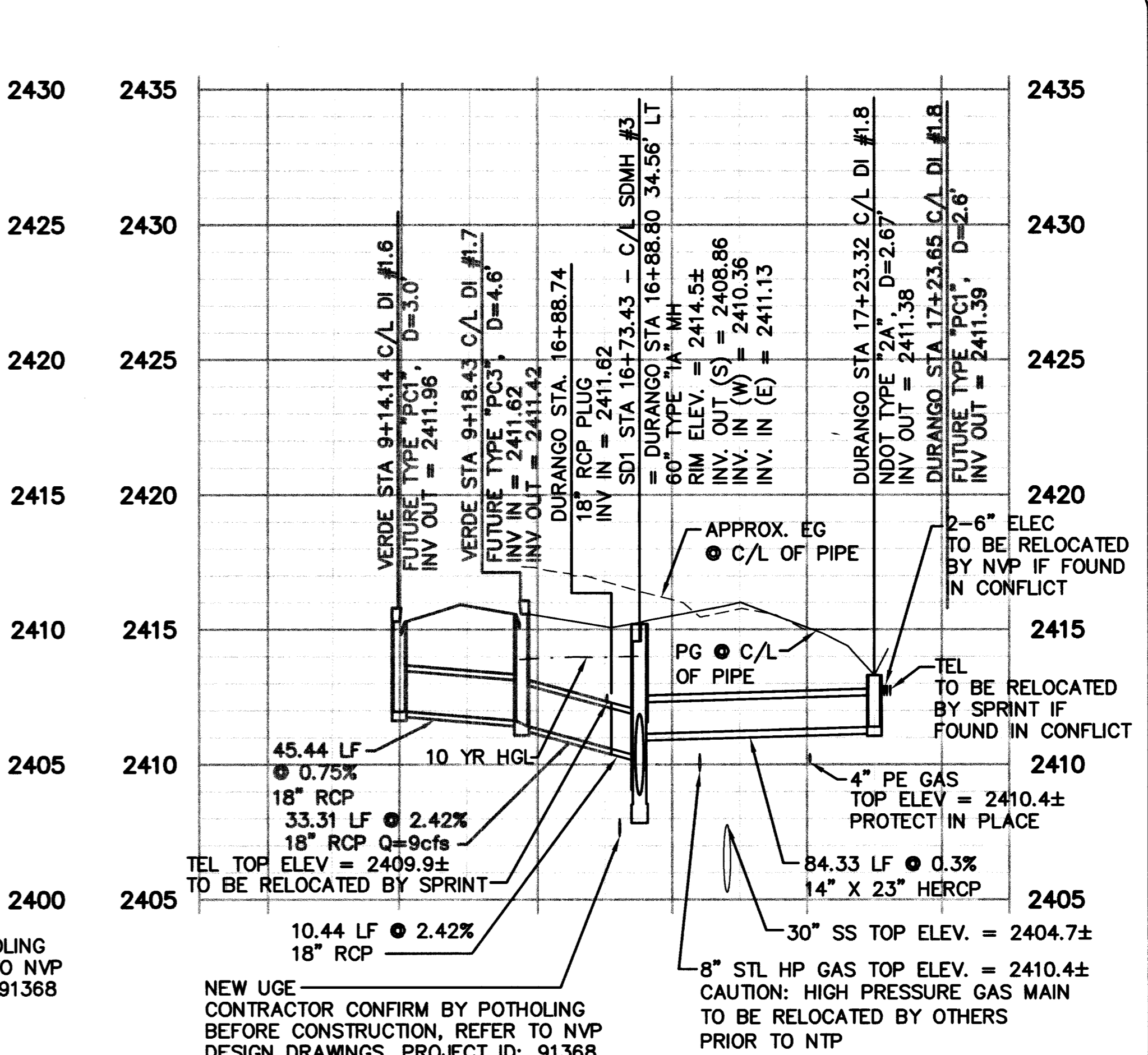
1 STA. 10+39.03



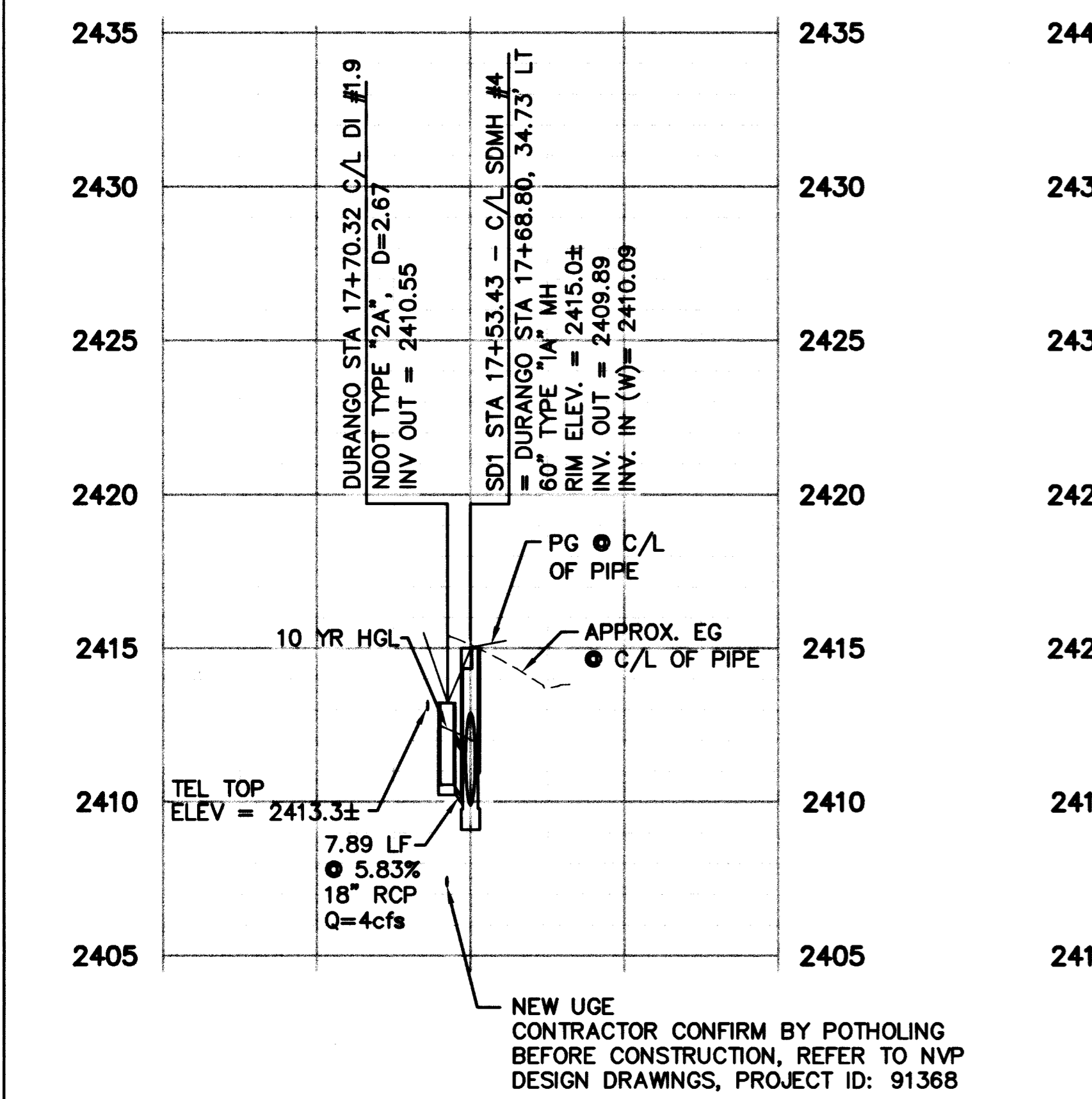
1A STA. 10+39.03



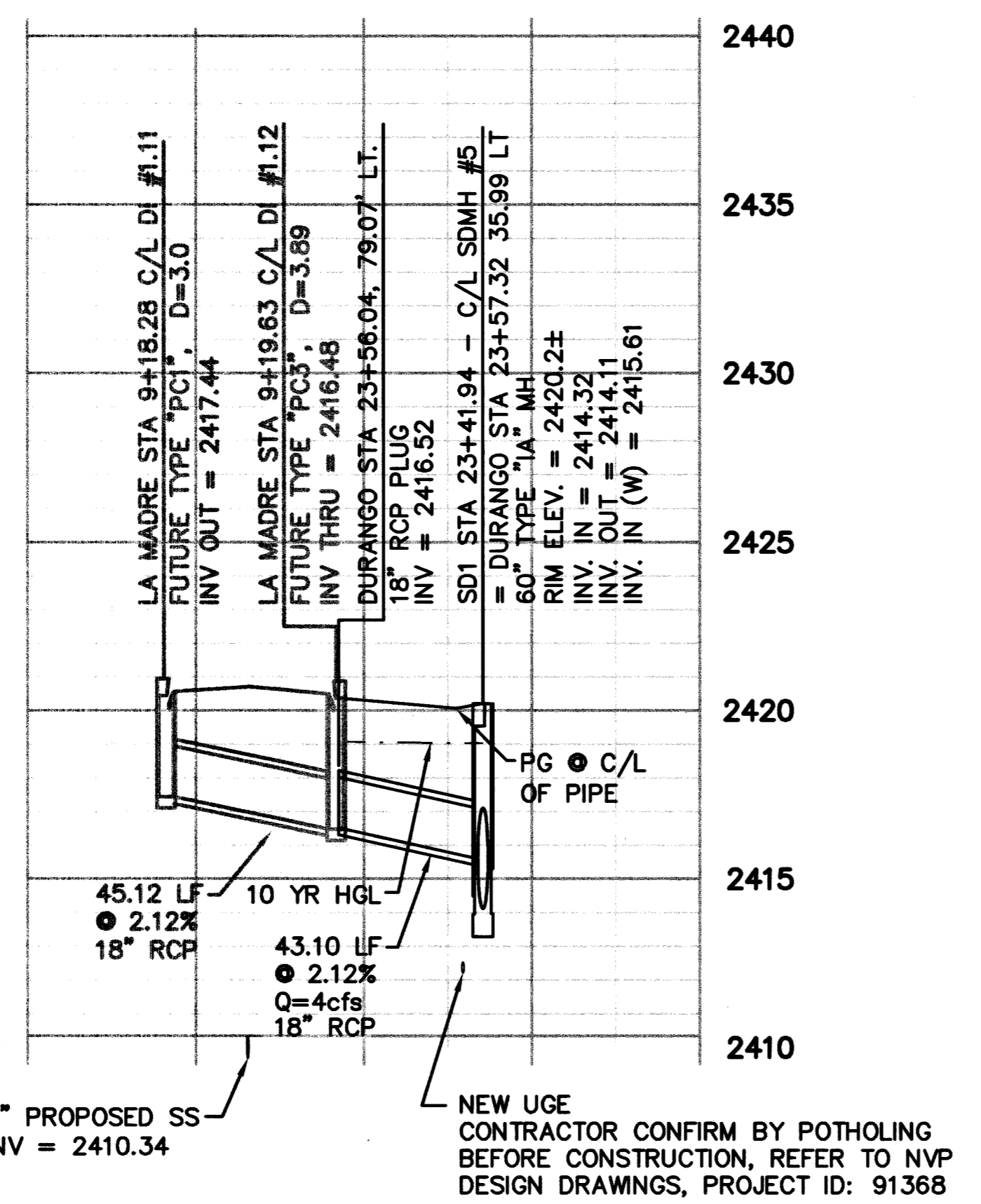
2 STA. 13+03.22



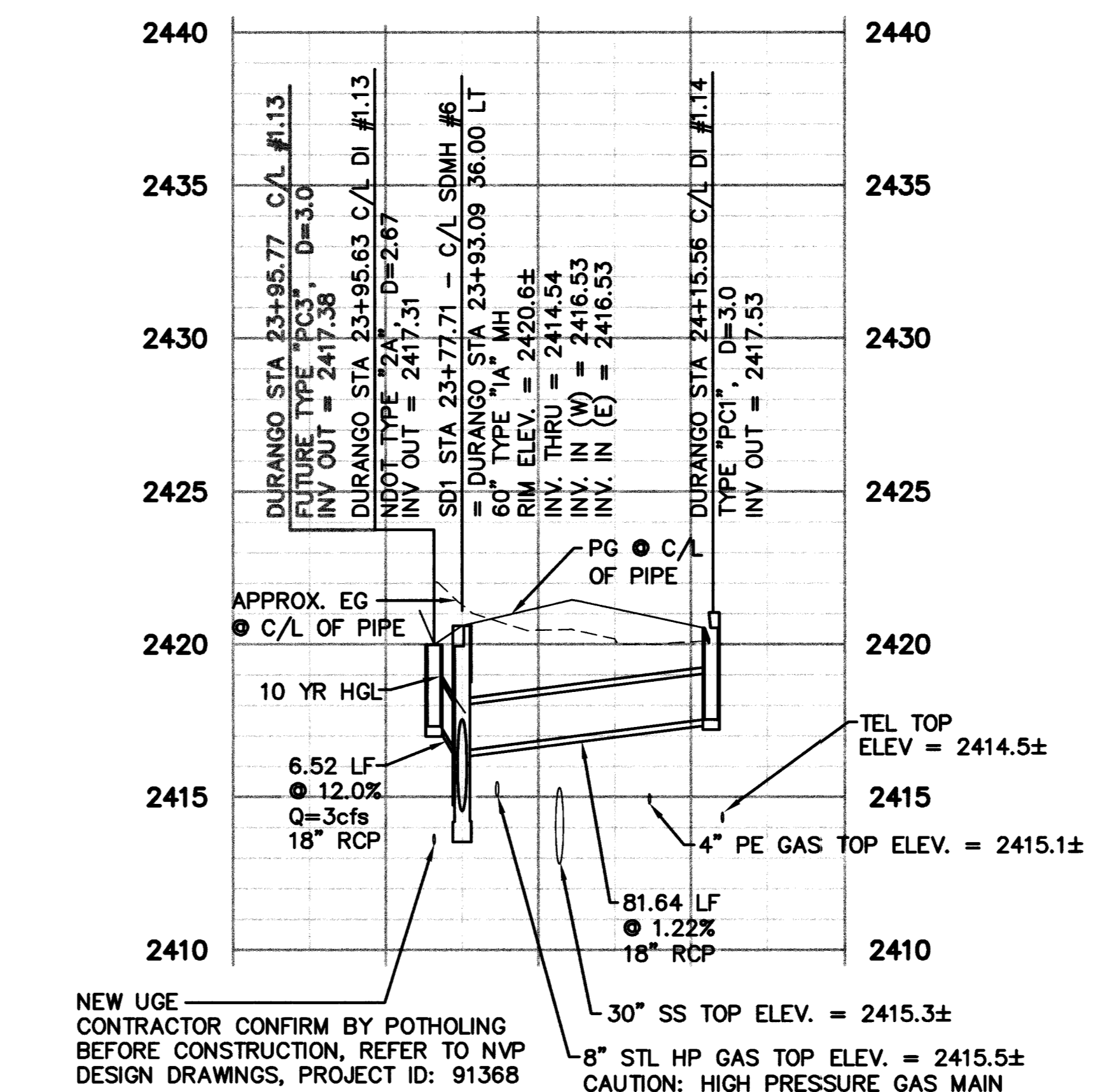
3 STA. 16+88.80



4 STA. 17+68.80



5 STA. 23+57.32



6 STA. 23+93.09

- NOTE:**
1. ALL RCP SHALL BE CLASS III UNLESS NOTED OTHERWISE.
  2. FOR 72" NDOT TYPE "2" MODIFIED MH, SEE NDOT STD. R-4.7.1.
  3. FOR NDOT TYPE "2A" DROP INLET, SEE NDOT STD. R-4.2.1.
  4. FOR RIPRAP APRON AT NDOT TYPE "2A" DROP INLET, SEE DETAIL ON DWG D15.

Avoid overhead power line contact.  
2 working days  
**Call before you Overhead**  
1-702-593-6111  
Nevada Power Environment and Safety Services Department

Avoid cutting underground utility lines. It's costly.  
2 working days  
**Call before you Dig**  
1-800-227-2600  
Underground Service Alert (U.S.A.)

DEPARTMENT OF PUBLIC WORKS  
CITY OF LAS VEGAS, NEVADA

RECORD DRAWING INFORMATION PROVIDED BY LV PAVING REVISION

REV	DATE	BY

CONSULTING ENGINEERS • PLANNERS • LAND SURVEYORS  
2727 SOUTH RAINBOW BOULEVARD  
LAS VEGAS, NEVADA 89102-5148 PHONE (702) 873-7550 FAX (702) 362-2597

**vtn** nevada

STORM DRAIN LATERAL PROFILES  
DURANGO DRIVE  
DURANGO DRIVE IMPROVEMENTS  
LONE MOUNTAIN ROAD TO TROPICAL PARKWAY

PROJECT INFORMATION SUPPLIED BY CONTRACTOR - APRIL 2004.

ORIGINAL CONSTRUCTION DRAWINGS ARE ON FILE WITH THE CITY OF LAS VEGAS. THE DOCUMENTS WERE SEALED ON 8/13/02 BY **KEN D. GILBRETH** UNDER LICENSE NO. 9177

WO. NO. 5346  
BY JPL  
DATE 08/13/02  
SCALE HORIZ. 1"=40'  
VERT. 1"=4'  
DRAWING SHEET 76 OF 84 SHEETS