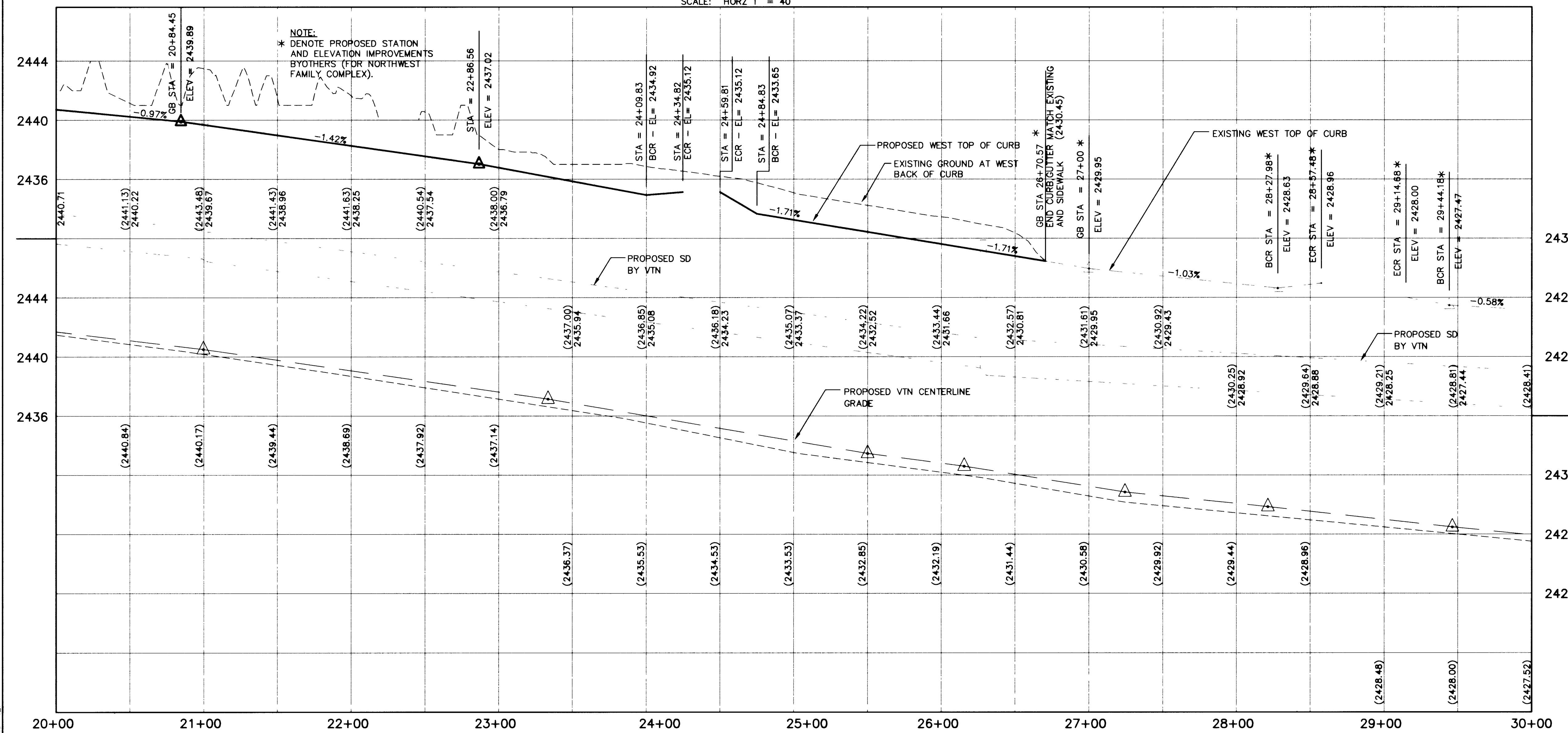


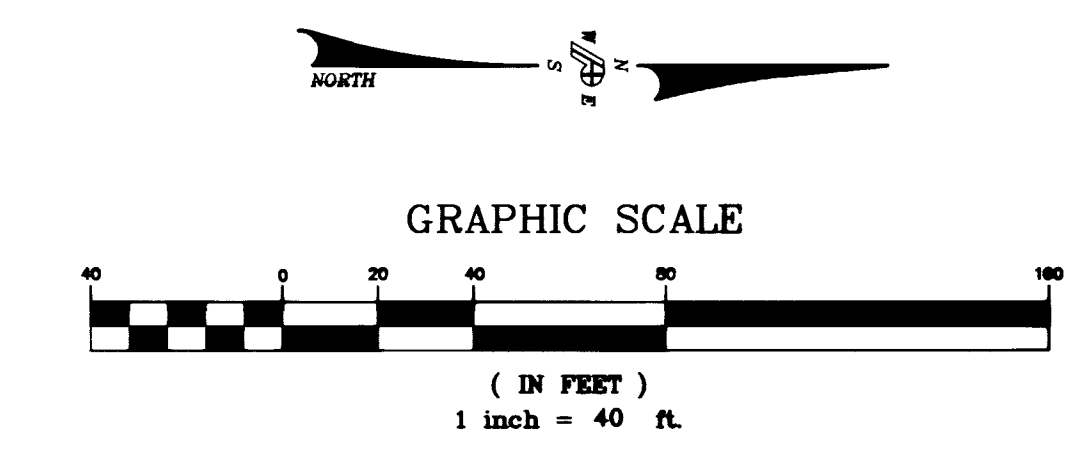
PLAN - DURANGO DRIVE

SCALE: HORZ 1" = 40'



PROFILE - DURANGO DRIVE

SCALE: HORZ 1" = 40'
VERT 1" = 4'



BACK CURB LINE TABLE

LINE	DIRECTION	DISTANCE
L12	N01°02'56"W	98.00'
L13	N01°02'56"W	98.00'
L40	S01°02'57"E	225.57'
L41	S01°02'56"E	114.76'
L42	S01°02'56"E	98.00'
L43	S01°02'56"E	409.60'
L44	N01°02'56"W	98.00'
L45	S01°02'56"E	409.71'

BACK CURB RADIUS LINE TABLE

CURVE	RADIUS	LENGTH	TANGENT	DELTA
C20	1.50'	4.71'	<infinite>	180°00'00"
C40	20.57'	6.50'	560.21'	181°19'47"
C42	4.71'	1.50'	-	180°00'00"
C43	50.18'	250.50'	25.18'	11°28'42"
C44	49.98'	249.50'	25.08'	11°28'42"
C47	49.98'	249.50'	25.08'	11°28'42"

- CONSTRUCTION KEYNOTES**
- CONSTRUCT 5" ASPHALTIC CONCRETE OVER 8" OF TYPE II AGGREGATE BASE IN ACCORDANCE WITH DETAIL NO. (A) PDG
 - RELOCATE EXISTING FH, AS SHOWN HEREON
 - CONSTRUCT COMMERCIAL DRIVEWAY ENTRANCE PER CLARK COUNTY AREA STD DWG NO. 225
 - CONSTRUCT HANDICAP RAMP PER CLARK COUNTY AREA STD DWG NO. 235 CASE 1.
 - CONSTRUCT SIDEWALK IN ACCORDANCE WITH USD NO. 234.
 - CONSTRUCT "L" TYPE CURB AND GUTTER IN ACCORDANCE WITH UDS NO. 216
 - ADJUST TO GRADE IN ACCORDANCE WITH USD NO. 408 (MANHOLES) NO. 517 (VALVE BOX) NO. 506 (METER BOX).
 - SAWCUT EXISTING PAVEMENT AND MATCH EXISTING, AS SHOWN HEREON
 - CONSTRUCT "A" TYPE CURB IN ACCORDANCE WITH UDS NO. 219
 - CONSTRUCT 8" CROSS GUTTER PER CLARK COUNTY AREA STD DWG NO. 228
 - CONSTRUCT 4" ASPHALTIC CONCRETE OVER 8" OF TYPE II AGGREGATE BASE IN ACCORDANCE WITH DETAIL NO. (B) PDG
 - CONSTRUCT TACK ON ISLAND PER CLARK COUNTY AREA STD DWG NO. 221.
 - CONSTRUCT PULL BOX NO. 5 PER CLARK COUNTY AREA STD DWG NO. 326

**RECORD DRAWINGS
NOT FOR CONSTRUCTION**

- TO ALTER THESE DOCUMENTS FOR ANOTHER PROJECT BY ANYONE OTHER THAN THE ORIGINAL ARCHITECT IS A VIOLATION OF NRS 823.
- THIS RECORD DRAWING HAS BEEN PREPARED IN PART, BASED UPON INFORMATION FURNISHED BY THE GENERAL CONTRACTOR. WHILE THIS INFORMATION IS BELIEVED TO BE RELIABLE, THE DESIGN PROFESSIONAL CANNOT ASSURE ITS ACCURACY, AND THIS IS NOT RESPONSIBLE FOR THE ACCURACY OF THIS RECORD DRAWING OR FOR ANY ERRORS OR OMISSIONS WHICH MAY HAVE BEEN INCORPORATED INTO IT AS A RESULT. THE DESIGN PROFESSIONAL CANNOT AND DOES NOT WARRANT THEIR ACCURACY.
- INFORMATION THAT MAY BE INCLUDED WOULD BE SIGNIFICANT CHANGES TO ROOM ARRANGEMENTS ON THE FLOOR PLANS AND ASSOCIATED DRAWINGS, MINOR DIMENSION OR CONSTRUCTION DETAIL CHANGES MAY NOT BE INCLUDED.

CONTRACTOR _____ DATE _____

BASIS OF BEARING - PDG N00°00'00"W
BEING THE NORTH LINE OF THE SOUTHEAST QUARTER (SE 1/4) OF SECTION 8, TOWNSHIP 20 SOUTH, RANGE 60 EAST, M.D.M. CLARK COUNTY, NEVADA. TAKEN AS NORTH 89°44'06"E EAST, SADDLE BACK EAST - UNIT 4 MAP, BOOK 62, PAGE 92, RECORDED JULY 14, 1994, CLARK COUNTY, OFFICIAL RECORDS.

PROJECT BENCH MARK - PDG
CITY OF LAS VEGAS BENCH MARK 0LV00-17NE6, RIVET AND PLATE ON TOP OF CURB, RAMPART BLVD. AND LAZERETTE DRIVE, WEST CURB LINE PDG ELEVATION TAKEN AS 2468.64 FEET (752.4415 M) (VTN ELEVATION: 2468.81 FEET)

PROJECT BENCH MARK - VTN
PROJECT DATUM: NAVD88
CITY OF LAS VEGAS BENCH MARK 1LV90-33SE5
NAVD88 ELEVATION: 717.2083 METERS (2353.04 FEET)
RIVET AND PLATE IN A CONCRETE ELECTRICAL VAULT AT THE NORTHWEST CORNER OF BUFFALO DRIVE AND LONE MOUNTAIN ROAD

BASIS OF BEARING - VTN (N00°00'00"W)
THE BASIS OF BEARINGS FOR THIS PROJECT IS GRID NORTH AS DEFINED BY THE NEVADA COORDINATE SYSTEM OF 1983 (NCS83), EAST ZONE, (2701), DETERMINED BY CLARK COUNTY GIS CONTROL POINTS 808, 819, AND 877, AS SHOWN ON A RECORD OF SURVEY ON FILE IN THE CLARK COUNTY, NEVADA, RECORDER'S OFFICE, IN BOOK 88 OF SURVEYS, AT PAGE 53.

POGEMEYER DESIGN GROUP
ENGINEERS PLANNERS SURVEYORS
LANDSCAPE ARCHITECTS
2801 NORTH TENAYA WAY
LAS VEGAS, NEVADA 89128 (702) 255-8100

GREELEY AND HANSEN
ENGINEERS
4625 SOUTH POLARIS AVENUE, SUITE 210
LAS VEGAS, NEVADA 89103 (702) 736-7062

NO.	DATE	APPD	REVISION

PROFILE - DURANGO DRIVE
SCALE: HORZ 1" = 40'
VERT 1" = 4'

CITY OF LAS VEGAS, NEVADA
DEPARTMENT OF PUBLIC WORKS
NORTHWEST WATER RESOURCE CENTER
100% DESIGN

ROADWAY IMPROVEMENTS
DURANGO DRIVE - STA 20+00 TO 30+00
PLAN AND PROFILE

PROJ. NO. 7190
DWG. PDG 7
SHEET 7 OF 13
DATE 07.16.98 REV 0