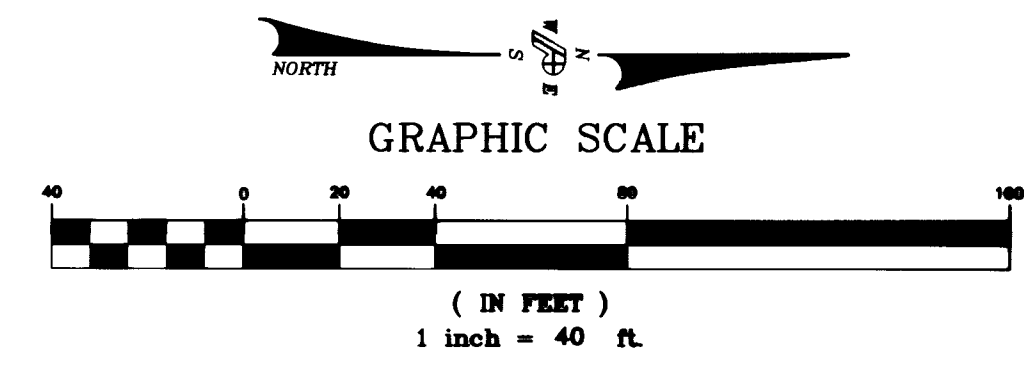


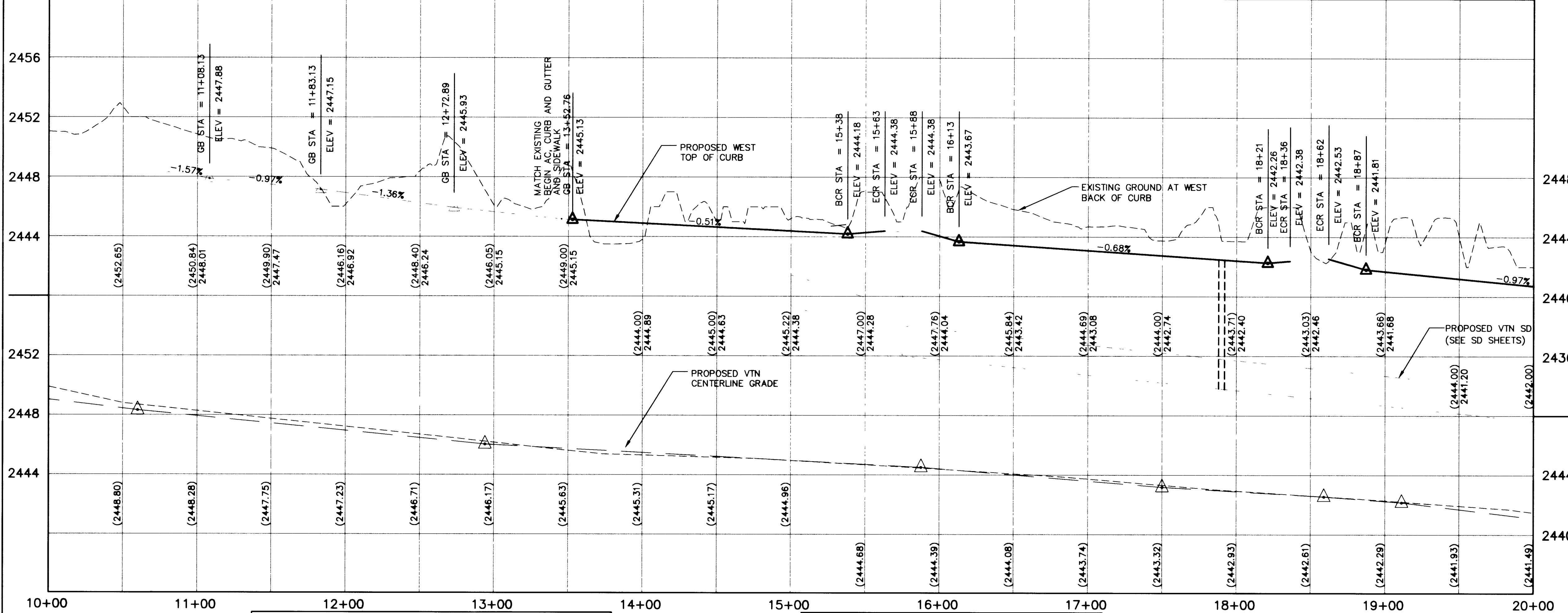
**PLAN - DURANGO DRIVE**

SCALE: HORZ 1" = 40'



- LEGEND**
- DENOTES PDG FINISH GRADE ELEVATION
  - DENOTES VTN FINISH GRADE ELEVATION

- CONSTRUCTION KEYNOTES**
- CONSTRUCT 5" ASPHALTIC CONCRETE OVER 8" OF TYPE II AGGREGATE BASE IN ACCORDANCE WITH DETAIL NO. (A) PDG3
  - RELOCATE EXISTING F.H. AS SHOWN HEREON.
  - CONSTRUCT COMMERCIAL DRIVEWAY ENTRANCE PER CLARK COUNTY AREA STD DWG NO. 225
  - CONSTRUCT HANDICAP RAMP PER CLARK COUNTY AREA STD DWG NO. 235 CASE 1.
  - CONSTRUCT SIDEWALK IN ACCORDANCE WITH USD NO. 234.
  - CONSTRUCT "L" TYPE CURB AND GUTTER IN ACCORDANCE WITH USD NO. 216.
  - ADJUST TO GRADE IN ACCORDANCE WITH USD NO. 408 (MANHOLES) NO. 517 (VALVE BOX) NO. 506 (METER BOX).
  - SAWCUT EXISTING PAVEMENT AND MATCH EXISTING, AS SHOWN HEREON.
  - CONSTRUCT "A" TYPE CURB IN ACCORDANCE WITH USD NO. 219.
  - CONSTRUCT "B" CROSS GUTTER PER CLARK COUNTY AREA STD AREA DWG NO. 228.
  - CONSTRUCT 4" ASPHALTIC CONCRETE OVER 8" OF TYPE II AGGREGATE BASE IN ACCORDANCE WITH DETAIL NO. (B) PDG3
  - CONSTRUCT TACK ON ISLAND PER CLARK COUNTY AREA STD DWG NO. 221.
  - CONSTRUCT PULL BOX NO. 5 PER CLARK COUNTY AREA STD DWG NO. 326
  - CONSTRUCT DOUBLE SIDEWALK DRAIN PER DETAIL NO. (2) PDG3



**PROFILE - DURANGO DRIVE**

SCALE: HORZ 1" = 40'  
VERT 1" = 4'

**BACK CURB LINE TABLE**

LINE	DIRECTION	DISTANCE	LINE	DIRECTION	DISTANCE
L1	N01°02'56"W	87.87	L11	S01°02'56"E	320.42
L2	N01°02'56"W	87.54	L12	N01°02'56"W	98.00
L3	N01°02'56"W	97.79	L13	N01°02'56"W	98.00
L4	N01°02'56"W	97.80	L14	S01°02'56"E	924.10
L5	S01°02'56"E	298.00	L15	S01°02'56"E	726.64
L6	N01°02'56"W	526.19	L16	N01°04'27"W	185.24
L7	N01°06'06"W	17.96	L17	N01°04'27"W	208.10
L8	N01°06'06"W	17.96	L18	N01°04'27"W	729.77
L9	N01°04'36"W	17.34	L40	S01°02'57"E	225.57
L10	N01°04'36"W	17.34	L46	S01°02'56"E	84.44

**BACK CURB CURVE TABLE**

CURVE	RADIUS	LENGTH	TANGENT	DELTA
C1	249.50'	55.31'	27.77'	12°42'03"
C2	250.50'	52.55'	26.37'	12°01'13"
C3	1.50'	4.11'	7.34'	156°54'36"
C4	6.50'	4.68'	2.45'	411°3'43"
C5	50.50'	16.03'	8.08'	181°1'29"
C6	1.50'	4.71'	<infinite>	180°00'00"
C7	249.50'	52.45'	26.32'	12°02'44"
C8	246.50'	49.60'	24.88'	11°31'42"
C9	1.50'	4.71'	<infinite>	180°00'00"
C10	249.50'	49.69'	24.93'	11°24'38"
C11	246.50'	49.09'	24.63'	11°24'38"
C12	250.50'	50.00'	25.08'	11°26'09"
C13	253.50'	50.60'	25.38'	11°26'09"
C14	1.50'	4.71'	<infinite>	180°00'00"
C15	1.50'	4.13'	7.60'	157°40'19"
C16	6.50'	4.63'	2.42'	40°49'13"
C17	50.50'	16.35'	8.24'	18°32'42"
C18	249.50'	50.19'	25.18'	11°31'29"
C19	250.50'	50.18'	25.18'	11°28'42"
C20	1.50'	4.71'	<infinite>	180°00'00"
C21	1.50'	4.71'	<infinite>	180°00'00"
C22	246.50'	49.58'	24.87'	11°31'29"
C23	249.50'	49.98'	25.08'	11°28'42"
C24	250.50'	55.44'	27.83'	12°40'51"
C25	249.50'	50.11'	25.14'	11°30'30"
C26	1.50'	4.71'	3975.67'	180°02'36"
C27	6.50'	20.62'	420.12'	181°46'23"
C28	25.00'	39.27'	25.00'	90°00'00"
C29	25.00'	39.27'	25.00'	90°00'00"
C30	15.00'	23.56'	15.00'	90°00'00"
C31	25.00'	39.27'	25.00'	90°00'00"
C41	1.50'	4.71'	<infinite>	180°00'00"

**PROJECT BENCH MARK - PDG**  
CITY OF LAS VEGAS BENCH MARK 0LV00-17NEE6, RIVET AND PLATE ON TOP OF CURB, RAMPART BLVD. AND LAZERETTE DRIVE, WEST CURB LINE PDG ELEVATION TAKEN AS 2468.64 FEET (752.4415 M)  
(VTN ELEVATION: 2468.81 FEET)

**BASIS OF BEARING - PDG N00°00'00"W**  
BEING THE NORTH LINE OF THE SOUTHEAST QUARTER (SE 1/4) OF SECTION 8, TOWNSHIP 20 SOUTH, RANGE 60 EAST, M.D.M. CLARK COUNTY, NEVADA. TAKEN AS NORTH 89°44'06"E EAST, SADDLE BACK EAST UNIT 4 MAP, BOOK 62, PAGE 92, RECORDED JULY 14, 1994, CLARK COUNTY, OFFICIAL RECORDS.

**RECORD DRAWINGS NOT FOR CONSTRUCTION**

- TO ALTER THESE DOCUMENTS FOR ANOTHER PROJECT BY ANYONE OTHER THAN THE ORIGINAL ARCHITECT IS A VIOLATION OF NRS 823.
- THIS RECORD DRAWING HAS BEEN PREPARED IN PART, BASED UPON INFORMATION FURNISHED BY THE GENERAL CONTRACTOR, WHILE THIS INFORMATION IS BELIEVED TO BE RELIABLE, THE DESIGN PROFESSIONAL CANNOT ASSURE ITS ACCURACY, AND THIS IS NOT RESPONSIBLE FOR THE ACCURACY OF THIS RECORD DRAWING OR FOR ANY ERRORS OR OMISSIONS WHICH MAY HAVE BEEN INCORPORATED INTO IT AS A RESULT. THE DESIGN PROFESSIONAL CANNOT AND DOES NOT WARRANT THEIR ACCURACY.
- INFORMATION THAT MAY BE INCLUDED WOULD BE SIGNIFICANT CHANGES TO ROOM ARRANGEMENTS ON THE FLOOR PLANS AND ASSOCIATED DRAWINGS, MINOR DIMENSION OR CONSTRUCTION DETAIL CHANGES MAY NOT BE INCLUDED.

**BASIS OF BEARING - VTN (N00°00'00"W)**  
THE BASIS OF BEARINGS FOR THIS PROJECT IS GRID NORTH AS DEFINED BY THE NEVADA COORDINATE SYSTEM OF 1983 (NCS83), EAST ZONE, (2701), DETERMINED BY CLARK COUNTY GIS CONTROL POINTS 808, 819, AND 877, AS SHOWN ON A RECORD OF SURVEY ON FILE IN THE CLARK COUNTY, NEVADA, RECORDER'S OFFICE, IN BOOK 88 OF SURVEYS, AT PAGE 53.

**PROJECT BENCH MARK - VTN**  
PROJECT DATUM: NAVD88  
CITY OF LAS VEGAS BENCH MARK 1LV90-33SES  
NAVD88 ELEVATION: 717.2083 METERS (2353.04 FEET)  
RIVET AND PLATE IN A CONCRETE ELECTRICAL VAULT AT THE NORTHWEST CORNER OF BUFFALO DRIVE AND LONE MOUNTAIN ROAD

**POGGEMEYER DESIGN GROUP**  
2601 NORTH TENAYA WAY  
LAS VEGAS, NEVADA 89128 (702) 255-8100

DESIGNED	SW	APPROVED	
DRAWN	FT		
CHECKED	MBH		

NO.	DATE	APPD	REVISION

CONTRACTOR \_\_\_\_\_ DATE \_\_\_\_\_

CITY OF LAS VEGAS, NEVADA  
DEPARTMENT OF PUBLIC WORKS  
NORTHWEST WATER RESOURCE CENTER  
100% DESIGN

ROADWAY IMPROVEMENTS  
DURANGO DRIVE - STA 13+33.97 TO 20+00  
PLAN AND PROFILE

PROJ. NO.	7190
DWG	PDG 6
SHEET	6 OF 13
DATE	07.21.98
REV	0