

VIEW "PLT" (PS)
I:\CAD\PLT\WORK\5249\5249-1.DWG

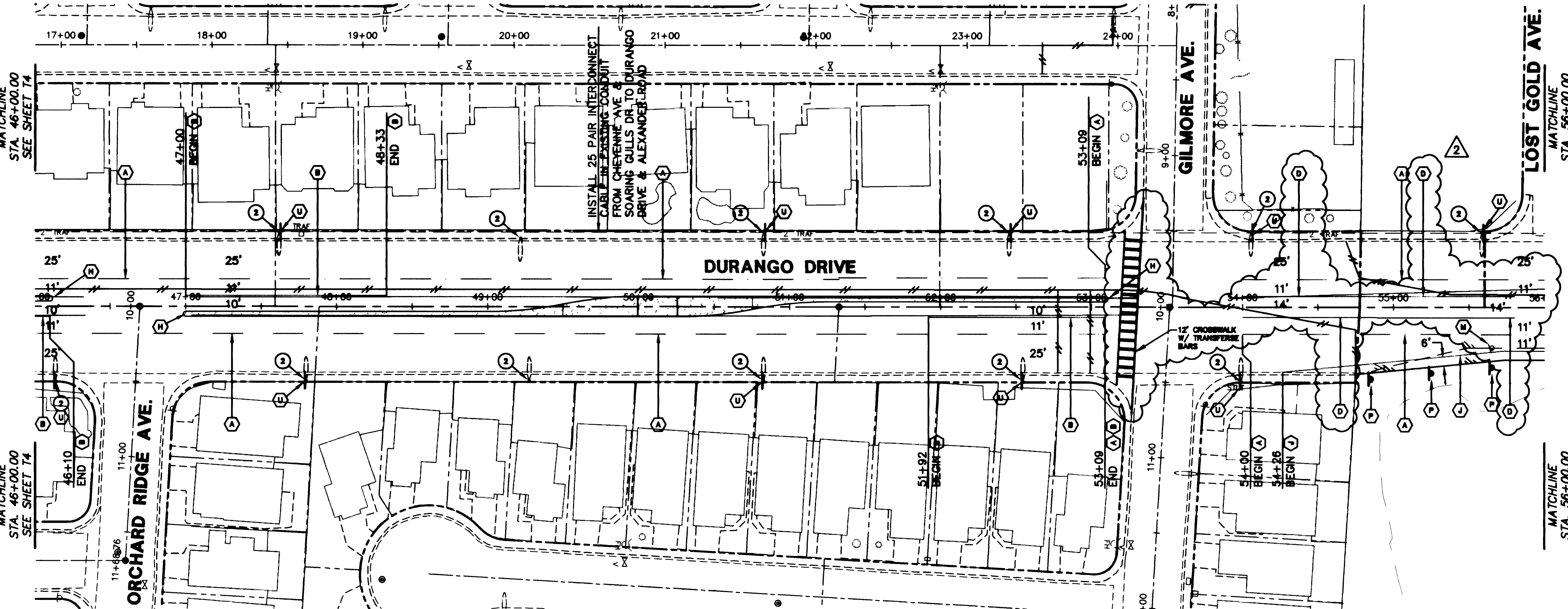
MATCHLINE
STA. 56+00.00
SEE ABOVE RIGHT

MATCHLINE
STA. 56+00.00
SEE ABOVE RIGHT

MATCHLINE
STA. 46+00.00
SEE SHEET T4

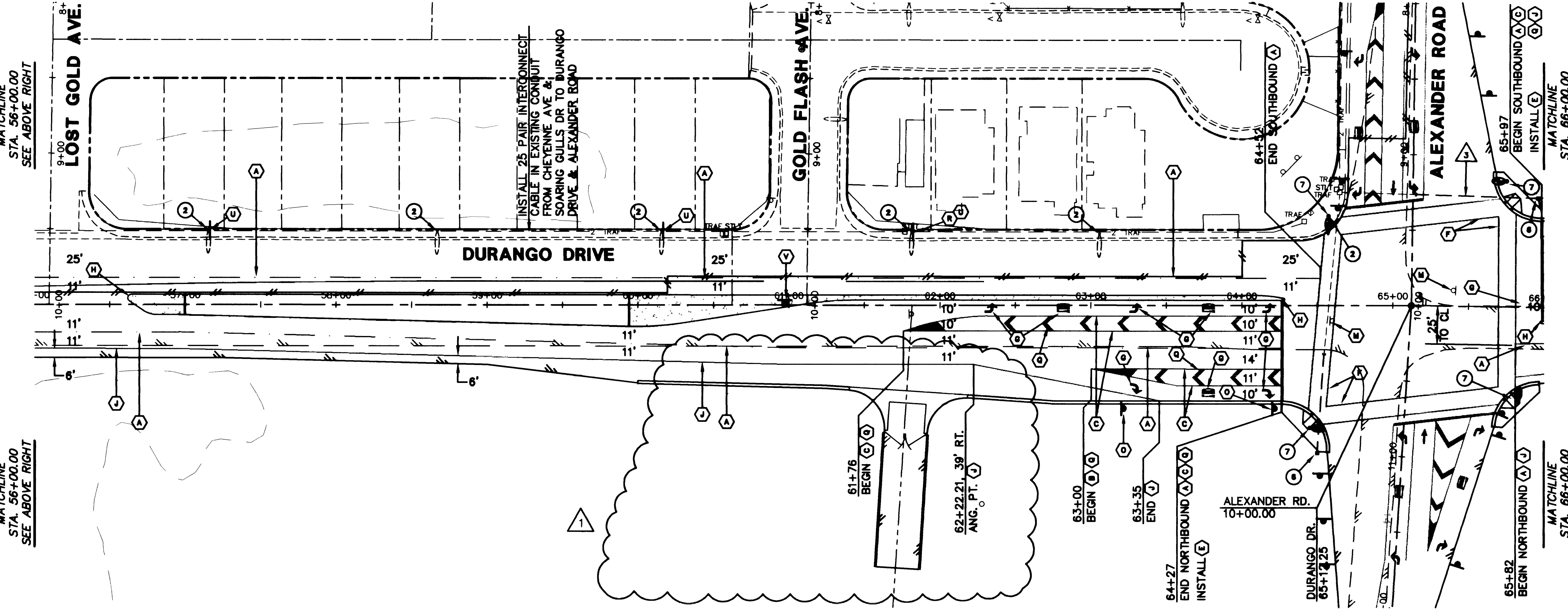
MATCHLINE
STA. 46+00.00
SEE SHEET T4

MATCHLINE
STA. 46+00.00
SEE SHEET T4



SEE SHEET T13
FOR ALEXANDER ROAD
TRAFFIC SIGNAL IMPROVEMENTS

SEE SHEET T9 FOR
ALEXANDER ROAD

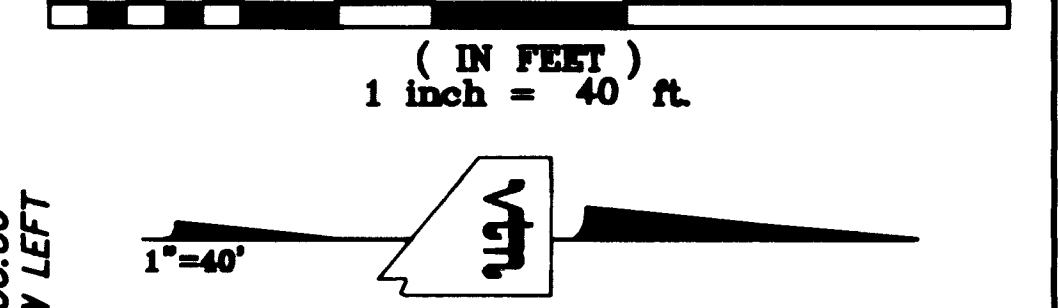


ALL LANE DIMENSIONS ARE
FROM FACE OF MEDIAN CURB TO
LIP OF GUTTER OR EDGE OF A.C.

MATCHLINE
STA. 66+00.00
SEE SHEET T6

MATCHLINE
STA. 56+00.00
SEE BELOW LEFT

MATCHLINE
STA. 56+00.00
SEE BELOW LEFT



- SIGNAGE AND DELINEATION LEGEND**
- (A) INSTALL TYPE 4 LANE LINE DELINEATION USING TYPE "A" & "F" MARKERS PER USDOCA STD. DWG. NO. 244A.
 - (B) INSTALL WHITE TURN LANE STORAGE LINE DELINEATION USING TYPE "A" & "F" MARKERS PER USDOCA STD. DWG. NO. 248.
 - (C) INSTALL YELLOW TYPE 1 CENTERLINE DELINEATION PER USDOCA STD. DWG. NO. 244.
 - (D) INSTALL YELLOW TYPE 2 CENTERLINE DELINEATION PER USDOCA STD. DWG. NO. 244.
 - (E) INSTALL 24" WIDE STOP BAR USING WHITE COLD POLYMER FILM.
 - (F) INSTALL 10' WIDE CROSSWALK USING WHITE COLD POLYMER FILM. SEE TYPICAL DETAIL ON SHEET T1.
 - (G) INSTALL ARROWS AND "ONLY" USING WHITE COLD POLYMER FILM.
 - (H) INSTALL YELLOW REFLECTIVE MEDIUM NOSE MARKERS PER USDOCA STD. DWG. NO. 248.
 - (I) INSTALL WHITE DROP LANE DELINEATION PER USDOCA STD. DWG. NO. 246A.
 - (J) INSTALL 4" TYPE II FILM MARKING.
 - (K) EXISTING SIGN & POST TO REMAIN.
 - (L) EXISTING SIGN ON STREET LIGHT POLE TO REMAIN.
 - (M) EXISTING SIGN & POST TO BE REMOVED.
 - (N) EXISTING SIGN ON STREET LIGHT POLE TO BE REMOVED.
 - (O) INSTALL R3-7R "RIGHT LANE MUST TURN RIGHT" (30"x30").
 - (P) INSTALL OM-3R "OBJECT MARKER" SYMBOL (12"x36").
 - (Q) INSTALL 24" WIDE CHEVRONS PER USDOCA STD. DWG. 245.
 - (R) INSTALL R2-1 "SPEED LIMIT 45" (24"x30").
 - (S) INSTALL W3-1A "STOP AHEAD" SYMBOL (36"x36").
 - (T) INSTALL R1-1 "STOP SIGN" SYMBOL (30"x30").
 - (U) INSTALL R8-3A "NO PARKING" (24"x24") SYMBOL & R7-1AP "ANY TIME W/ DOUBLE HEAD ARROW" SYMBOL (24"x24").
 - (V) INSTALL R6-1R "ONE WAY" SYMBOL (36"x12").
 - (W) INSTALL R3-2 "NO LEFT TURN" SYMBOL (24" x 24") & R3-4 "NO U-TURN" SYMBOL (24" x 24").
- STREET LIGHTING LEGEND**
- (1) INSTALL STREET LIGHT POLE AND FOUNDATION WITH 250w LUMINAIRE PER USDOCA STD. DWG. NO. 314.
 - (2) EXISTING STREET LIGHT POLE, FOUNDATION & LUMINAIRE TO REMAIN.
 - (3) REMOVE EXISTING STREET LIGHT POLE AND LUMINAIRE AND RETURN TO THE CITY OF LAS VEGAS 3100 E. BONANZA.
 - (4) INSTALL NO. 3-1/2 STREET LIGHT PULL BOX PER USDOCA STD. DWG. NO. 326.
 - (5) INSTALL NO. 5 STREET LIGHT PULL BOX PER USDOCA STD. DWG. NO. 326.
 - (6) INSTALL NO. 5 INTERCONNECT CONDUIT PULL BOX PER STD. DWG. 404.120 AT 300' MAXIMUM SPACING.
 - (7) SEE TRAFFIC SIGNAL UNDERGROUND PLANS FOR INSTALLATION OF INTERSECTION LUMINAIRES.
- WIRING AND CONDUIT LEGEND**
- (1) INSTALL 1-1/4" CONDUIT WITH (2) #4 & (1) #6
 - (2) INSTALL 1-1/4" CONDUIT ONLY
 - (3) INSTALL 3" INTERCONNECT CONDUIT WITH PULL STRING.
- NOTES**
- ALL WORK TO BE DONE IN ACCORDANCE TO THE UNIFORM STANDARD DRAWINGS AND SPECIFICATIONS FOR PUBLIC WORKS' CONSTRUCTION OFF-SITE IMPROVEMENTS CLARK COUNTY AREA NEVADA AS ADOPTED BY THE CITY OF LAS VEGAS.
 - ALL STREET LIGHTING WIRE AND CONDUIT IS 2#4, 1#6, 1 1/4" C UNLESS NOTED OTHERWISE. ALL STREET LIGHTING WIRE SHALL BE COPPER WITH THW INSULATION.
 - ALL PULLBOXES ARE NO. 3-1/2 UNLESS NOTED OTHERWISE.
 - FIELD VERIFY EXISTING UNDERGROUND CONDUIT AND PULLBOXES. UTILIZE EXISTING CONDUIT WHERE POSSIBLE AND INSTALL NEW CONDUIT AS REQUIRED PER PLANS.

DEPARTMENT OF PUBLIC WORKS
CITY OF LAS VEGAS

CONSULTING ENGINEERS • PLANNERS • LAND SURVEYORS
2727 SOUTH RAINBOW BOULEVARD
LAS VEGAS, NEVADA 89102-5148 PHONE (702) 873-7550 FAX (702) 362-2597

vtn nevada

NO.	DATE	BY	REVISION
1	11/11/08	LMM	ADDED DRIVEWAY FOR MAINTENANCE ROAD, PAINTBLOT AND FENCE, EXTENDED CURB AND BITTER.
2	03/18/09	LMM	CHANGED PER AS-BUILTS

STRIPING & STREET LIGHTING PLAN
STA. 46+00.00 TO STA. 66+00.00
DURANGO ROAD

PROJECT
DURANGO DRIVE IMPROVEMENTS
CHEYENNE AVENUE TO LONE MOUNTAIN ROAD

NO. NO. 5249
RCH
BY TMM, WBM
DATE 07/17/08
SCALE HORIZ. 1"=40'
VERT. NONE

DRAWING SHEET
T5 80 OF 106 SHEETS